



## Projects of Rajasthan State for

# Sanctioning of Central Sanctioning & Monitoring Committee Under Housing for All

**Dated: 18<sup>th</sup> November, 2015**

# Funding under Housing For All policy of Government of India-

➤ As per HFA options available to beneficiaries-

- For EWS-

- Under Credit Linked Subsidy Scheme interest subsidy upto 6.5 % up to loan amount of Rs 6.00 lakhs through financing agencies.
- Under Affordable Housing in Partnership Rs 1.5 Lakhs per unit through State Government.

- For LIG – Under Credit Linked Subsidy Scheme interest subsidy upto 6.5 % up to loan amount of Rs 6.00 lakhs through financing agencies.

# Project-1: Affordable Housing Project at Jodhpur

Developer :- Nila Infrastructure Ltd.

Aanganva (Jodhpur) Affordable housing

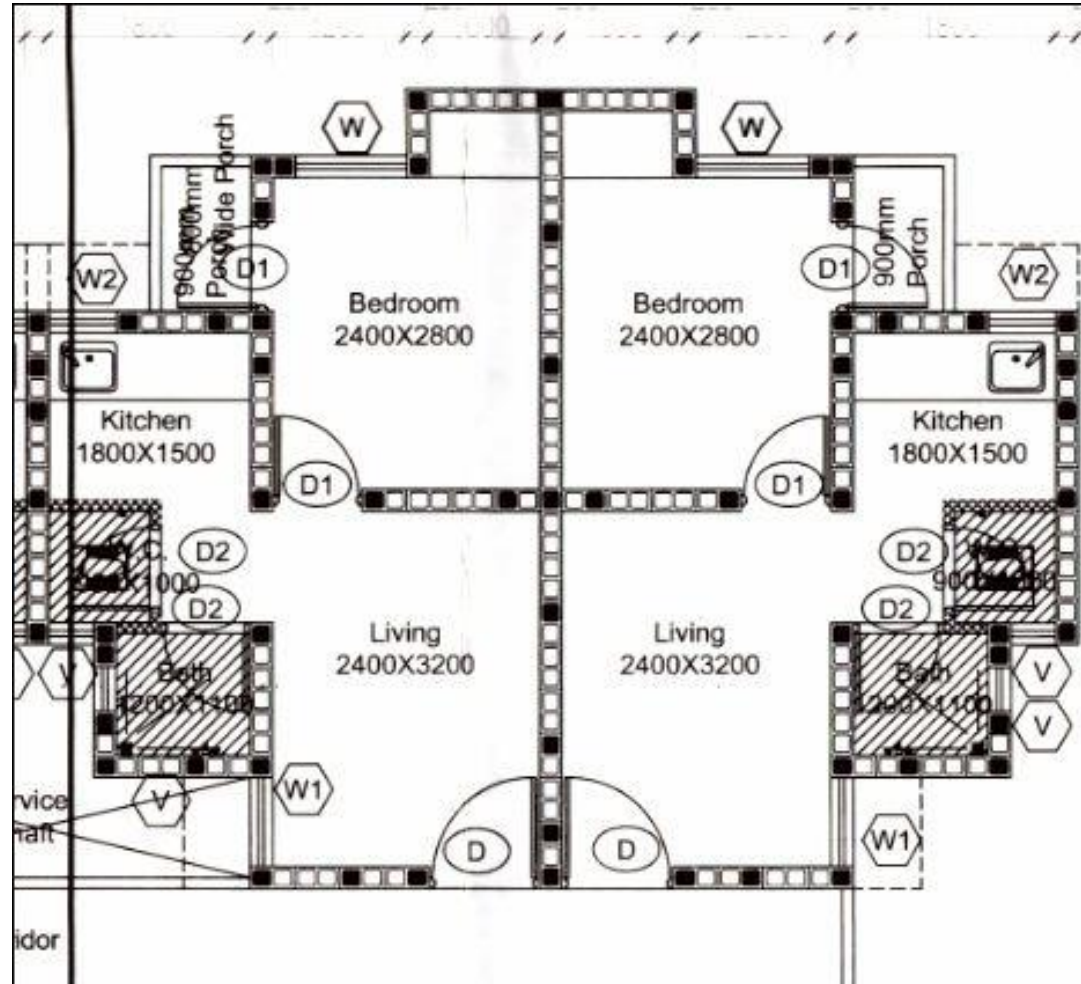


# Project-1: Affordable Housing Project at Jodhpur

## Developer - Nila Infrastructure Ltd.

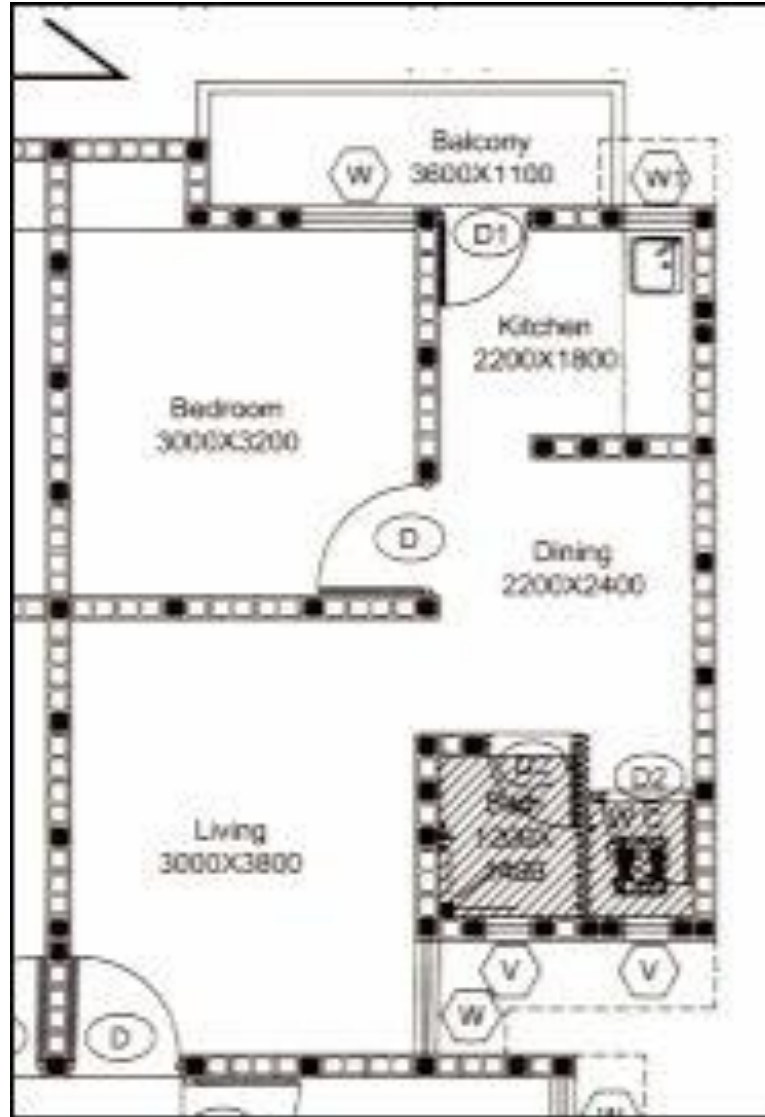
- Location - Aanganva, Nagaur Road approx 15 Km from Railway Station Jodhpur Jn.
- Total Land Area - 4.04 Hac. (Govt. Land)
- Topography - Hilly terrain
- Land Area for EWS/LIG/MIGA component - 3.03 Hac (75%)
- No of Units -EWS - 544 units (50.74 % > 35% as per HFA)
  - LIG - 368 units
  - MIG A- 160 units
  - Total - 1072 units
- Unit Builtup area of EWS - 30.25 sqm. i.e 325 qs.ft.
- Sale price of EWS - 325@Rs 1000/- per sqft (Rs 3.25 Lakhs)
- Subsidy by Implementing Agency- 325 sqft. @Rs 550/- per sqft i.e Rs.1.79 Lakhs
- Per unit cost-Rs.1.75 Lakhs after AHP subsidy
- Unit area of LIG - 46.40 sqm. @Rs 1000/- per sqft (Rs 5.00 Lakhs)
- Status - Project approved by Local Authority and applications from beneficiaries invited.

# Affordable Housing Project at Jodhpur



## EWS UNIT DESIGN

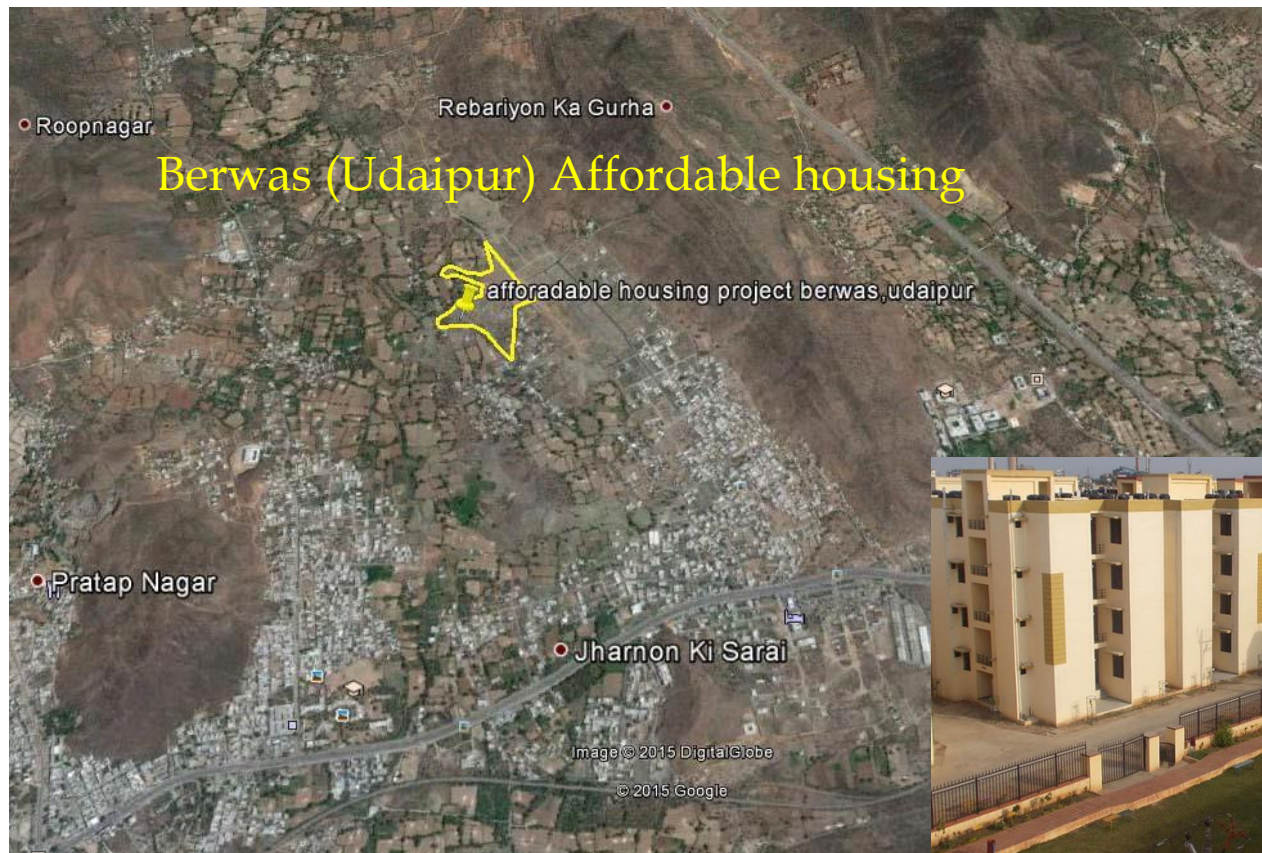
# Affordable Housing Project at Jodhpur



LIG UNIT DESIGN

# Project-2: Housing Project at Berwas (Udaipur)

Developer - Prime Civil Infrastructure Pvt. Ltd.  
& KK Gupta Joint Venture



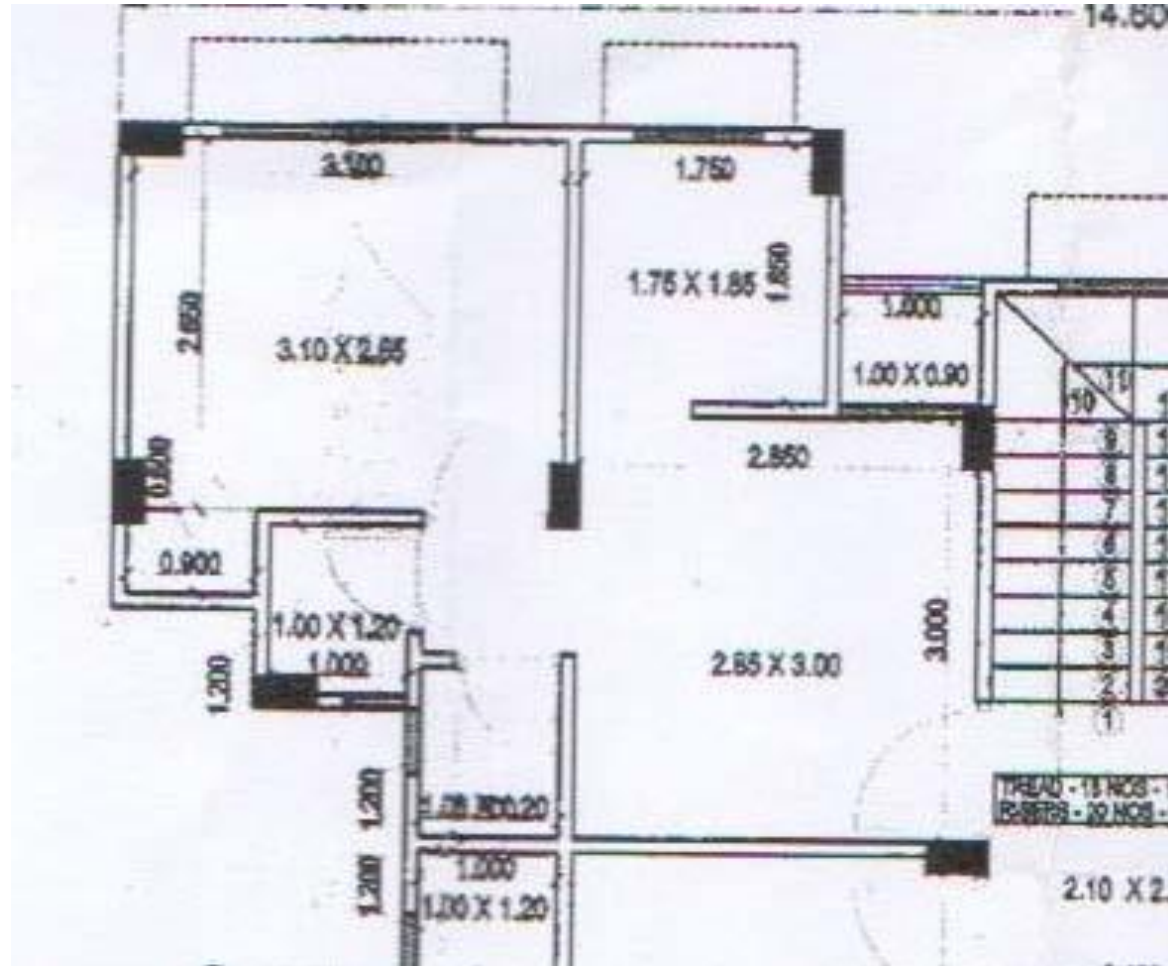
# Affordable Housing Project at Berwas (Udaipur)

## Developer – Prime Civil Infrastructure Pvt. Ltd. Mumbai

- Location – Berwas road, Udaipur
- Total Land Area – 8.04 Hac. (Govt. Land)
- Topography – Plain
- Land Area for EWS/LIG/MIG-A component - 6.03 Hac (75%)
- No of Units –EWS – 848 units (50% > 35% as per HFA)
  - LIG – 584 units
  - MIG A – 264 units
  - Total – 1696 units
- Unit Builtup area of EWS – 30.25 sqm. i.e 325 sq.ft.
- Sale price of EWS – 325@Rs 1000/- per sqft (Rs 3.25 Lakhs)
- Subsidy by Implementing Agency– 325 sqft. @Rs 440/- per sqft i.e Rs.1.43 Lakhs
- Per unit cost-Rs.1.75 Lakhs after AHP subsidy
- Unit area of LIG – 46.40 Sqm. @Rs 1000/- per sqft (Rs 5.00 Lakhs)
- Status - Project approved by Local Authority and applications from beneficiaries invited.

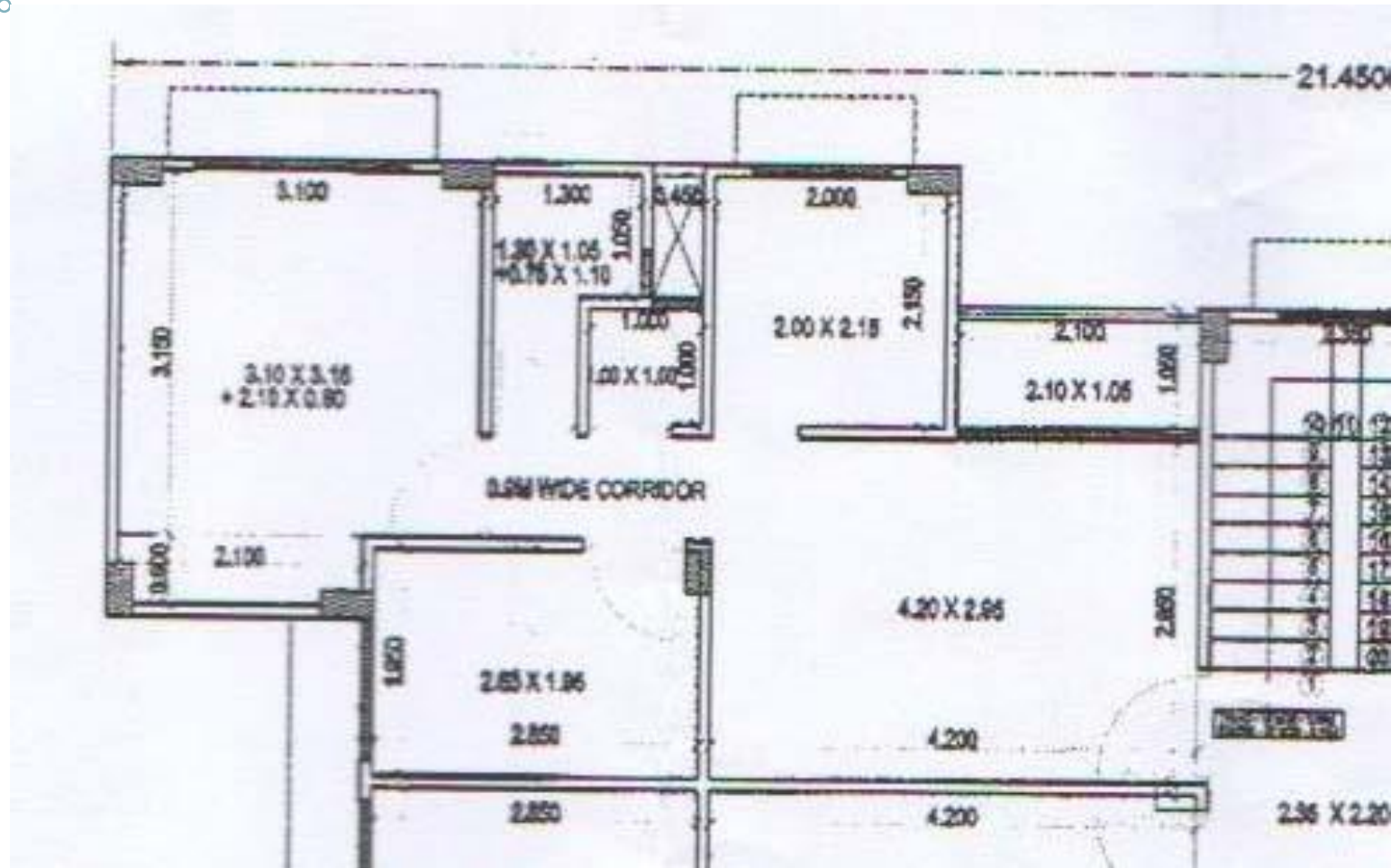


# Housing Project at Berwas (Udaipur)



**EWS UNIT DESIGN**

# Housing Project at Berwas (Udaipur)



LIG UNIT DESIGN

# Project-3: Affordable Housing Project at Balotra Phase-I

Developer - Prime Civil Infrastructure Pvt. Ltd. Mumbai

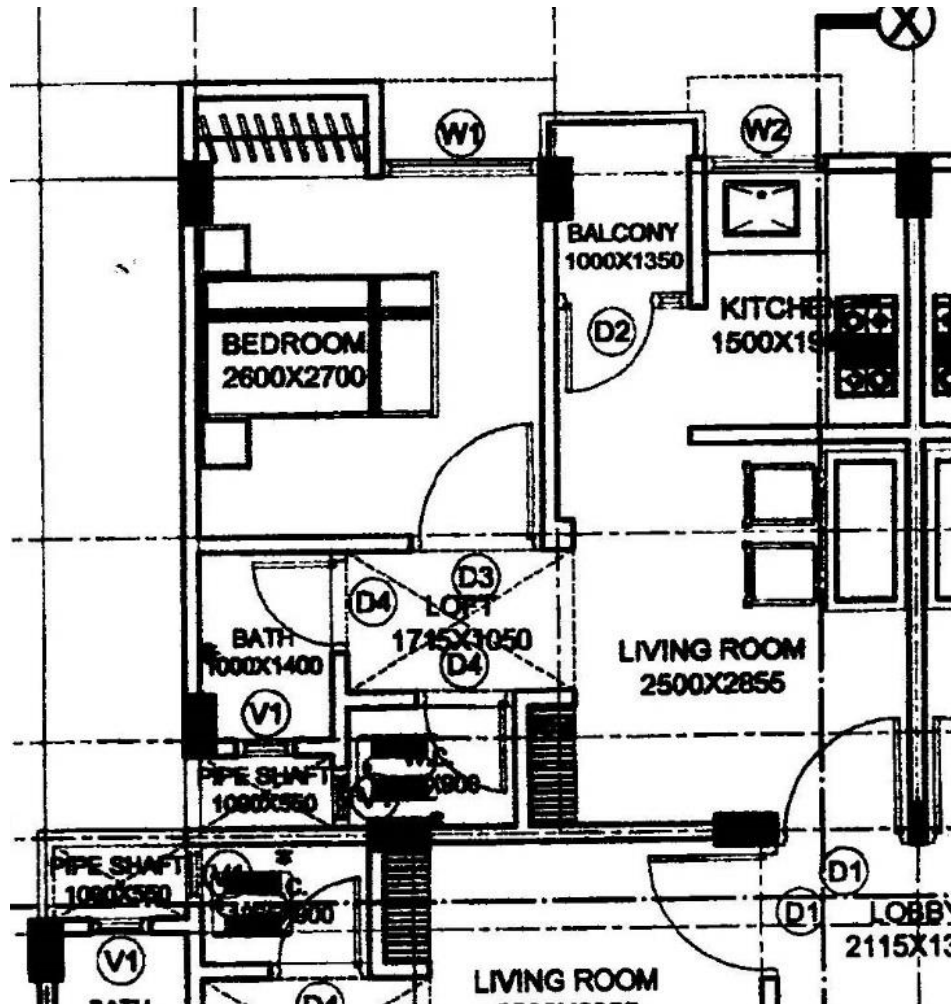


# Affordable Housing Project at Balotra Phase-I

## **Developer – Prime Civil Infrastructure Pvt. Ltd. Mumbai**

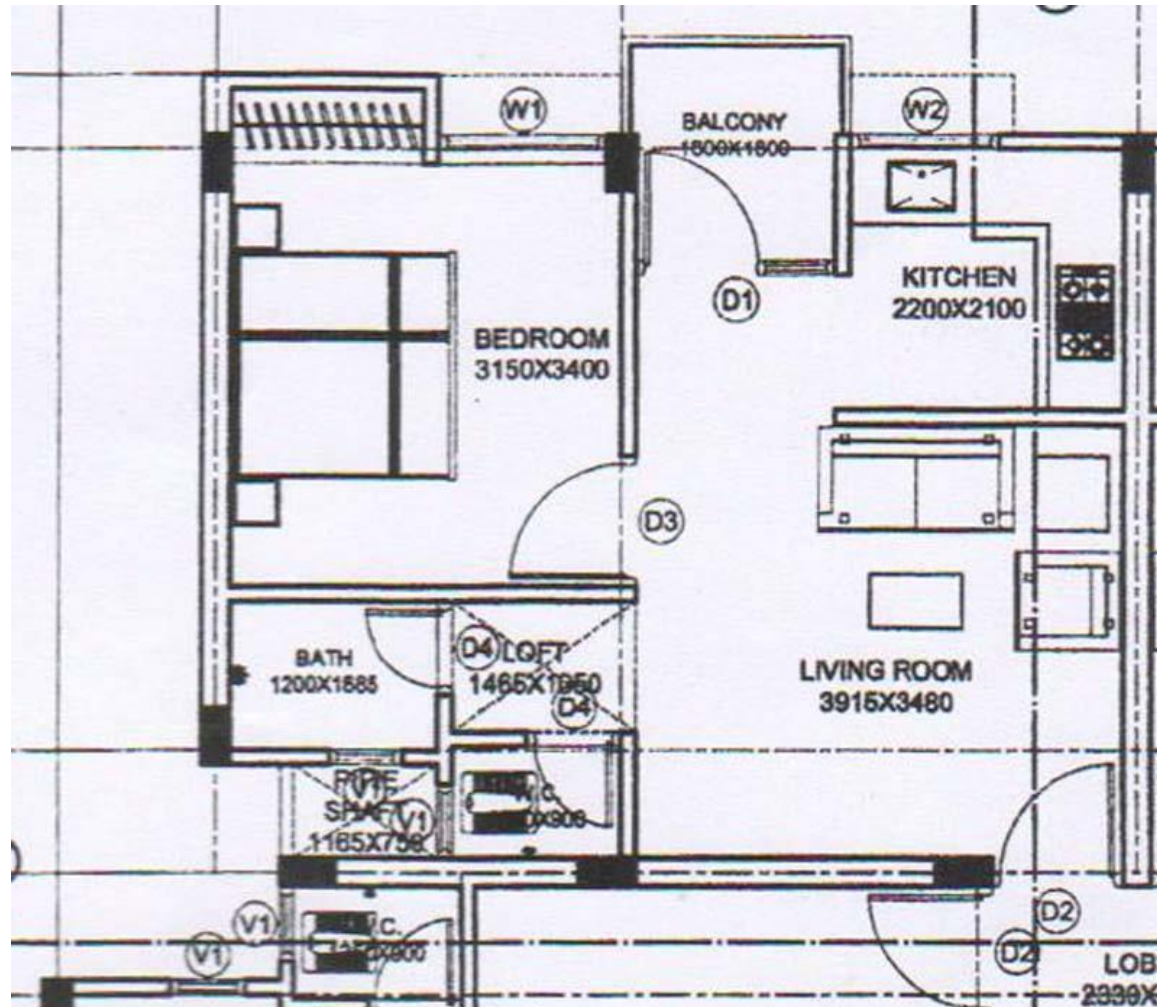
- Location – Khed Road, Opposite Housing Board Colony.
- Total Land Area – 4.78 Hac. (Govt. Land)
- Topography – Plain
- Land Area for EWS/LIG/MIG-A component - 3.83 Hac (75%)
- No of Units –
  - EWS – 608 units (50% > 35% as per HFA)
  - LIG – 416 units
  - MIG A – 192 units
  - Total – 1216 units
- Unit Builtup area of EWS – 30.25 sqm. i.e 325 qs.ft.
- Sale price of EWS – 325@Rs 1000/- per sqft (Rs 3.25 Lakhs)
- Subsidy by Implementing Agency– 325 sqft. @Rs 500/- per sqft i.e Rs.1.62 Lakhs
- Per unit cost-Rs.1.75 Lakhs after AHP subsidy
- Unit area of LIG – 46.40 Sqm. @Rs 1000/- per sqft (Rs 5.00 Lakhs)
- Status - Project approved by Local Authority and applications from beneficiaries invited.

# Affordable Housing Project at Balotra Phase-I



**EWS UNIT DESIGN**

# Affordable Housing Project at Balotra Phase-I



**LIG UNIT DESIGN**

# Project-4: -Affordable Housing Project at Balotra Phase-II

Developer – R.D.B. Reality Pvt. Ltd. Kolkata



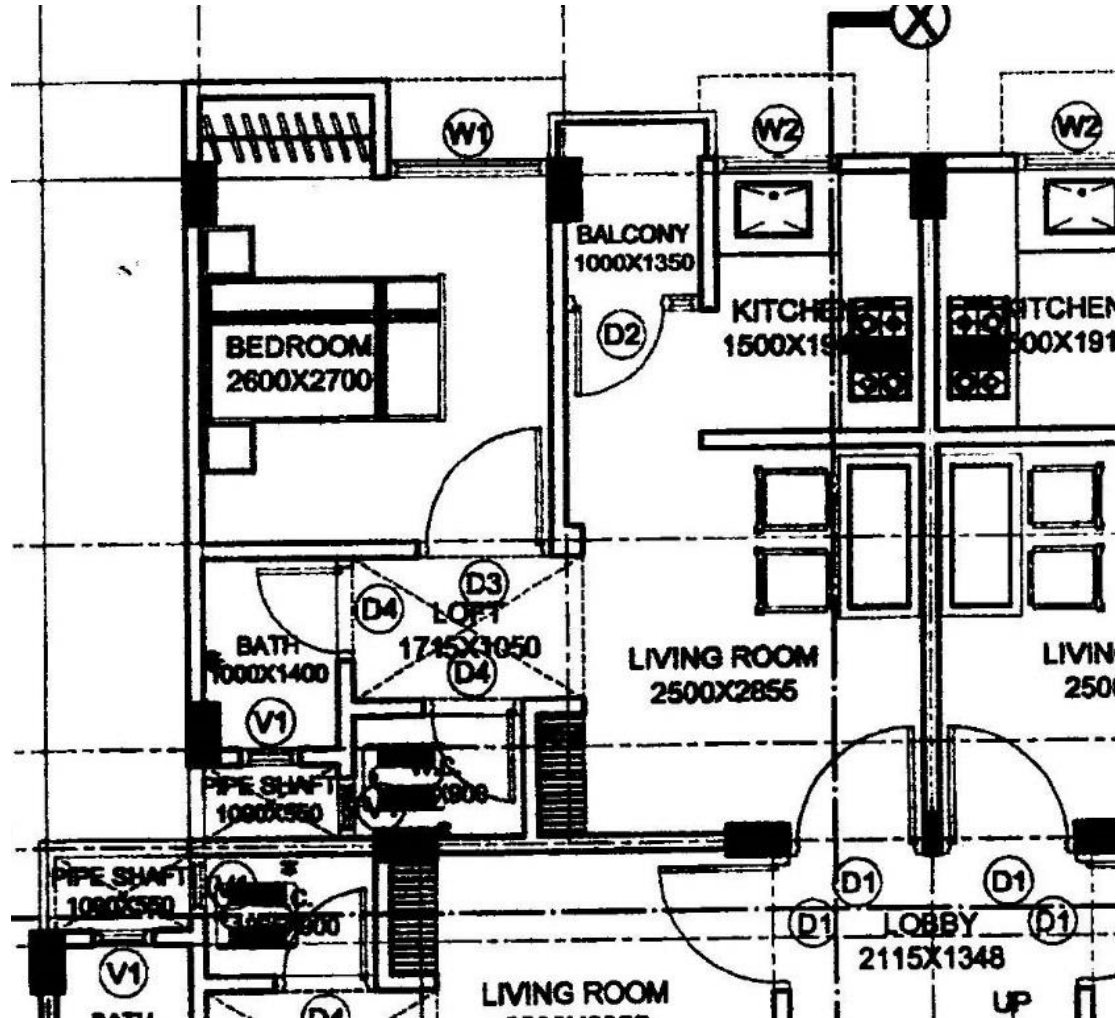
# Affordable Housing Project at Balotra Phase-II

## **Developer – R.D.B. Reality Pvt. Ltd. Kolkata**

- Location – Khed Road, Opposite Housing Board Colony
- Total Land Area – 4.56 Hac. (Govt. Land)
- Topography – Plain
- Land Area for EWS/LIG/MIG-A component - 3.65 Hac (75%)
- No of Units –
  - EWS – 592 units (51.39% > 35% as per HFA)
  - LIG – 384 units
  - MIG A – 176 units
  - Total – 1152 units
- Unit Builtup area of EWS – 30.25 sqm. i.e 325 qs.ft.
- Sale price of EWS – 325@Rs 1000/- per sqft (Rs 3.25 Lakhs)
- Subsidy by Implementing Agency– 325 sqft. @Rs 500/- per sqft i.e Rs.1.62 Lakhs
- Per unit cost-Rs.1.75 Lakhs after AHP subsidy
- Unit area of LIG – 46.40 sqm. @Rs 1000/- per sqft (Rs 5.00 Lakhs)
- Status - Project approved by Local Authority and applications from beneficiaries invited.

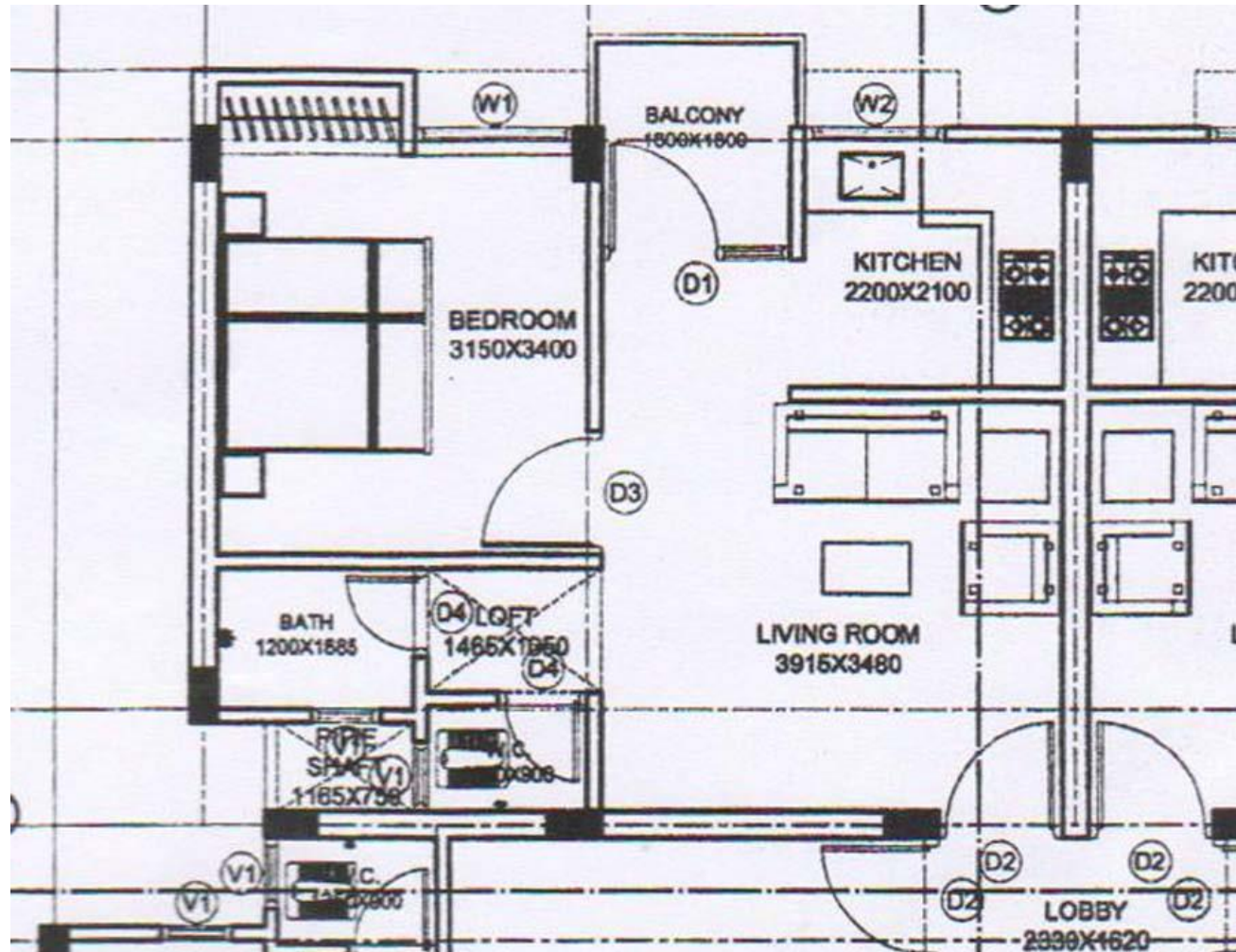


# Affordable Housing Project at Balotra Phase-II



EWS UNIT DESIGN

# Affordable Housing Project at Balotra Phase-II



**LIG UNIT DESIGN**

# Project-5: -Affordable Housing Project at Falna (Pali)

Developer - Prime Civil Infrastructure Pvt. Ltd. Mumbai

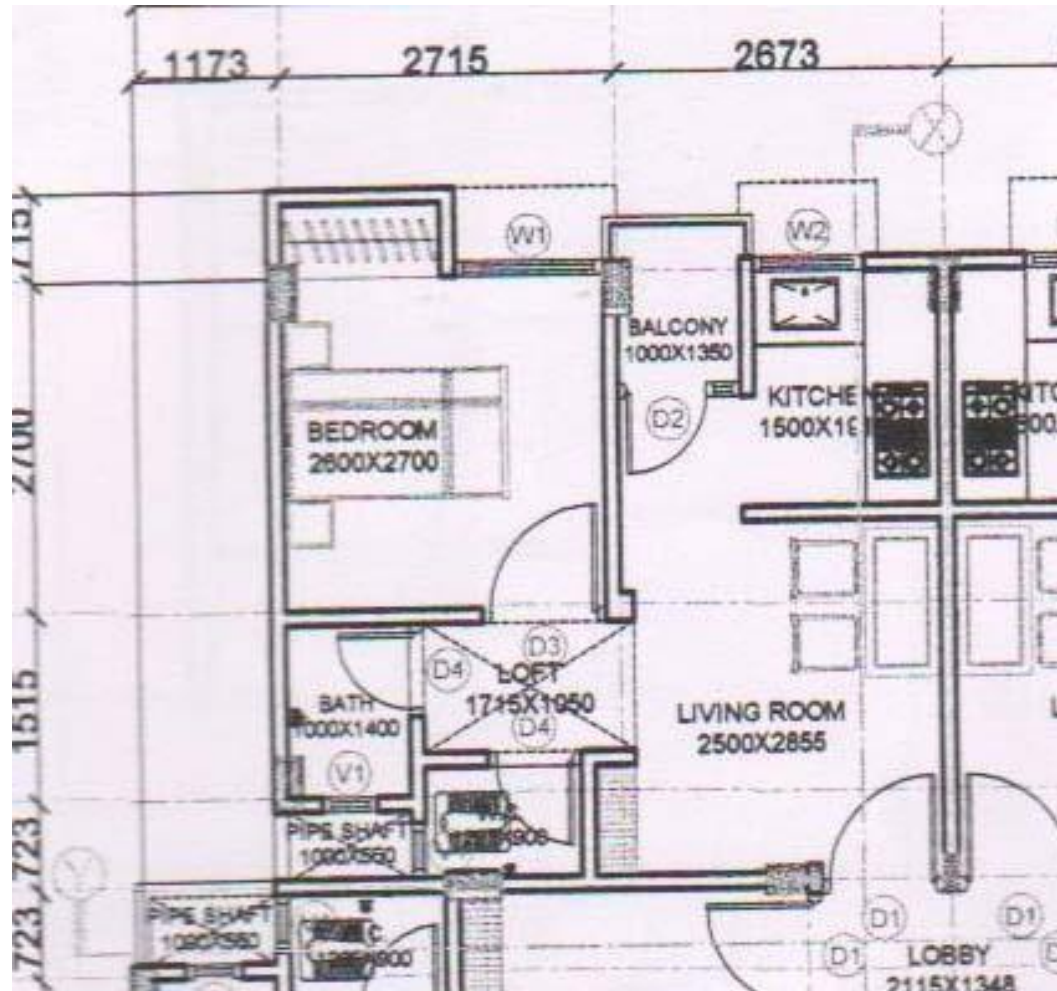


# Affordable Housing Project at Falna (Pali)

## Developer – Prime Civil Infrastructure Pvt. Ltd. Mumbai

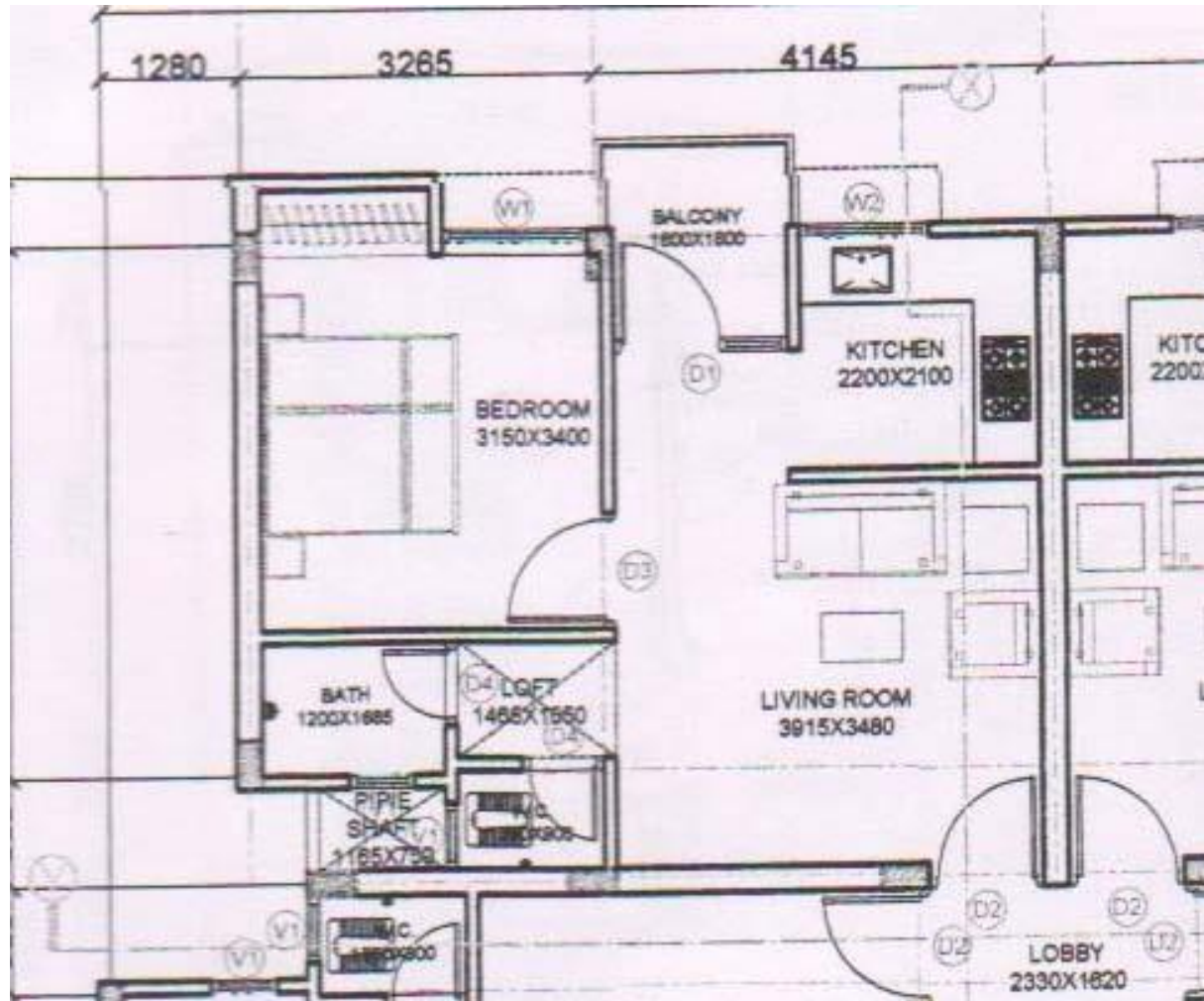
- Location – Rani Road, Falna
- Total Land Area – 4.24 Hac. (Govt. Land)
- Topography – Plain
- Land Area for EWS/LIG/MIG-A component - 3.39 Hac (75%)
- No of Units –
  - EWS – 480 units (48.38% > 35% as per HFA)
  - LIG – 352 units
  - MIG A – 160 units
  - Total – 992 units
- Unit Builtup area of EWS – 30.25 sqm. i.e 325 qs.ft.
- Sale price of EWS – 325@Rs 1000/- per sqft (Rs 3.25 Lakhs)
- Subsidy by Implementing Agency– 325 sqft. @Rs 500/- per sqft i.e Rs.1.62 Lakhs
- Per unit cost-Rs.1.75 Lakhs after AHP subsidy
- Unit area of LIG – 46.40 sqm. @Rs 1000/- per sqft (Rs 5.00 Lakhs)
- Status - Project approved by Local Authority and applications from beneficiaries invited.

# Affordable Housing Project at Falna (Pali)



**EWS UNIT DESIGN**

# Affordable Housing Project at Falna (Pali)



**LIG UNIT DESIGN**

# Project-6 : Affordable Housing Project at DCM Road, Kota

## Developer - M/s Chalet Infratech Kota

- Location - Plot No. 4 & 12 Large Industrial Area Kansua Kota
- Total Land Area - 3.03 hect.
- Topography - Plain
- No of Units -
  - EWS - 640 units (70.01% > 35% as per HFA)
  - LIG - 272 units
  - MIG A - nil
  - Total - 912 units
- Unit builtup area of EWS - 346.68 sqft. @Rs 1200/- per sqft (Rs 4.16 Lakhs)
- Sale price of EWS - 346.68@Rs 1200/- per sqft (Rs 4.16 Lakhs)
- Subsidy by Implementing Agency- 346.68 sqft. @Rs 135/- per sqft i.e Rs.0.47 Lakhs
- Per unit cost-Rs.2.66 Lakhs after AHP subsidy
- Unit area of LIG - 548.33 sqft. @Rs 1200/- per sqft (Rs 6.58 Lakhs)
- Status - This Project has been sanctioned under model no. 2 of Affordable Housing Policy.

# Project-7 : Affordable Housing Project at Bhadhana ,Kota

## Developer - M/s Nav Bharat Nirman Company Kota(JV)

- Location - Bhadhana Scheme Kota
- Total Land Area - 3.24 hect. (EWS/LIG)
- Topography - Plain
- No of Units -
  - EWS - 252 units (46.66% > 35% as per HFA)
  - LIG - 288 units
  - MIG A - nil
  - Total - 540 units
- Unit Builtup area of EWS - 360.22 sqft. @Rs 750/- per sqft (Rs 2.70 Lakhs)
- Sale price of EWS - 360.22@Rs 750/- per sqft (Rs 2.70 Lakhs)
- Subsidy by Implementing Agency- 360.22 sqft. @Rs 26.71/- per sqft i.e Rs.0.10 Lakhs
- Per unit cost-Rs.1.20 Lakhs after AHP subsidy
- Unit area of LIG - 529.12 sqm. @Rs 750/- per sqft (Rs 3.97 Lakhs)
- Status - This Project has been sanctioned, The beneficiaries have already been selected.



# Project-8 : Affordable Housing Project at Mohan Lal Sukhadia Scheme ,Kota

## Developer – M/s Nav Bharat Nirman Company Kota(JV)

- Location – Mohan Lal Sukhadia Scheme Kota
- Total Land Area – 1.92 hect. (EWS/LIG)
- Topography – Plain
- No of Units –
  - EWS – 368 units (79.31% > 35% as per HFA)
  - LIG – 96 units
  - MIG A – nil
  - Total – 464 units
- Unit Builtup area of EWS – 360.22 sqft. @Rs 750/- per sqft (Rs 2.70 Lakhs)
- Sale price of EWS – 360.22@Rs 750/- per sqft (Rs 2.70 Lakhs)
- Subsidy by Implementing Agency– 360.22 sqft. @Rs 81.80/- per sqft i.e Rs.0.30Lakhs
- Per unit cost-Rs.1.20 Lakhs after AHP subsidy
- Unit area of LIG – 529.12 sqm. @Rs 750/- per sqft (Rs 3.97 Lakhs)
- Status - This Project has been sanctioned, the beneficiaries have already been selected.

# Project-9 : Affordable Housing Project at Ranpur Scheme Kota

## Developer - M/s Nav Bharat Nirman Company Kota(JV)

- Location - Ranpur Scheme, Kota
- Total Land Area - 2.40 hect. (EWS/LIG)
- Topography - Plain
- No of Units -
  - EWS - 320 units (79.31% > 35% as per HFA)
  - LIG - 256 units
  - MIG A - nil
  - Total - 576 units
- Unit Builtup area of EWS - 360.22 sqft. @Rs 750/- per sqft (Rs 2.70 Lakhs)
- Sale price of EWS - 360.22@Rs 750/- per sqft (Rs 2.70 Lakhs)
- Subsidy by Implementing Agency- 360.22 sqft. @Rs 40.00/- per sqft i.e Rs.0.15 Lakhs
- Per unit cost-Rs.1.20 Lakhs after AHP subsidy
- Unit area of LIG - 529.12 sqft. @Rs 750/- per sqft (Rs 3.97 Lakhs)
- Status - This Project has been sanctioned, The beneficiaries have already been selected.

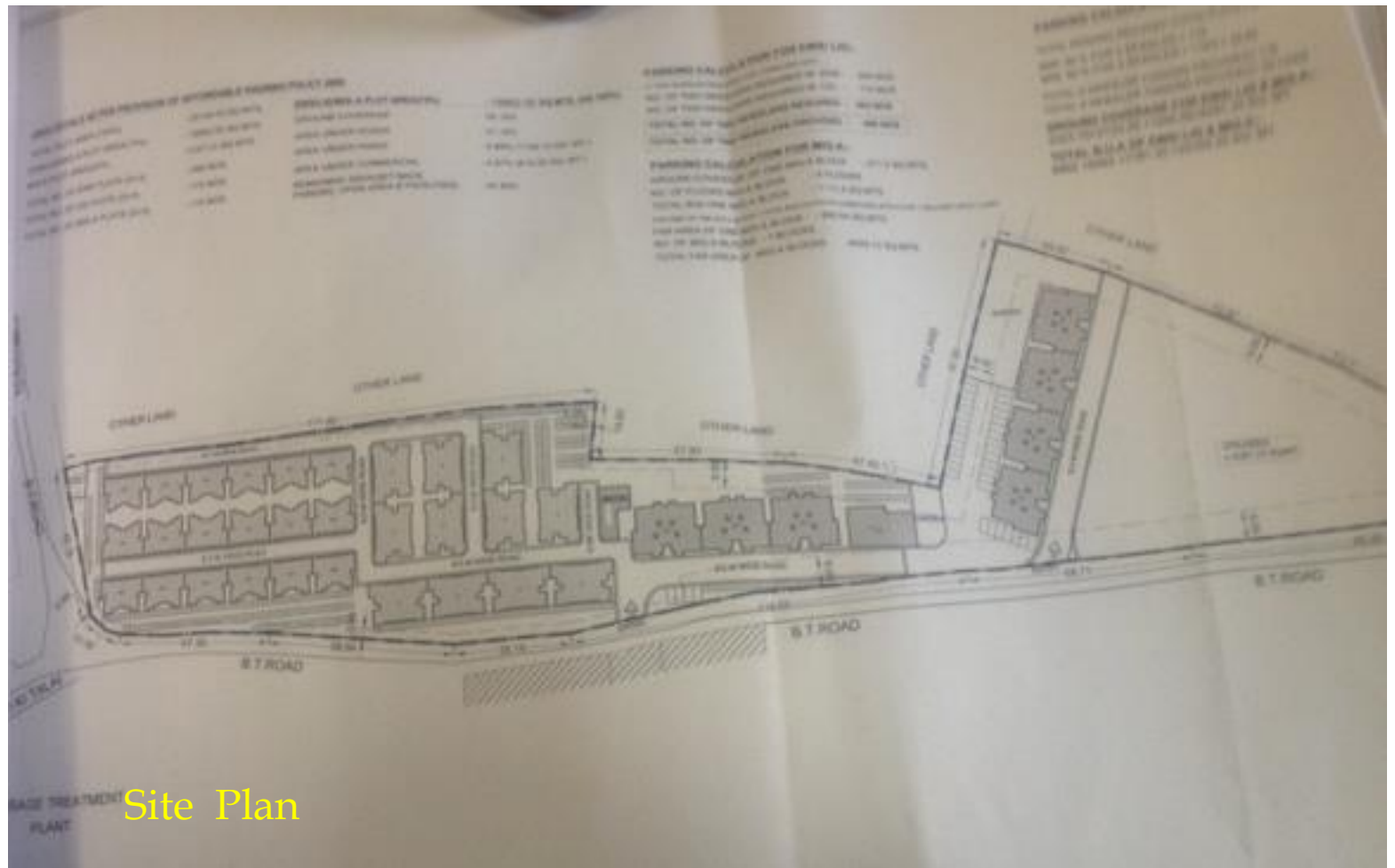
# Project-10 : Affordable Housing Project at Mukundra Vihar Awasiya Yojana ,Kota

## Developer - Urban Improvement Trust Kota

- Location - Mukundra Vihar Awasiya Yoajna Kota
- Total Land Area - 30.05 hect. ( Project Area)
- Topography - Plain
- No of Units - EWS - 144 units  
LIG - 77 units  
MIG A - 216 units  
Total - 563 units
- Plot area of EWS - 36.00 sq.mt.
- Plot area of LIG - 72.00 sq.mt.
- Status - This Project has been sanctioned, the allotment of plots has been made .

# Project-11 : Affordable Housing Project at Nathdawara

Developer - Hema Constructions



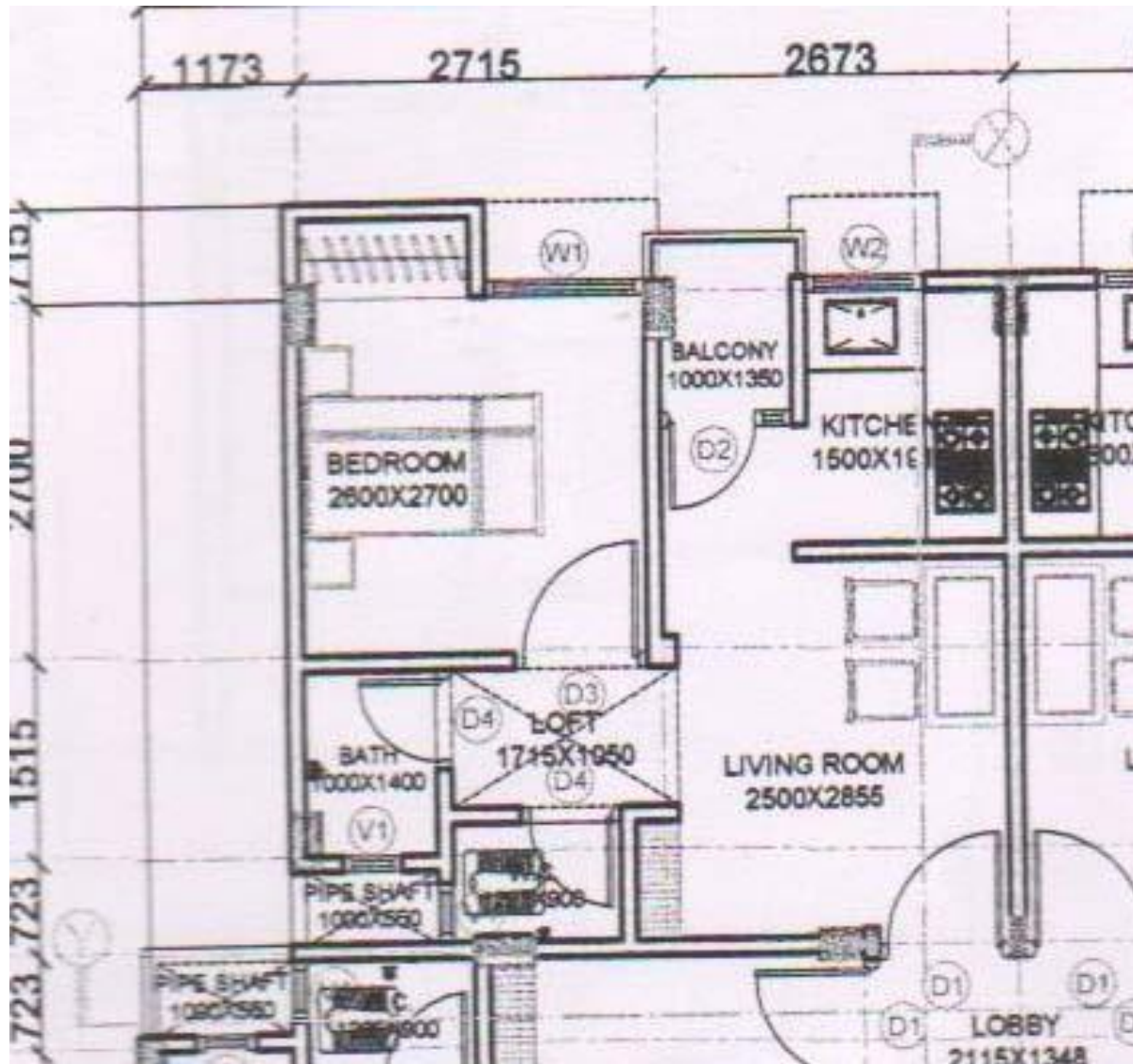
Site Plan

# Project-11 : Affordable Housing Project at Nathdawara

## Developer - Hema Constructions

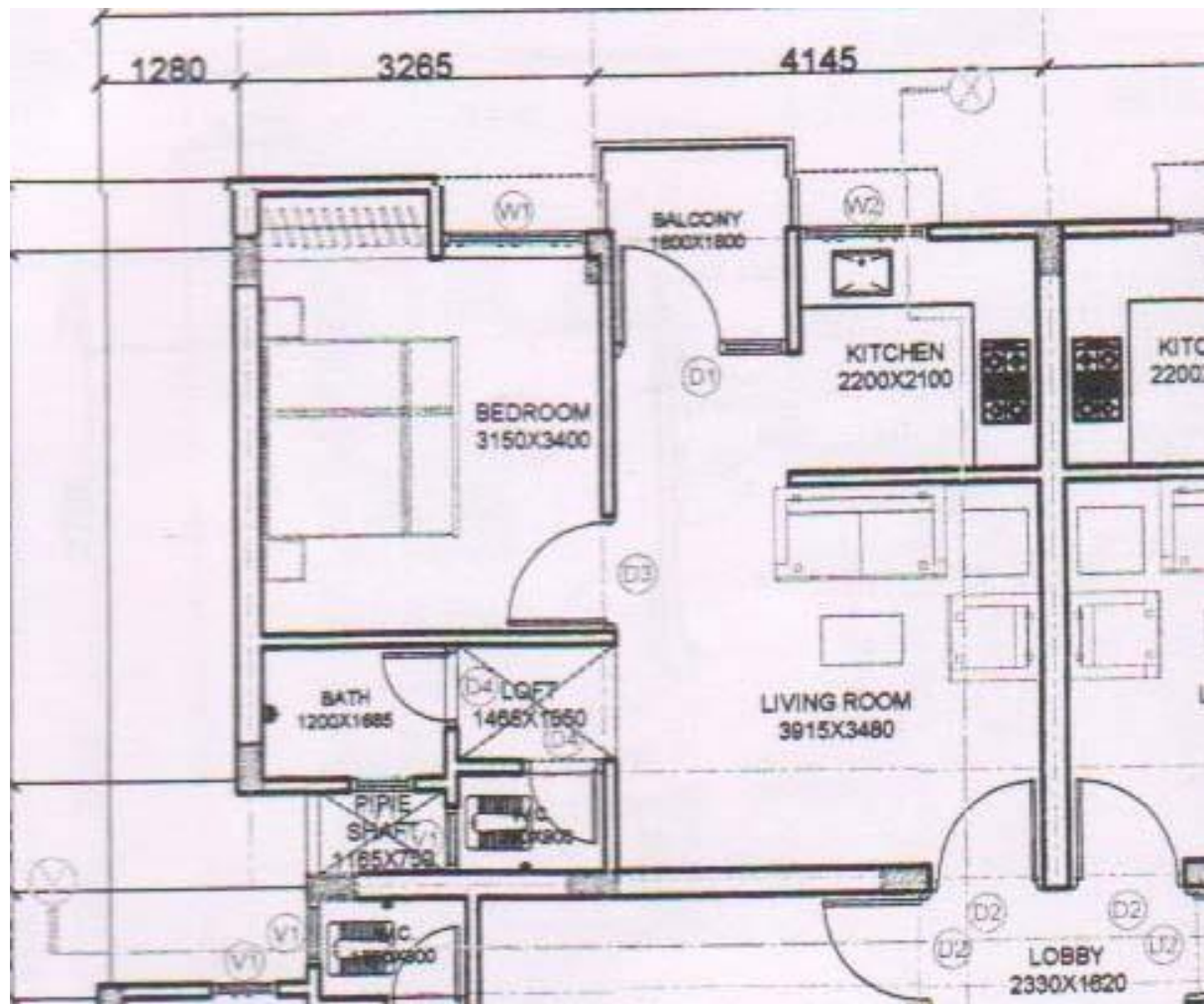
- Location - Ward No.-24 Bhalawato ka Kheda, Nathdawara
- Total Land Area - 1.88 hect. (EWS/LIG)
- Topography - Plain
- No of Units -
  - EWS - 289 units (50.00% > 35% as per HFA)
  - LIG - 173 units
  - MIG A - 116 units
  - Total - 578 units
- Unit builtup area of EWS - 325 sqft. @Rs 1200/- per sqft (Rs 3.90 Lakhs)
- Sale price of EWS - 325@Rs 1200/- per sqft (Rs 3.90 Lakhs)
- Subsidy by Implementing Agency- 325 sqft. @Rs 350/- per sqft i.e Rs.1.14 Lakhs
- Per unit cost-Rs.2.40 Lakhs after AHP subsidy
- Unit area of LIG - 500 sqft. @Rs 1200/- per sqft (Rs 6.00 Lakhs)
- Status - This Project has been sanctioned.

# Affordable Housing Project at Nathdawara



**EWS UNIT DESIGN**

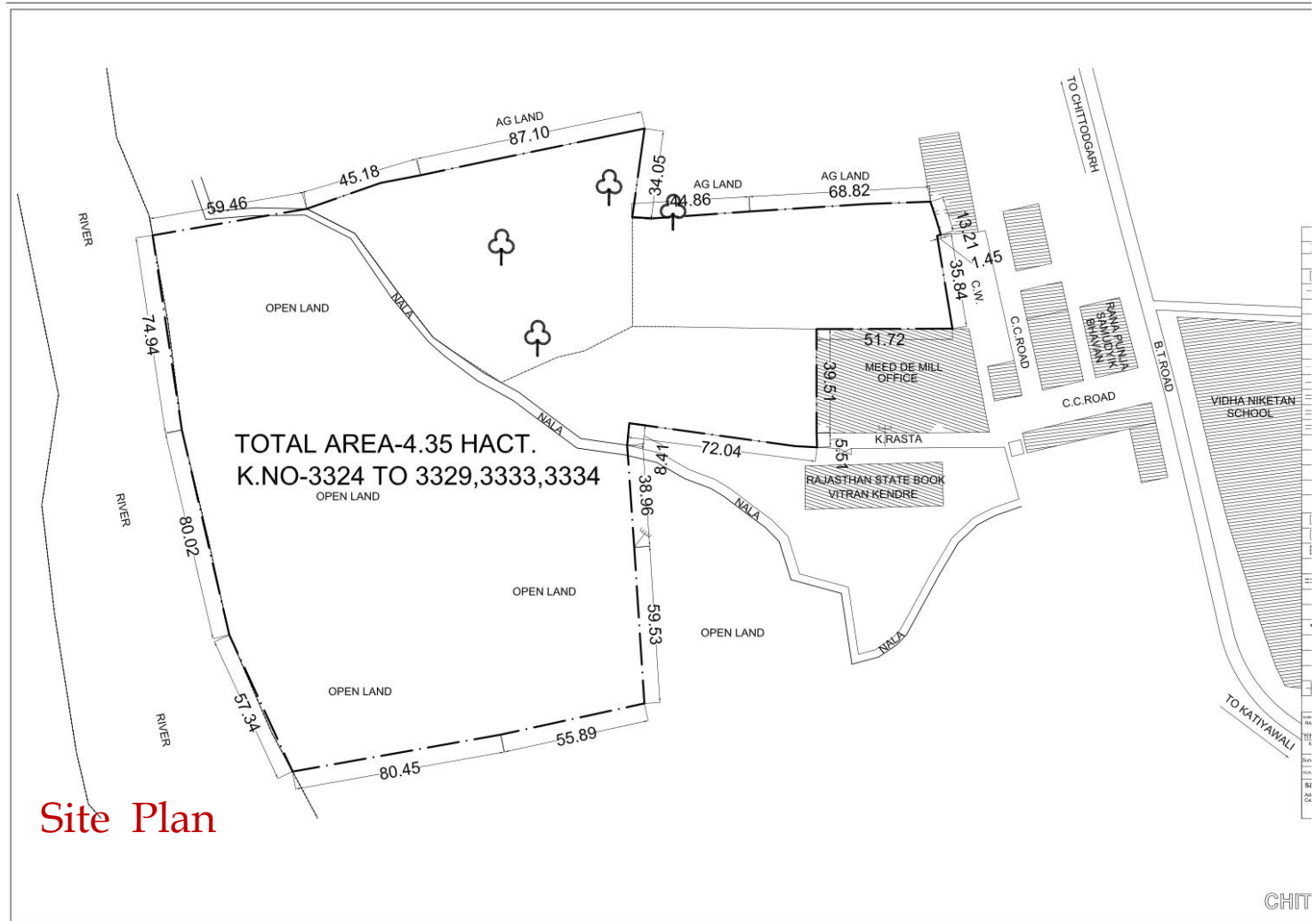
# Affordable Housing Project at Nathdawara



**LIG UNIT DESIGN**

# Project-12 : Affordable Housing Project at Chittorgarh

Developer - Hema Constructions



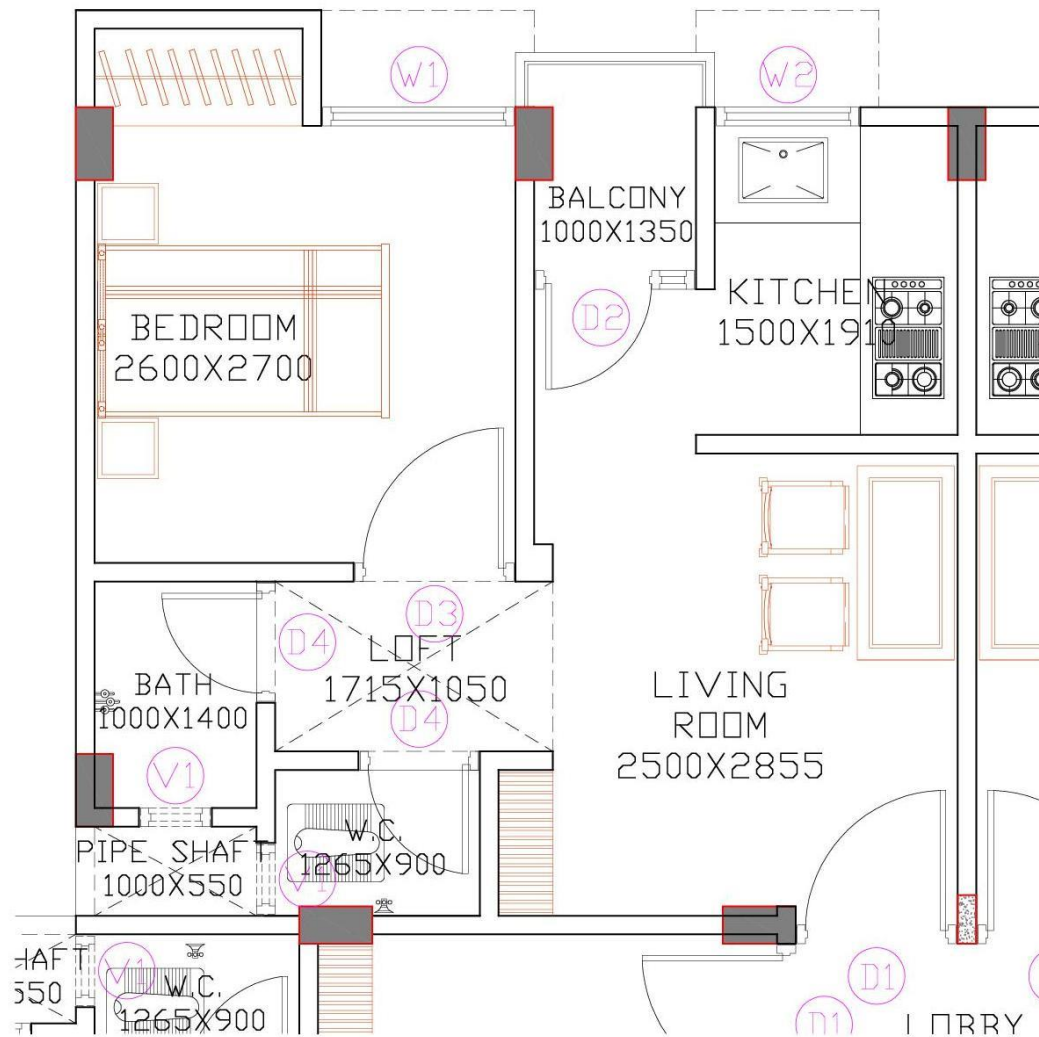


# Project-12 : Affordable Housing Project at Chittorgarh

## Developer - Hema Constructions

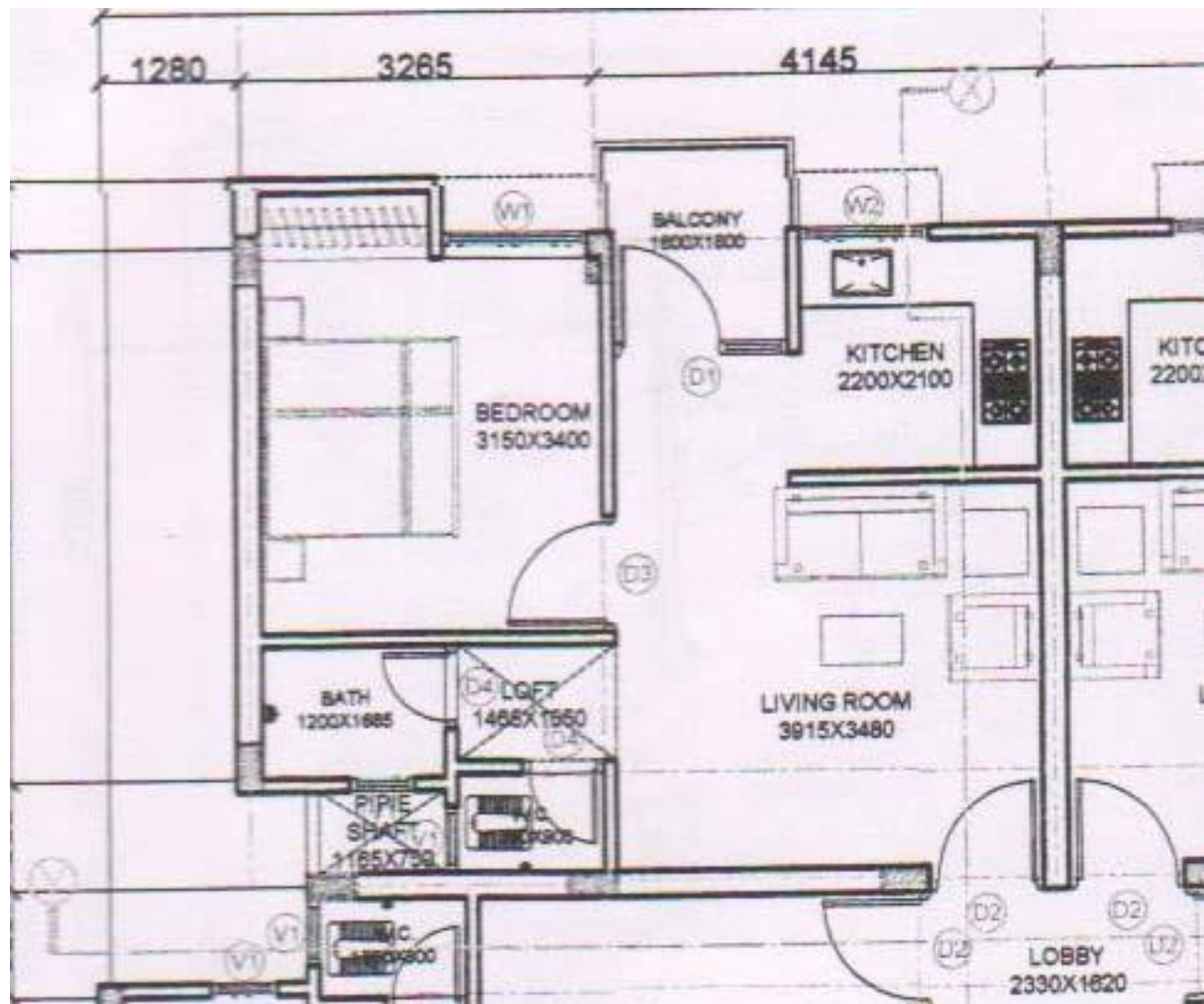
- Location - Gandhinagar, Chittorgarh
- Total Land Area - 1.46 hect. (EWS/LIG)
- Topography - Plain
- No of Units - EWS - 304 units (59.37% > 35% as per HFA)  
LIG - 208 units  
MIG A - nil  
Total - 512 units
- Unit area of EWS - 325 sqft. @Rs 1200/- per sqft (Rs 3.90 Lakhs)
- Sale price of EWS - 325@Rs 1200/- per sqft (Rs 3.90 Lakhs)
- Subsidy by Implementing Agency- 325 sqft. @Rs 350/- per sqft i.e Rs.1.14 Lakhs
- Per unit cost-Rs.2.40 Lakhs after AHP subsidy
- Unit area of LIG - 500 sqft. @Rs 1200/- per sqft (Rs 6.00 Lakhs)
- Status- This Project has been sanctioned.

# Affordable Housing Project at Chittorgarh



**EWS UNIT DESIGN**

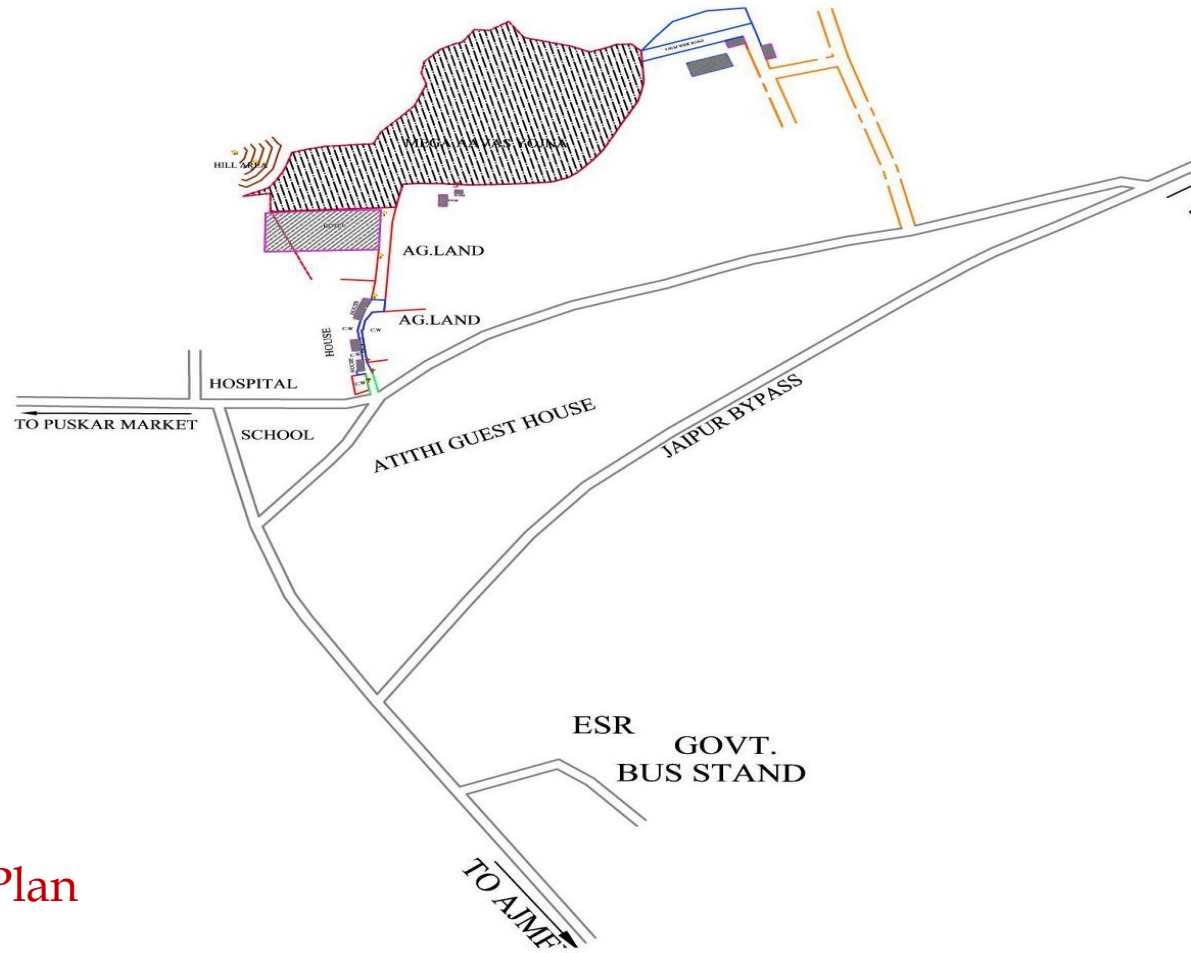
# Affordable Housing Project at Chittorgarh



**LIG UNIT DESIGN**

# Project-13 : Affordable Housing Project at Pushkar

Developer – R.D.B. Reality &Infrastructure Ltd.



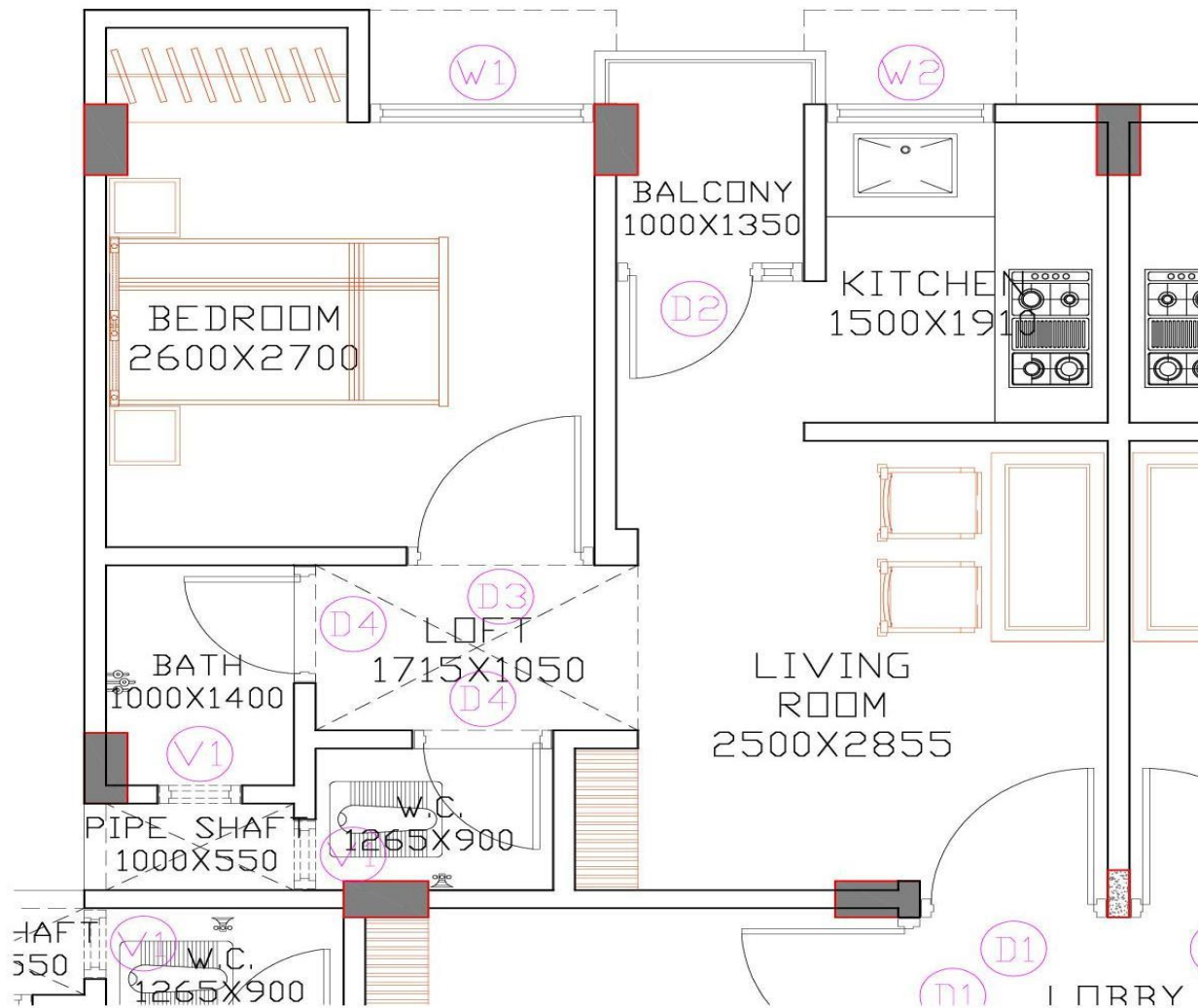
Site Plan

# Project-13 : Affordable Housing Project at Pushkar

## Developer – R.D.B. Reality &Infrastructure Ltd.

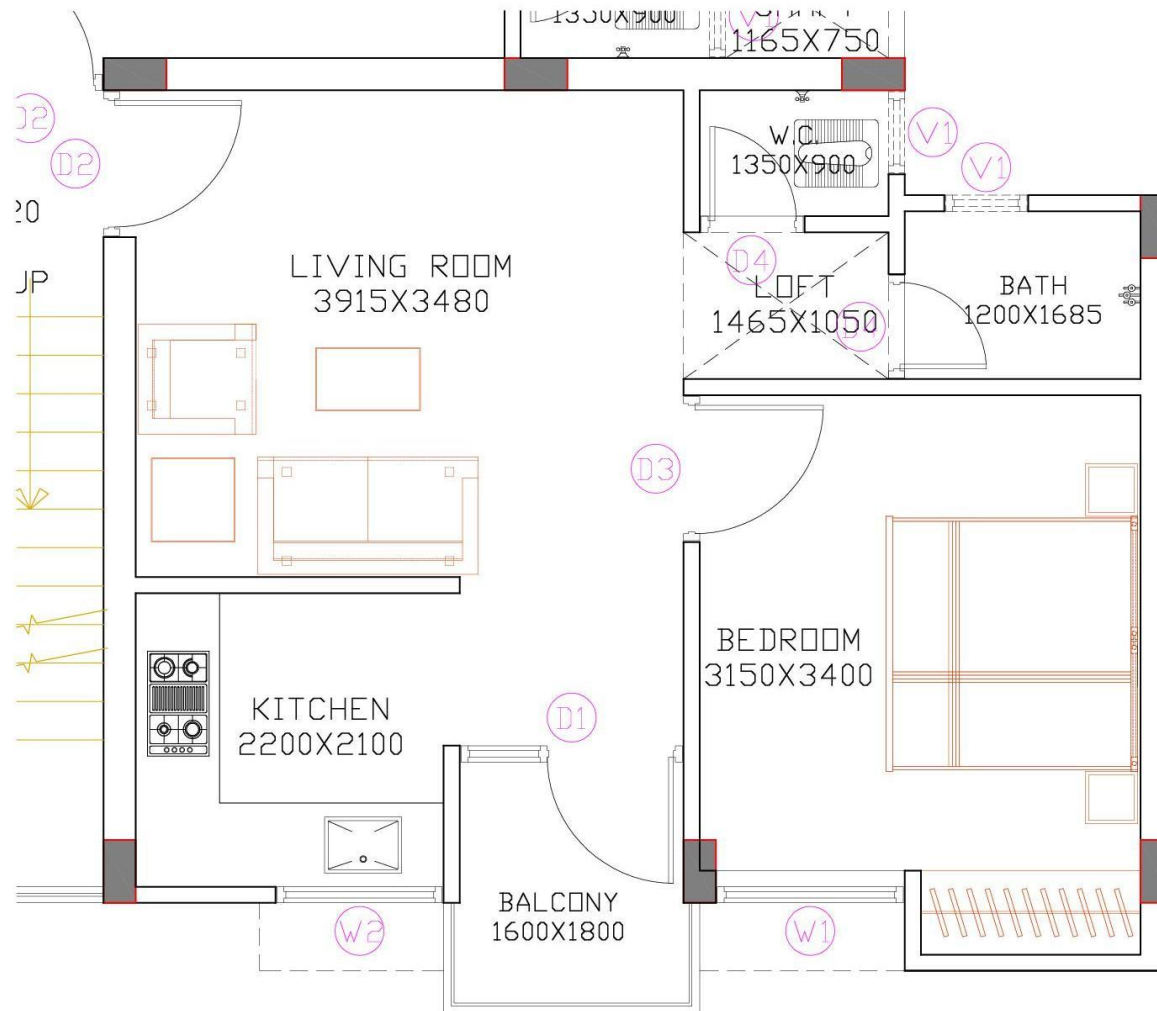
- Location – Khasra No. 195 Near Pareek B.Ed. College, Pushkar
- Total Land Area – 1.57 hect. (EWS/LIG)
- Topography – Plain
- No of Units – EWS – 296 units (50.00% > 35% as per HFA)  
LIG – 207 units  
MIG A – 89 units  
Total – 592 units
- Unit area of EWS – 325 sqft. @Rs 1200/- per sqft (Rs 3.90 Lakhs)
- Sale price of EWS – 325@Rs 1200/- per sqft (Rs 3.90 Lakhs)
- Subsidy by Implementing Agency– 325 sqft. @Rs 350/- per sqft  
i.e Rs.1.14 Lakhs
- Per unit cost-Rs.2.40 Lakhs after AHP subsidy
- Unit area of LIG – 500 sqft. @Rs 1200/- per sqft (Rs 6.00 Lakhs)
- Status – This Project has been sanctioned.

# Affordable Housing Project at Pushkar



**EWS UNIT DESIGN**

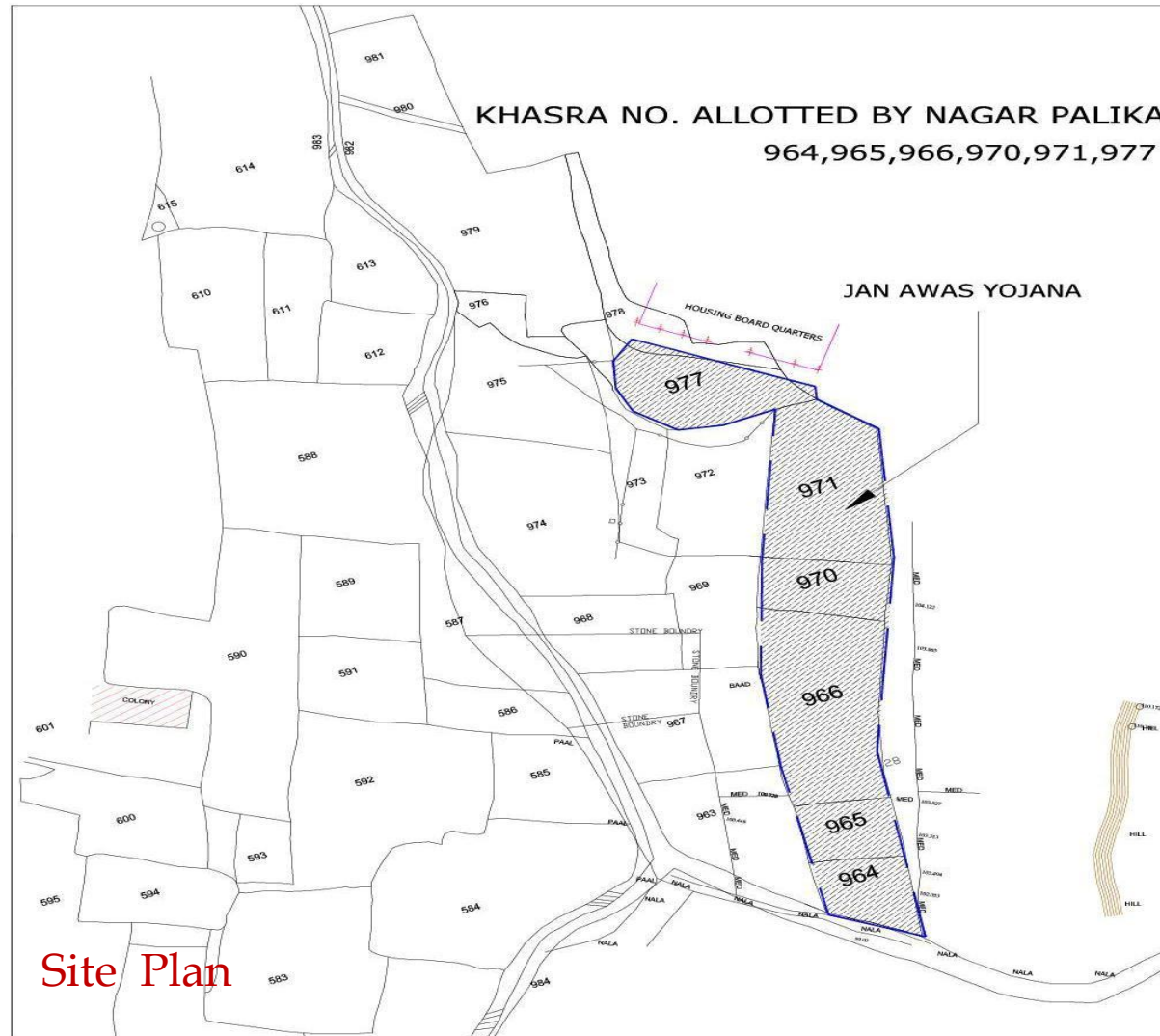
# Affordable Housing Project at Pushkar



**LIG UNIT DESIGN**

# Project-14 : Affordable Housing Project at Kishangarh

Developer - R.D.B. Reality &Infrastructure Ltd.



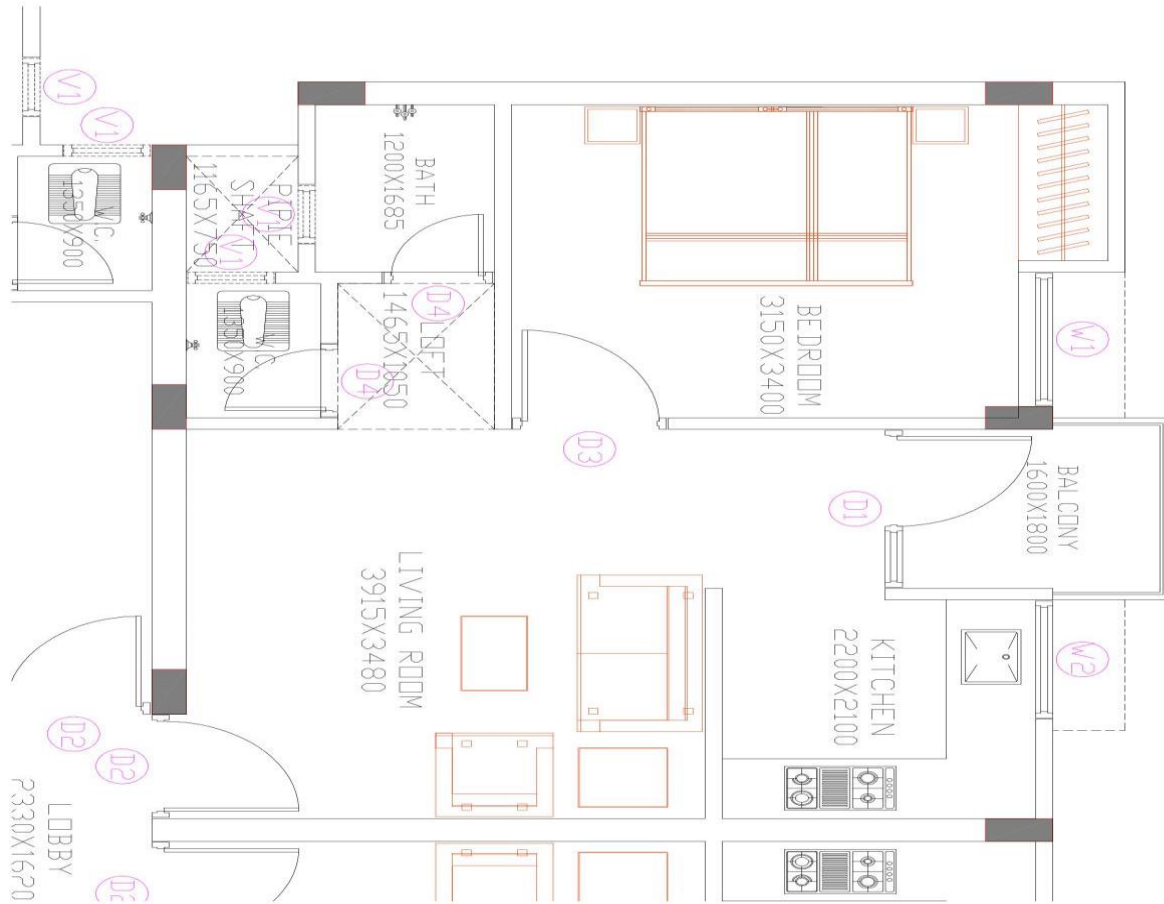


# Project-14 : Affordable Housing Project at Kishangarh

## Developer - R.D.B. Reality & Infrastructure Ltd.

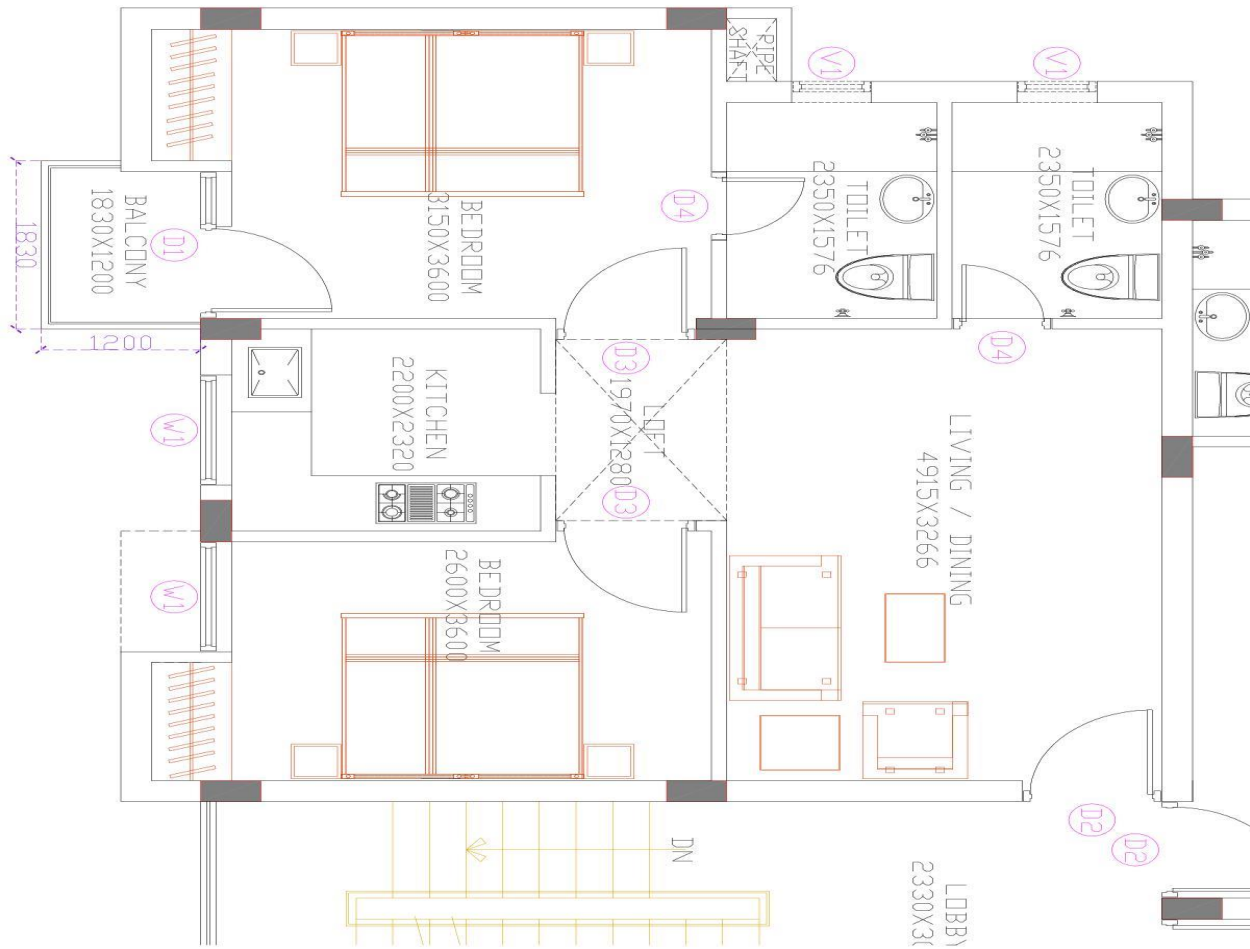
- Location - Near Housing Board , Khoda Ganesh Road, Kishangarh
- Total Land Area - 5.51 hect. (EWS/LIG)
- Topography - Plain
- No of Units - EWS - 714 units (49.07% > 35% as per HFA)  
LIG - 519 units  
MIG A - 222 units  
Total - 1455 units
- Unit area of EWS - 325 sqft. @Rs 1200/- per sqft (Rs 3.90 Lakhs)
- Sale price of EWS - 325@Rs 1200/- per sqft (Rs 3.90 Lakhs)
- Subsidy by Implementing Agency- 325 sqft. @Rs 350/- per sqft i.e Rs.1.14 Lakhs
- Per unit cost-Rs.2.40 Lakhs after AHP subsidy
- Unit area of LIG - 500 sqft. @Rs 1200/- per sqft (Rs 6.00 Lakhs)
- Status- This Project has been sanctioned.

# Affordable Housing Project at Kishangarh



**EWS UNIT DESIGN**

# Affordable Housing Project at Kishangarh



**LIG UNIT DESIGN**

**Thank you...**