

# HARYANA



**Progress under BSUP, IHSDP & RAY  
Review Meeting 26-02-2014**

# Urban Local Bodies in Haryana

|                                 |           |
|---------------------------------|-----------|
| <b>Total Urban Local Bodies</b> | <b>78</b> |
| <b>Municipal Corporations</b>   | <b>09</b> |
| <b>Municipal Councils</b>       | <b>14</b> |
| <b>Municipal Committees</b>     | <b>55</b> |



# **BASIC SERVICE TO URBAN POOR (BSUP-JNNURM)**

# Projects Approved under Basic Services Urban Poor (BSUP - JNNURM)

| Sr. No | Description   | FINANCIAL (Rs. in Crore) |                       |              | Physical    |                               |                 |              |
|--------|---|--------------------------|-----------------------|--------------|-------------|-------------------------------|-----------------|--------------|
|        |   | Project cost             | Total amount released | Utilization  | Targets     | Achievements as on 31-01-2014 |                 |              |
|        |   |                          |                       |              |             | DUs Completed                 | DUs in progress | DUs allotted |
| 1      | Housing Project for Dabua Colony, Faridabad. (1968 DUs) | 38.96                    | 38.96                 | 39.51        | 1968        | 1968                          | 0               | 202          |
| 2      | Housing Project for Babu Nagar, Faridabad (1280 DUs)    | 25.27                    | 25.27                 | 19.48        | 1280        | 928                           | 0               | 0            |
|        | <b>Total</b>  | <b>64.23</b>             | <b>64.23</b>          | <b>58.99</b> | <b>3248</b> | <b>2896</b>                   | <b>0</b>        | <b>202</b>   |



# **INTEGRATED HOUSING & SLUM DEV. PROGRAMME (IHSDP)**

# Summary of IHSDP Projects approved under IHSDP

(Rs. in crore)

| Sr. No                                       | City                       | Central Share | State Share (including Ben' share) | Approved Cost | Amount released by GOI. | Nos. of (DUs) |
|--|----------------------------|---------------|------------------------------------|---------------|-------------------------|---------------|
| <b>Projects approved prior to March-2012</b> |                            |               |                                    |               |                         |               |
| <b>1</b>                                     | Bhiwani                    | 23.14         | 5.78                               | 28.92         | 23.14                   | 1679          |
| <b>2</b>                                     | Dadri                      | 9.69          | 2.42                               | 12.11         | 9.69                    | 605           |
| <b>3</b>                                     | Ambala Sadar               | 9.13          | 2.28                               | 11.41         | 9.13                    | 423           |
| <b>4</b>                                     | Ambala city                | 12.32         | 3.08                               | 15.40         | 12.32                   | 495           |
| <b>5</b>                                     | Naraingarh                 | 5.76          | 1.44                               | 7.19          | 5.76                    | 611           |
| <b>6</b>                                     | Rewari                     | 19.20         | 4.80                               | 24.00         | 19.20                   | 485           |
| <b>7</b>                                     | Jagadhri                   | 18.80         | 4.70                               | 23.50         | 18.80                   | 968           |
| <b>8</b>                                     | <b>Panchkula (Phase-I)</b> | <b>14.94</b>  | <b>3.73</b>                        | <b>18.67</b>  | <b>8.61</b>             | <b>2072</b>   |
| <b>9</b>                                     | Jhajjar                    | 5.73          | 1.43                               | 7.16          | 2.86                    | 431           |
| <b>10</b>                                    | Kalka                      | 2.07          | 0.52                               | 2.59          | 1.04                    | 130           |
| <b>11</b>                                    | Yamuna Nagar               | 8.96          | 2.24                               | 11.20         | 4.48                    | 652           |
| <b>12</b>                                    | Ladwa                      | 2.85          | 0.71                               | 3.56          | 1.42                    | 200           |

# Summary of IHSDP Projects approved under IHSDP

(Rs. in crore)

| Sr. No                                       | City                                  | Central Share | State Share  | Approved Cost | Amount released by GOI. | Nos. of (DUs) |
|--|---------------------------------------|---------------|--------------|---------------|-------------------------|---------------|
| <b>Projects approved prior to March-2012</b> |                                       |               |              |               |                         |               |
| 13   | Jind                                  | 14.93         | 3.73         | 18.67         | 7.47                    | 933           |
| 14   | Pinjore                               | 3.03          | 0.76         | 3.79          | 1.51                    | 150           |
| 15   | Panchkula (Phase-II)                  | 0             | 0            | 0             | 8.86                    | 0             |
| 16   | Panchkula (Phase-III)                 | 0             | 0            | 0             | 8.84                    | 0             |
| 17   | Hissar (Phase-I)<br>Curtailed project | 5.91          | 6.45         | 12.36         | 9.48                    | 424           |
| 18   | Bandhu Nagar (cancelled)              | 0             | 0            | 0             | 1.27                    | 0             |
|  | <b>Sub-Total-I</b>                    | <b>160.43</b> | <b>40.09</b> | <b>200.53</b> | <b>153.88</b>           | <b>10258</b>  |

# Summary of IHSDP Projects approved under IHSDP

(Rs. in crore)

| Sr. No    | City                                   | Central Share | State Share  | Approved Cost | Amount released by GOI. | Nos. of (DUs) |
|-----------|--|---------------|--------------|---------------|-------------------------|---------------|
|           | <b>Projects approved in March-2012</b> |               |              |               |                         |               |
| 18        | Ambala city (Ph-II)                    | 4.70          | 1.18         | 5.88          | 2.35                    | 0             |
| <b>19</b> | Ambala Sadar (Ph-II)                   | 4.87          | 1.22         | 6.09          | 2.44                    | 0             |
| <b>20</b> | Naraingarh (Ph-II)                     | 4.11          | 1.02         | 5.13          | 2.06                    | 0             |
| <b>21</b> | Jagadhri (Ph-II)                       | 4.76          | 1.19         | 5.95          | 2.38                    | 0             |
| <b>22</b> | Yamuna Nagar (Ph-II)                   | 5.10          | 1.28         | 6.38          | 2.55                    | 0             |
| <b>23</b> | Pinjore (Ph-II)                        | 0.60          | 0.15         | 0.75          | 0.30                    | 0             |
| <b>24</b> | Kalka (Ph-II)                          | 0.71          | 0.18         | 0.89          | 0.36                    | 0             |
| <b>25</b> | Hisar (Ph-II)                          | 12.88         | 4.70         | 17.58         | 6.44                    | 195           |
|           | <b>Sub-Total-II</b>                    | <b>37.73</b>  | <b>10.91</b> | <b>48.64</b>  | <b>18.88</b>            | <b>195</b>    |
|           | <b>Grand Total (I+II)</b>              | <b>198.16</b> | <b>51.00</b> | <b>249.17</b> | <b>172.76</b>           | <b>10453</b>  |



# Progress of IHSDP Projects approved under IHSDP as on 31-01-14

(Rs. in crore)

| Sr. No. | IHSDP Projects   | Amt released to DUDA/ULBs | Amount Utilized | %age of Utilization | DUs approved | DUs completed | DUs in progress | Total DUs covered | %age |
|---------|------------------|---------------------------|-----------------|---------------------|--------------|---------------|-----------------|-------------------|------|
| 1       | Bhiwani          | 27.38                     | 26.86           | 98%                 | 1679         | 1670          | 9               | 1679              | 100% |
| 2       | Ch. Dadri        | 11.57                     | 11.54           | 100%                | 605          | 587           | 18              | 605               | 100% |
| 3       | Ambala Sadar     | 11.03                     | 9.78            | 89%                 | 423          | 307           | 84              | 391               | 92%  |
| 4       | Ambala city      | 14.96                     | 12.06           | 81%                 | 495          | 438           | 57              | 495               | 100% |
| 5       | Naraingarh       | 6.67                      | 5.64            | 85%                 | 611          | 377           | 229             | 606               | 99%  |
| 6       | Rewari           | 23.60                     | 17.95           | 76%                 | 485          | 359           | 82              | 441               | 91%  |
| 7       | Jagadhri         | 22.67                     | 18.39           | 81%                 | 968          | 885           | 83              | 968               | 100% |
| 8       | Panchkula (Ph-I) | 9.72                      | 9.72            | 100%                | 2388         | 2072          | 0               | 2072              | 100% |
| 9       | Jhajjar          | 4.78                      | 3.70            | 77%                 | 431          | 224           | 119             | 343               | 80%  |
| 10      | Kalka            | 1.60                      | 1.14            | 71%                 | 130          | 48            | 35              | 83                | 64%  |
| 11      | Yamuna Nagar     | 5.83                      | 5.63            | 97%                 | 652          | 609           | 43              | 652               | 100% |

# Progress of IHSDP Projects approved under IHSDP as on 31-01-14

(Rs. in crore)

| Sr. No. | IHSDP Projects                          | Amt released to DUDA/ULBs | Amount Utilized | %age of Utilization | DUs approved | DUs completed | DUs in progress | Total DUs covered | %age |
|---------|---|---------------------------|-----------------|---------------------|--------------|---------------|-----------------|-------------------|------|
| 12      | Ladwa                                   | 1.79                      | 1.76            | 98%                 | 200          | 193           | 7               | 200               | 100% |
| 13      | Jind                                    | 8.38                      | 7.30            | 87%                 | 933          | 645           | 288             | 933               | 100% |
| 14      | Pinjore                                 | 1.79                      | 0.86            | 42%                 | 150          | 47            | 24              | 71                | 47%  |
| 15      | Hissar (Phase-I)<br>(curtailed Project) | 11.84                     | 11.07           | 93%                 | 424          | 358           | 66              | 424               | 100% |
| 16      | Panchkula (Phase-II)                    | 9.84                      | 0.00            | 0%                  | 0            | 0             | 0               | 0                 | 0%   |
| 17      | Panchkula (Phase-III)                   | 4.91                      | 0.00            | 0%                  | 0            | 0             | 0               | 0                 | 0%   |
| 18      | Ambala city (Ph-II)                     | 2.94                      | 0.22            | 7%                  | 0            | 0             | 0               | 0                 | 0    |
| 19      | Ambala Sadar (Ph-II)                    | 3.05                      | 0               | 0                   | 0            | 0             | 0               | 0                 | 0    |
| 20      | Naraingarh (Ph-II)                      | 5.57                      | 0               | 0                   | 0            | 0             | 0               | 0                 | 0    |

# Progress of IHSDP Projects approved under IHSDP as on 31-01-14

| Sr. No.      | IHSDP Projects       | Amt released to DUDA/ ULBs | Amount Utilized | %age of Utilization | DUs approved | DUs completed | DUs in progress | Total DUs covered | %age |
|--------------|----------------------|----------------------------|-----------------|---------------------|--------------|---------------|-----------------|-------------------|------|
| 21           | Jagadhari (Ph-II)    | 2.97                       | 0.12            | 4%                  | 0            | 0             | 0               | 0                 | 0    |
| 22           | Yamuna Nagar (Ph-II) | 3.19                       | 0.31            | 10%                 | 0            | 0             | 0               | 0                 | 0    |
| 22           | Pinjore (Ph-II)      | 0.38                       | 0               | 0                   | 0            | 0             | 0               | 0                 | 0    |
| 23           | Kalka (Ph-II)        | 0.44                       | 0               | 0                   | 0            | 0             | 0               | 0                 | 0    |
| 25           | Hisar (Ph-II)        | 7.95                       | 4.58            | 58%                 | 195          | 0             | 107             | 107               | 55%  |
| <b>Total</b> |                      | 203.26                     | 144.38          | 71%                 | 10453        | 8822          | 1248            | 10070             | 96%  |

# Status of DUs under IHSDP as on 31-01-14

| Sr. No.  | Description                          | Targets<br>(DUs approved) | Relocation<br>Projects | In-Situ<br>construction |
|----------|--------------------------------------|---------------------------|------------------------|-------------------------|
| <b>A</b> | <b>Total Dwelling Units</b>          | <b>10453</b>              | <b>2072</b>            | <b>8381</b>             |
| <b>B</b> | <b>I Dwelling Units completed</b>    | <b>8822</b>               | <b>2072</b>            | <b>6750</b>             |
|          | <b>II Dwelling Units in Progress</b> | <b>1248</b>               | <b>0</b>               | <b>1248</b>             |
|          | <b>III Total Coverage</b>            | <b>10070</b>              | <b>2072</b>            | <b>7988</b>             |
| <b>C</b> | <b>DUs not started</b>               | <b>383</b>                | <b>0</b>               | <b>383</b>              |
| <b>D</b> | <b>Percentage of coverage</b>        | <b>96%</b>                | <b>100%</b>            | <b>96%</b>              |



# **RAJIV AWAS YOJANA (RAY)**

# Towns of Haryana approved

| Sr. No. | Town        | ULB                   |
|---------|-------------|-----------------------|
| 1       | Rohtak      | Municipal Corporation |
| 2       | Ambala      | Municipal Corporation |
| 3       | Panchkula   | Municipal Corporation |
| 4       | Yamunanagar | Municipal Corporation |
| 5       | Hisar       | Municipal Corporation |
| 6       | Karnal      | Municipal Corporation |
| 7       | Panipat     | Municipal Corporation |
| 8       | Gurgaon     | Municipal Corporation |
| 9       | Faridabad   | Municipal Corporation |
| 10      | Sirsa       | Municipal Council     |

# Status of RAY projects approved

Rs. in crore

| Sr. No. | Pilot project | EWS DUs     | Total Cost    | 1 <sup>st</sup> installment released | 2 <sup>nd</sup> installment approved and funds likely to be released | Total amt.    |
|---------|---------------|-------------|---------------|--------------------------------------|--|---------------|
| 1       | Rohtak        | 1518        | 95.89         | 15.88                                | 17.64  | 33.52         |
| 2       | Ambala        | 200         | 59.83         | 9.91                                 | 11.63  | 21.54         |
| 3       | Sirsa         | 2144        | 95.00         | 14.84                                | 18.43  | 33.27         |
| 4       | Y.Nagar       | 0           | 60.37         | 9.51                                 | 11.17  | 20.68         |
| 5       | Hisar         | 1508        | 62.73         | Funds awaited                        |  |               |
|         | <b>Total</b>  | <b>5370</b> | <b>373.82</b> | <b>50.14</b>                         | <b>58.87</b>   | <b>109.01</b> |

# Status of DPRs ( submitted to MoHUPA)

Rs. in crore

| Sr. No. | PROJECTS                          | EWS DUs | Total Cost |
|---------|-----------------------------------|---------|------------|
| 1       | Rohtak (2 <sup>nd</sup> DPR)      | 2280    | 94.73      |
| 2       | Sirsa (2 <sup>nd</sup> DPR)       | 1056    | 40.21      |
| 3       | Yamunanagar (2 <sup>nd</sup> DPR) | 3849    | 120.09     |
| 4       | Bahadurgarh                       | 892     | 34.80      |
| 5       | Hansi                             | 192     | 7.74       |
| 6       | Faridabad                         | 1440    | 55.33      |
|         | <b>Total</b>                      | 9517    | 352.90     |



# Status of Slum Free City Plan of Action (SFCPoA), Faridabad

| Sr. No. | Description   | Status              |
|---------|---|---------------------|
| 1       | Conducting of Slum/Socio-Economic survey, GIS mapping, bio-metric survey etc. | Completed           |
| 2       | Total No. of slums identified in Faridabad town                               | 63                  |
| 3       | No. of slum Households identified   | 48889               |
| 4       | Slum HHs squatting on MCF land  | 27021<br>(26 slums) |
| 5       | Slum HHs squatting of land of other Central/State Govt. Departments           | 21868<br>(37 slums) |
| 6       | SFCPoA, Faridabad submitted to MoHUPA   | 06.01.2014          |

# Status of Signing of MoA for implementation of RAY and Reforms

MOA signed and forwarded to MoHUPA vide letter dated 23.02.2014

| <b>SI No.</b> | <b>Mandatory Reform</b>   | <b>Year 1 (13-14)</b> | <b>Year 2 (14-15)</b> | <b>Year 3 (15-16)</b> | <b>Year 4 (16-17)</b> |
|---------------|---|-----------------------|-----------------------|-----------------------|-----------------------|
| 1.            | Commitment and willingness to assign mortgage-able lease rights to slum dwellers              |                       |                       | √                     |                       |
| 2.            | Reservation of 15% of residential FAR/FSI   |                       |                       | √                     |                       |
| 3.            | A non-lapsable earmarking of 25% of the budget  |                       | √                     |                       |                       |
| 4.            | Creating and establishing a municipal cadre   |                       | √                     |                       |                       |
| <b>SI No.</b> | <b>Optional Reforms</b>   | <b>Year 1 (13-14)</b> | <b>Year 2 (14-15)</b> | <b>Year 3 (15-16)</b> | <b>Year 4 (16-17)</b> |
| 1.            | Formulation of State Policy for Affordable Housing.   |                       |                       |                       | √                     |
| 2.            | Amendments of Master Plans to provide for inclusive growth                                    |                       |                       | √                     |                       |
| 3.            | Simplification of the processes and procedures of sanctioning buildings and building bye-laws |                       |                       | √                     |                       |
| 4.            | Amendments in the Rent Control Act balancing the interest of landlords and tenants.           |                       |                       |                       | √                     |

# Beneficiary led construction of in-situ DUs

In view of the provisions of revised RAY guidelines, it has been decided that the beneficiary would construct her/his DU upto plinth level by investing her/his own contribution. Thereafter, subsidy amount (total cost – beneficiary share) approved in RAY project/ DPR, will be credited to her/his bank account in three equal installments.

| <b>Sr. No.</b> | <b>DU's completion Stage</b>                  | <b>No. of installments</b>  | <b>Towns population below 5 lakh</b> | <b>Towns population above 5 lakh</b> |
|----------------|---|-----------------------------|--------------------------------------|--------------------------------------|
| 1              | <b>Upto plinth level</b>                      | Beneficiary's contribution  | 10%                                  | 25%                                  |
| 2              | <b>On completion of Plinth level</b>          | 1 <sup>st</sup> Installment | 1/3 <sup>rd</sup>                    | 1/3 <sup>rd</sup>                    |
| 3              | <b>On completion of laying of Roof lentil</b> | 2 <sup>nd</sup> Installment | 1/3 <sup>rd</sup>                    | 1/3 <sup>rd</sup>                    |
| 4              | <b>After completion of DU</b>                 | 3 <sup>rd</sup> Installment | 1/3 <sup>rd</sup>                    | 1/3 <sup>rd</sup>                    |



**Municipal Corporation Rohtak**  
नगर निगम रोहतक

# Rajiv Awas Yojna

- **Rohtak city** has an area of 14632 hectares and is Tehsil & District headquarter; lies in the center of Haryana and is part of National Capital Region.
- Located 75 km northwest of Delhi & 250 km south of the state capital
- ~~Chandigarh~~ to 7 major Cities with 3 National Highways (NH10, NH71, NH 71A) & 2 State Highways (SH16, SH18)
- Connected to Delhi, Bahadurgarh, Bhiwani, Jind, Gohana, Rewari , Panipat by Rail
- Population (477877) in 2011, with decadal growth Rate of 25.13%.



**Rohtak City in Rohtak District**

- **Rohtak** district boasts of high literacy rate of 74.56% and is a major Education hub in the state.
- The city hosts a range of reputed Education institutions such as IIM Rohtak, MDU, PGIMS etc. apart from various private Institutes.
- Rohtak also has a range of reputed schools .



Delhi Public  
School,  
Rohtak



- Rohtak has a large scale industrial units such as Sugar Mills, Processed food Units, Precision screws etc. and large number of ancillary units; Milk product units
- Rohtak has prospects of growing up as a Logistic Hub
- Real Estate Industry is growing very fast in Rohtak
- Rohtak has prospects of growing up as a Food Processing Industry hub of Haryana, since it has Food Corporation of India (FCI) Godowns and Warehouses.

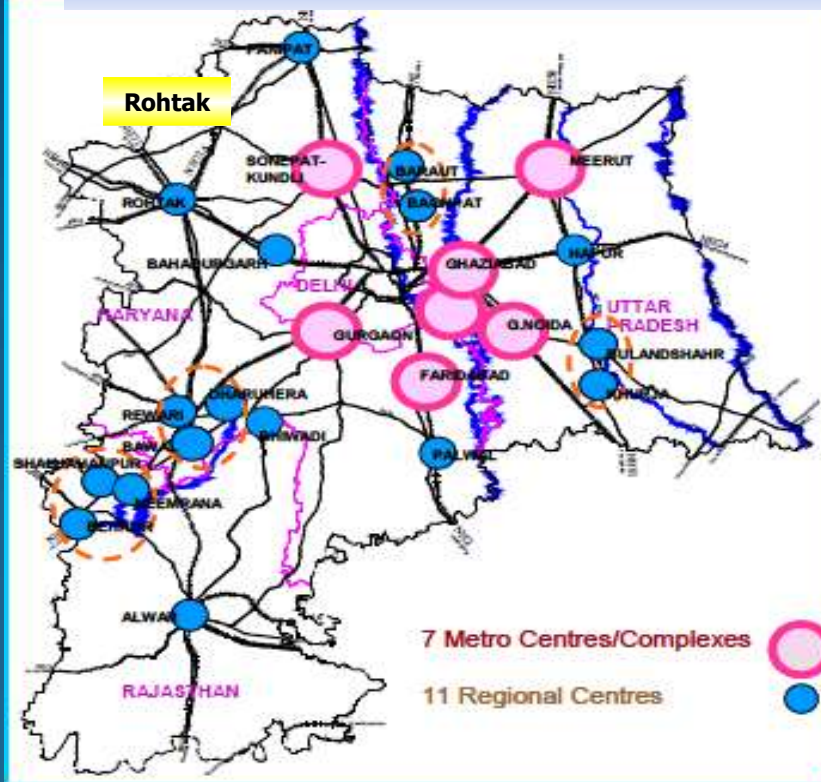


**Rohtak Bus Terminal**

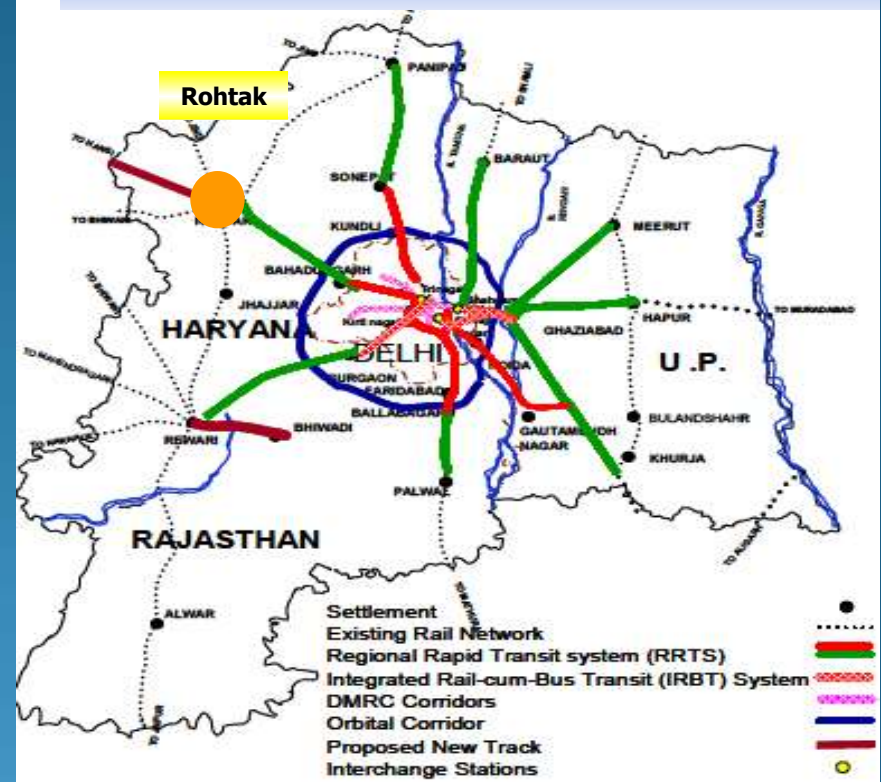


**Haryana Cooperative Sugar Mill**

Settlement Pattern of National Capital Region

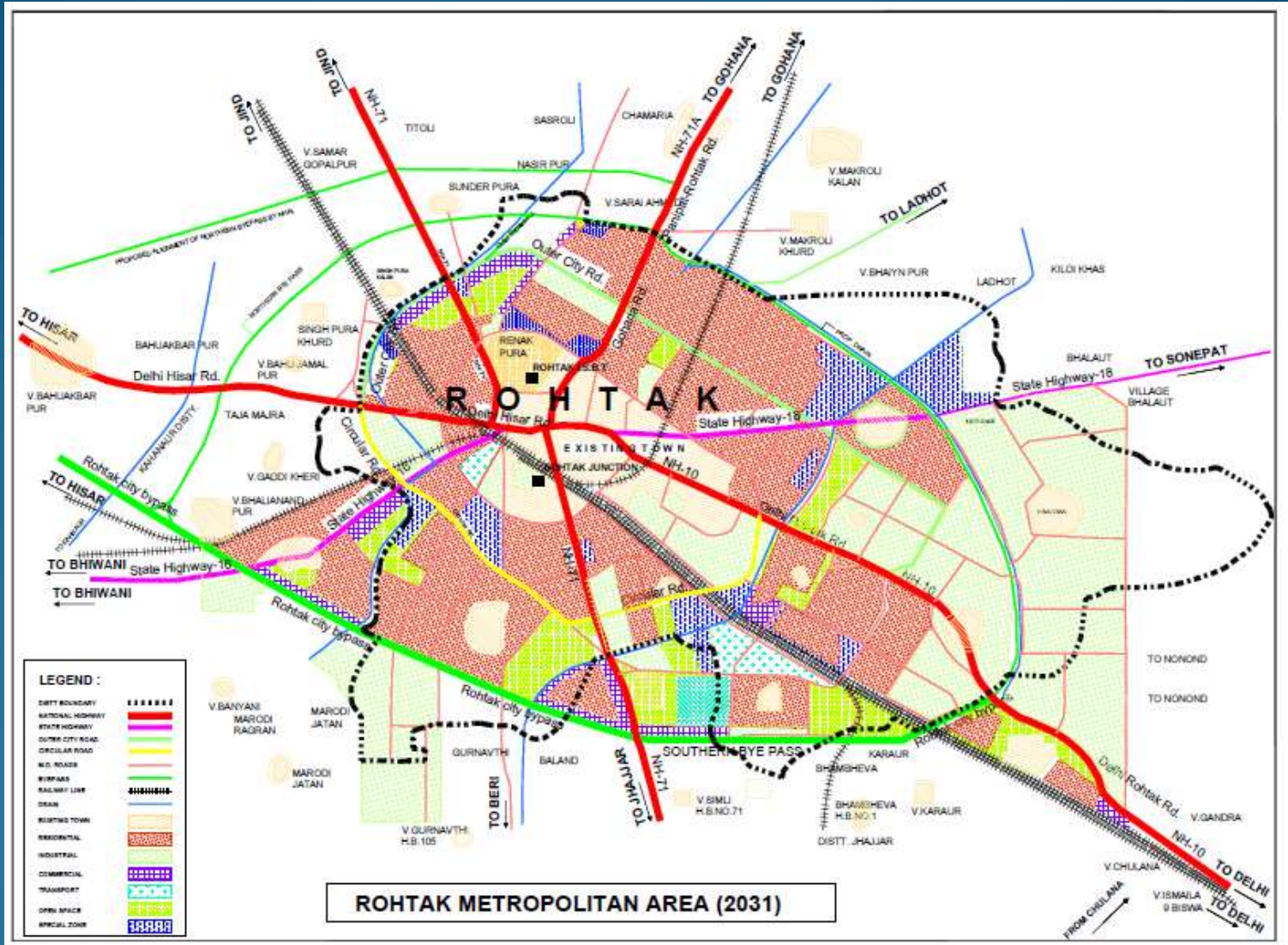


Rail Network Connecting Rohtak with other NCR towns



Rohtak is one of the eight **Priority Towns (Regional Centers)** of **National Capital Region (NCR) Regional Plan 2001**





# At A Glance

|                                    |                |
|------------------------------------|----------------|
| ● Total Population of MCR          | 477877         |
| ● Total Slum Population            | 158492(33.16%) |
| ● Total No. Of Slums               | 71             |
| ● Slums covered in Pilot Project   | 08             |
| ● Balance Slums                    | 63             |
| ● Slums Proposed in the Project    | 51             |
| ● Infrastructure Proposed in       | 15             |
| ● Land area covered in the Project | 6.041 Sq. K.M  |
| ● Population Covered in 51 Slums   | 88870          |
| ● Household Covered                | 17774          |

# Components in 8 SLUMS of Pilot Project

**Total Proposed Amount=9589.18 Lacs**

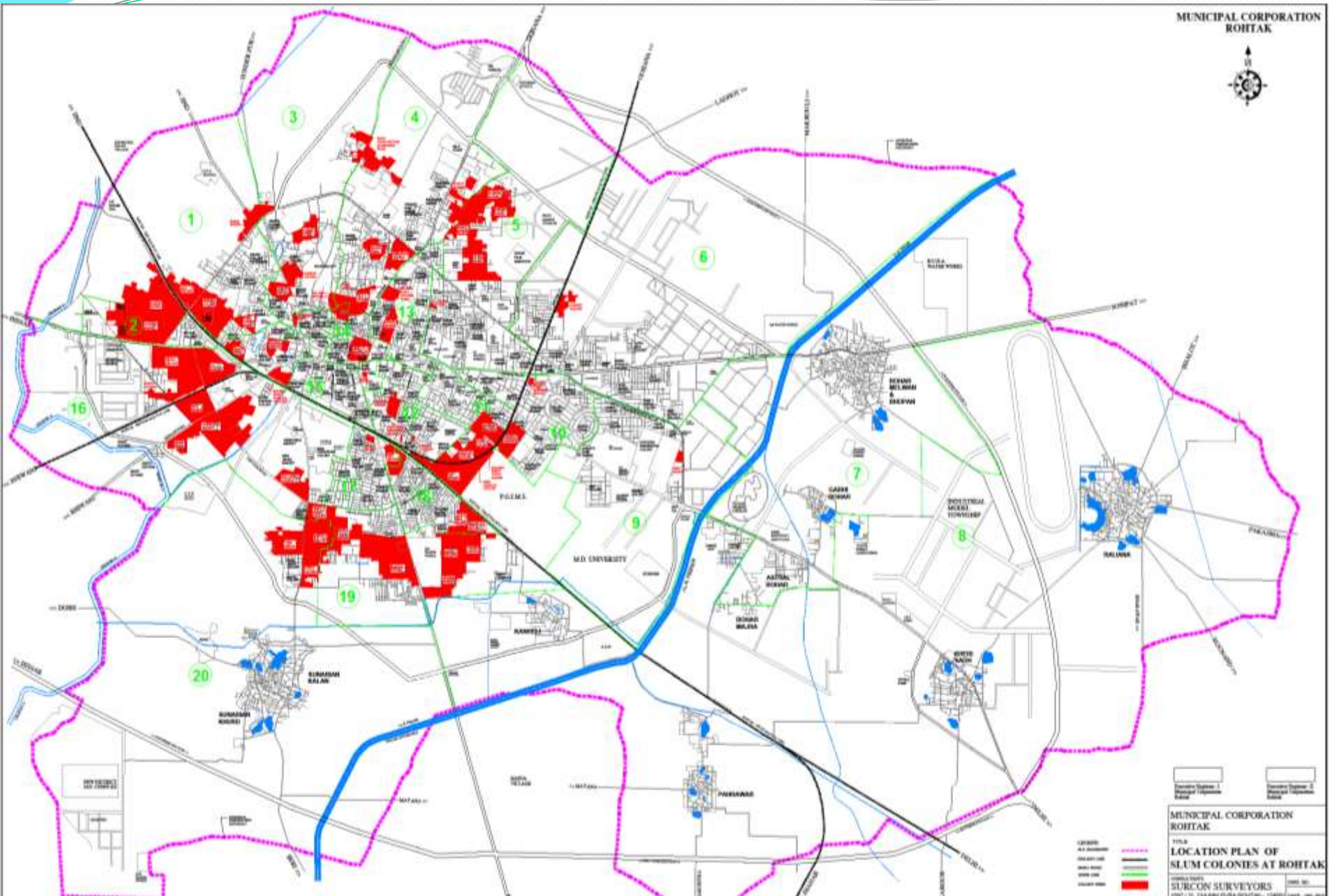
| Component         | Quantity        | Total Amount in Lacs | Progress                           |
|-------------------|-----------------|----------------------|------------------------------------|
| Housing           | 1518<br>Numbers | 5464.80              | 1074 in Progress                   |
| Water Supply      | Nil             | 0.00                 |                                    |
| Sewerage          | 118441<br>Metre | 2286.71              | Tender to be opened on<br>2.3.2014 |
| Streets           | 126900<br>SQM   | 1003.78              |                                    |
| Drains            | 92266<br>Metre  | 645.86               |                                    |
| Street Light      | Nil             | 0.00                 |                                    |
| Community Centres | Nil             | 0.00                 |                                    |
| O& M 2%           |                 | 188.02               |                                    |

# Proposed Components in 51 SLUMS

## Total Proposed Amount=9412.86 Lacs

| Component         | Quantity          | Total Amount in Lacs |
|-------------------|-------------------|----------------------|
| Housing           | 2280<br>Numbers   | 6840.00              |
| Water Supply      | Nil               | 0.00                 |
| Sewerage          | Nil               | 0.00                 |
| Streets           | 197461.01<br>SQM  | 1561.92              |
| Drains            | 92701.56<br>Metre | 648.91               |
| Street Light      | Nil               | 0.00                 |
| Community Centres | Nil               | 0.00                 |
| O& M 2%           |                   | 362.03               |

# LOCATION PLAN OF SLUM COLONIES



## LIST OF SLUM AREAS Covered in Pilot Project

| SR.NO.                | NAME OF SLUM                | AREA IN SQ. KM. | POPULATION |
|-----------------------|-----------------------------|-----------------|------------|
| 1                     | Paharawar                   | 0.49            | 3920       |
| 2                     | Kanheli                     | 0.29            | 2066       |
| 3                     | Garhi Bohar                 | 0.28            | 3596       |
| 4                     | Sunarian Kalan & khurd      | 1.04            | 12271      |
| 5                     | Baliana                     | 1.23            | 8800       |
| 6                     | Bohar                       | 1.24            | 13409      |
| 7                     | Majra                       | 0.17            | 749        |
| 8                     | Kheri Sadh                  | 0.82            | 5824       |
| Balance SLUM COLONIES |                             |                 |            |
| 1                     | Ajeet Colony                | 0.068           | 1545       |
| 2                     | Ambedkar Nagar              | 0.086           | 2093       |
| 3                     | Anand Nagar                 | 0.094           | 1857       |
| 4                     | Balmiki Bast Patel Nagar    | 0.009           | 678        |
| 5                     | Balmiki Basti Gohana Road   | 0.033           | 2342       |
| 6                     | Balmiki Basti Subhash Nagar | 0.005           | 567        |
| 7                     | Barsi Nagar                 | 0.081           | 1987       |
| 8                     | Basti Kutana                | 0.025           | 1234       |
| 9                     | Chhoturam Colony            | 0.073           | 1324       |
| 10                    | Chinyot Colony              | 0.089           | 1876       |
| 11                    | Chunni Pura                 | 0.004           | 543        |
| 12                    | Ekta Colony                 | 0.157           | 1492       |
| 13                    | Fateh Puri                  | 0.060           | 1678       |
| 14                    | Gandhi Nagar-1              | 0.083           | 2098       |
| 15                    | Gandhi Nagar-2              | 0.095           | 2143       |
| 16                    | Geeta Colony                | 0.018           | 1287       |
| 17                    | Hanuman Colony              | 0.091           | 4110       |
| 18                    | Hari Singh Colony           | 0.082           | 2342       |
| 19                    | J.P.Colony                  | 0.166           | 1234       |

|    |                               |       |      |
|----|-------------------------------|-------|------|
| 20 | Jatiji Mohalla                | 0.004 | 567  |
| 21 | Kabeer Colony                 | 0.039 | 678  |
| 22 | Kabeer Colony Jind Road       | 0.058 | 1678 |
| 23 | Kartar Pura                   | 0.041 | 1234 |
| 24 | Katch Garhi                   | 0.047 | 2372 |
| 25 | New Chinyot Colony            | 0.025 | 1234 |
| 26 | New Janta Colony              | 0.103 | 1134 |
| 27 | New Rajendera Colony          | 0.339 | 3421 |
| 28 | New Vijay Nagar               | 0.115 | 1567 |
| 29 | Para Mohalla                  | 0.048 | 2345 |
| 30 | Patel Nagar                   | 0.050 | 2567 |
| 31 | Preet Vihar                   | 0.125 | 1256 |
| 32 | Quila Mohalla                 | 0.076 | 2345 |
| 33 | Rainak Pura                   | 0.075 | 2376 |
| 34 | Rajiv Nagar Pipal Wali Gali   | 0.007 | 456  |
| 35 | Rajiv Vihar                   | 0.098 | 1567 |
| 36 | Balmiki Basti Ramleela ground | 0.039 | 1786 |
| 37 | Ravidass Nagar                | 0.039 | 1564 |
| 38 | Saini Anand Pura              | 0.048 | 1256 |
| 39 | Sainik Colony                 | 0.302 | 1978 |
| 40 | Salara Mohalla                | 0.064 | 1123 |
| 41 | Sanichri Basti Ram Nagar      | 0.003 | 867  |
| 42 | Sanjay Colony                 | 0.206 | 2552 |
| 43 | Sanjay Nagar                  | 0.063 | 2591 |
| 44 | Sheetal Nagar                 | 0.341 | 2345 |
| 45 | Sher Vihar                    | 0.077 | 1678 |
| 46 | Sri Nagar Colony              | 0.155 | 3920 |
| 47 | Tek Nagar                     | 0.080 | 2824 |
| 48 | Tez Colony                    | 0.071 | 1545 |
| 49 | Vinay Nagar                   | 0.012 | 568  |
| 50 | Amrit Colony                  | 0.223 | 2458 |
| 51 | Rishi Nagar                   | 0.090 | 1234 |
| 52 | Basant Vihar Ladhot Road      | 0.074 | 1456 |

| SR.NO. | NAME OF SLUM                      | AREA IN SQ. KM. | POPULATION |
|--------|-----------------------------------|-----------------|------------|
| 53     | Uttam Vihar                       | 0.188           | 1689       |
| 54     | Shastri Nagar Ladhok Road         | 0.135           | 1879       |
| 55     | Shastri Nagar Hissar Road         | 0.303           | 2347       |
| 56     | Shiv Colony                       | 0.106           | 1256       |
| 57     | Surya Nagar Hissar Road           | 0.318           | 2349       |
| 58     | Ram Nagar Sunarian road           | 0.140           | 1167       |
| 59     | Rajeev Vihar Katcha Chamaria Road | 0.041           | 878        |
| 60     | Shora Kothi Mata Darwaja          | 0.047           | 897        |
| 61     | Shiv Nagar,Bhiwani road           | 0.132           | 1456       |
| 62     | Rajendra Colony , Bhiwani road    | 0.339           | 2378       |
| 63     | Basti Dhankan near babra          | 0.007           | 589        |
|        | Total                             | 10.07           | 158492     |



## The overall scenario (Slum wise)

| Slum wise details |   |            |                               |                   |            |                              |               |            |                              |               |            |  |
|-------------------|---|------------|-------------------------------|-------------------|------------|------------------------------|---------------|------------|------------------------------|---------------|------------|--|
| Sl.No             | Slum Name                                       | Population | Total number of houseHou olds | Proposed New Du's | Total cost | Proposed area of Road in Sqm | Rate per Unit | Total cost | Proposed New length of drain | Rate per unit | Total cost |  |
| 1                 | Ambedkar Nagar                                  | 2093       | 419                           | 41                | 123.00     | 4639.43                      | 791/-         | 36.70      | 2111.56                      | 700/-         | 14.78      |  |
| 2                 | Balmiki Basti/<br>Gohana Road<br>Krishna colony | 2342       | 468                           | 27                | 81.00      | 0                            | 0             | 0          | 0                            | 0             | 0          |  |
| 3                 | Barsi Nagar &<br>Nehru colony                   | 1987       | 397                           | 33                | 99.00      | 7157.19                      | 791/          | 56.61      | 3331.96                      | 700/-         | 23.32      |  |
| 4                 | Basti Kutana                                    | 1234       | 247                           | 24                | 72.00      | 3460.98                      | 791/          | 27.38      | 1584.70                      | 700/-         | 11.09      |  |
| 5                 | Chhoturam Colony                                | 1324       | 265                           | 12                | 36.00      | 0                            | 0             | 0          | 0                            | 0             | 0          |  |
| 6                 | Chunni Pura &<br>Chaman pura                    | 543        | 109                           | 13                | 39.00      | 0                            | 0             | 0          | 0                            | 0             | 0          |  |
| 7                 | Ekta<br>Colony/Ambedkar<br>colony               | 1492       | 298                           | 81                | 243.00     | 0                            | 0             | 0          | 0                            | 0             | 0          |  |
| 8                 | Fateh Puri                                      | 1678       | 336                           | 30                | 90.00      | 0                            | 0             | 0          | 0                            | 0             | 0          |  |
| 9                 | Gandhi Nagar-1                                  | 2098       | 420                           | 161               | 483.00     | 0                            | 0             | 0          | 0                            | 0             | 0          |  |
| 10                | Gandhi Nagar-2                                  | 2143       | 429                           | 54                | 162.00     | 0                            | 0             | 0          | 0                            | 0             | 0          |  |
| 11                | Geeta Colony &<br>Ram Nagar                     | 1287       | 257                           | 7                 | 21.00      | 0                            | 0             | 0          | 0                            | 0             | 0          |  |
| 12                | Hanuman Colony                                  | 4110       | 822                           | 12                | 36.00      | 0                            | 0             | 0          | 0                            | 0             | 0          |  |
| 13                | J.P.Colony                                      | 1234       | 247                           | 13                | 39.00      | 0                            | 0             | 0          | 0                            | 0             | 0          |  |
| 14                | Jatiji Mohalla                                  | 567        | 113                           | 19                | 57.00      | 0                            | 0             | 0          | 0                            | 0             | 0          |  |
| 15                | Kabeer Colony                                   | 678        | 136                           | 81                | 243.00     | 6484.84                      | 791/          | 51.30      | 3058.02                      | 700/-         | 21.41      |  |
| 16                | Kartar Pura                                     | 1234       | 247                           | 35                | 105.00     | 0                            | 0             | 0          | 0                            | 0             | 0          |  |

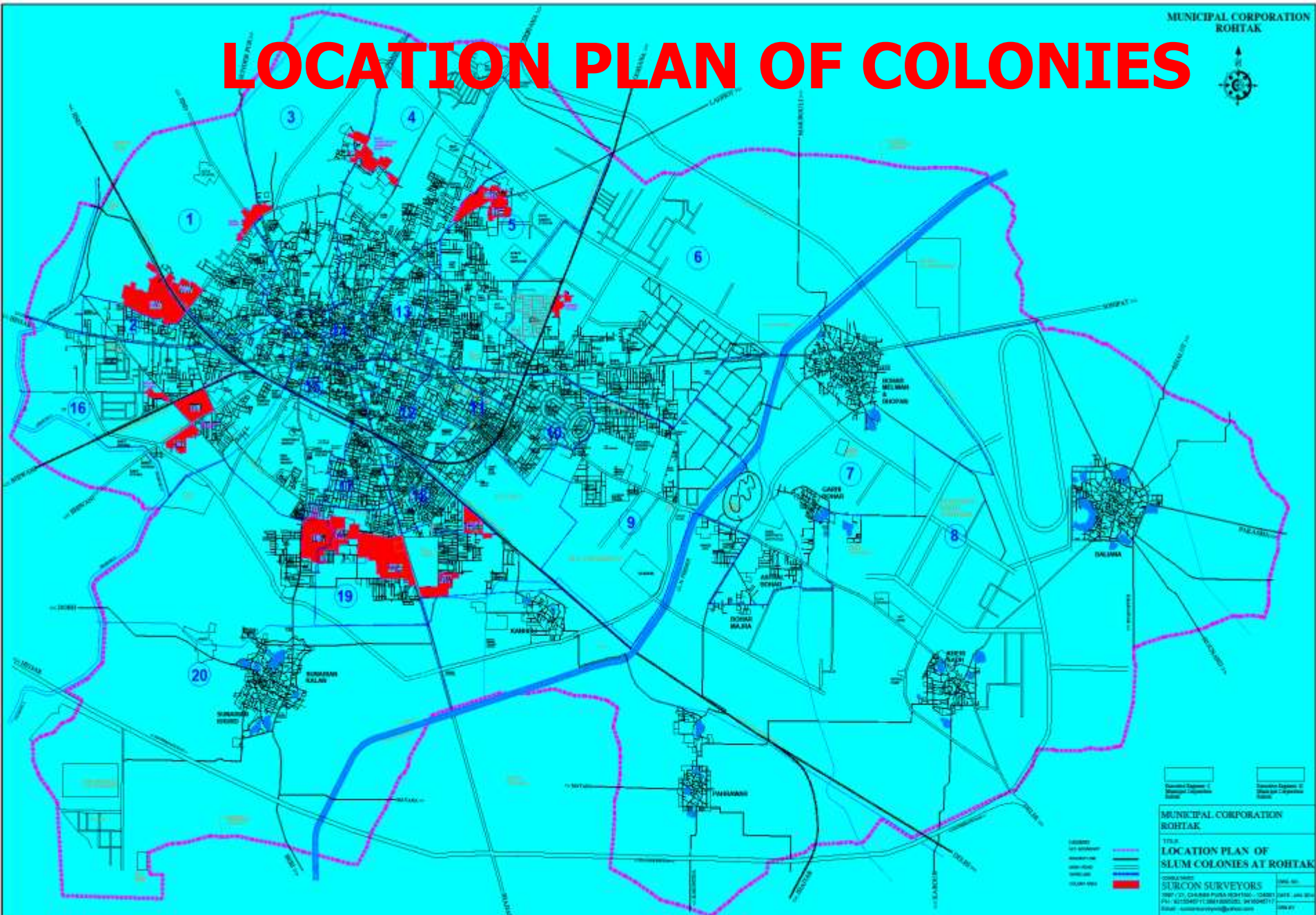
|    |                                  |      |     |     |        |          |       |        |          |       |       |
|----|----------------------------------|------|-----|-----|--------|----------|-------|--------|----------|-------|-------|
| 17 | Katchi Garhi                     | 2372 | 474 | 178 | 534.00 | 0        | 0     | 0      | 0        | 0     | 0     |
| 18 | New Janta Colony                 | 1134 | 227 | 4   | 12.00  | 0        | 0     | 0      | 0        | 0     | 0     |
| 19 | New Vijay Nagar                  | 3421 | 684 | 50  | 150.00 | 19912.46 | 791/- | 157.51 | 8325.90  | 700/- | 58.28 |
| 20 | Para Mohalla                     | 1567 | 313 | 42  | 126.00 | 0        | 0     | 0      | 0        | 0     | 0     |
| 21 | Preet Vihar                      | 2567 | 513 | 11  | 33.00  | 0        | 0     | 0      | 0        | 0     | 0     |
| 22 | Quila Mohalla                    | 1256 | 251 | 91  | 273.00 | 0        | 0     | 0      | 0        | 0     | 0     |
| 23 | Balmiki Basti<br>Ramleela ground | 1567 | 313 | 17  | 51.00  | 0        | 0     | 0      | 0        | 0     | 0     |
| 24 | Ravidass Nagar                   | 1786 | 357 | 17  | 51.00  | 0        | 0     | 0      | 0        | 0     | 0     |
| 25 | Saini Anand Pura                 | 1564 | 313 | 31  | 93.00  | 0        | 0     | 0      | 0        | 0     | 0     |
| 26 | Sainik Colony                    | 1256 | 251 | 18  | 54.00  | 0        | 0     | 0      | 0        | 0     | 0     |
| 27 | Salara Mohalla                   | 1978 | 396 | 102 | 306.00 | 0        | 0     | 0      | 0        | 0     | 0     |
| 28 | Sanichri Basti Ram<br>Nagar      | 1123 | 225 | 6   | 18.00  | 0        | 0     | 0      | 0        | 0     | 0     |
| 29 | Sanjay Colony & Indra<br>colony  | 867  | 173 | 107 | 321.00 | 0        | 0     | 0      | 0        | 0     | 0     |
| 30 | Sanjay Nagar                     | 2552 | 510 | 54  | 162.00 | 0        | 0     | 0      | 0        | 0     | 0     |
| 31 | Sheetal Nagar                    | 2591 | 518 | 19  | 57.00  | 26807.55 | 791/- | 212.05 | 14276.98 | 700/- | 99.94 |
| 32 | Sher Vihar                       | 2345 | 469 | 15  | 45.00  | 9186.59  | 791/- | 72.67  | 3944.92  | 700/- | 27.61 |
| 33 | Sri Nagar Colony                 | 1678 | 336 | 38  | 114.00 | 0        | 0     | 0      | 0        | 0     | 0     |
| 34 | Tek Nagar                        | 3920 | 784 | 42  | 126.00 | 0        | 0     | 0      | 0        | 0     | 0     |
| 35 | Tez Colony                       | 2824 | 565 | 107 | 321.00 | 0        | 0     | 0      | 0        | 0     | 0     |
| 36 | Amrit Colony                     | 568  | 114 | 38  | 114.00 | 26016.25 | 791/- | 205.79 | 11484.74 | 700/- | 80.39 |
| 37 | Rishi Nagar                      | 2458 | 492 | 29  | 87.00  | 0        | 0     | 0      | 0        | 0     | 0     |
| 38 | Basant Vihar Ladhot<br>Road      | 1234 | 247 | 56  | 168.00 | 6603.66  | 791/- | 52.23  | 4145.78  | 700/- | 29.02 |
| 39 | Uttam Vihar                      | 1456 | 291 | 7   | 21.00  | 0        | 0     | 0      | 0        | 0     | 0     |
| 40 | Shastri Nagar Ladhot<br>Road     | 1689 | 338 | 42  | 126.00 | 0        | 0     | 0      | 0        | 0     | 0     |

| Sl.No | Slum Name                         | Population | Total number of houseHouolds | Proposed New Du's | Total cost     | Proposed area of Road in Sqm | Rate per Unit | Total cost     | Proposed New length of drain | Rate per unit | Total cost    |
|-------|-----------------------------------|------------|------------------------------|-------------------|----------------|------------------------------|---------------|----------------|------------------------------|---------------|---------------|
| 41    | Shastri Nagar Hissar Road         | 1879       | 376                          | 25                | 75.00          | 16780.13                     | 791/          | 132.73         | 9091.28                      | 700/-         | 63.64         |
| 42    | Surya Nagar Hissar Road           | 1256       | 251                          | 46                | 138.00         | 22438.32                     | 791/          | 177.49         | 12482.64                     | 700/-         | 87.38         |
| 43    | Ram Nagar Sunarian road           | 2349       | 470                          | 57                | 171.00         |                              |               |                |                              |               |               |
| 44    | Surya Nagar Gohana road           | 1167       | 233                          | 10                | 30.00          | 0                            | 0             | 0              | 0                            | 0             | 0             |
| 45    | Rajeev Vihar Katcha Chamaria Road | 878        | 176                          | 21                | 63.00          | 16183.55                     | 791/          | 128.01         | 6865.16                      | 700/-         | 48.06         |
| 46    | Shora Kothi Mata Darwaja          | 897        | 179                          | 163               | 489.00         | 0                            | 0             | 0              | 0                            | 0             | 0             |
| 47    | Shiv Nagar,Bhiwani road           | 1456       | 291                          | 43                | 129.00         | 12731.08                     | 791/          | 100.70         | 4847.12                      | 700/-         | 33.93         |
| 48    | Rajendra Colony , Bhiwani road    | 2378       | 476                          | 84                | 252.00         | 0                            | 0             | 0              | 0                            | 0             | 0             |
| 49    | Basti Dhankan near babra          | 589        | 118                          | 67                | 201.00         | 0                            | 0             | 0              | 0                            | 0             | 0             |
| 50    | Anand Nagar                       | 1857       | 371                          | 0                 | 0.00           | 10493.55                     | 791/-         | 146.91         | 4324.58                      | 700/-         | 30.27         |
| 51    | Shiv Colony                       | 2347       | 469                          | 0                 | 0.00           | 8565.44                      | 791/          | 67.75          | 2826.22                      | 700/-         | 19.78         |
|       | <b>Total</b>                      | 88870      | 17774                        | <b>2280</b>       | <b>6840.00</b> | <b>197461.01</b>             |               | <b>1561.92</b> | <b>92701.56</b>              |               | <b>648.91</b> |

| Sl.No | Slum Name                  | Proposed area of road in Sqm | Rate per Sqm | Total Cost | Proposed Length of Drain in Mtr | Rate per metre | Total cost of Drain |
|-------|----------------------------|------------------------------|--------------|------------|---------------------------------|----------------|---------------------|
| 1     | Ambedkar Nagar             | 4639.43                      | 791/-        | 36.70      | 2111.56                         | Rs 700/-       | 14.78               |
| 2     | Anand Nagar                | 10493.55                     | 791/         | 83.00      | 4324.58                         | Rs 700/-       | 30.27               |
| 3     | Barsi Nagar & Nehru colony | 7157.19                      | 791/         | 56.61      | 3331.96                         | Rs 700/-       | 23.32               |
| 4     | Basti Kutana               | 3460.98                      | 791/         | 27.38      | 1584.70                         | Rs 700/-       | 11.09               |
| 5     | Kabeer Colony              | 6484.84                      | 791/         | 51.30      | 3058.02                         | Rs 700/-       | 21.41               |
| 6     | New Vijay Nagar            | 19912.46                     | 791/         | 157.51     | 8325.90                         | Rs 700/-       | 58.28               |
| 7     | Rajiv Vihar                | 16183.55                     | 791/         | 128.01     | 6865.16                         | Rs 700/-       | 48.06               |
| 8     | Sheetal Nagar              | 26807.55                     | 791/         | 212.05     | 14276.98                        | Rs 700/-       | 99.94               |
| 9     | Sher Vihar                 | 9186.59                      | 791/         | 72.67      | 3944.92                         | Rs 700/-       | 27.61               |
| 10    | Basant Vihar Ladhot Road   | 6603.66                      | 791/         | 52.23      | 4145.78                         | Rs 700/-       | 29.02               |
| 11    | Shiv Colony                | 8565.44                      | 791/         | 67.75      | 2826.22                         | Rs 700/-       | 19.78               |
| 12    | Shiv Nagar,Bhiwani road    | 12731.08                     | 791/         | 100.70     | 4847.12                         | Rs 700/-       | 33.93               |
| 13    | Shastri Nagar Hissar Road  | 16780.13                     | 791/         | 132.73     | 9091.28                         | Rs 700/-       | 63.64               |
| 14    | Amrit Colony               | 26016.25                     | 791/         | 205.79     | 11484.74                        | Rs 700/-       | 80.39               |
| 15    | Surya Nagar Hissar Road    | 22438.32                     | 791/         | 177.49     | 12482.64                        | Rs 700/-       | 87.38               |
|       | Total Cost                 | 197461.01                    |              | 1561.92    | 92701.56                        |                | 648.91              |



# LOCATION PLAN OF COLONIES

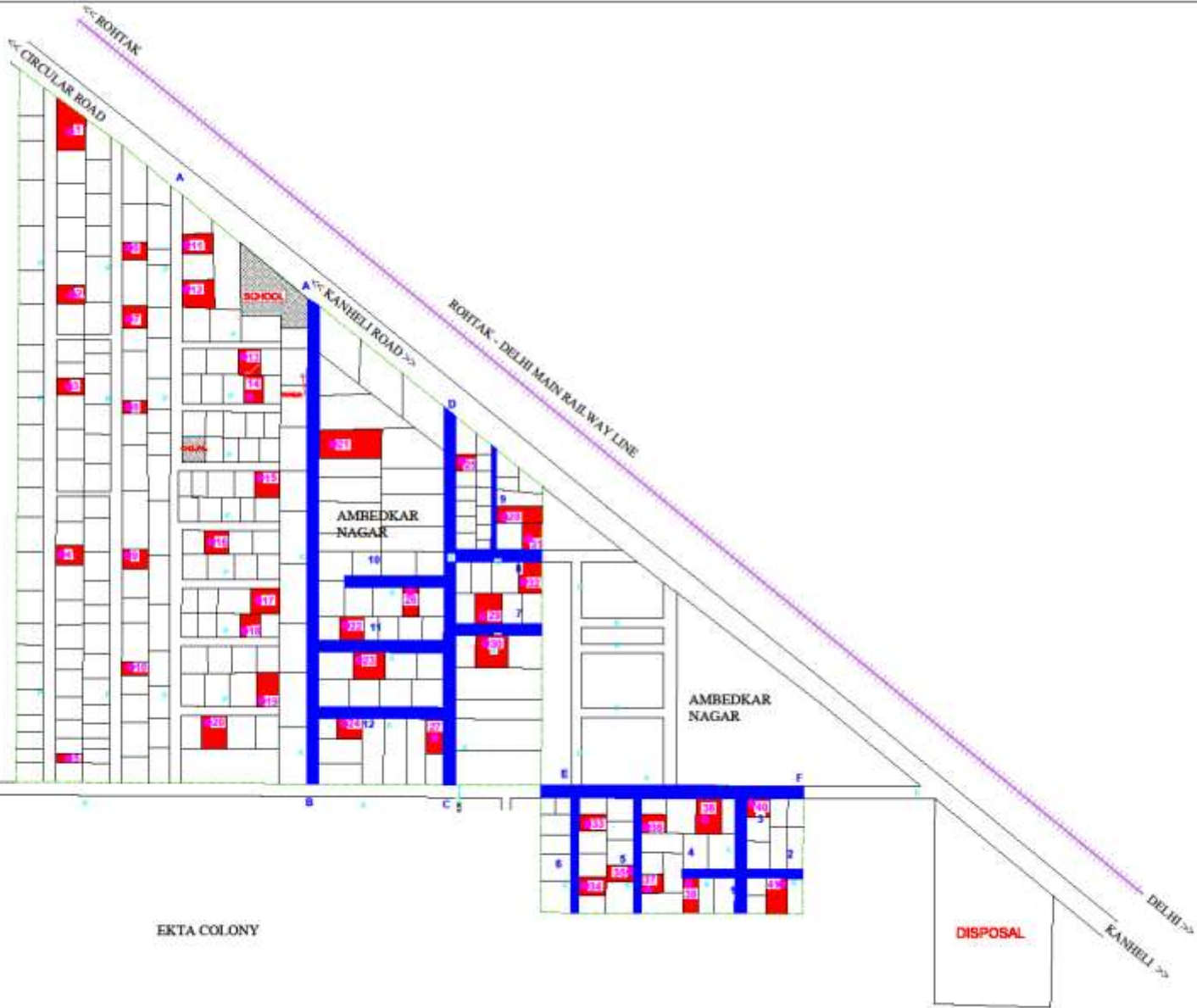


Municipal Corporation, Rohtak-Detailed Project Report

# LAYOUT PLAN OF AMBEDKAR NAGAR

2

AMBEDKAR NAGAR  
(WARD NO. 18)



STATEMENT OF STREETS

| S. No. | CHAR. | Length  | Width | Area in Sqm. |
|--------|-------|---------|-------|--------------|
| 1      | A-B   | 247.98  | 6.00  | 1487.88      |
| 2      | C-D   | 165.52  | 6.00  | 1115.96      |
| 3      | E-F   | 134.15  | 6.00  | 874.35       |
| 4      | 1     | 17.70   | 6.00  | 106.20       |
| 5      | 2     | 30.99   | 4.75  | 146.11       |
| 6      | 3     | 35.57   | 6.00  | 213.42       |
| 7      | 4     | 27.50   | 4.75  | 130.80       |
| 8      | 5     | 37.81   | 6.00  | 226.86       |
| 9      | 6     | 37.86   | 6.00  | 227.16       |
| 10     | 7     | 46.13   | 6.00  | 276.78       |
| 11     | 8     | 44.21   | 6.00  | 265.26       |
| 12     | 9     | 52.81   | 2.25  | 118.71       |
| 13     | 10    | 53.62   | 6.00  | 321.72       |
| 14     | 11    | 53.80   | 6.12  | 328.26       |
| 15     | 12    | 6.98    | 6.00  | 41.88        |
| TOTAL  |       | 1055.70 |       | 5808.36      |

- NOTES
- ALL DIMENSIONS ARE IN METERS
  - KATCHA GALI
  - BOUNDARY LINE
  - RAILWAY LINE
  - HOOP NO.
  - GALI NO.
  - PROCP. STREET
  - PROCP. LANE

LEGEND

- BOUNDARY LINE
- RAILWAY LINE
- HOOP NO.
- GALI NO.
- PROCP. STREET
- PROCP. LANE

PROJECT  
LAYOUT PLAN OF  
AMBEDKAR NAGAR  
AT ROHTAK, HARYANA.

DATE: 15/01/2019

EKTA COLONY

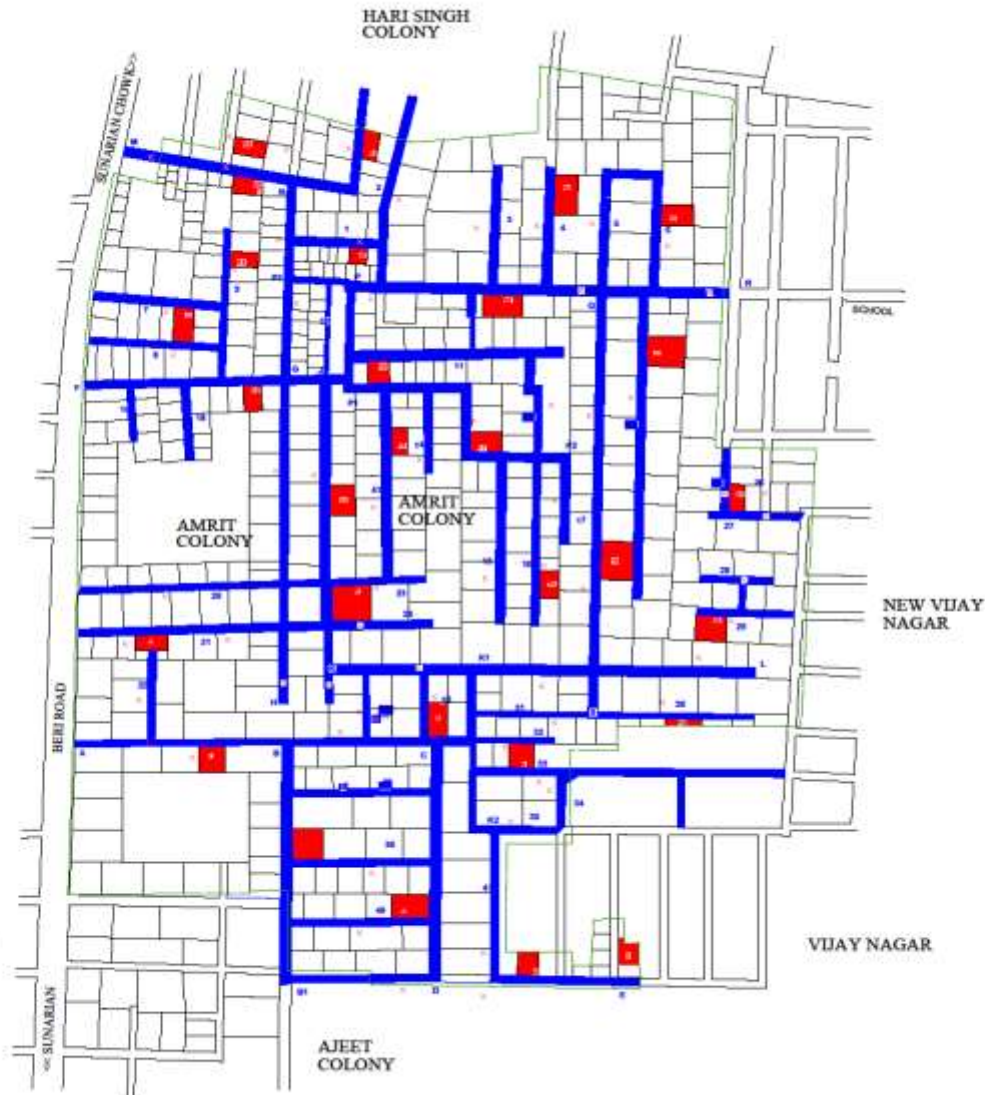
EKTA COLONY

DISPOSAL

DELHI

KANHALI

# LAYOUT PLAN OF AMRIT COLONY



**AMRIT COLONY**  
(WARD NO. 30)



**STATEMENT OF STREETS**

| S.No.        | Dist No.      | Length | Width | Area in Sq.m.   |
|--------------|---------------|--------|-------|-----------------|
| 1            | A-B           | 131.21 | 4.63  | 607.56          |
| 2            | S-C           | 87.40  | 5.63  | 491.86          |
| 3            | B-FH          | 198.20 | 7.20  | 1426.56         |
| 4            | C-D           | 156.69 | 7.20  | 1128.16         |
| 5            | E-G           | 87.30  | 5.38  | 467.86          |
| 6            | D-E           | 133.84 | 5.48  | 731.60          |
| 7            | F-G           | 123.84 | 5.72  | 708.54          |
| 8            | D-H           | 180.70 | 5.34  | 966.78          |
| 9            | G-H           | 217.88 | 5.58  | 1215.78         |
| 10           | G-I           | 15.80  | 5.14  | 81.22           |
| 11           | J-P           | 217.81 | 6.87  | 1486.35         |
| 12           | K-L           | 287.93 | 7.28  | 2096.03         |
| 13           | H-I-K         | 198.27 | 4.23  | 838.96          |
| 14           | M-N           | 183.86 | 6.76  | 1242.70         |
| 15           | M-P           | 26.88  | 4.21  | 113.18          |
| 16           | P-Q           | 180.72 | 7.11  | 1284.56         |
| 17           | Q-L           | 285.40 | 6.87  | 1960.56         |
| 18           | Q-R           | 77.88  | 7.18  | 557.18          |
| 19           | R             | 22.48  | 6.20  | 139.18          |
| 20           | S             | 97.91  | 6.82  | 667.72          |
| 21           | T             | 81.03  | 5.82  | 471.54          |
| 22           | U             | 88.86  | 5.82  | 517.14          |
| 23           | V             | 79.09  | 5.82  | 459.30          |
| 24           | W             | 87.47  | 6.87  | 599.02          |
| 25           | X             | 81.02  | 6.88  | 555.24          |
| 26           | Y             | 82.31  | 4.87  | 400.82          |
| 27           | Z             | 181.21 | 4.87  | 881.50          |
| 28           | AA            | 81.54  | 3.72  | 303.32          |
| 29           | AB            | 133.87 | 6.78  | 905.86          |
| 30           | AC            | 84.04  | 5.14  | 432.36          |
| 31           | AD            | 380.81 | 5.87  | 2235.28         |
| 32           | AE            | 88.30  | 3.27  | 288.84          |
| 33           | AF            | 110.81 | 6.21  | 688.19          |
| 34           | AG            | 111.53 | 5.19  | 578.85          |
| 35           | AH            | 74.34  | 6.27  | 464.11          |
| 36           | AI            | 36.23  | 4.88  | 176.78          |
| 37           | AJ            | 88.81  | 3.28  | 291.28          |
| 38           | AK            | 125.20 | 4.71  | 589.40          |
| 39           | AL            | 127.33 | 5.32  | 676.15          |
| 40           | AM            | 68.01  | 5.09  | 346.31          |
| 41           | AN            | 88.81  | 4.71  | 418.28          |
| 42           | AO            | 83.88  | 4.14  | 347.28          |
| 43           | AP            | 43.12  | 5.88  | 253.54          |
| 44           | AQ            | 43.02  | 5.88  | 252.84          |
| 45           | AR            | 88.28  | 5.48  | 483.58          |
| 46           | AS            | 84.11  | 4.88  | 408.58          |
| 47           | AT            | 42.12  | 4.88  | 205.58          |
| 48           | AU            | 98.67  | 3.82  | 376.92          |
| 49           | AV            | 71.08  | 3.87  | 273.12          |
| 50           | AW            | 89.29  | 3.88  | 343.24          |
| 51           | AX            | 78.58  | 5.28  | 414.90          |
| 52           | AY            | 34.42  | 5.28  | 181.68          |
| 53           | AZ            | 36.08  | 5.28  | 189.68          |
| 54           | BA            | 42.38  | 5.28  | 223.68          |
| 55           | BB            | 42.37  | 3.78  | 160.18          |
| 56           | BC            | 87.42  | 5.27  | 460.70          |
| 57           | BD            | 87.42  | 5.27  | 460.70          |
| 58           | BE            | 87.42  | 5.27  | 460.70          |
| 59           | BF            | 128.82 | 6.82  | 878.62          |
| <b>Total</b> | <b>240.31</b> |        |       | <b>30867.89</b> |

**NOTES**  
ALL DIMENSIONS ARE IN METERS  
ROAD / STREET  
BOUNDARY LINE  
TEMPLE  
KATCHA WALL  
PROPOSED WALL  
PROP. UNIT

**SCALE**  
1:1000

**LAY OUT PLAN OF AMRIT COLONY**  
MHTM, HARYANA.

**SURCON SURVEYORS**  
SURVEY & CIVIL ENGINEERING  
PLOT 10, GATEWAY ROAD, MHTM CAMPUS  
PH. NO. 9810477108, 9810477109  
E-MAIL: surconsurveyors@gmail.com

DATE: 08/01/2024  
SCALE: 1:1000  
PAGE: 1/001

# LAYOUT PLAN OF BARSİ NAGAR



**BARSİ NAGAR**  
(WARD NO. 1)



| S. No.       | Dist. No. | Length         | Width | Area in Sqm.   |
|--------------|-----------|----------------|-------|----------------|
| 1            | A-B       | 27.31          | 3.76  | 102.61         |
| 2            | B-C       | 48.40          | 3.80  | 183.92         |
| 3            | C-E       | 121.89         | 3.80  | 463.20         |
| 4            | D-D1      | 83.87          | 4.70  | 394.29         |
| 5            | D1-G2     | 124.4          | 4.50  | 561.80         |
| 6            | D1-G3     | 21.83          | 3.30  | 72.12          |
| 7            | B-F       | 92.36          | 4.10  | 378.69         |
| 8            | B-F       | 172.38         | 3.20  | 553.62         |
| 9            | F-D       | 11.79          | 3.70  | 43.62          |
| 10           | D-G1      | 85.9           | 3.87  | 331.87         |
| 11           | F-H       | 185.44         | 3.50  | 655.04         |
| 12           | J-K       | 25.02          | 3.80  | 95.17          |
| 13           | K-L       | 34.71          | 3.80  | 131.90         |
| 14           | K-M       | 124.75         | 3.20  | 399.20         |
| 15           | M-N       | 111.77         | 4.10  | 458.30         |
| 16           | L-L1      | 27.88          | 4.00  | 111.52         |
| 17           | L-L2      | 42.31          | 3.80  | 160.78         |
| 18           | L-L3      | 37.82          | 3.80  | 143.72         |
| 19           | M-P       | 89.1           | 3.30  | 294.23         |
| 20           | M-Q       | 79.17          | 3.30  | 261.26         |
| 21           | I         | 41.28          | 4.00  | 165.12         |
| 22           | I         | 25.42          | 4.00  | 101.68         |
| 23           | I         | 75.44          | 3.80  | 286.67         |
| 24           | I         | 34.35          | 3.80  | 130.53         |
| 25           | I         | 36.07          | 3.80  | 137.06         |
| <b>Total</b> |           | <b>1962.86</b> |       | <b>7186.27</b> |

**NOTES**  
ALL DIMENSIONS ARE IN METRES

- KATEWA (DW) [Symbol]
- BOUNDARY LINE [Symbol]
- RAILWAY LINE [Symbol]
- ROAD NO. [Symbol]
- DRAINAGE [Symbol]
- PROJ. STREET [Symbol]
- PROJ. PLANT [Symbol]

CLIENT  
COMMISSIONER  
MUNICIPAL CORPORATION  
ROHTAK

PROJECT  
**LAY OUT PLAN OF  
BARSİ NAGAR  
AT ROHTAK, HARYANA.**

CONSULTANTS  
**SURCON SURVEYORS**  
SURVEY & CIVIL ENGINEERING  
1857/21, CHARAN PURA, ROHTAK-124001  
PH : 821948717, 9918085262, 9418046717  
PH : REG. | 01262 - 246717  
Email : [surconsurveyors@gmail.com](mailto:surconsurveyors@gmail.com)

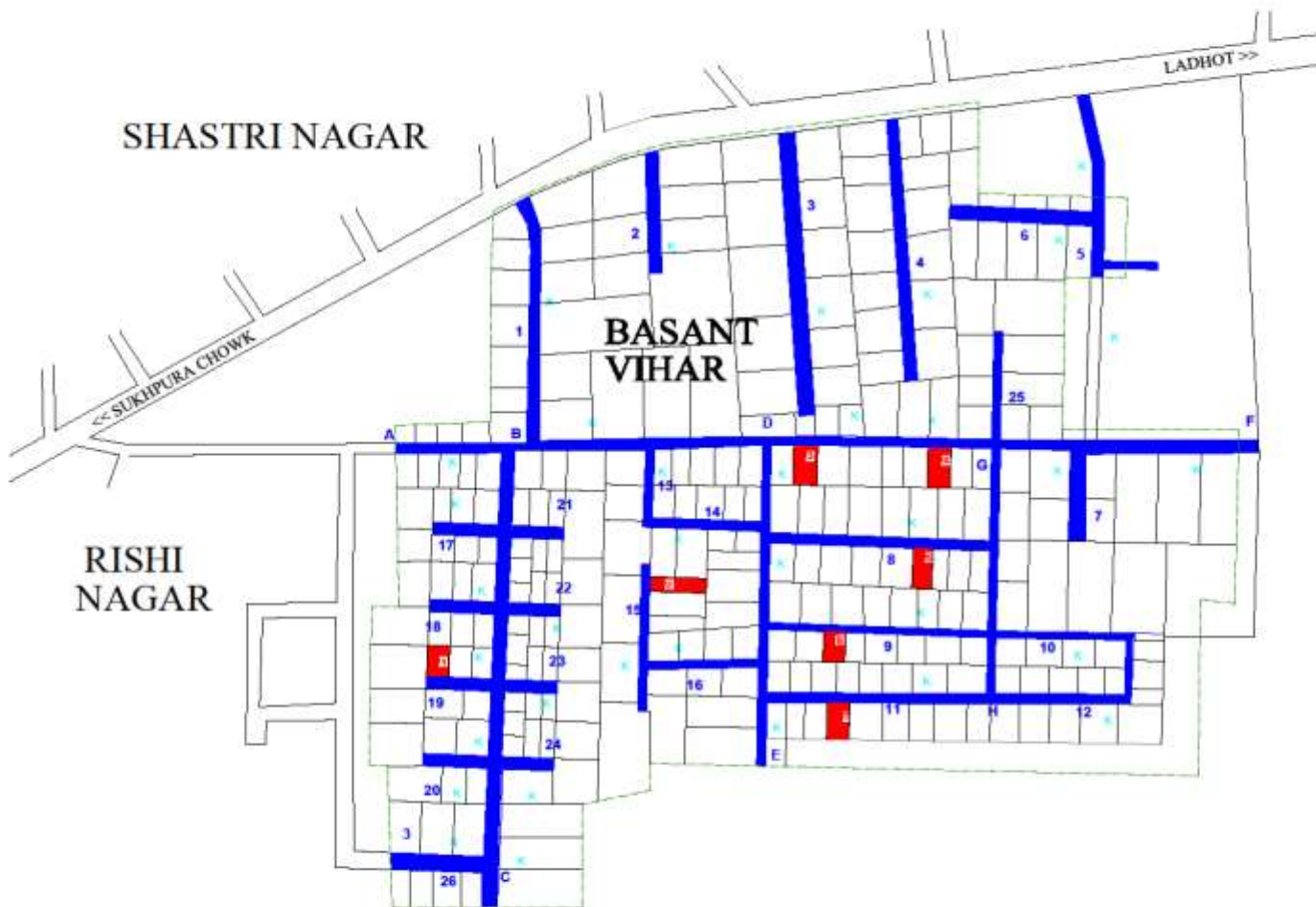
DRAWN BY  
DATE 08/03/15  
SCALE 1 : 1000  
SHEET 01/01




# LAYOUT PLAN OF BASANT VIHAR


51


**BASANT VIHAR**  
(WARD NO. 5)



**NOTES**  
ALL DIMENSIONS ARE IN METERS  
KATCHA GALI

BOUNDARY LINE 

PROPOSED ROAD 

PROPOSED UNIT 

CLIENT  
COMMISSIONER  
MEDICAL CORPORATION  
ROHTAK

PROJECT  
**LAY OUT PLAN OF  
BASANT VIHAR**  
LADHOT ROAD AT ROHTAK, HARYANA.

CONSULTANTS  
**SURCON SURVEYORS**  
SURVEY & CIVIL ENGINEERING  
15/17-21, CHANDI PURA, ROHTAK-124001  
PH : 9215548017, 9881806282, 9418046712  
PH : RES. J - 01262 - 242717  
Email : surconsurveyors@gmail.com

DATE: 08/02/2011  
SCALE: 1 : 1000  
PAGE: 01 / 06

RISHI  
NAGAR

SHASTRI NAGAR

LADHOT >>

**BASANT  
VIHAR**

<< SUKHIPURA CHOWK

A

B

D

F

C

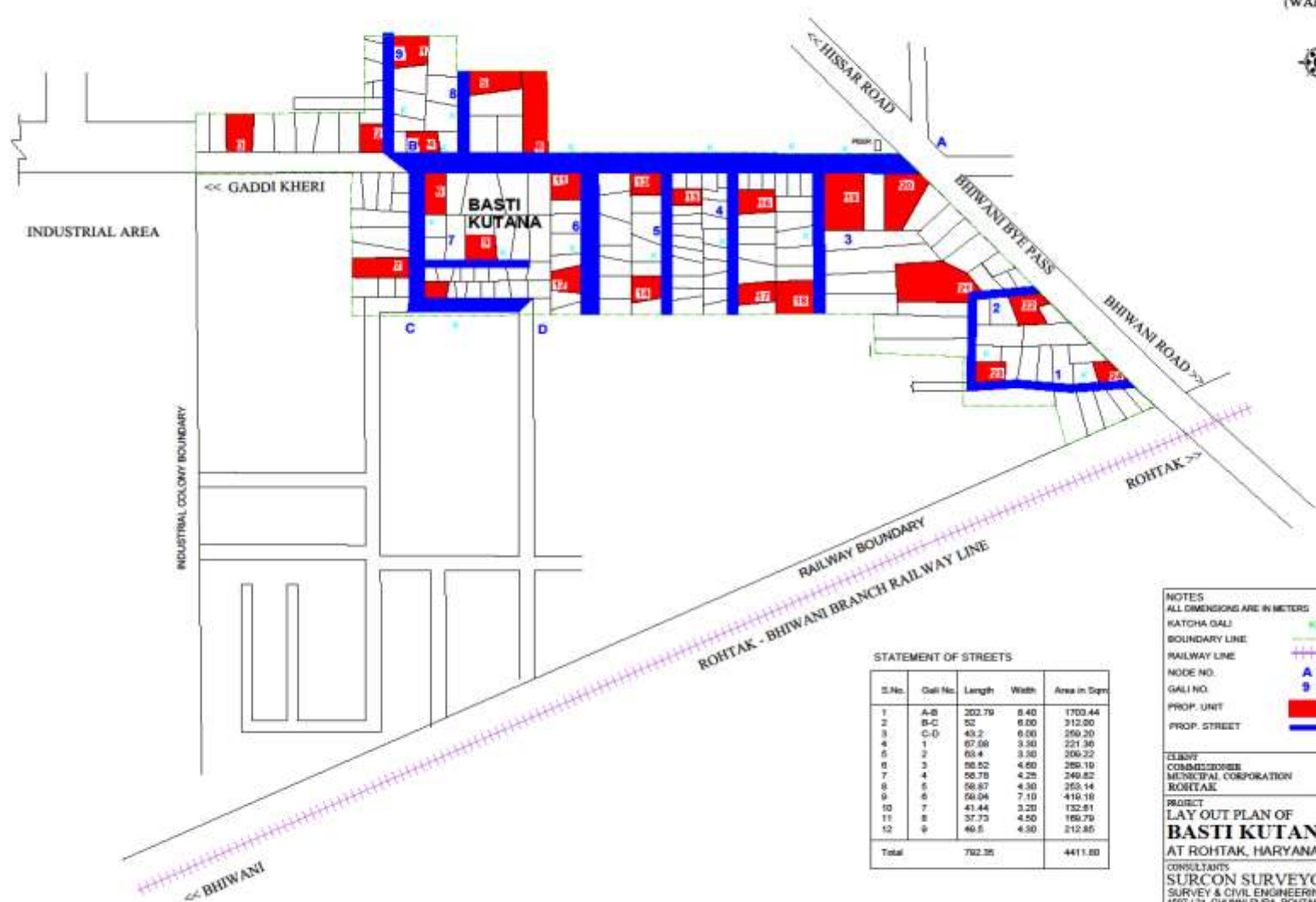
E

H

G

# LAYOUT PLAN OF BASTI KUTANA

BASTI KUTANA  
(WARD NO. 16)



STATEMENT OF STREETS

| S.No. | Gali No. | Length | Width | Area in Sqm |
|-------|----------|--------|-------|-------------|
| 1     | A-B      | 202.79 | 6.40  | 1703.44     |
| 2     | B-C      | 52     | 6.00  | 312.00      |
| 3     | C-D      | 43.2   | 6.00  | 259.20      |
| 4     | 1        | 67.86  | 3.30  | 224.36      |
| 5     | 2        | 66.4   | 3.30  | 219.22      |
| 6     | 3        | 58.52  | 4.20  | 245.80      |
| 7     | 4        | 58.78  | 4.20  | 246.82      |
| 8     | 5        | 58.87  | 4.30  | 253.14      |
| 9     | 6        | 58.94  | 7.10  | 418.18      |
| 10    | 7        | 41.44  | 3.20  | 132.61      |
| 11    | 8        | 37.73  | 4.50  | 169.79      |
| 12    | 9        | 40.5   | 4.30  | 172.85      |
| Total |          | 762.35 |       | 4411.80     |

NOTES  
ALL DIMENSIONS ARE IN METERS

KATCHA GALI:

BOUNDARY LINE:

RAILWAY LINE:

MODE NO.:

GALI NO.:

PROP. UNIT:

PROP. STREET:

---

CLIENT  
COMMERCIAL  
MUNICIPAL CORPORATION  
ROHTAK

---

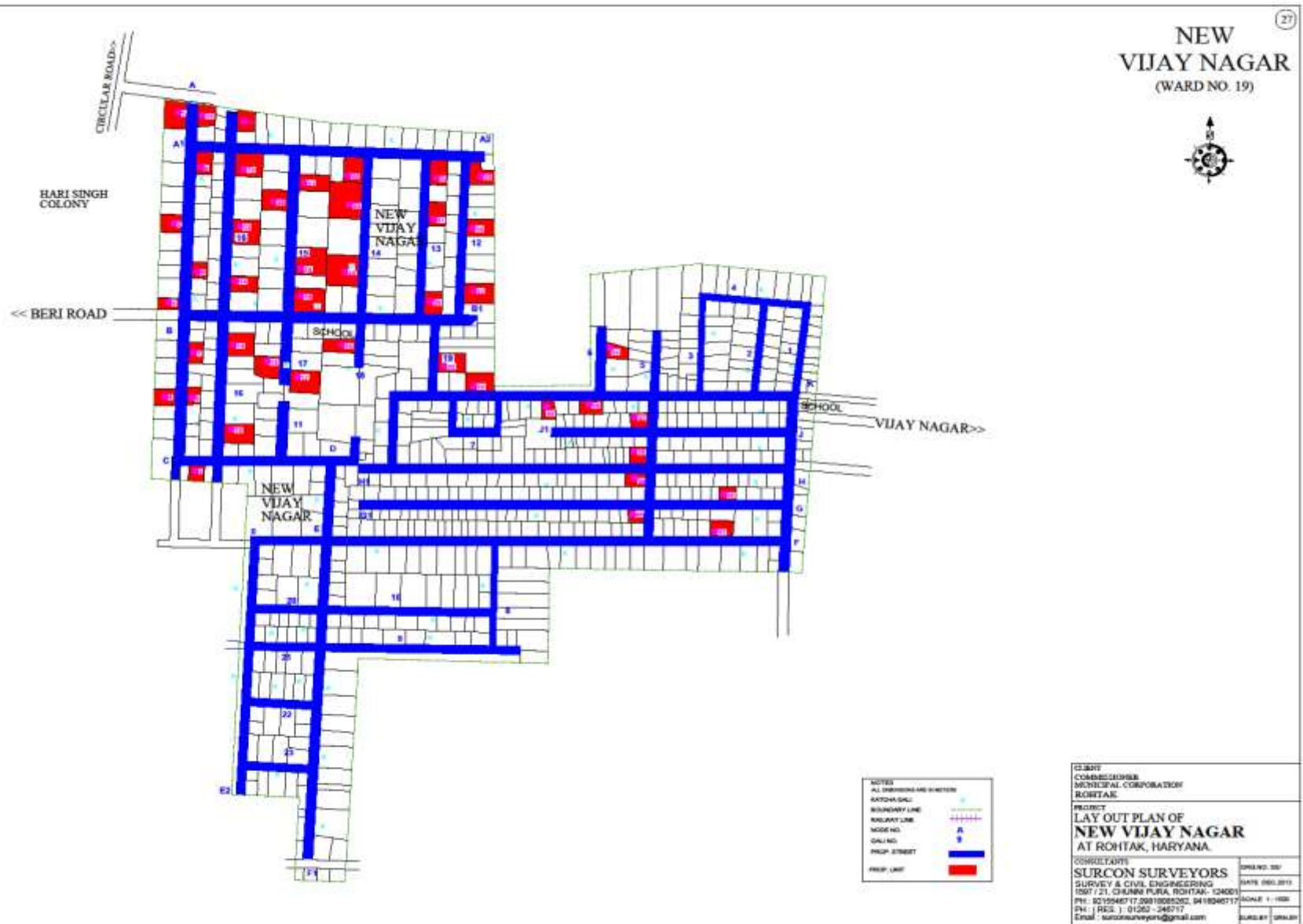
PROJECT  
LAYOUT PLAN OF  
**BASTI KUTANA**  
AT ROHTAK, HARYANA.

---

CONSULTANTS  
**SURCON SURVEYORS**  
SURVEY & CIVIL ENGINEERING  
1567/21, CHALANI PURA, ROHTAK-134001  
PH: 0210948717, 00618095262, 9416046717  
FN: (REG.) 01382-246717  
Email: surconsurveyors@gmail.com

DRG. NO. 502  
DATE: DEC. 2013  
SCALE: 1:1500  
JURED BY: DR. J. N.

# LAYOUT PLAN OF NEW VIJAY NAGAR



NEW VIJAY NAGAR  
(WARD NO. 19)



CLIENT  
COMMISSIONER  
MUNICIPAL CORPORATION  
ROHTAK

PROJECT  
LAY OUT PLAN OF  
NEW VIJAY NAGAR  
AT ROHTAK, HARYANA.

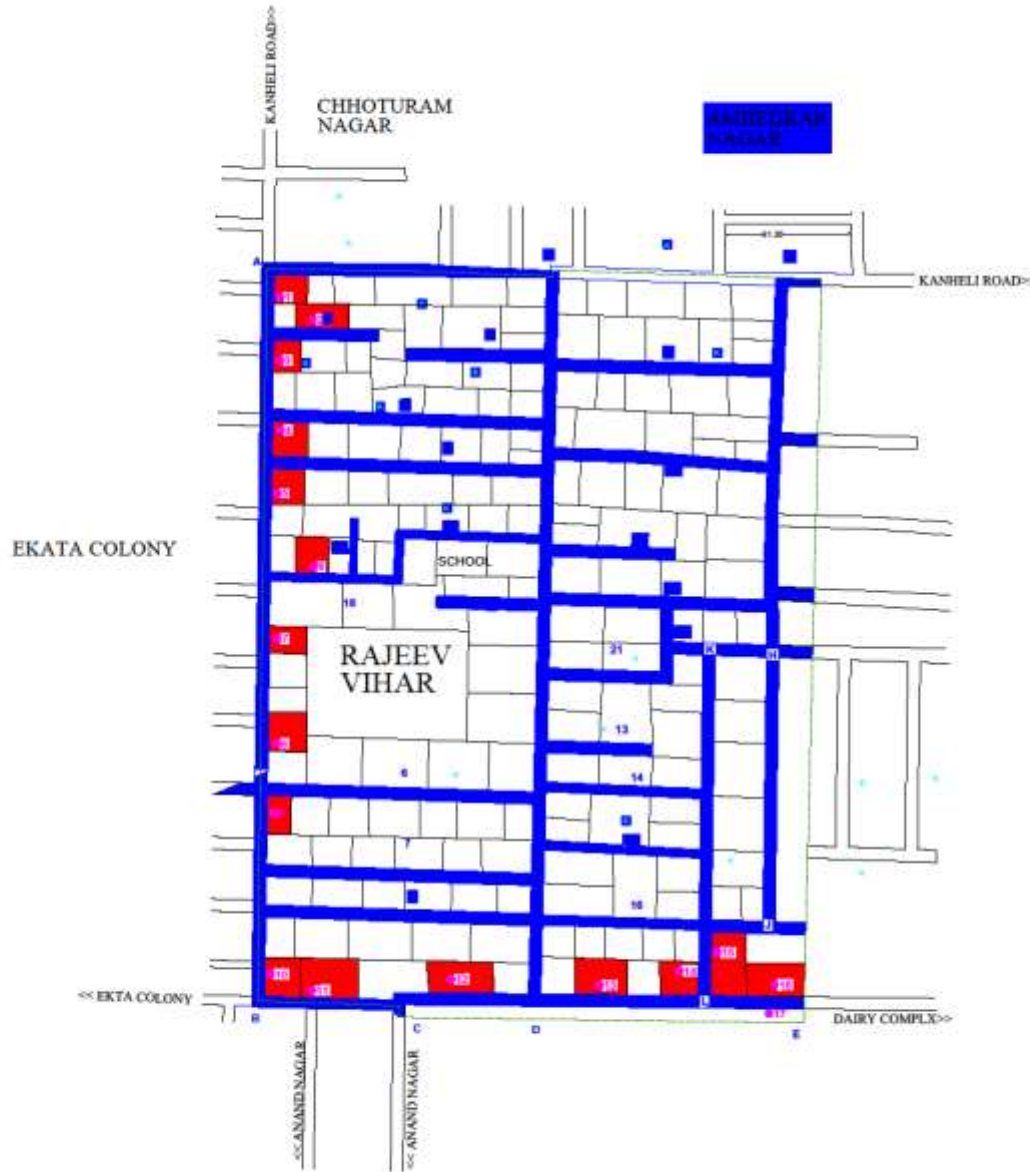
CONSULTANTS  
SURCON SURVEYORS  
SURVEY & CIVIL ENGINEERING  
1587/21, CHAURRI PURA, ROHTAK-124001  
PH : 821948717, 99110085262, 9418046717  
PH : REG. | 01262 - 246717  
Email : surconsurveyors@gmail.com

DWG. NO. 001  
DATE: 09.03.2015  
SCALE: 1 : 1000  
SHEET: 01/01

# LAYOUT PLAN OF RAJIV VIHAR

## RAJIV VIHAR

(WARD NO. 19)



- NOTES**  
 ALL DIMENSIONS ARE IN METERS
- KATCHA GALI
  - BOUNDARY LINE
  - PROPOSED GALI
  - PROP. UNIT

CLIENT  
 COMMISSIONER  
 MUNICIPAL CORPORATION  
 ROHTAK

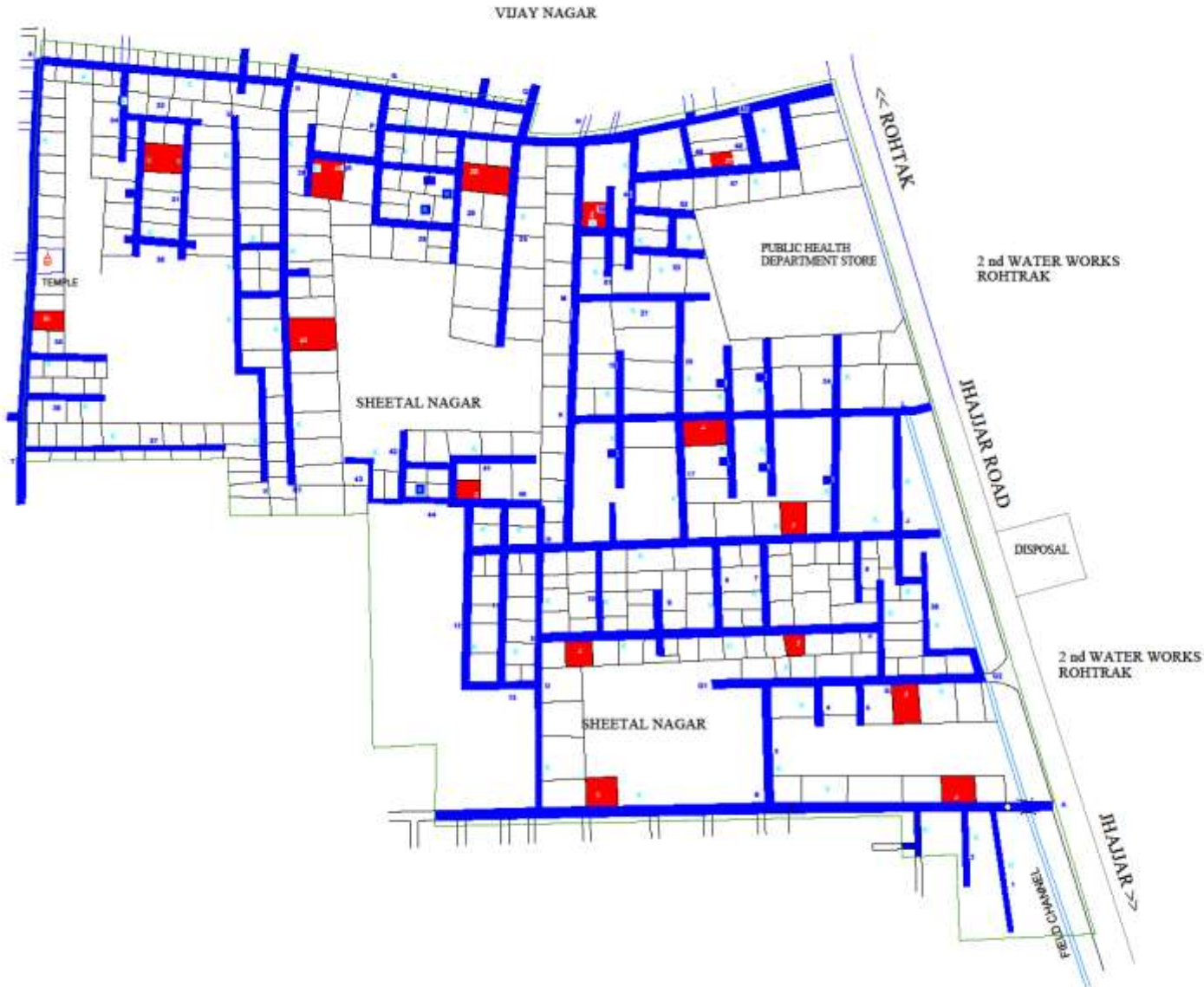
PROJECT  
 LAY OUT PLAN OF  
**RAJIV VIHAR**  
 AT ROHTAK, HARYANA.

CONSULTANTS  
**SURCON SURVEYORS**  
 SURVEY & CIVIL ENGINEERING  
 1507 / 21, CHILNA PURA, ROHTAK - 134001  
 PH : 921546717, 9811806320, 9418046717  
 FAX : (RES.) : 01262 - 246717  
 Email : [surconsurveyors@gmail.com](mailto:surconsurveyors@gmail.com)

DRAWN BY: [ ]  
 DATE: 06C/2011  
 SCALE: 1 : 2000  
 MADE BY: [ ]

# LAYOUT PLAN OF SHEETAL NAGAR

**SHEETAL NAGAR**  
(WARD NO 19)



NOTES

ALL DIMENSIONS ARE IN METERS

|               |   |
|---------------|---|
| WATER SUPPLY  | — |
| SEWERAGE LINE | — |
| WALL NO.      | A |
| WALL NO.      | B |
| PROP. STREET  | — |
| PROP. LOT     | — |

CLIENT  
COMMISSIONER  
MUNICIPAL CORPORATION  
ROHTAK

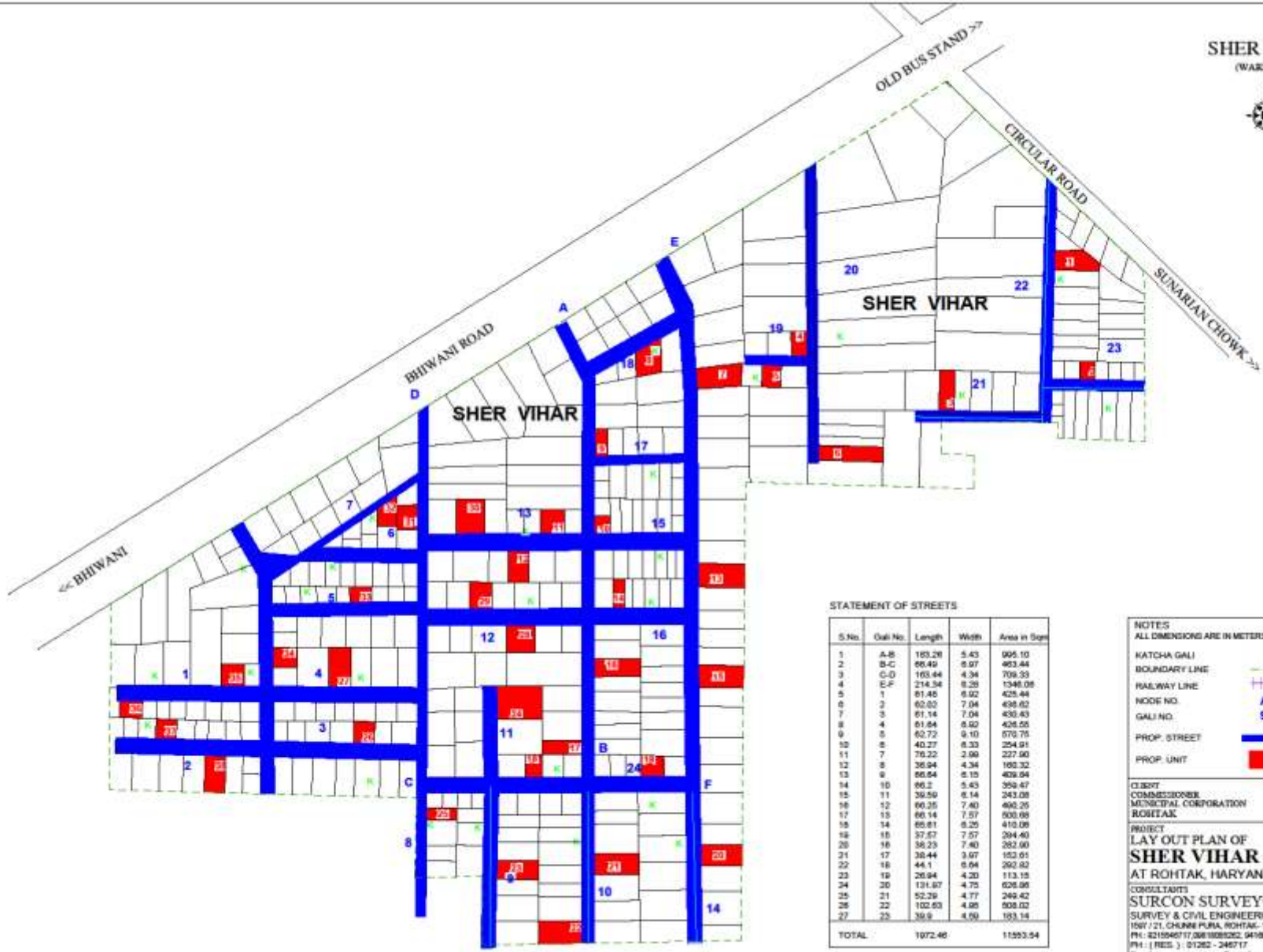
PROJECT  
LAY OUT PLAN OF  
**SHEETAL NAGAR**  
AT ROHTAK, HARYANA.

CONSULTANTS  
**SURCON SURVEYORS**  
SURVEY & CIVIL ENGINEERING  
1507 / 21, CHILNA PURA, ROHTAK - 134001  
PH : 021546717, 0818065262, 0418046717  
PH : RES : 01262 - 246717  
Email : [surconsurveyors@gmail.com](mailto:surconsurveyors@gmail.com)

|             |          |
|-------------|----------|
| DRAWING NO. | 001      |
| DATE        | 06C-2011 |
| SCALE       | 1 : 2000 |
| DRAWN BY    | DR/PH    |

# LAYOUT PLAN OF SHER VIHAR

SHER VIHAR  
(WARD NO.16)



STATEMENT OF STREETS

| S.No. | Call No. | Length  | Width | Area in Sqm |
|-------|----------|---------|-------|-------------|
| 1     | A-B      | 183.28  | 5.43  | 995.10      |
| 2     | B-C      | 86.42   | 6.97  | 593.44      |
| 3     | C-D      | 103.44  | 4.34  | 449.33      |
| 4     | E-F      | 214.34  | 6.28  | 1346.05     |
| 5     | 1        | 81.40   | 6.02  | 489.44      |
| 6     | 2        | 62.02   | 7.04  | 436.62      |
| 7     | 3        | 81.14   | 7.04  | 571.43      |
| 8     | 4        | 81.84   | 6.92  | 566.55      |
| 9     | 5        | 62.72   | 9.10  | 570.75      |
| 10    | 6        | 40.27   | 6.33  | 254.91      |
| 11    | 7        | 75.22   | 3.96  | 297.50      |
| 12    | 8        | 36.94   | 4.34  | 160.32      |
| 13    | 9        | 86.84   | 6.15  | 534.26      |
| 14    | 10       | 66.2    | 5.43  | 359.47      |
| 15    | 11       | 36.50   | 6.14  | 223.91      |
| 16    | 12       | 66.25   | 7.40  | 490.25      |
| 17    | 13       | 66.14   | 7.57  | 500.69      |
| 18    | 14       | 66.87   | 6.25  | 418.05      |
| 19    | 15       | 37.57   | 7.57  | 284.40      |
| 20    | 16       | 36.25   | 7.40  | 268.00      |
| 21    | 17       | 36.44   | 3.97  | 144.61      |
| 22    | 18       | 44.1    | 6.94  | 306.02      |
| 23    | 19       | 26.94   | 4.20  | 113.15      |
| 24    | 20       | 131.97  | 4.75  | 628.88      |
| 25    | 21       | 52.29   | 4.77  | 249.42      |
| 26    | 22       | 102.63  | 4.86  | 498.02      |
| 27    | 23       | 36.9    | 4.60  | 169.14      |
| TOTAL |          | 1072.46 |       | 11993.54    |

**NOTES**  
ALL DIMENSIONS ARE IN METERS

HATCHA GALI

BOUNDARY LINE

RAILWAY LINE

HOPE NO.

GALI NO.

PROP. STREET

PROP. UNIT

CLIENT  
COMMISSIONER  
MUNICIPAL CORPORATION  
ROHTAK

PROJECT  
**LAY OUT PLAN OF  
SHER VIHAR  
AT ROHTAK, HARYANA.**

CONSULTANTS  
**SURCON SURVEYORS**

SURVEY & CIVIL ENGINEERING  
15/11/21, CHUNNI PURA, ROHTAK-124001  
PH: 8215848717, 0861808282, 941048717  
PH: ( RES. ) : 01282 - 246717  
Email : [surconsurveyors@gmail.com](mailto:surconsurveyors@gmail.com)

DATE: 08/02/2019  
SCALE: 1:100  
SHEET:

# LAYOUT PLAN OF SHIV COLONY

55

## SHIV COLONY

(WARD NO 1)



### STATEMENT OF STREETS

| S. No.       | Gali No. | Length         | Width | Area in Sqm     |
|--------------|----------|----------------|-------|-----------------|
| 1            | A-B      | 41.57          | 5.95  | 209.20          |
| 2            | B-C      | 131.35         | 8.85  | 1177.49         |
| 3            | B-C      | 95.51          | 10.13 | 970.36          |
| 4            | D-D1     | 156.22         | 6.08  | 949.82          |
| 5            | E-F      | 216.09         | 10.21 | 2205.97         |
| 6            | F-G      | 202.49         | 4.77  | 970.65          |
| 7            | G-H      | 43.79          | 7.02  | 307.41          |
| 8            | H-J      | 92.27          | 5.99  | 554.99          |
| 9            | D1-F     | 95.95          | 5.90  | 567.00          |
| 10           | 1        | 62.23          | 10.14 | 641.15          |
| 11           | 2        | 47.80          | 8.98  | 430.57          |
| 12           | 3        | 39.76          | 8.98  | 357.02          |
| 13           | 4        | 38.91          | 5.51  | 214.39          |
| 14           | 5        | 40.11          | 6.01  | 241.06          |
| 15           | 6        | 35.52          | 6.00  | 213.32          |
| 16           | 7        | 47.01          | 5.87  | 275.95          |
| 17           | 8        | 85.09          | 5.01  | 426.10          |
| <b>TOTAL</b> |          | <b>1413.11</b> |       | <b>10281.17</b> |

### NOTES

ALL DIMENSIONS ARE IN METERS

- PROPOSED GALI
- KATCHA GALI
- BOUNDARY LINE
- TEMPLE
- PROPOSED UNIT

CLIENT  
COMMERCIAL  
MUNICIPAL CORPORATION  
ROHTAK

PROJECT  
LAY OUT PLAN OF  
SHIV COLONY  
AT ROHTAK, HARYANA.

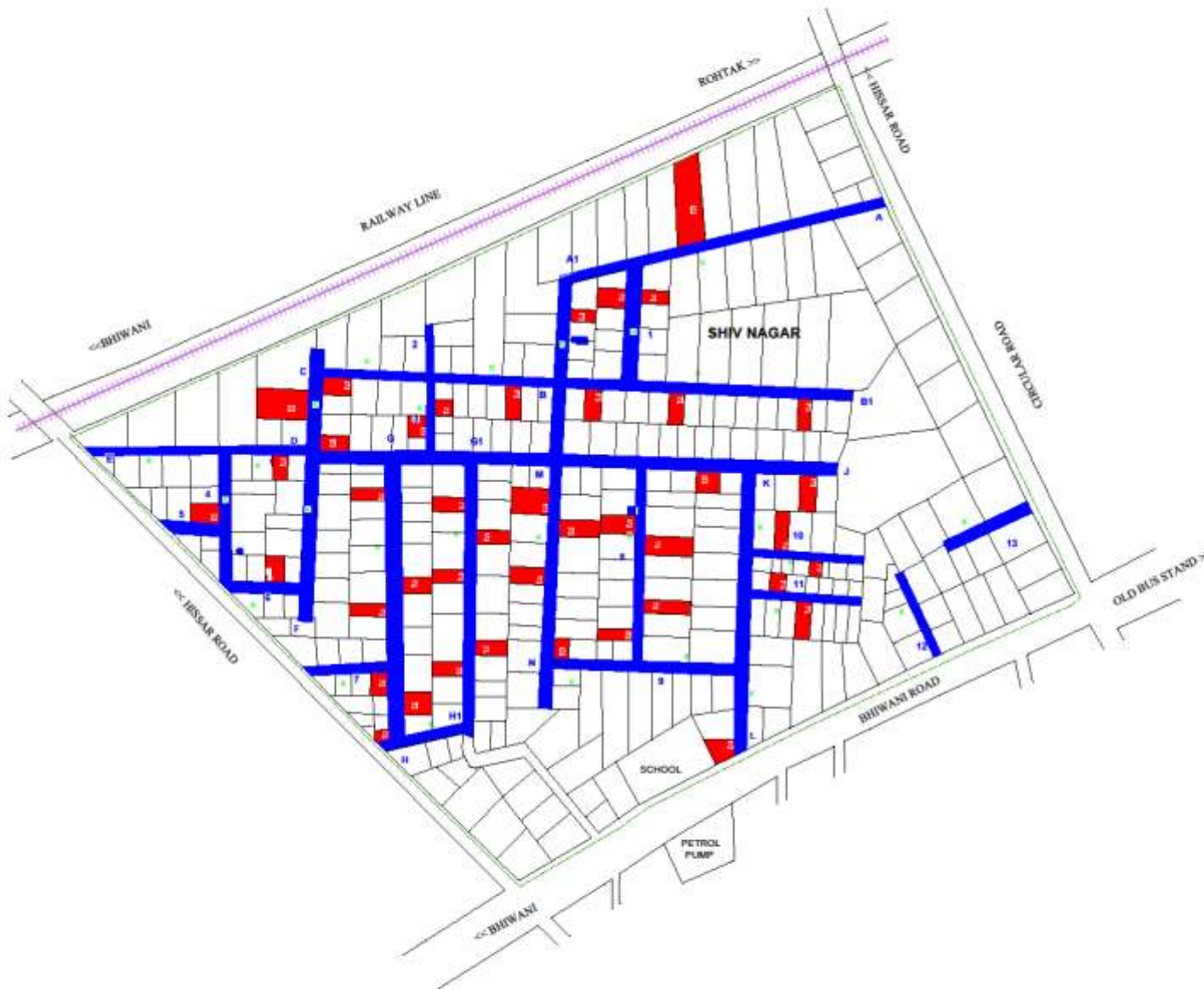
CONSULTANTS  
SURCON SURVEYORS  
SURVEY & CIVIL ENGINEERING  
1507 / 21, CHILNA PURA, ROHTAK - 140011  
PH : 01546717288/1806320, 9418046717  
PH : (RES.) : 01522 - 246717  
Email : surconsurveyors@gmail.com

DRAWING NO.  
DATE (DD/MM/YY)  
SCALE 1 : 500  
DRAWN BY

# LAYOUT PLAN OF SHIV NAGAR

61

SHIV NAGAR  
(WARD NO.16)



NOTES  
ALL DIMENSIONS ARE IN METERS

|               |       |
|---------------|-------|
| KATCHA GALI   | ---   |
| BOUNDARY LINE | ----- |
| RAILWAY LINE  | +++++ |
| NODE NO.      | A     |
| GALI NO.      | 9     |
| PROP. UNIT    | ■     |
| PROP. STREET  | ■     |

CLIENT  
COMMISSIONER  
MUNICIPAL CORPORATION  
ROHTAK

PROJECT  
**LAY OUT PLAN OF  
SHIV NAGAR**  
AT BHIWANI ROAD ROHTAK

CONSULTANTS  
**SURCON SURVEYORS**  
SURVEY & CIVIL ENGINEERING  
15/7 / 21, CHUNNI PURA, ROHTAK, 12401  
PH : 82150467 / 7381808262, 0410048717  
PH : ( RES. ) : 01262 - 246717  
Email : surconsurveyors@gmail.com

DRAWN BY  
DATE 08/02/16  
SCALE 1 : 500  
RANK



# LAYOUT PLAN OF SURYA NAGAR HISAR ROAD

## SURYA NAGAR (HISAR ROAD) (WARD NO. 1)



STATEMENTS OF DISTRICT

| S.No. | Dist.No. | Length | Width | Area in Sqm |
|-------|----------|--------|-------|-------------|
| 1     | A-1      | 12.37  | 3.68  | 45.52       |
| 2     | A-2      | 28.79  | 3.72  | 107.30      |
| 3     | A-3      | 389.81 | 6.26  | 2437.26     |
| 4     | B-1      | 98.23  | 4.55  | 446.95      |
| 5     | C-1      | 50.83  | 4.43  | 225.16      |
| 6     | C-2      | 145.34 | 5.27  | 765.93      |
| 7     | D-1      | 102.84 | 5.81  | 597.51      |
| 8     | D-2      | 85.2   | 4.93  | 419.28      |
| 9     | E-1      | 81.38  | 4.20  | 341.80      |
| 10    | F-1      | 85.27  | 5.18  | 441.89      |
| 11    | G-1      | 118.8  | 5.94  | 705.82      |
| 12    | G-2      | 119.83 | 4.93  | 593.94      |
| 13    | H-1      | 186.25 | 3.52  | 655.80      |
| 14    | H-2      | 109.53 | 3.52  | 385.34      |
| 15    | H-3      | 20.69  | 3.52  | 72.81       |
| 16    | I-1      | 85.47  | 5.77  | 491.21      |
| 17    | D-3      | 81.22  | 5.96  | 484.37      |
| 18    | F-2      | 84.42  | 3.38  | 285.44      |
| 19    | F-3      | 85.26  | 3.28  | 279.81      |
| 20    | F-4      | 95.26  | 3.48  | 331.58      |
| 21    | F-5      | 102.19 | 3.68  | 376.08      |
| 22    | F-6      | 84.36  | 3.38  | 285.09      |
| 23    | F-7      | 78.36  | 3.78  | 294.11      |
| 24    | F-8      | 30.05  | 5.12  | 153.86      |
| 25    | F-9      | 102.44 | 5.78  | 592.11      |
| 26    | F-10     | 82.52  | 4.68  | 386.18      |
| 27    | F-11     | 104.09 | 4.48  | 464.32      |
| 28    | F-12     | 88.51  | 4.88  | 431.69      |
| 29    | F-13     | 41.26  | 4.27  | 175.17      |
| 30    | F-14     | 75.7   | 4.44  | 336.10      |
| 31    | F-15     | 81.88  | 5.87  | 480.76      |
| 32    | F-16     | 35.68  | 5.72  | 203.87      |
| 33    | F-17     | 35.68  | 5.68  | 202.62      |
| 34    | F-18     | 38.83  | 5.68  | 219.62      |
| 35    | F-19     | 38.83  | 5.68  | 219.62      |
| 36    | F-20     | 73.88  | 4.47  | 332.29      |
| 37    | F-21     | 66.24  | 3.24  | 214.82      |
| 38    | F-22     | 44.28  | 4.02  | 178.21      |
| 39    | F-23     | 87.29  | 3.99  | 347.91      |
| 40    | F-24     | 84.21  | 3.77  | 316.28      |
| 41    | F-25     | 78.13  | 3.98  | 310.96      |
| 42    | F-26     | 87.62  | 4.23  | 370.65      |
| 43    | F-27     | 62.6   | 4.33  | 271.08      |
| 44    | F-28     | 71.89  | 4.87  | 349.99      |
| 45    | F-29     | 85.91  | 5.81  | 498.91      |
| 46    | F-30     | 95.76  | 5.87  | 560.20      |
| 47    | F-31     | 114.41 | 5.79  | 660.26      |
| 48    | F-32     | 102.73 | 5.77  | 592.67      |
| 49    | F-33     | 79.4   | 5.68  | 450.72      |
| 50    | F-34     | 104.81 | 5.82  | 609.83      |
| 51    | F-35     | 103.16 | 5.81  | 599.54      |
| 52    | F-36     | 102.13 | 5.81  | 592.99      |
| 53    | F-37     | 65.24  | 3.49  | 227.69      |
| 54    | F-38     | 65.29  | 3.13  | 206.36      |
| 55    | F-39     | 85.3   | 2.91  | 248.22      |
| 56    | F-40     | 82.85  | 4.82  | 399.46      |
| 57    | F-41     | 86.89  | 4.82  | 418.19      |
| 58    | F-42     | 86.89  | 4.82  | 418.19      |
| 59    | F-43     | 41.8   | 4.82  | 201.47      |
| 60    | F-44     | 82.88  | 4.35  | 358.53      |
| 61    | F-45     | 53.89  | 3.72  | 200.49      |
| 62    | F-46     | 85.18  | 3.72  | 316.87      |
| 63    | F-47     | 62.91  | 3.27  | 205.61      |
| 64    | F-48     | 84.81  | 3.27  | 277.32      |
| 65    | F-49     | 88.4   | 4.44  | 390.70      |
| 66    | F-50     | 72.28  | 5.18  | 374.61      |
| 67    | F-51     | 42.68  | 4.12  | 175.76      |
| 68    | F-52     | 43.67  | 4.54  | 198.32      |
| 69    | F-53     | 81.8   | 4.28  | 348.10      |
| 70    | F-54     | 112.86 | 3.25  | 366.89      |
| 71    | F-55     | 43.78  | 3.18  | 139.21      |
| 72    | F-56     | 24.57  | 4.85  | 118.94      |
| 73    | F-57     | 84.81  | 4.57  | 386.70      |
| 74    | F-58     | 33.35  | 3.85  | 128.29      |
| 75    | F-59     | 33.35  | 3.85  | 128.29      |
| 76    | F-60     | 35.68  | 3.51  | 125.22      |
| 77    | F-61     | 35.68  | 3.51  | 125.22      |

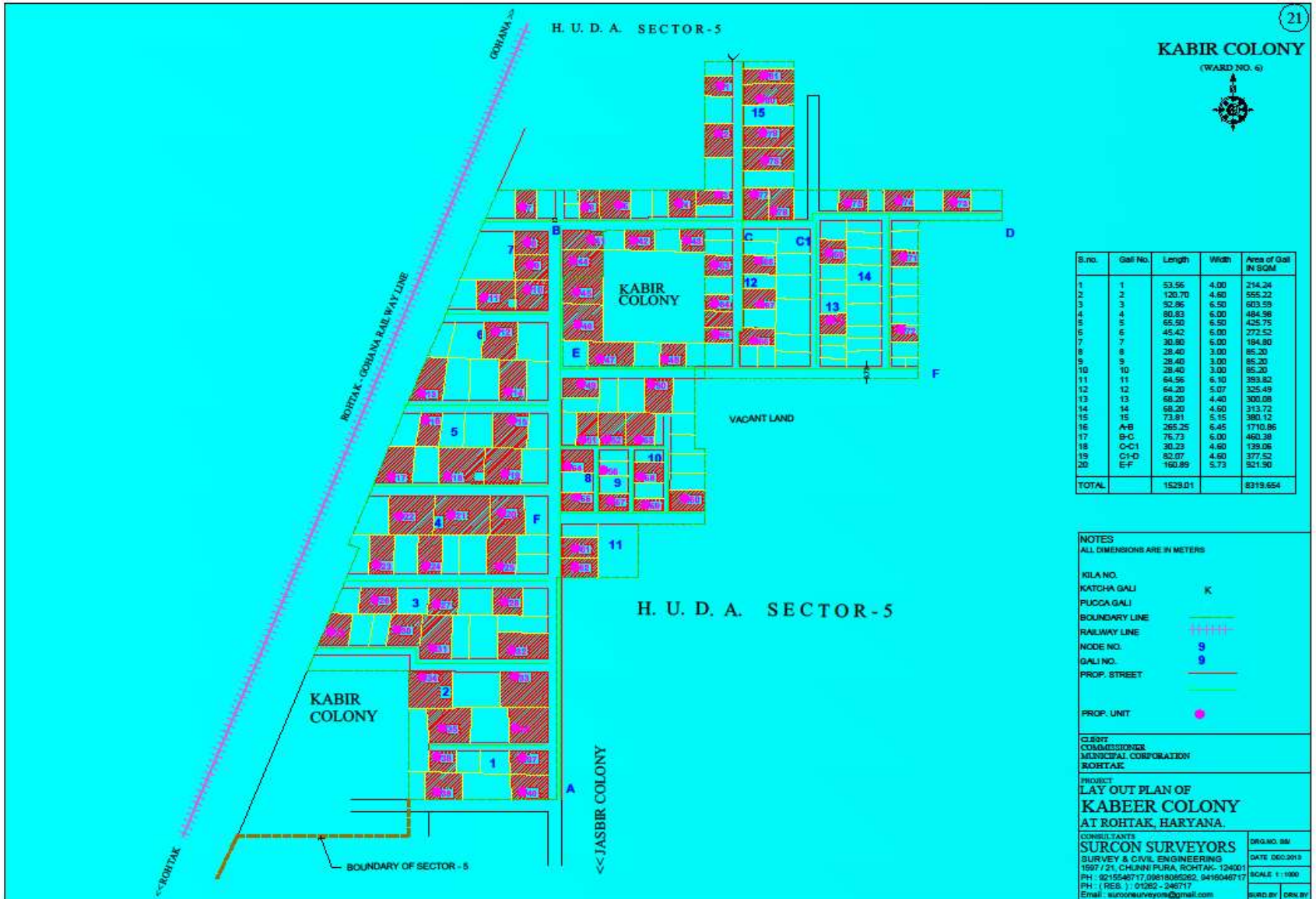
TOTAL: 6281.23      28857.81

NOTES:  
 ALL DIMENSIONS ARE IN METERS  
 SURVEY DATE: 2011  
 BOUNDARY LINE: ---  
 MAIN ROAD: =====  
 DISTRICT ROAD: - - - - -  
 PROPOSED ROAD: - - - - -  
 PROPOSED CANAL: ■■■■■

SCALE: 1:500  
 DATE: 2011  
 SURVEYOR: SUBCON SURVEYORS  
 SURVEY & CIVIL ENGINEERS  
 101/11, CHANDI PUNJ, KOTA, RAJASTHAN  
 (M. 94141 41414) (F. 94141 41414)  
 Email: subcon\_surya@gmail.com



# LAYOUT PLAN OF KABIR COLONY



21

**KABIR COLONY**  
(WARD NO. 6)



| S.No.        | Gali No. | Length         | Width | Area of Gali IN SQM |
|--------------|----------|----------------|-------|---------------------|
| 1            | 1        | 53.56          | 4.00  | 214.24              |
| 2            | 2        | 130.70         | 4.60  | 555.22              |
| 3            | 3        | 52.96          | 6.50  | 603.59              |
| 4            | 4        | 80.83          | 6.00  | 484.98              |
| 5            | 5        | 65.50          | 6.50  | 425.75              |
| 6            | 6        | 46.42          | 6.00  | 277.52              |
| 7            | 7        | 30.80          | 6.00  | 184.80              |
| 8            | 8        | 28.40          | 3.00  | 85.20               |
| 9            | 9        | 28.40          | 3.00  | 85.20               |
| 10           | 10       | 28.40          | 3.00  | 85.20               |
| 11           | 11       | 64.56          | 6.10  | 393.82              |
| 12           | 12       | 64.20          | 5.07  | 325.49              |
| 13           | 13       | 68.20          | 4.40  | 300.08              |
| 14           | 14       | 68.20          | 4.60  | 313.72              |
| 15           | 15       | 73.81          | 5.15  | 380.12              |
| 16           | A-B      | 265.25         | 6.45  | 1710.86             |
| 17           | B-C      | 76.73          | 6.00  | 460.38              |
| 18           | C-C1     | 30.23          | 4.60  | 139.06              |
| 19           | C1-D     | 82.07          | 4.60  | 377.52              |
| 20           | E-F      | 160.89         | 5.73  | 921.90              |
| <b>TOTAL</b> |          | <b>1529.01</b> |       | <b>8319.654</b>     |

**NOTES**  
ALL DIMENSIONS ARE IN METERS

KILA NO.  
KATCHA GALI K  
PUCCA GALI

BOUNDARY LINE  
RAILWAY LINE

NODE NO. 9  
GALI NO. 9  
PROP. STREET

PROP. UNIT

CLERK  
COMMISSIONER  
MUNICIPAL CORPORATION  
ROHTAK

PROJECT  
**LAY OUT PLAN OF  
KABIR COLONY  
AT ROHTAK, HARYANA.**

CONSULTANTS  
**SURCON SURVEYORS**  
SURVEY & CIVIL ENGINEERING  
1597 / 21, CHUNNI PURA, ROHTAK- 124001  
PH : 9215548717, 09818085262, 94190448717  
PH ( RES. ) 01262 - 248717  
Email : surconsurveyors@gmail.com

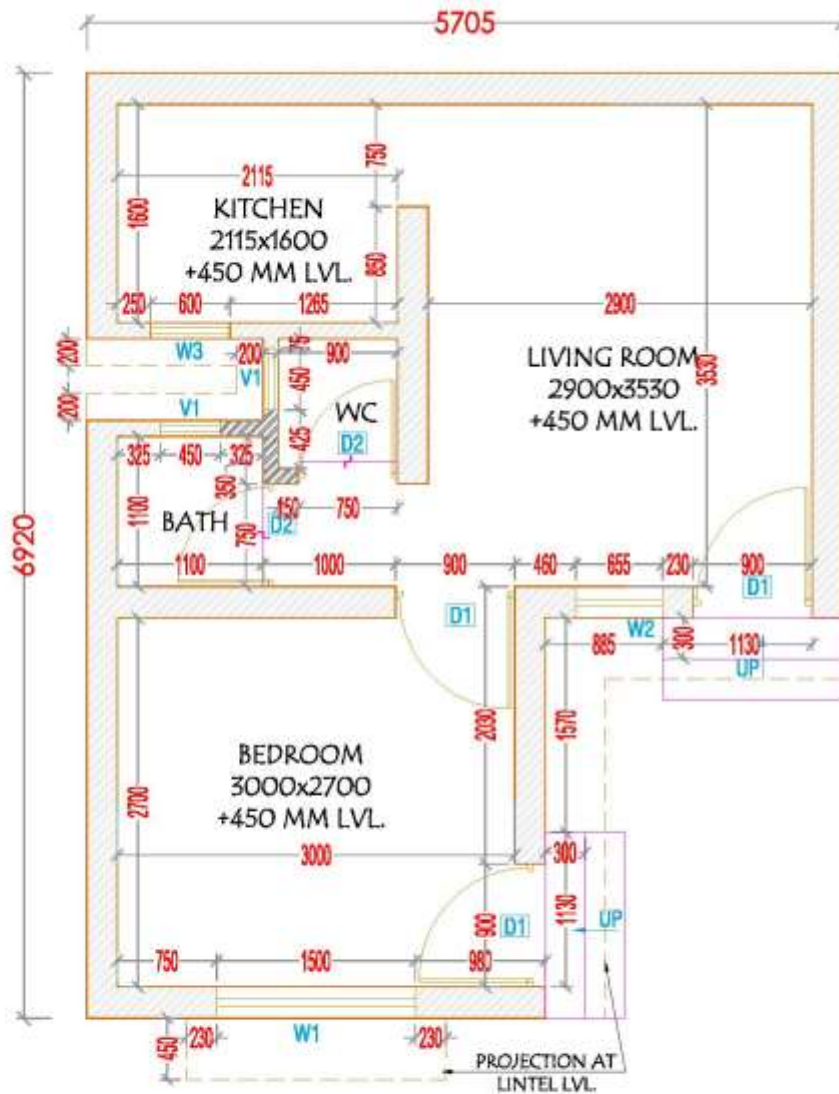
DRG. NO. 088  
DATE 06.02.2013  
SCALE 1 : 1000  
SURD. BY DRN BY

# Grant-in-aid Requirement

- Total Project Cost : Rs. 9412.86 Lacs
  - GOI Share : Rs. 7059.64 Lacs
  - State Share : Rs. 1411.94 Lacs
  - ULB share : Rs. 257.28 Lacs
  - Beneficiary Share : Rs. 684.00 Lacs

# Time frame for completion of project

|      |                                | Time frame for completion of the project at Rohtak |         |         |         |         |         |         |         |         |          |          |          |          |          |          |          |          |          |          |          |          |          |          |          |  |
|------|--------------------------------|--|---------|---------|---------|---------|---------|---------|---------|---------|----------|----------|----------|----------|----------|----------|----------|----------|----------|----------|----------|----------|----------|----------|----------|--|
| S.No | Aspect /Month                  | Month 1  | Month 2 | Month 3 | Month 4 | Month 5 | Month 6 | Month 7 | Month 8 | Month 9 | Month 10 | Month 11 | Month 12 | Month 13 | Month 14 | Month 15 | Month 16 | Month 17 | Month 18 | Month 19 | Month 20 | Month 21 | Month 22 | Month 23 | Month 24 |  |
| 1    | Construction of Dwelling Units |  |         |         |         |         |         |         |         |         |          |          |          |          |          |          |          |          |          |          |          |          |          |          |          |  |
| 2    | Road                           |  |         |         |         |         |         |         |         |         |          |          |          |          |          |          |          |          |          |          |          |          |          |          |          |  |
| 3    | Water Supply                   |  |         |         |         |         |         |         |         |         |          |          |          |          |          |          |          |          |          |          |          |          |          |          |          |  |
| 4    | Storm water Drainage           |  |         |         |         |         |         |         |         |         |          |          |          |          |          |          |          |          |          |          |          |          |          |          |          |  |
| 5    | Sewer Line                     |  |         |         |         |         |         |         |         |         |          |          |          |          |          |          |          |          |          |          |          |          |          |          |          |  |
| 6    | Electricity                    |  |         |         |         |         |         |         |         |         |          |          |          |          |          |          |          |          |          |          |          |          |          |          |          |  |
| 7    | Community building             |  |         |         |         |         |         |         |         |         |          |          |          |          |          |          |          |          |          |          |          |          |          |          |          |  |



#### CARPET AREA

| S. NO.     | TYPE        | SIZE (IN M.) | AREA (IN SQM.) |
|------------|-------------|--------------|----------------|
| 1.         | LIVING ROOM | 2900X3530    | 10.24          |
| 2.         | BEDROOM     | 3000X2700    | 8.10           |
| 3.         | KITCHEN     | 2115X1600    | 3.38           |
| 4.         | BATH        | 1100X1100    | 1.21           |
| 5.         | W.C.        | 0.90X1.00    | 0.90           |
| 6.         | PASSAGE     | 1.130X0.750  | 0.85           |
| TOTAL AREA |             |              | 24.68 SQM.     |

#### SCHEDULE OF DOOR'S OPENING

| S. NO. | TYPE | SIZE     | DESCRIPTION                   |
|--------|------|----------|-------------------------------|
| 1.     | D1   | 900X2100 | FLUSH DOOR (ANGLE IRON FRAME) |
| 2.     | D2   | 750X2100 | PVC DOOR (ANGLE IRON FRAME)   |

#### SCHEDULE OF WINDOW'S OPENING

| S. NO. | TYPE | SIZE      | DESCRIPTION    |
|--------|------|-----------|----------------|
| 1.     | W1   | 1500x1200 | SECTION WINDOW |
| 2.     | W2   | 655x1200  | SECTION WINDOW |
| 3.     | W3   | 600x1050  | SECTION WINDOW |

#### SCHEDULE OF VENTILATOR'S OPENING

| S. NO. | TYPE | SIZE    | DESCRIPTION |
|--------|------|---------|-------------|
| 1.     | V1   | 450x600 | JALI        |

#### NOTES:

- THIS DRAWING IS THE PROPERTY OF GCRD AND IS NOT TO BE REPRODUCED, COPIED, HANDED OVER TO A THIRD PARTY OR USED FOR ANY PURPOSE OTHER THAN THAT FOR WHICH IT HAS BEEN LOANED.
- THIS DRAWING SUPERCEDES ALL OTHER PREVIOUS DRAWINGS ISSUED.
- DO NOT SCALE THE DRAWING, FOLLOW WRITTEN DIMENSIONS ONLY
- ANY DISCREPANCIES BE BROUGHT TO THE IMMEDIATE NOTICE OF THE ARCHITECT BEFORE EXECUTION ON SITE
- COMPOUND WALL THK ARE AS ON SITE
- MARKINGS OF PLOT AND ROAD DO IN TEMPORARY FENCING FROM SURVEYOR
- ALL DIMENSION ARE IN MILLIMETERS, UNLESS OTHERWISE SPECIFIED
- INDICATES COMMON FACE OF COLUMN UNTIL TOP

CLIENT : MUNICIPAL CORPORATION, ROHTAK

JOB TITLE : PROPOSED LAYOUT PLAN OF RESIDENTIAL SCHEME

DRAWING TITLE

GROUND FLOOR PLAN

DWG. NO. ARCH-01

REV.

SCALE : N.T.S.

DRW. BY :

DATE :

CHKD. BY :

PROJECT ARCHITECT:



Global Centre of Research and Development, New Delhi

DETAIL PROJECT REPORT UNDER RAJIV AWAS YOJANA , ROHTAK



Municipal Corporation, Rohtak-Detailed Project Report



Municipal Corporation, Rohtak-Detailed Project Report



Municipal Corporation, Rohtak-Detailed Project Report









# **Detailed Project Report of Hansi**

## **RELOCATION OF PRITHVI RAJ SINGH CHAUHAN FORT SLUM**

**Municipal Council , Hansi**

# **Introduction (Hansi Municipal Council)**

- **Total number of Slums in the City = 15**
- **Urban Population = 86770 (Slum Census, 2011)**  
**Slum Population = 42625 (Slum Census, 2011)**  
**Percent of Slum Population = 49.1 %**  
**Number of H.H = 8245**  
**Household Size = 5.17**  
**Literacy rate = 66.8 %**  
**Sex Ratio = 877**

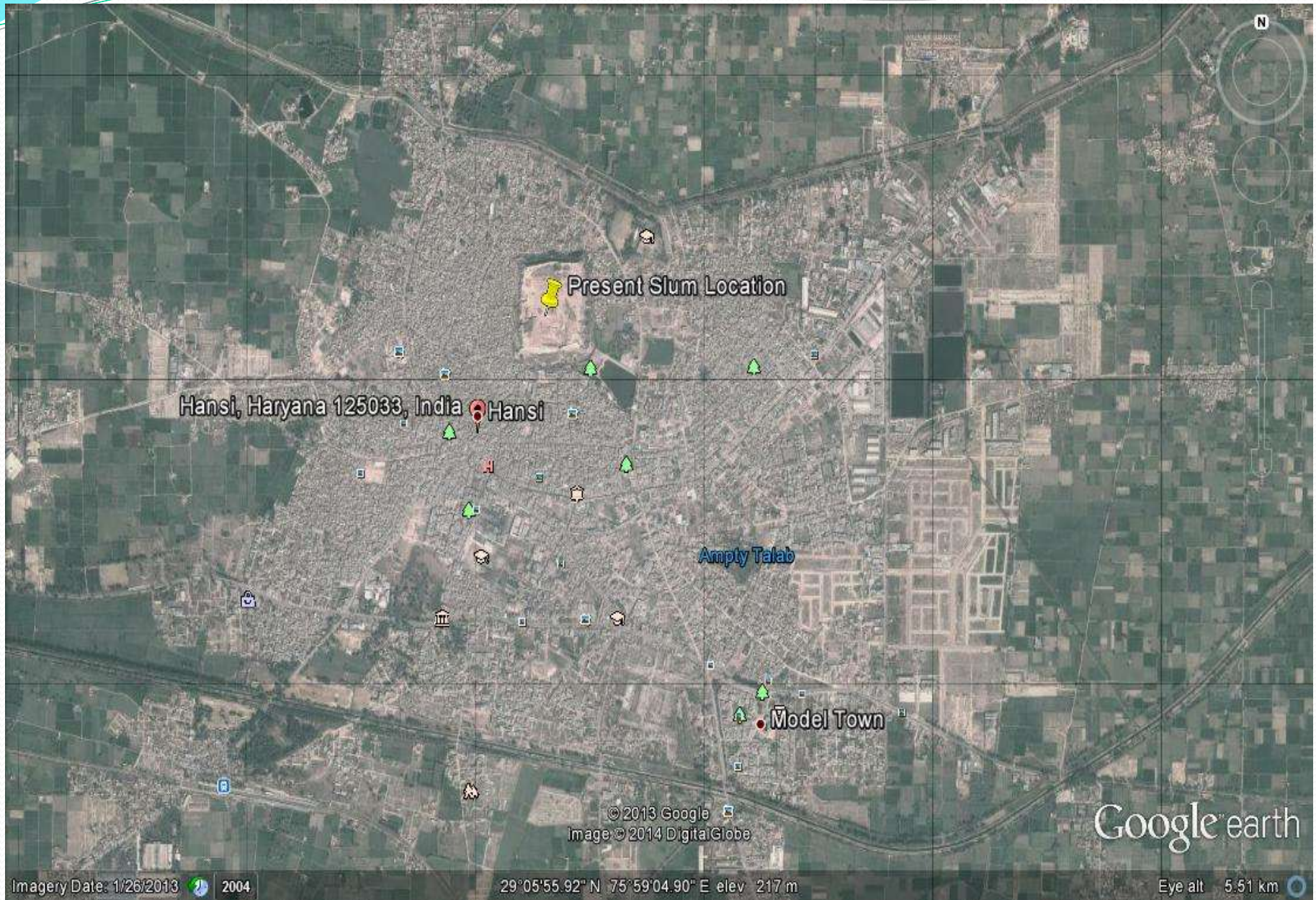
# **Prithvi Raj Singh Chauhan Fort Slum : Profile**

- **Total Slum Addressed in the project = 1**
- **Name of the slum = Prithvi Raj Singh Chauhan Fort Slum**
- **Location : At the heart of M. Council area with in the city.**
- **Total households in the project = 192 families**
- **Total population of the Slum = 995**
- **Total area of the Slum = 8500 Square Meters**
- **Hon'ble Court has directed the District /Town Administration for rehabilitation of this slum.**

## **Prithvi Raj Singh Chauhan Fort Slum : Completed exercises**

- **Socio Economic Survey** = **Complete**
- **GIS Mapping** = **Complete**
- **GIS – MIS Integration** = **Complete**
- **Biometric Identification of Beneficiaries** = **Complete**
- **RAY Card** = **Complete**
- **Community Meeting** = **Organized**
- **Beneficiaries consent for relocation** = **Taken**
- **Beneficiary consent for contribution of their share** = **Taken**

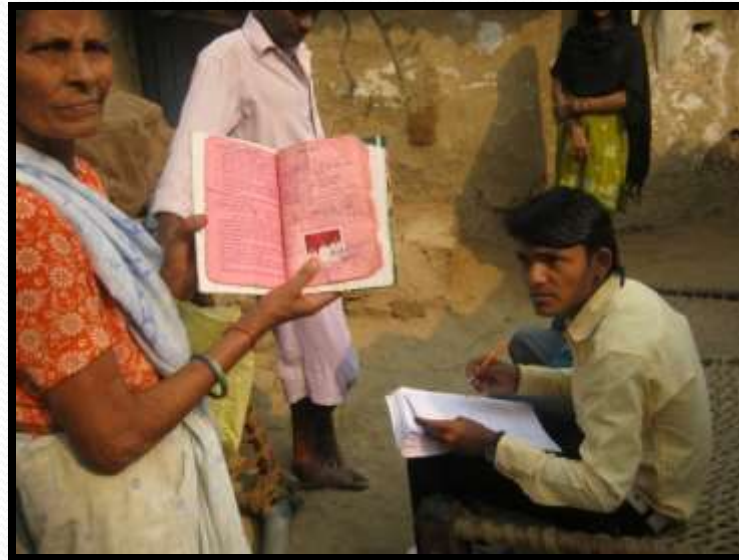
# Location of the Slum in the Hansi Town





# Survey Methodology

**Household  
Survey**



**Bio-metric  
Survey**



**Livelihood  
Survey**



# Community Consent

Community Participation Meeting  
At  
Hansi

Date 7/9/2013

Place - Prithvi Raj Chauhan  
Fort

आज दिनांक 7/9/2013 दिन गुरुवार स्थान पृथ्वी राज चौहान किला में राजीव  
आवास योजना के अंतर्गत Community Participation Meeting का आयोजन किया  
जा रहा है। जिसमें तस्वी व सुग्गीवासी के परिवारों में भाग लिया, जिसमें  
ग्रहणी सेक्टर और स्थिति एका इन्फार्मेशन के अधिकारियों ने व नगर-  
निगम के अधिकारियों ने राजीव आवास योजना के बारे में विस्तार से समझता  
कि प्रकल्प का काम 3 लाख होगा। जिसमें से हम सुग्गीवासी 30 से 35  
एगार रुपये देने के लिए तैयार हैं तथा आवश्यकता पड़े पर हम राजीव  
आवास योजना के तहत लोन भी लेने को तैयार हैं। और हम अपना मकान  
धीरे धीरे नए मकान में जाने के लिए तैयार हैं। राजीव आवास योजना के अंतर्गत  
सुग्गीवासी स्थान ले सकते हैं।

राकेश  
नीतू  
रामभक्तवार  
अजय  
कुशल  
रेखा  
पुल्ल सिंह  
कपूर  
सौदन लाल  
श्रीधर  
मनीष  
चन्दर

जय नारायण  
अशोक बंस  
मदन  
बाल राम  
देशराज  
रामेश  
ईशवर  
चन्दर भानु  
बाल  
शिव दयाल  
जोगी राम  
भीम सिंह  
वेद प्रकाश  
सजय  
कृष्णा कृष्णा  
ओम प्रकाश  
जीविंद  
विमला  
तेज भानु  
सुदेश  
शय चंदा  
नानु राम  
अशोक  
वीरा देवी



# RAJIV AWAS YOJANA (RAY)

*A Combined Effort of*  
Government of Haryana & Government of India



*Executed by*  
Municipal Council of Hansi

**Name of Beneficiary: BALWANT**

**Fathers Name: LT. CAHANDER**

**House No. / Biometric ID No: 195 / 195**

**Slum Name : Prithvi Raj Chauhan Fort Slum, Hansi**



---

Municipal Council of Hansi



---

Gaheli Center of Research and  
Development Pvt. Ltd., New Delhi

# Addressing the issue

Slum are located on land belonging to ASI

It is planned to relocate on Municipal Council Land.

The ownership and possession of the proposed site lies with Municipal Council Hansi.

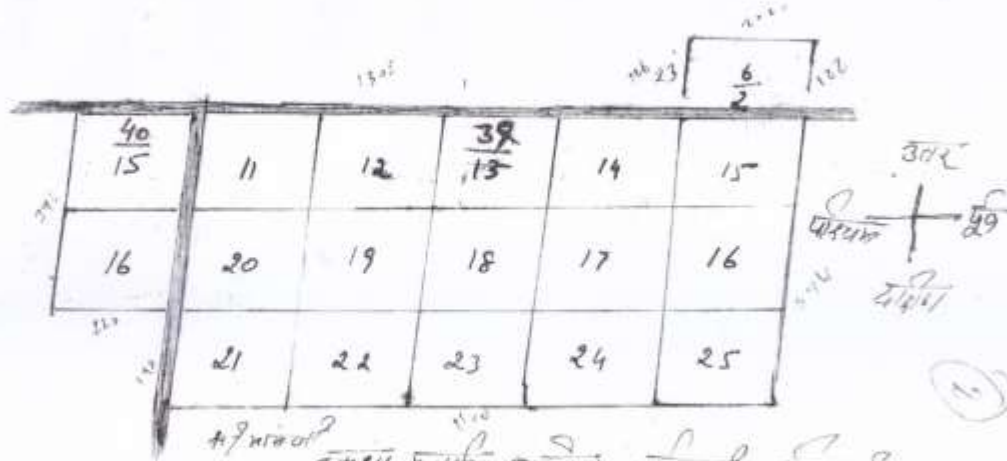
# Current location of Prithvi Raj Chauhan Fort Slum and its Relocation Site



# KHASARA MAP

मा. नं. २०१ गाँव वीडि हौली वैशाली हौली निसा हौली  
 120

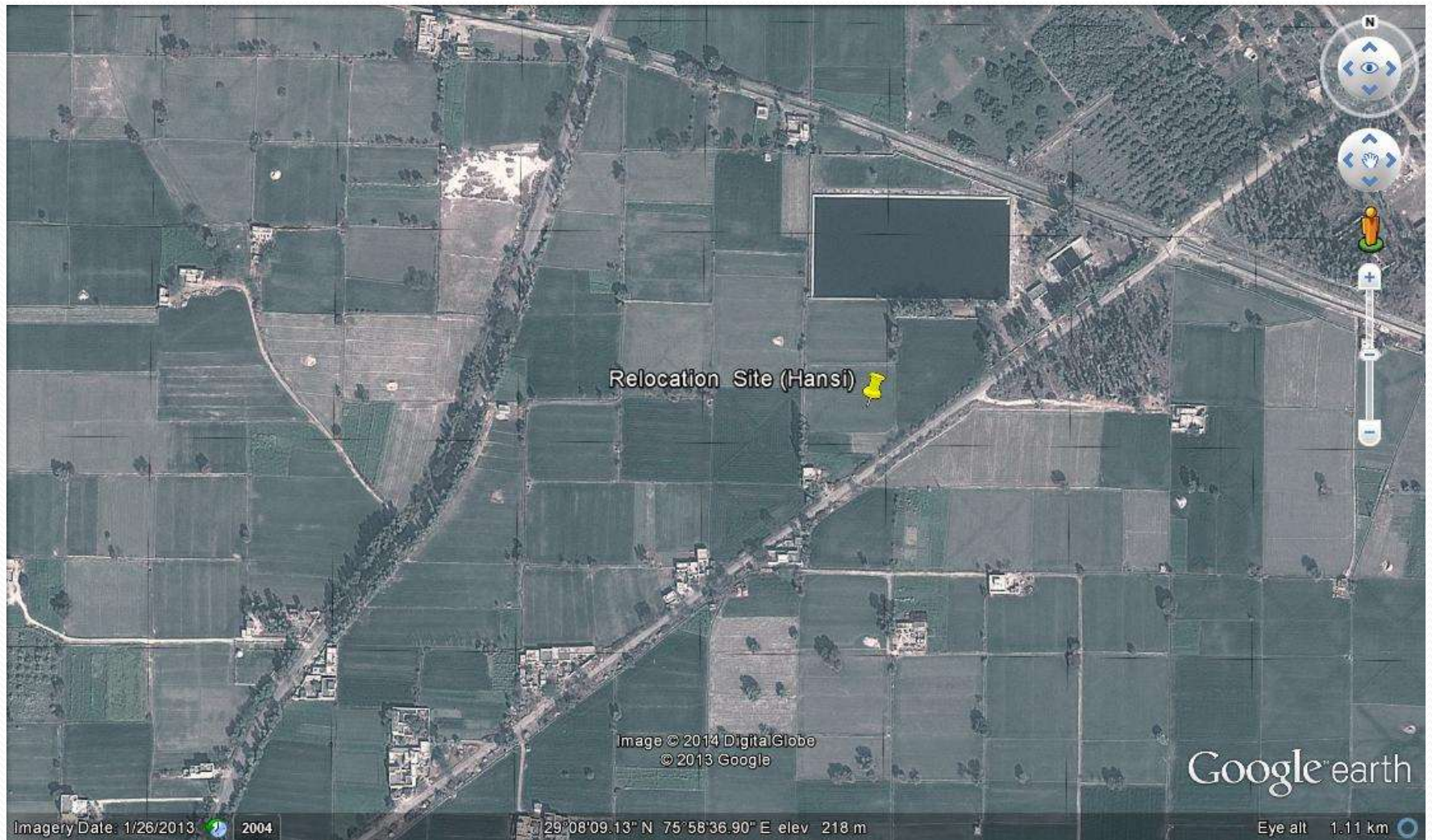
फसला 40 कत - 1 इरय



अ. नं. २०१  
 तमगा 5 गाँव (कोकरा) नाम गाँव (पिपरा)  
 का मा. नं. २०१ दिनांक २-५-२००१ के तहत न. १ बंगला बनाई

मा. नं. २०१  
 23 का (2.5 का)

# Demarcation of Khasra on Google Map



# Proposals

Construction of 192 houses

Sewer System

Water Supply System

Storm Water Drainage System

Road and paver

Electrical Wiring

Proposal for Informal Market

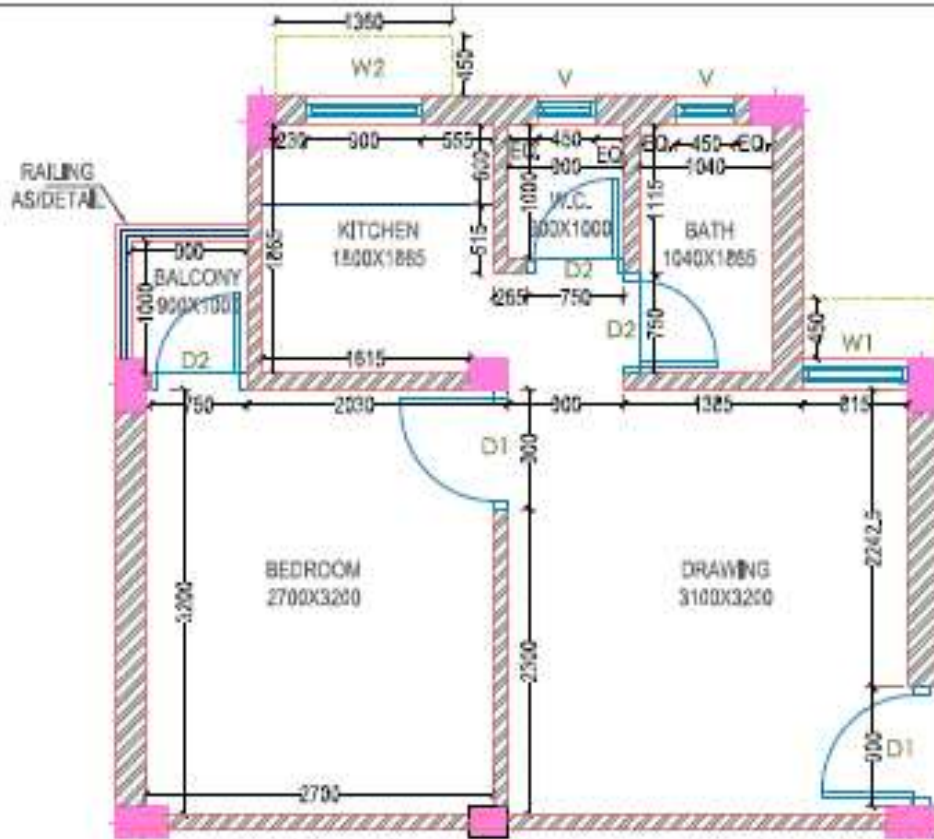


**PROJECT SUMMARY**

**COST FOR PROPOSED HOUSING SCHEME FOR RESIDENTAL SCHEME AT HANSI UNDER RAJIV AWAS YOJNA**

| <b>SR. NO.</b> | <b>PROJECT COMPONENTS</b>   | <b>TOTAL COST (IN LAKHS)</b> | <b>CENTRAL SHARE (IN LAKHS)</b> | <b>STATE SHARE (IN LAKHS)</b> | <b>ULB SHARE (IN LAKHS)</b> | <b>BENEFICIARIES SHARE (IN LAKHS)</b> |
|----------------|---|------------------------------|---------------------------------|-------------------------------|-----------------------------|---------------------------------------|
| <b>A</b>       | <b>HOUSING</b>  |                              |                                 |                               |                             |                                       |
|                | Construction of 192 Dus @ Rs.308850.00/- per DU (G+3) storied house (Drawing Room, Bed Room, Kitchen, WC and Bath.) | 592.99                       | 444.74                          | 88.95                         | 0.00                        | 59.30                                 |
|                | <b>Sub Total (A)</b>  | <b>592.99</b>                | <b>444.74</b>                   | <b>88.95</b>                  | <b>0.00</b>                 | <b>59.30</b>                          |
| <b>B1</b>      | <b>UTILITY INFRASTRUCTURE</b>   |                              |                                 |                               |                             |                                       |
| <b>1</b>       | <b>Road</b>   |                              |                                 |                               |                             |                                       |
| (i)            | C.C.Road  | 39.63                        | 29.72                           | 5.94                          | 3.96                        | 0.00                                  |
| (ii)           | Interlocking Block  | 7.00                         | 5.25                            | 1.05                          | 0.70                        | 0.00                                  |
| <b>2</b>       | <b>Water Supply</b>   |                              |                                 |                               |                             |                                       |
| (i)            | OHWT  | 19.50                        | 14.63                           | 2.93                          | 1.95                        | 0.00                                  |
| (ii)           | Pipeline (Rising Main & Distribution)   | 4.17                         | 3.13                            | 0.63                          | 0.42                        | 0.00                                  |
| (iii)          | Pump station, Pump Room and Tubewell  | 15.55                        | 11.66                           | 2.33                          | 1.56                        | 0.00                                  |
| <b>3</b>       | <b>Storm Water Drains</b>   |                              |                                 |                               |                             |                                       |
| (i)            | Onsite drain  | 4.48                         | 3.36                            | 0.67                          | 0.45                        | 0.00                                  |
| <b>4</b>       | <b>Sewerage</b>   |                              |                                 |                               |                             |                                       |
| (i)            | Pipeline (Main trunk line & distribution)   | 5.53                         | 4.15                            | 0.83                          | 0.55                        | 0.00                                  |
| (ii)           | Septic Tank   | 2.43                         | 1.82                            | 0.36                          | 0.24                        | 0.00                                  |
| <b>5</b>       | <b>Electrification</b>  |                              |                                 |                               |                             |                                       |
| (i)            | Street light pole   | 2.67                         | 2.00                            | 0.40                          | 0.27                        | 0.00                                  |
| (ii)           | Transformers  | 3.84                         | 2.88                            | 0.58                          | 0.38                        | 0.00                                  |
| <b>6</b>       | <b>Boundary Fencing</b>   | 1.41                         | 1.06                            | 0.21                          | 0.14                        | 0.00                                  |
| <b>7</b>       | <b>Rain water Harvesting</b>  | 2.96                         | 2.22                            | 0.44                          | 0.30                        | 0.00                                  |
|                | <b>Sub Total (B1)</b>   | <b>109.17</b>                | <b>81.87</b>                    | <b>16.37</b>                  | <b>10.92</b>                | <b>0.00</b>                           |
| <b>B2</b>      | <b>SOCIAL INFRASTRUCTURE</b>  |                              |                                 |                               |                             |                                       |
| <b>8</b>       | Parks   | 7.28                         | 5.46                            | 1.09                          | 0.73                        | 0.00                                  |
| <b>9</b>       | Informal Sector Market  | 1.56                         | 1.17                            | 0.23                          | 0.16                        | 0.00                                  |
|                | <b>Sub Total (B2)</b>   | <b>8.84</b>                  | <b>6.63</b>                     | <b>1.33</b>                   | <b>0.88</b>                 | <b>0.00</b>                           |
|                | <b>Sub Total B (B1+B2)</b>  | <b>118.01</b>                | <b>88.50</b>                    | <b>17.70</b>                  | <b>11.80</b>                | <b>0.00</b>                           |
|                | <b>Sub Total (A+B)</b>  | <b>711.00</b>                | <b>533.25</b>                   | <b>106.65</b>                 | <b>11.80</b>                | <b>59.30</b>                          |
| <b>C</b>       | <b>O&amp;M Cost @ 4% of (A+B)</b>   | 28.44                        | 21.33                           | 7.11                          | 0.00                        | 0.00                                  |
|                | <b>Sub Total (A+B+C)</b>  | <b>739.44</b>                | <b>554.58</b>                   | <b>113.76</b>                 | <b>11.80</b>                | <b>59.30</b>                          |
|                | <b>TOTAL PROJECT COST (A+B+C)</b>   | <b>739.44</b>                | <b>554.58</b>                   | <b>113.76</b>                 | <b>11.80</b>                | <b>59.30</b>                          |

# Unit Plan



UNIT PLAN

| CARPET AREA |         |           |             |              |
|-------------|---------|-----------|-------------|--------------|
| S.NO.       | TYPE    | SIZE (MM) | AREA (SQ.M) | AREA (SQ.FT) |
| 1           | DRAWING | 3100X3200 | 9920        | 1070         |
| 2           | BEDROOM | 2700X3200 | 8640        | 926          |
| 3           | KITCHEN | 1800X1885 | 3393        | 364          |
| 4           | BATH    | 1040X1885 | 1960        | 212          |
| 5           | W.C.    | 1000X1000 | 1000        | 108          |
| 6           | PORCH   | 1800X188  | 339         | 36           |
| 7           | BALCONY | 900X1000  | 900         | 97           |
| TOTAL AREA  |         |           | 20142       | 2169         |

| SCHEDULE OF DOOR'S OPENING |      |      |           |             |
|----------------------------|------|------|-----------|-------------|
| S.NO.                      | TYPE | QTY. | SIZE      | DESCRIPTION |
| 1                          | D1   | 2    | 3000X1000 | FLUSH DOOR  |
| 2                          | D2   | 3    | 1000X1000 | W.C. DOOR   |

| SCHEDULE OF WINDOW'S OPENING |      |      |          |               |
|------------------------------|------|------|----------|---------------|
| S.NO.                        | TYPE | QTY. | SIZE     | DESCRIPTION   |
| 1                            | W1   | 1    | 1800X188 | SCREEN WINDOW |
| 2                            | W2   | 1    | 900X1000 | SCREEN WINDOW |

| SCHEDULE OF VENTILATOR'S OPENING |      |      |         |             |
|----------------------------------|------|------|---------|-------------|
| S.NO.                            | TYPE | QTY. | SIZE    | DESCRIPTION |
| 1                                | V    | 2    | 450X450 | K.C. (V)    |

1 MUNICIPAL COUNCIL OF HAVELI

204 RELOCATION SITE FOR KULM NEAR PRITHVI RAJ SINGH CHAHRAN FORT, HAVELI

400 PROPOSED LAYOUT PLAN OF RESIDENTIAL SCHEME AT HAVELI

204

UNIT PLAN

204

204

204

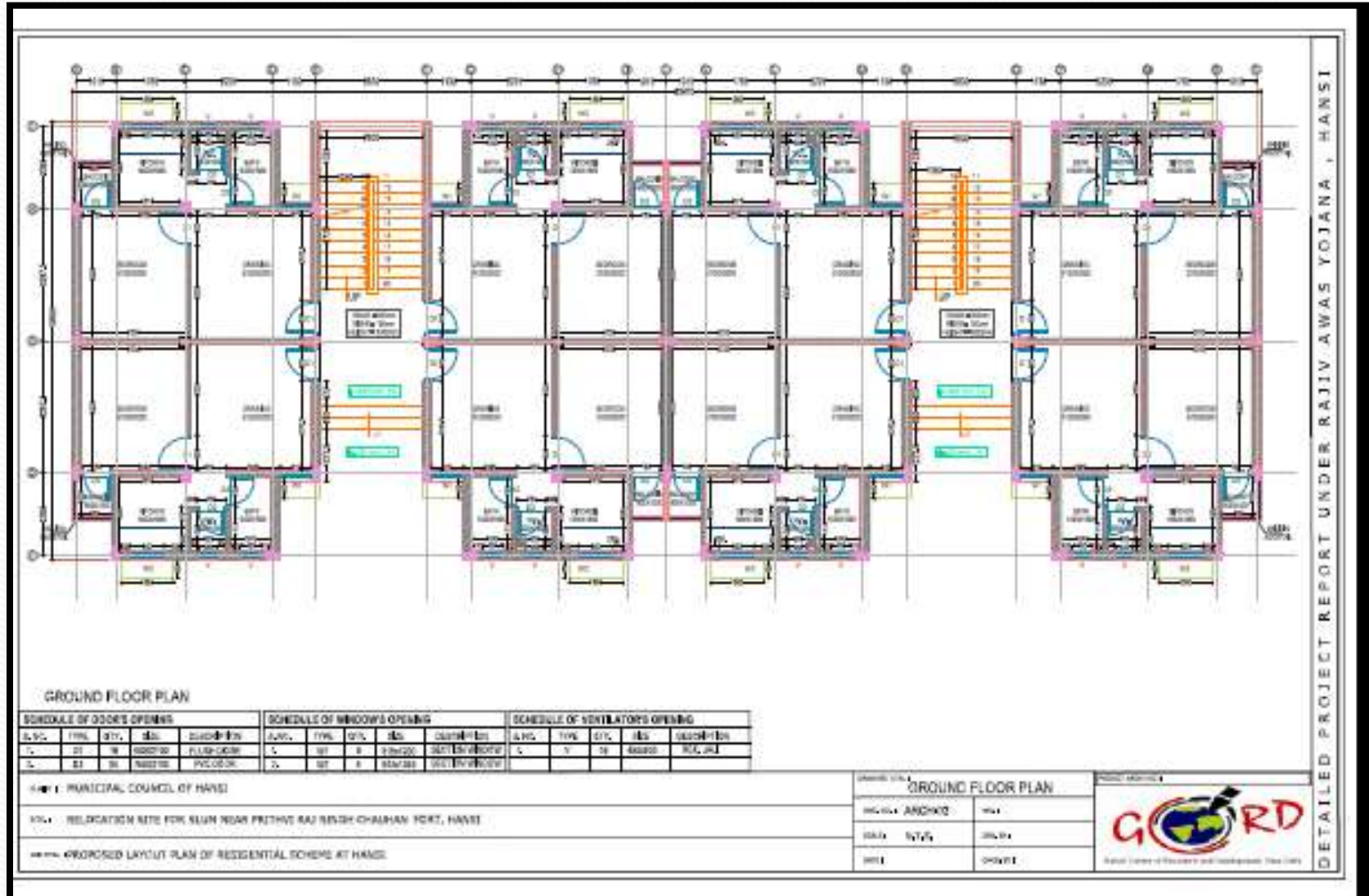
204



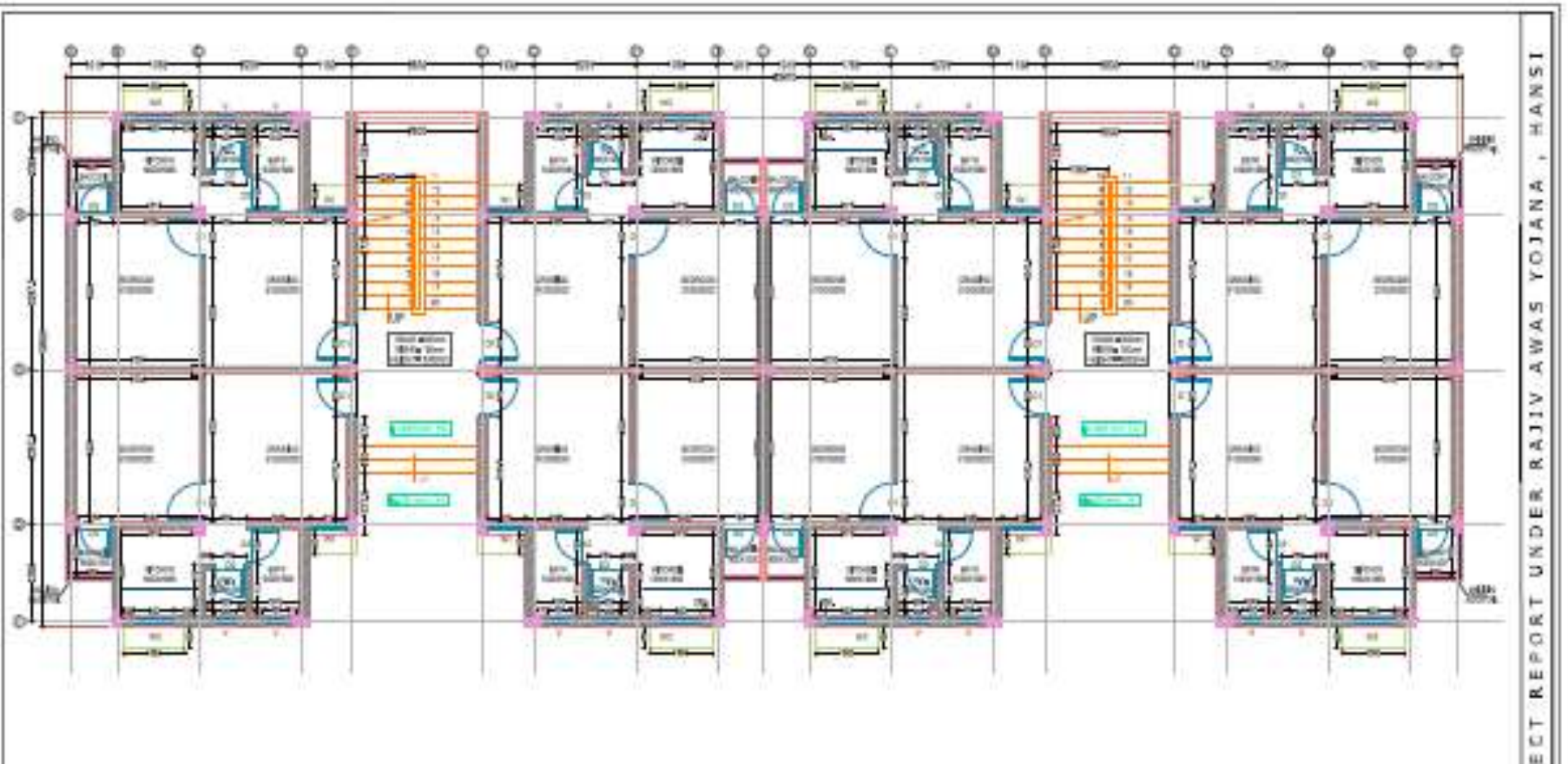
Global Centre of Research and Development, Gurgaon, India

DETAILED PROJECT REPORT UNDER RAJIV AWAS YOJANA, HAVELI

# Unit Block (Cluster of 8 houses)



# Unit Block (Cluster of 8 houses)



GROUND FLOOR PLAN

| SCHEDULE OF DOORS OPENING |      |      |          |             | SCHEDULE OF WINDOWS OPENING |      |      |           |                | SCHEDULE OF VENTILATORS OPENING |      |      |         |             |
|---------------------------|------|------|----------|-------------|-----------------------------|------|------|-----------|----------------|---------------------------------|------|------|---------|-------------|
| S.NO.                     | TYPE | QTY. | SIZE     | DESCRIPTION | S.NO.                       | TYPE | QTY. | SIZE      | DESCRIPTION    | S.NO.                           | TYPE | QTY. | SIZE    | DESCRIPTION |
| 1.                        | BT   | 18   | 1000/800 | FLUSH DOOR  | 1.                          | BT   | 8    | 2100/1200 | SECTION WINDOW | 1.                              | T    | 18   | 800/600 | R/C, JAL    |
| 2.                        | BT   | 36   | 1000/800 | PVC DOOR    | 2.                          | BT   | 8    | 2100/1200 | SECTION WINDOW | 2.                              | T    | 18   | 800/600 | R/C, JAL    |

FOR: MUNICIPAL COUNCIL OF HANSI

FOR: RELOCATION SITE FOR SLUM NEAR PRITHVI RAJ BENCH CHAMHAN FORT, HANSI

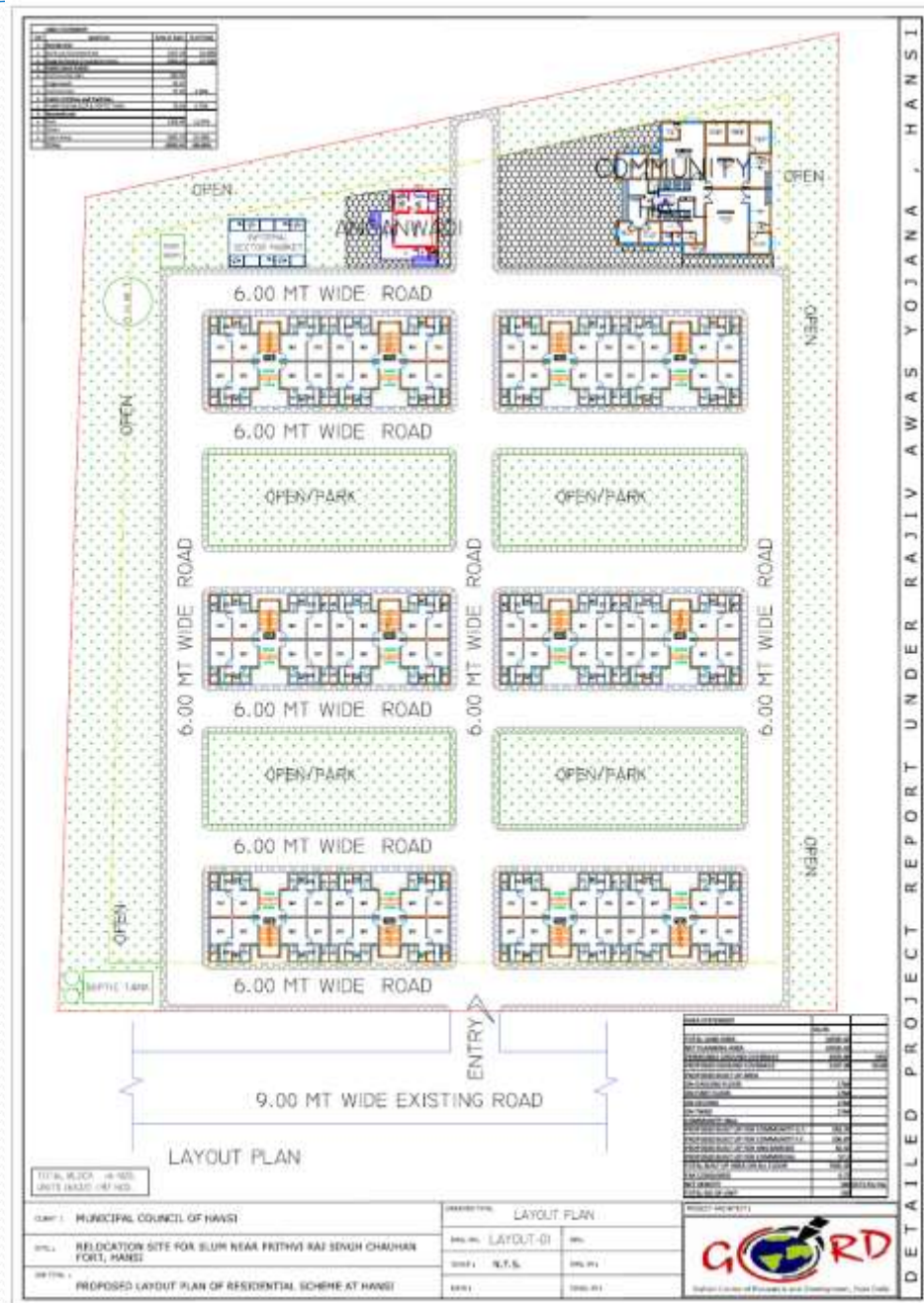
FOR: PROPOSED LAYOUT PLAN OF RESIDENTIAL SCHEME AT HANSI

|               |         |                   |       |
|---------------|---------|-------------------|-------|
| PROJECT TITLE |         | GROUND FLOOR PLAN |       |
| NO. 101       | ARCHIT. | NO. 101           |       |
| DATE          | SCALE   | DATE              | SCALE |
| 2018          | 1/20    | 2018              | 1/20  |



**GORD**  
Global Centre of Research and Development, New Delhi

# Layout Plan



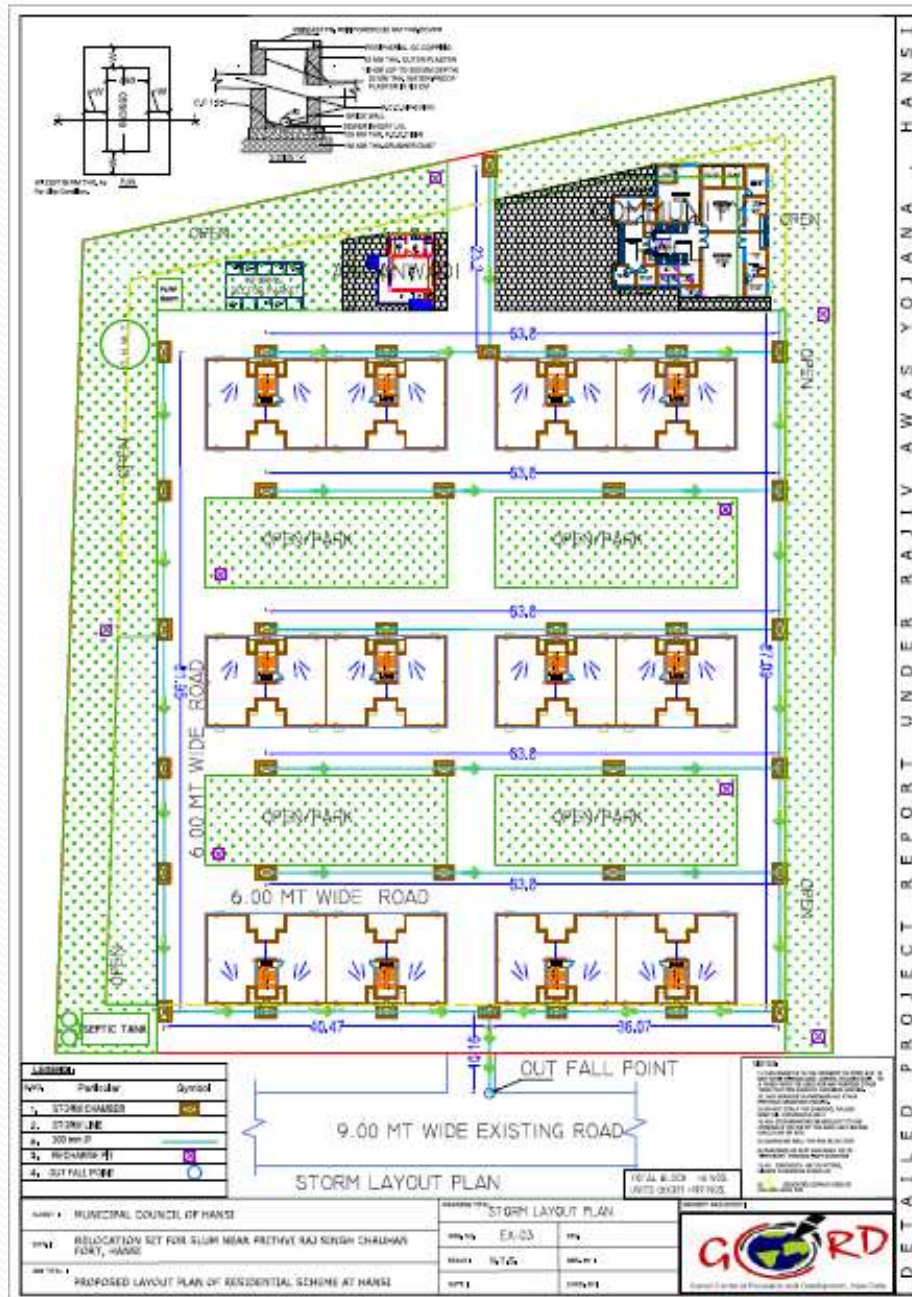
# Road Layout Plan



# Sewer Layout Plan

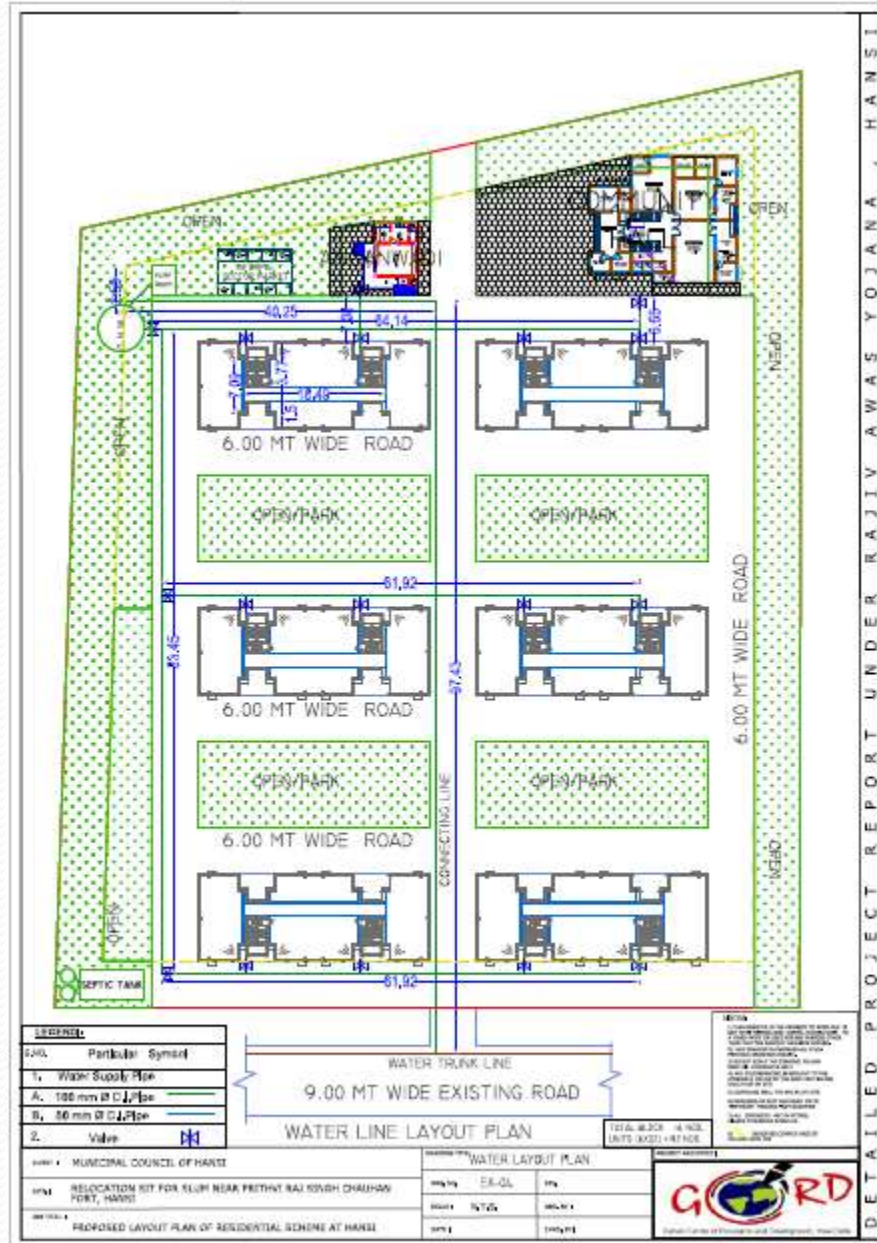


# Storm Water Layout Plan





# Water Supply Layout Plan



DETAILED PROJECT REPORT UNDER RAJIV AWAS YOJANA, HANSI

# Electrical System Layout Plan





**THANKS**



**Some photographs of other IHSDP  
Projects in Haryana**

*Beneficiaries Housing photos pre & after IHSDP benefit.*



***Raju S/o Ram Kumar, Caste – SC, Silani Gate, Jhajjar.***

*Beneficiaries Housing photos pre & after IHSDP benefit.*



***Kela W/o Sher Singh, Caste – BC, Silani Gate -Jhajjar.***

*Beneficiaries Housing photos pre & after IHSDP benefit.*



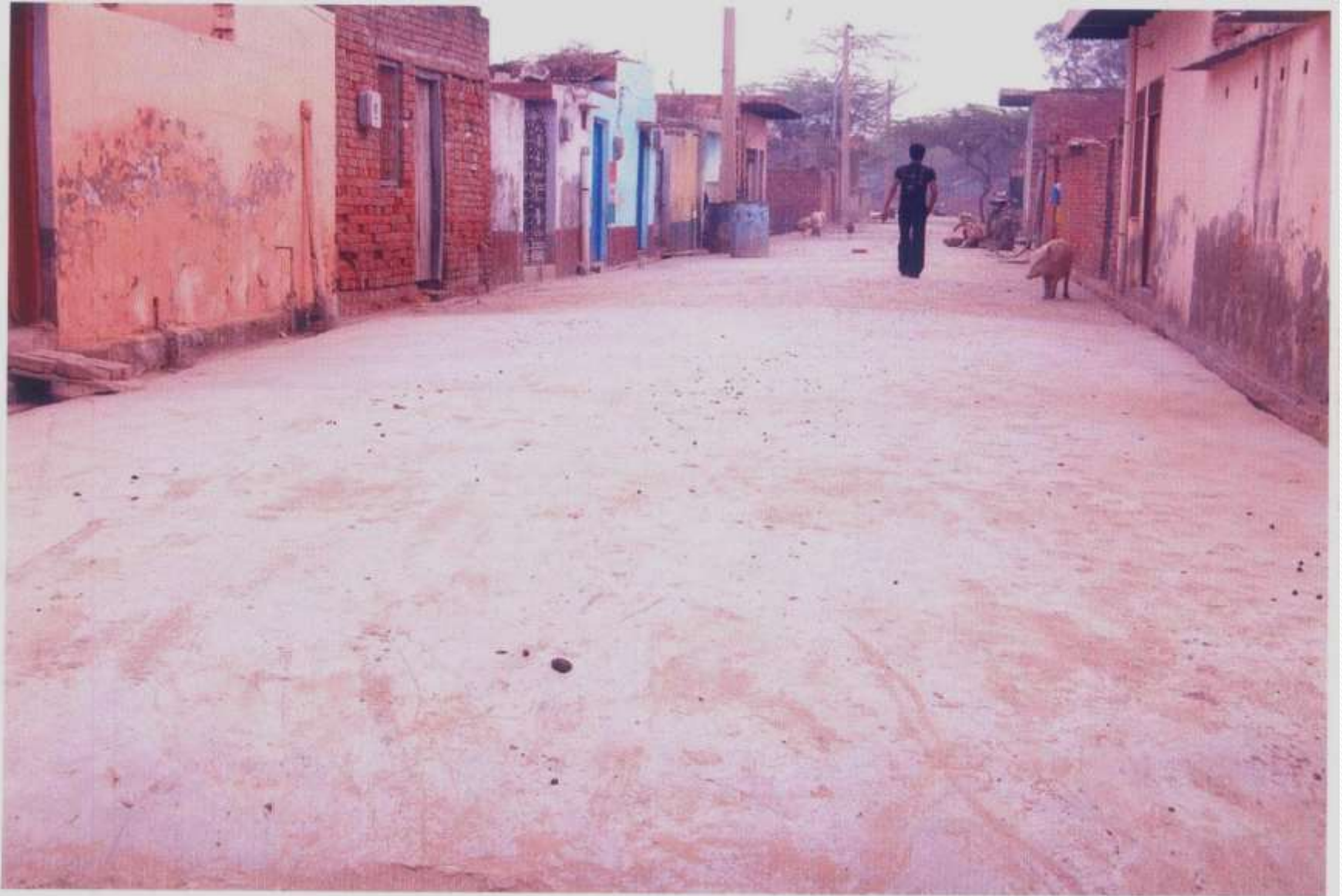
***Jokhu S/o Ram Kumar, Caste – SC, Silani Gate, Jhajjar.***

# Community Toilet





# *CC Street & Drain, Silani Gate*



# *CC Street & Drain, Silani Gate*



# *Street Light, Silani Gate*



# SEWERAGE PUMPING STATION AT BURIA CHOWK

WORK EXECUTED UNDER  
I.H.S.D.P SCHEME

Jagadhari



## TUBEWELL AT NEW JAIN NAGAR(FOR DURGA GARDEN)



MC, Jagadhari

# TUBEWELL AT MUKHERJI PARK ( FOR KALI MANDIR COLONY)



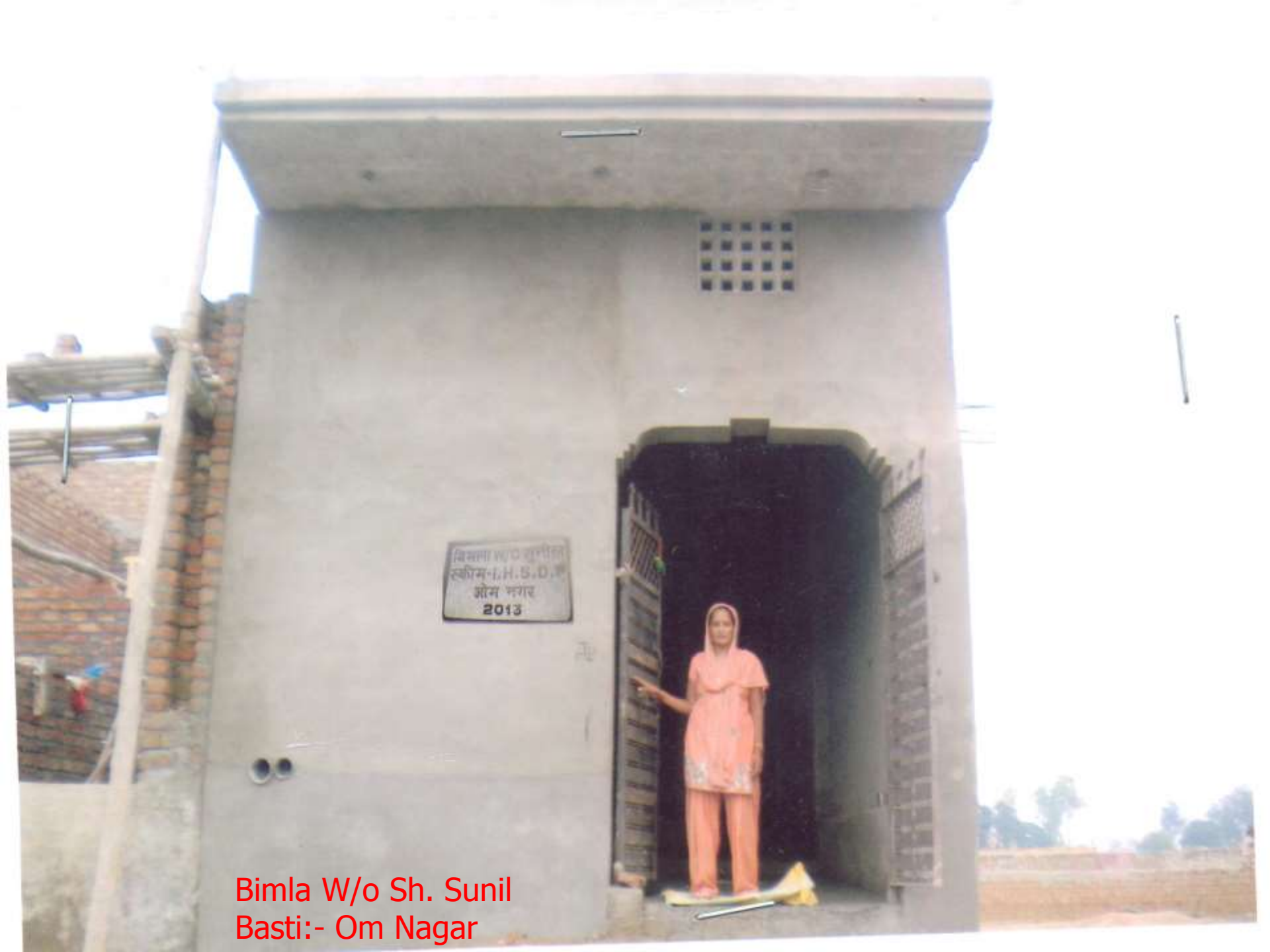
# IHSDP Project at Ladwa

**Ranjit Singh S-O Duli Chand  
Ravidas nagar**



**Rinki W-O Ram Kumar  
Hrijan Basti**





Bimla W/o Sh. Sunil  
Basti:- Om Nagar





Sunita W/o Sh. Mangal  
Basti:- Sharma Nagar, Jind

# Slum : Jhugian Colony

Construction of House of Sh. Satpal S/o Kalu Ram



**Ambala City**

# Slum : Deha Basti

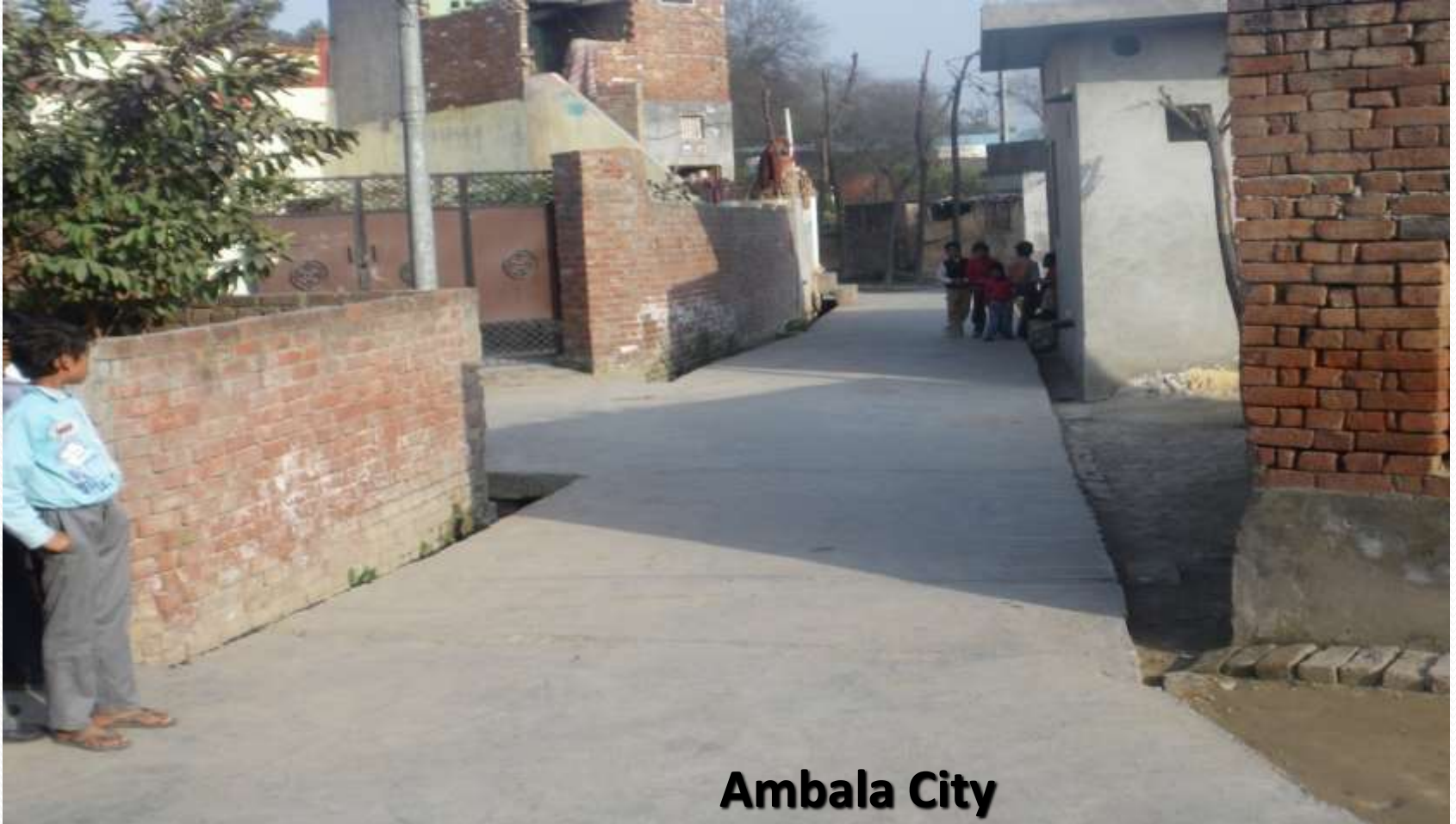
1



**Ambala City**

# Slum : Jhugian Colony

## Construction of Road



**Ambala City**

# Slum : Manmohan Nagar



**Ambala City**

# Slum : Amba Market Near Jhugian

Construction of Community Toilet



# Slum Gandhi Nagar (W. No. 2) Slum Qutubpur (W. No. 24)

## Infrastructure

### (Roads & Streets)



Rewari

Infrastructure  
**Slum Shiv Colony (W. No. 29)**  
**(Street Lights)**

