

RAY - GHAZIABAD

PRESENTATION (IN-SITU PROJECT)

INTRODUCTION

Ghaziabad is Situated about 2.5 Km. from the Hindon River. On the North it is bound by the District of Merrut, on the South by that of Bulandshahr and Gautambudh Nagar, on the south-west by Delhi and on the East by the newly formed the district of Hapur.

Total No of Slum	79
Total City Population	16,36,068
Total Slum Population	4,08,448
Total Slums in City	79
Slums considered in DPR	1
Population of slum	16338
Percentage of Slum Population	Approx 4.00%

Selection Criteria for Rajiv Avas Yojna

DUDA Ghaziabad has selected the following 1 slums for Re-Development under RAJIV AVAS YOJNA.

1. Deendayalpur Nandgram.

- **The living condition of the slum is very unhygienic due to lack of Infrastructure facilities like roads, drainage and proper water supply.**
- **Location of slum in a fast growing locality would encourage mainstreaming the slum-dwellers into citywide network.**

SLUM LOCATION ON GIS MAP



RAJIV AVAS YOJNA

COMMUNITY PARTICIPATION



STATE URBAN DEVELOPMENT AGENCY (SUDA)

RAJIV AVAS YOJNA

SLUM PHOTOGRAPH



STATE URBAN DEVELOPMENT AGENCY (SUDA)

RAJIV AVAS YOJNA

SLUM PHOTOGRAPH



STATE URBAN DEVELOPMENT AGENCY (SUDA)

RAJIV AVAS YOJNA

HOUSE HOLD STATUS

S.No.	Name of Slum	Proposed Houses (Katcha +Semi Pakka)	Pakka house	Total Houshold in the slum
1.	Deendayal puri	560	2163	2723
	Total	560	2163	2723

CASTEWISE DETAILS

S. N.	SLUM NAME (SLUMS)	CASTE				PERCENTAGE (%)		
		OBC	SC	OTHER	TOTAL	OBC	SC	OTHER
1	Deendayalpuri	94	454	12	560	16.79	81.07	2.14
	Total	94	454	12	560	16.79	81.07	2.14

BENEFICIARIES ARE IDENTIFIED BY DUDA ON THE BASIS OF THEIR DWELLING UNIT STATUS AND BPL STATUS.

A WHOLESUM APPROACH HAS BEEN ADOPTED FOR PROVIDING INFRASTRUCTURE TO THE ENTIRE SLUM.

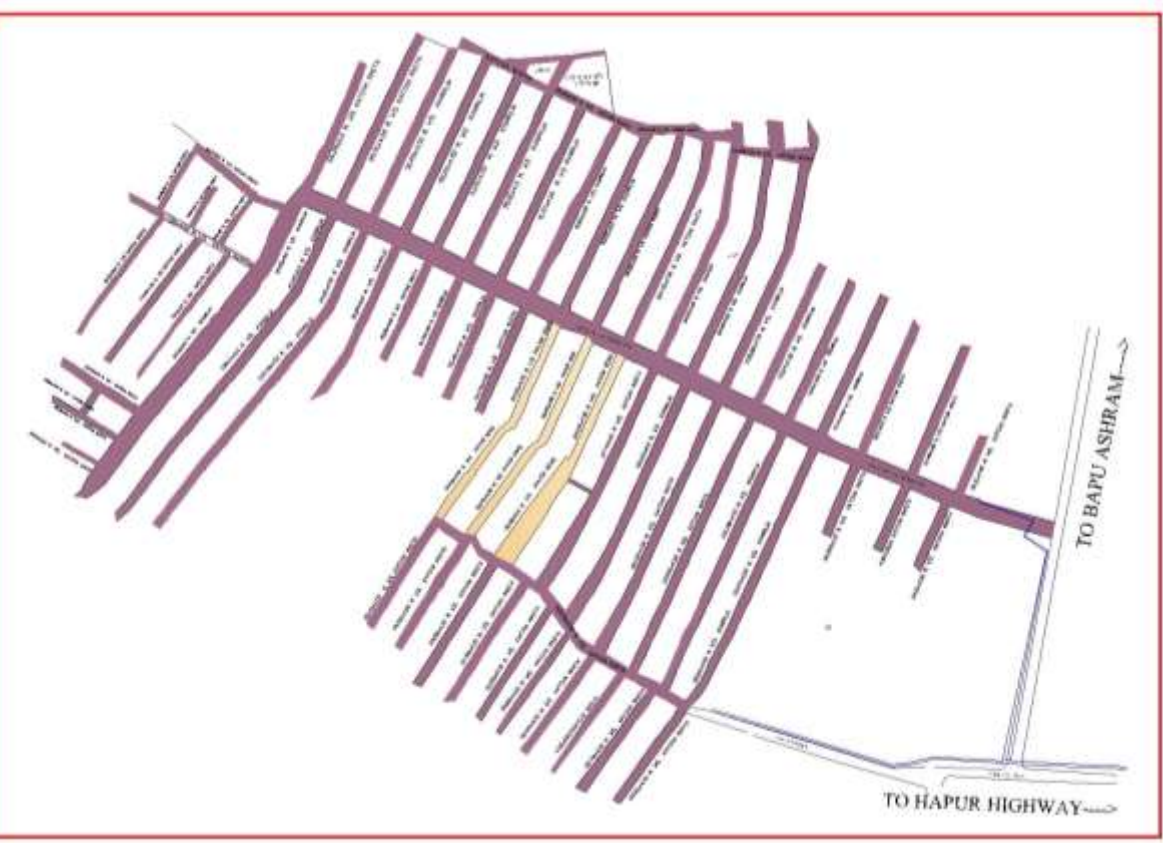
RAJIV AVAS YOJNA

LAY-OUT PLAN



RAJIV AVAS YOJNA

ROAD LAY-OUT PLAN



ROAD DETAIL

ROAD WIDTH	LENGTH	AREA (SQM.)
3.0 M WD ROAD	279.41 M.	670.58
4.5 M WD ROAD	3625.00 M.	10875.00
6.0 M WD ROAD	602.12 M.	2709.54
7.50 M WD ROAD	698.42 M.	3492.10

LEGEND





PROP. (NEW)	
EXT. ROAD	

RAJIV AVAS YOJNA

DRAINAGE PLAN

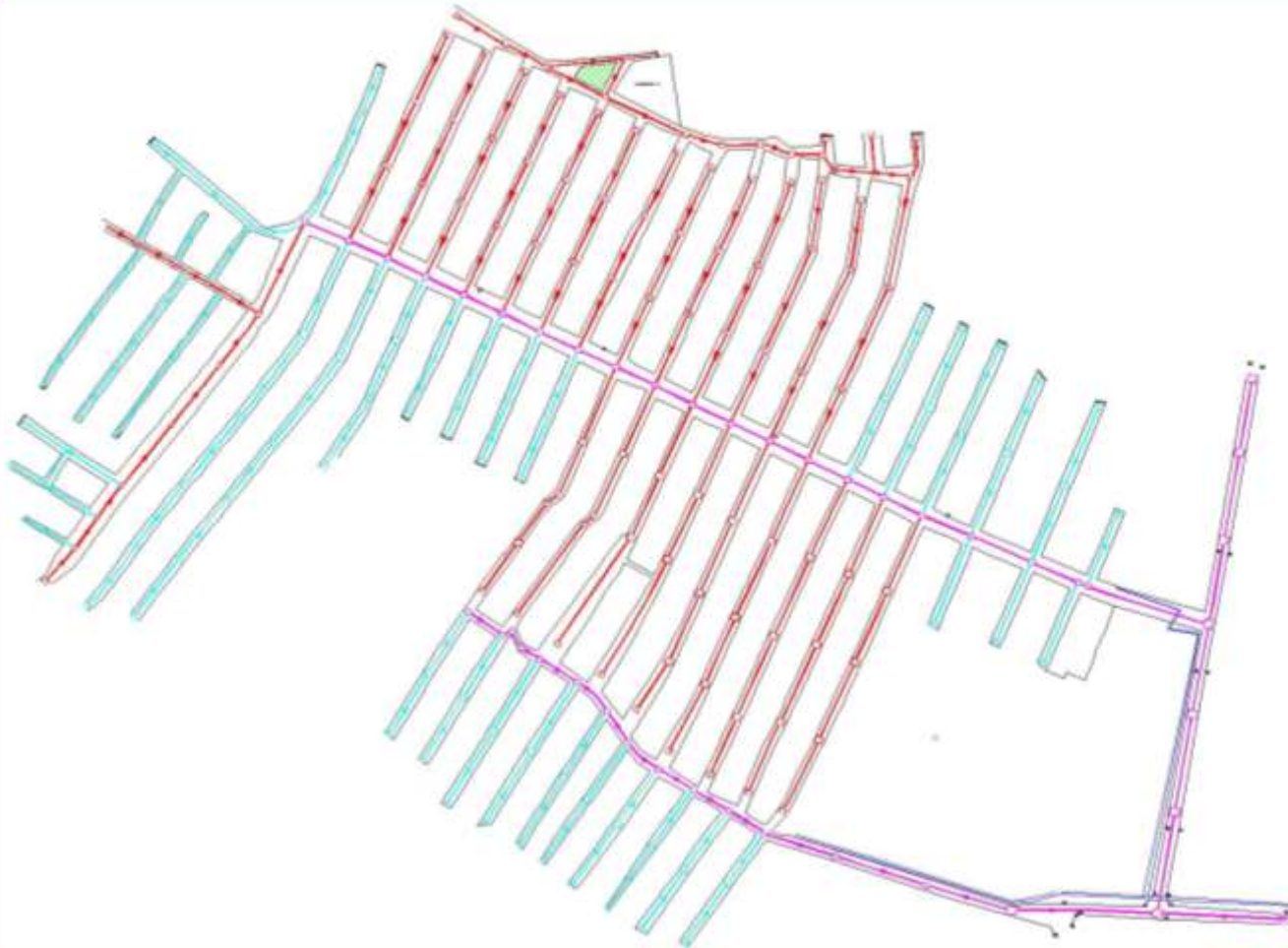
DRAIN LENGTH

SIZE	LENGTH
300 x 300 MM	3477.17 M.
300 x 450 MM	6800.66 M.
300 x 600 MM	879.05 M.
TOTAL	11156.88 M

SIZE	LEGEND
300X300	
300X450	
300X600	
EXT. DRAIN	
EXT. NALLAH	

RAJIV AVAS YOJNA

SEWERAGE PLAN



SEWERAGE

SIZE	LENGTH
300 MM DIA PIPE	1003.06 M.
200 MM DIA PIPE	3443.85 M.
150 MM DIA PIPE	2044.38 M.
MAINHOLE 900X900X3000	46 NOS
900X900X1500	48 NOS
900X900X1200	66 NOS
600X600X750	63 NOS

LEGEND	SIZE	SYMBOL
SEWER L I N E	300 mm Ø SWR PIPE	
SEWER L I N E	200 mm Ø SWR PIPE	
SEWER L I N E	150 mm Ø SWR PIPE	
MAIN HOLE	-600X600X750	
MAIN HOLE	-900X900X1200	
MAIN HOLE	-900X900X1500	
MAIN HOLE	-900X900X3000	

RAJIV AVAS YOJNA

WATER SUPPLY PLAN

WATER SUPPLY DETAIL

OHT (500 KL.)	1 NO.
160 MM DIA PVC PIPE	1003.06 M.
110 MM DIA PVC PIPE	3443.85 M.
90 MM DIA PVC PIPE	2044.38 M.

LEGEND

PROP. WATER LINE - 160 mm Ø
PROP. WATER LINE - 110 mm Ø
PROP. WATER LINE - 90 mm Ø
RISEING MAIN LINE



RAJIV AVAS YOJNA

ELECTIFICATION PLAN

ELECTRIC DETAIL

ELECTRIC POLE	9 NOS.
SOLAR LIGHT	02 NOS

LEGEND

EXIST. ELECTRIC POLE



PROP. ELECTRIC POLE

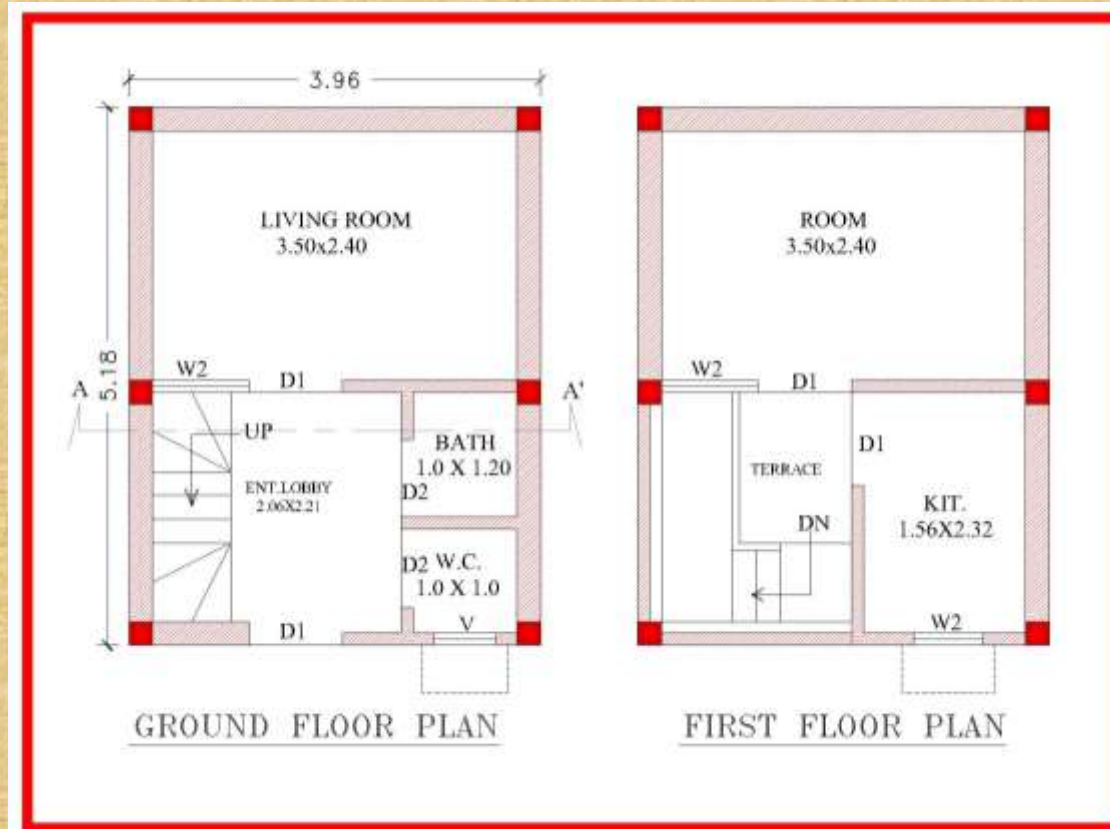


EXIST. TRANSFORMER



RAJIV AVAS YOJNA

MODEL - 1

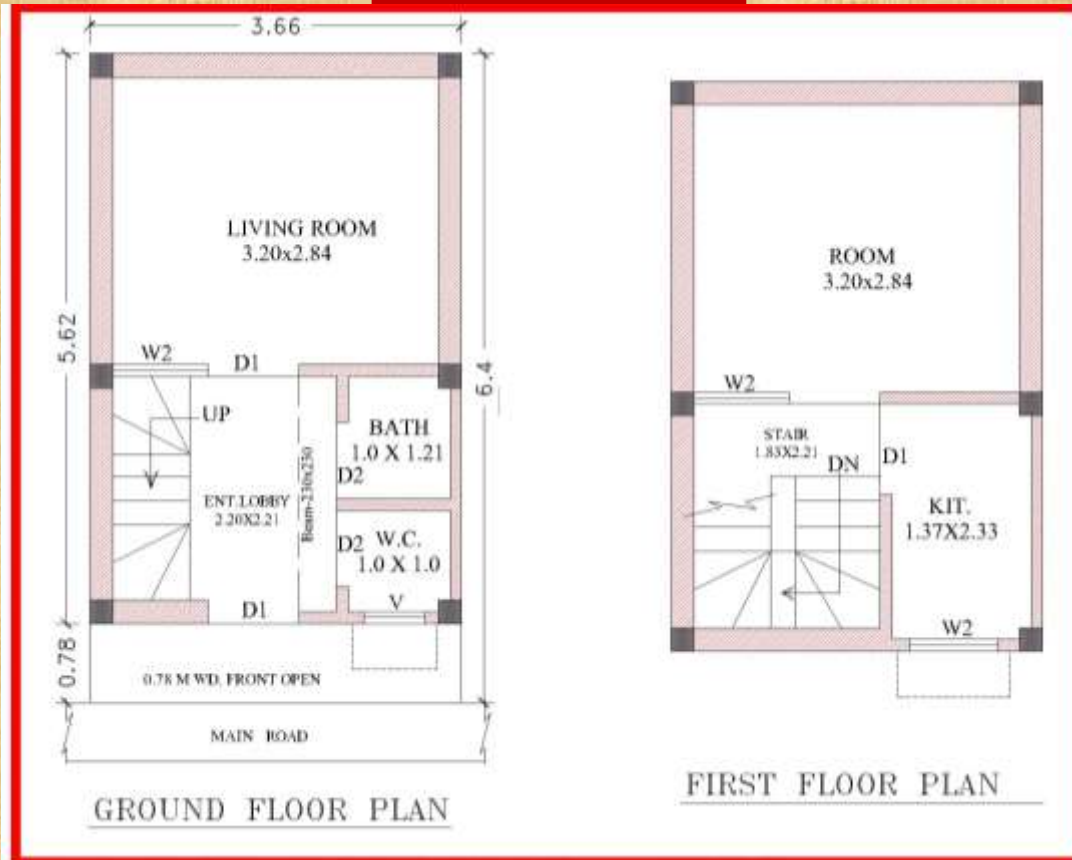


AREA DETAIL

BUILTUP AREA	41.02 Sqmt.
CARPET AREA	22.92 Sqmt.
CONSTRUCTION COST	Rs. 3,74,848.00

RAJIV AVAS YOJNA

MODEL-2



AREA DETAIL

BUILTUP AREA	41.14 Sqmt.
CARPET AREA	24.34 Sqmt.
CONSTRUCTION COST	Rs. 3,72,904.00

ANALYTICAL DETAILS

Ratio Housing : Infrastructure	Housing	Infrastructure
Amount (Rs in Lacs.)	2097.52	693.23
Percentage	75.16%	24.84%
Infrastructure cost per unit (Proposed Unit)	Rs.	123791.00

RAJIV AVAS YOJNA

FINANCIAL STATEMENT

S.no.	SCHEME COMPONENTS	PROJECT COST	CENTRAL SHARE (50%)	STATE SHARE (50%)
A	Housing unit 560	2097.52	1048.76	1048.76
B	Infrastructure			
1	Roads	257.50	128.75	128.75
2	Storm Water Drain	144.96	72.48	72.48
3	Sewerage System	107.45	53.73	53.73
4	Park Development	5.84	2.92	2.92
5	Community facility	30.64	15.32	15.32
6	Water Supply	121.67	60.84	60.84
7	Electrification	6.04	3.02	3.02
8	Rain Water Harvesting	0.83	0.42	0.42
9	Transit Accomodation (140 Nos.)	48.93	24.47	24.47
	Total Infrastructure (B)	693.23	346.62	346.62
	Total (A+B)	2790.75	1395.37	1395.37
	O & M cost @4%	111.63	55.81	55.81
	A&OE @ 2 %	55.81	00.00	55.81
	DPR Pre. @ 0.75%	20.93	00.00	20.93
	Labour Cess @ 1 %	27.91	00.00	27.91
	Centage @ 12.5 %	348.84	00.00	348.84
	Service Tex @ 4.05 %	113.03	00.00	113.03
	Grand Total	3468.90	1451.19	2017.71

STATE URBAN DEVELOPMENT AGENCY (SUDA)

THANK YOU