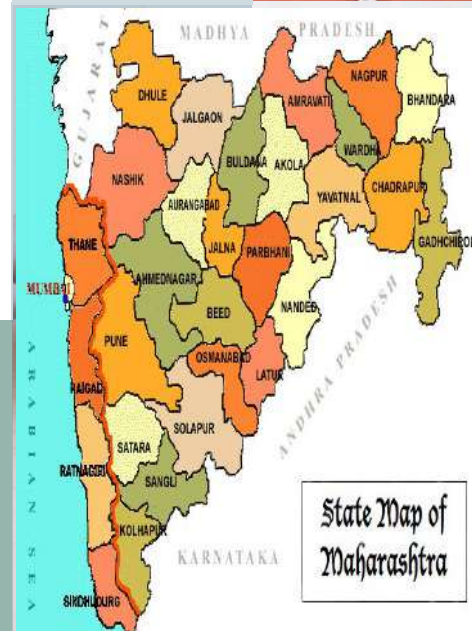


PASSION
D R I V E
N D E



Government of Maharashtra

CSMC meeting
30th January 2019



State Map of Maharashtra

Pradhan Mantri Awas Yojana (PMAY-U)



Proposal for 91 project under vertical 3 & 4

Presented to CSMC held on 30th January, 2019

Government of Maharashtra

PROGRESS OF PMAY (U)



Indicators	Current Status (No.)
▪ Cities Approved	
▪ Demand Survey Completed	
▪ Total Demand	
▪ Demand survey done by ULBs	
▪ Demand received through Common Service Centre and Online Application	
▪ Cases accepted/Pending	
▪ Whether HFAPoA Submitted	
▪ Whether AIP Submitted	
▪ Whether HFAPoA & AIP entered in MIS	
▪ SLTC/CLTC staffs approved vs. placed	
▪ Target of DUs in 2017-18	
▪ State Budgetary Provision for PMAY (U) in 2017-18	

STATUS OF MANDATORY CONDITIONS



Mandatory conditions	Current Status
▪Dispensing the need for separate Non Agricultural (NA) Permission	
▪Prepare/amend their Master Plans earmarking land for Affordable Housing	
▪Single-window, time bound clearance for layout approval and building permissions	
▪Adopt the approach of deemed building permission and layout approval on the basis of pre-approved lay outs and building plans.	
▪Amend or legislate existing rent laws on the lines of the Model Tenancy Act.	
▪Additional Floor Area Ratio (FAR)/Floor Space Index (FSI)/ Transferable Development Rights (TDR) and relaxed density norms.	

INTERFACE WITH MIS



Indicators	Current Status (No.)
▪ Survey entry made (%)	
▪ Projects approved:	
▪ Projects entered (7A/B/C/D)	
▪ DUs approved under BLC	
▪ Beneficiaries attached	
▪ BLC Houses geo-tagged	
▪ Total fund transferred through DBT (Rs. Lakhs)	
▪ <i>National Electronic Funds Transfer (NEFT)</i>	
▪ <i>PFMS/ DBT</i>	
▪ <i>Aadhar Payment Bridge (APB)</i>	

GLIMPSES OF PROGRESS

AHP – Shirdhone (MADA)



GLIMPSES OF PROGRESS

AHP – Shirdhone (MADA)



GLIMPSES OF PROGRESS

AHP – Shirdhone (MADA)



GLIMPSES OF PROGRESS

AHP - Khoni (MHADA)



B.No.1A



GLIMPSES OF PROGRESS

AHP - Amravati(MHADA)



GLIMPSES OF PROGRESS

AHP - Amravati(MHADA)



GLIMPSES OF PROGRESS

BLC - Amravati



GLIMPSES OF PROGRESS

BLC - Ichalkaranji



ABSTRACT of Proposals

Sl. No.	Description	No of DUs	EWS Project Cost	GoI Share (Rs. Lakhs)	GoM Share (Rs. Lakhs)	Implementing Agency Share (Rs. Lakhs)	Beneficiary Share (Rs. Lakhs)
1	86 BLC	7265	111340	25542	17028	542.03	68228.6
2	5 AHP	789	8749.88	1183.5	789	183.32	6778.38
3	Total 91 Projects	8054	120089.88	26725.5	17817	725.32	75006.98

ABSTRACT OF BLC PROJECTS

Sl. No.	Project Name	Component	No of DUs	EWS Project Cost (Rs. Lakhs)	Gol Share (Rs. Lakhs)	GoM Share (Rs. Lakhs)	Implementing Agency Share (Rs. Lakhs)	Beneficiary Share (Rs. Lakhs)	Sales Price(with out Govt. Grant & I/A Share) (Rs. Lakhs)	ULB /IA
1	Construction of 383 EWS Tenements at Newasa Dist. Ahmednagar	BLC	383	2622.02	574.50	383.00	0.00	1664.52	4.35	NEWASA MUNICIPAL COUNCIL
2	Construction of 242 EWS Tenements at Shevgaon Dist. Ahmednagar	BLC	242	1745.67	363.00	242.00	0.00	1140.67	4.71	SHEVGAON MUNICIPAL COUNCIL
3	Construction of 166 EWS Tenements at Barshi Takli Dist. Akola	BLC	166	967.41	249.00	166.00	0.00	552.41	3.33	BARSHI TAKLI MUNICIPAL COUNCIL
4	Construction of 242 EWS Tenements at Tilhara Dist. Akola	BLC	242	1434.25	363.00	242.00	0.00	829.25	3.43	TILHARA MUNICIPAL COUNCIL
5	Construction of 232 EWS Tenements at Balapur Dist. Akola	BLC	232	1365.90	348.00	232.00	0.00	785.90	3.39	BALAPUR MUNICIPAL COUNCIL
6	Construction of 83 EWS Tenements at Patur Dist. Akola	BLC	83	487.11	124.50	83.00	0.00	279.61	3.37	PATUR MUNICIPAL COUNCIL

ABSTRACT OF BLC PROJECTS

Sl. No.	Project Name	Component	No of DUs	EWS Project Cost (Rs. Lakhs)	Gol Share (Rs. Lakhs)	GoM Share (Rs. Lakhs)	Implementing Agency Share (Rs. Lakhs)	Beneficiary Share (Rs. Lakhs)	Sales Price(with out Govt. Grant & I/A Share) (Rs. Lakhs)	ULB /IA
7	Construction of 219 EWS Tenements at Daryapur Dist. Amravati	BLC	219	1294.85	328.50	219.00	0.00	747.35	3.41	DARYAPUR MUNICIPAL COUNCIL
8	Construction of 114 EWS Tenements at Dharani Nagar Dist. Amravati	BLC	114	678.70	171.00	114.00	0.00	393.70	3.45	DHARANI MUNICIPAL COUNCIL
9	Construction of 98 EWS Tenements at Tivasa Dist. Amravati	BLC	98	578.86	147.00	98.00	0.00	333.86	3.41	TIVASA MUNICIPAL COUNCIL
10	Construction of 731 EWS Tenements at Aurangabad Dist. Aurangabad	BLC	731	5979.71	1096.50	731.00	0.00	4152.21	5.68	AURANGABAD MUNICIPAL CORPORATION
11	Construction of 630 EWS Tenements at Phulambari Nagar Panchayat Dist. Aurangabad	BLC	630	4432.05	945.00	630.00	0.00	2857.05	4.54	PHULAMBARI MUNICIPAL COUNCIL
12	Construction of 200 EWS Tenements at Soyagaon Dist. Aurangabad	BLC	200	1440.60	300.00	200.00	0.00	940.60	4.70	SOYAGAON NAGAR PANCHAYAT

ABSTRACT OF BLC PROJECTS

Sl. No.	Project Name	Component	No of DUs	EWS Project Cost (Rs. Lakhs)	Gol Share (Rs. Lakhs)	GoM Share (Rs. Lakhs)	Implementing Agency Share (Rs. Lakhs)	Beneficiary Share (Rs. Lakhs)	Sales Price(with out Govt. Grant & I/A Share) (Rs. Lakhs)	ULB /IA
13	Construction of 307 EWS Tenements at Vaijapur Dist. Aurangabad	BLC	307	2214.54	460.50	307.00	0.00	1447.04	4.71	VAIJAPUR MUNICIPAL COUNCIL
14	Construction of 566 EWS Tenements at Majalgaon Dist. Beed	BLC	566	4201.70	849.00	566.00	0.00	2786.70	4.92	MAJALGAON NAGAR PARISHAD
15	Construction of 374 EWS Tenements at Kej nagar panchayat Dist. Beed	BLC	374	1904.41	561.00	374.00	0.00	969.41	2.59	KEJ NAGAR PANCHAYAT
16	Construction of 914 EWS Tenements at Georai Dist. Beed	BLC	914	4632.15	1371.00	914.00	0.00	2347.15	2.568	GEVRAI MUNICIPAL COUNCIL
17	Construction of 104 EWS Tenements at Vadani nagar panchayat Dist. Beed	BLC	104	534.87	156.00	104.00	0.00	274.87	2.64	WADWANI NAGAR PANCHAYAT
18	Construction of 75 EWS Tenements at Dharur Dist. Beed	BLC	75	381.60	112.50	75.00	0.00	194.10	2.59	DHARUR MUNICIPAL COUNCIL

ABSTRACT OF BLC PROJECTS

Sl. No.	Project Name	Component	No of DUs	EWS Project Cost (Rs. Lakhs)	Gol Share (Rs. Lakhs)	GoM Share (Rs. Lakhs)	Implementing Agency Share (Rs. Lakhs)	Beneficiary Share (Rs. Lakhs)	Sales Price(with out Govt. Grant & I/A Share) (Rs. Lakhs)	ULB /IA
19	Construction of 477 EWS Tenements at Sakoli Nagar Panchayat Dist. Bhandara	BLC	477	3230.48	715.50	477.00	0.00	2037.98	4.27	SAKOLI MUNICIPAL COUNCIL
20	Construction of 81 EWS Tenements at Mohadi nagar Panchayat Dist. Bhandara	BLC	81	473.21	121.50	81.00	0.00	270.71	3.34	MOHADI MUNICIPAL COUNCIL
21	Construction of 407 EWS Tenements at Lakhani nagar Panchayat Dist. Bhandara	BLC	407	3029.91	610.50	407.00	0.00	2012.41	4.94	LAKHANI NAGAR PANCHAYAT
22	Construction of 108 EWS Tenements at Shegaon Dist.Buldana	BLC	108	729.50	162.00	108.00	34.74	424.76	3.93	SHEGAON MUNICIPAL COUNCIL
23	Construction of 143 EWS Tenements at Chikali Dist.Buldana	BLC	143	972.67	214.50	143.00	46.32	568.85	3.978	CHIKHALI MUNICIPAL COUNCIL
24	Construction of 351 EWS Tenements at Jalgaon Jamod Dist. Buldana	BLC	351	2319.65	526.50	351.00	110.46	1331.69	3.79	JALGAON JAMOD MUNICIPAL COUNCIL

ABSTRACT OF BLC PROJECTS

Sl. No.	Project Name	Component	No of DUs	EWS Project Cost (Rs. Lakhs)	Gol Share (Rs. Lakhs)	GoM Share (Rs. Lakhs)	Implementing Agency Share (Rs. Lakhs)	Beneficiary Share (Rs. Lakhs)	Sales Price(with out Govt. Grant & I/A Share) (Rs. Lakhs)	ULB /IA
25	Construction of 183 EWS Tenements at Gond Pimari Dist. Chandrapur	BLC	183	1155.89	274.50	183.00	0.00	698.39	3.82	GOND PIMPRI MUNICIPAL COUNCIL
26	Construction of 664 EWS Tenements at Jivati Dist. Chandrapur	BLC	664	4043.25	996.00	664.00	0.00	2383.25	3.59	JIVATI MUNICIPAL COUNCIL
27	Construction of 58 EWS Tenements at Ballarpur Dist. Chandrapur	BLC	58	337.22	87.00	58.00	0.00	192.22	3.31	BALLARPUR MUNICIPAL COUNCIL
28	Construction of 127 EWS Tenements at Dondaicha Warwade Dist. Dhule	BLC	127	907.96	190.50	127.00	43.24	547.22	4.31	DONDAICHA WARWADE
29	Construction of 250 EWS Tenements at Shindkheda Dist. Dhule	BLC	250	1565.47	375.00	250.00	0.00	940.47	3.76	SHINDKHED NAGAR PANCHAYAT
30	Construction of 546 EWS Tenements at Sadak Devari Nagar Panchayat Dist. Gondia	BLC	546	3772.31	819.00	546.00	0.00	2407.31	4.41	DEORI MUNICIPAL COUNCIL

ABSTRACT OF BLC PROJECTS

Sl. No.	Project Name	Component	No of DUs	EWS Project Cost (Rs. Lakhs)	Gol Share (Rs. Lakhs)	GoM Share (Rs. Lakhs)	Implementing Agency Share (Rs. Lakhs)	Beneficiary Share (Rs. Lakhs)	Sales Price(with out Govt. Grant & I/A Share) (Rs. Lakhs)	ULB /IA
31	Construction of 240 EWS Tenements at Salkesha Nagar Panchayat Dist. Gondia	BLC	240	1663.20	360.00	240.00	0.00	1063.20	4.43	SALEKASA MUNICIPAL COUNCIL
32	Construction of 218 EWS Tenements at Arjuni Morgaon Dist. Gondia	BLC	218	1519.90	327.00	218.00	0.00	974.90	4.47	ARJUNI MORGAON MUNICIPAL COUNCIL
33	Construction of 377 EWS Tenements at Sadak Arjuni Nagar Panchayat Dist. Gondia	BLC	377	2246.38	565.50	377.00	0.00	1303.88	3.46	SADAK ARJUNI MUNICIPAL COUNCIL
34	Construction of 62 EWS Tenements at Jalgaon Dist. Jalgaon	BLC	62	442.71	93.00	62.00	21.08	266.63	4.30	JALGAON MUNICIPAL CORPORATION
35	Construction of 190 EWS Tenements at Jalgaon Dist. Jalgaon	BLC	190	1368.23	285.00	190.00	65.15	828.08	4.36	JALGAON MUNICIPAL CORPORATION
36	Construction of 350 EWS Tenements at Bhusawal Dist. Jalgaon	BLC	350	2098.25	525.00	350.00	0.00	1223.25	3.50	BHUSAWAL MUNICIPAL COUNCIL

ABSTRACT OF BLC PROJECTS

Sl. No.	Project Name	Component	No of DUs	EWS Project Cost (Rs. Lakhs)	Gol Share (Rs. Lakhs)	GoM Share (Rs. Lakhs)	Implementing Agency Share (Rs. Lakhs)	Beneficiary Share (Rs. Lakhs)	Sales Price(with out Govt. Grant & I/A Share) (Rs. Lakhs)	ULB /IA
37	Construction of 124 EWS Tenements at Bhadgaon Dist. Jalgaon	BLC	124	510.88	186.00	124.00	0.00	200.88	1.62	BHADGAON MUNICIPAL COUNCIL
38	Construction of 200 EWS Tenements at Faizpur Dist. Jalgaon	BLC	200	1243.97	300.00	200.00	0.00	743.97	3.72	FAIZPUR MUNICIPAL COUNCIL
39	Construction of 781 EWS Tenements at Jalana Dist. Jalana	BLC	781	5746.91	1171.50	781.00	0.00	3794.41	4.86	JALANA MUNICIPAL COUNCIL
40	Construction of 11 EWS Tenements at Panhala Dist.Kolhapur	BLC	11	65.09	16.50	11.00	0.00	37.59	3.42	PANHALA MUNICIPAL COUNCIL
41	Construction of 55 EWS Tenements at Jaisingur Dist.Kolhapur	BLC	55	333.39	82.50	55.00	0.00	195.89	3.56	JAYSINGPUR MUNICIPAL COUNCIL
42	Construction of 50 EWS Tenements at Hupari Nagar Panchayat Dist.Kolhapur	BLC	50	302.05	75.00	50.00	0.00	177.05	3.54	HUPARI NAGAR PARISHAD

ABSTRACT OF BLC PROJECTS

Sl. No.	Project Name	Component	No of DUs	EWS Project Cost (Rs. Lakhs)	Gol Share (Rs. Lakhs)	GoM Share (Rs. Lakhs)	Implementing Agency Share (Rs. Lakhs)	Beneficiary Share (Rs. Lakhs)	Sales Price(with out Govt. Grant & I/A Share) (Rs. Lakhs)	ULB /IA
43	Construction of 30 EWS Tenements at Malkapur Dist. Kolhapur	BLC	30	176.69	45.00	30.00	0.00	101.69	3.39	MALKAPUR MUNICIPAL COUNCIL
44	Construction of 68 EWS Tenements at Kagal Dist. Kolhapur	BLC	68	473.47	102.00	68.00	9.29	294.18	4.33	KAGAL MUNICIPAL COUNCIL
45	Construction of 422 EWS Tenements at Latur Dist. Latur	BLC	422	2479.65	633.00	422.00	0.00	1424.65	3.38	LATUR MUNICIPAL CORPORATION
46	Construction of 88 EWS Tenements at Katol Dist. Nagpur	BLC	88	594.87	132.00	88.00	28.33	346.54	3.94	KATOL MUNICIPAL COUNCIL
47	Construction of 154 EWS Tenements at Umred Dist. Nagpur	BLC	154	897.64	231.00	154.00	0.00	512.64	3.33	UMRED MUNICIPAL COUNCIL
48	Construction of 242 EWS Tenements at Kalmeshwar Dist. Nagpur	BLC	242	1421.77	363.00	242.00	0.00	816.77	3.38	KALMESHWAR BRAMHANI MUNICIPAL COUCNIL

ABSTRACT OF BLC PROJECTS

Sl. No.	Project Name	Component	No of DUs	EWS Project Cost (Rs. Lakhs)	Gol Share (Rs. Lakhs)	GoM Share (Rs. Lakhs)	Implementing Agency Share (Rs. Lakhs)	Beneficiary Share (Rs. Lakhs)	Sales Price(with out Govt. Grant & I/A Share) (Rs. Lakhs)	ULB /IA
49	Construction of 114 EWS Tenements at Khapa Dist. Nagpur	BLC	114	662.80	171.00	114.00	0.00	377.80	3.31	KHAPA MUNICIPAL COUNCIL
50	Construction of 35 EWS Tenements at Kuhi Nagar Dist. Nagpur	BLC	35	204.63	52.50	35.00	0.00	117.13	3.35	KUHI NAGAR PANCHAYAT
51	Construction of 54 EWS Tenements at Mohpa Dist. Nagpur	BLC	54	319.64	81.00	54.00	0.00	184.64	3.42	MOHPA NAGAR PARISHAD
52	Construction of 41 EWS Tenements at Bhagur Dist. Akola	BLC	41	247.36	61.50	41.00	0.00	144.86	3.53	BHAGUR MUNICIPAL COUNCIL
53	Construction of 51 EWS Tenements at Nandgaon Dist. Nashik	BLC	51	324.87	76.50	51.00	0.00	197.37	3.87	NANDGAON MUNICIPAL COUNCIL
54	Construction of 110 EWS Tenements at Murum Dist. Osmanabad	BLC	110	757.90	165.00	110.00	0.00	482.90	4.39	MURUM MUNICIPAL COUNCIL

ABSTRACT OF BLC PROJECTS

Sl. No.	Project Name	Component	No of DUs	EWS Project Cost (Rs. Lakhs)	Gol Share (Rs. Lakhs)	GoM Share (Rs. Lakhs)	Implementing Agency Share (Rs. Lakhs)	Beneficiary Share (Rs. Lakhs)	Sales Price(with out Govt. Grant & I/A Share) (Rs. Lakhs)	ULB /IA
55	Construction of 413 EWS Tenements at Osmanabad Dist. Osmanabad	BLC	413	2722.66	619.50	413.00	0.00	1690.16	4.09	OSMANABAD MUNICIPAL COUNCIL
56	Construction of 230 EWS Tenements at Tuljapur Dist. Osmanabad	BLC	230	1503.00	345.00	230.00	0.00	928.00	4.03	TULJAPUR MUNICIPAL COUNCIL
57	Construction of 450 EWS Tenements at Pathari Dist. Parbhani	BLC	450	2967.30	675.00	450.00	0.00	1842.30	4.09	PATHRI MUNICIPAL COUNCIL
58	Construction of 111 EWS Tenements at Junnar Dist. Pune	BLC	111	814.04	166.50	111.00	38.76	497.78	4.48	JUNNAR MUNICIPAL COUNCIL
59	Construction of 51 EWS Tenements at Rajguru Nagar Dist. Pune	BLC	51	385.23	76.50	51.00	18.34	239.39	4.69	RAJGURUNAGAR MUNICIPAL COUNCIL
60	Construction of 72 EWS Tenements at Bhore Dist. Pune	BLC	72	545.83	108.00	72.00	25.99	339.84	4.72	BHORE MUNICIPAL COUNCIL

ABSTRACT OF BLC PROJECTS

Sl. No.	Project Name	Component	No of DUs	EWS Project Cost (Rs. Lakhs)	Gol Share (Rs. Lakhs)	GoM Share (Rs. Lakhs)	Implementing Agency Share (Rs. Lakhs)	Beneficiary Share (Rs. Lakhs)	Sales Price(with out Govt. Grant & I/A Share) (Rs. Lakhs)	ULB /IA
61	Construction of 29 EWS Tenements at Pen Dist. Raigad	BLC	29	251.83	43.50	29.00	22.89	156.44	5.39	PEN MUNICIPAL COUNCIL
62	Construction of 43 EWS Tenements at Shrivardhan Dist. Raigad	BLC	43	372.36	64.50	43.00	33.85	231.01	5.37	SHRIVARDHAN MUNICIPAL COUNCIL
63	Construction of 71 EWS Tenements at Ratnagiri Dist. Ratnagiri	BLC	71	506.15	106.50	71.00	0.00	328.65	4.629	RATNAGIRI MUNICIPAL COUNCIL
64	Construction of 40 EWS Tenements at Shirala Nagar Panchayat Dist.Sangali	BLC	40	380.33	60.00	40.00	0.00	280.33	7.01	SHIRALA NAGAR PANCHYAT
65	Construction of 49 EWS Tenements at Tasgaon Dist. Sangali	BLC	49	293.49	73.50	49.00	0.00	170.99	3.49	TASGAON MUNICIPAL COUNCIL
66	Construction of 432 EWS Tenements at Ashta Dist.Sangali	BLC	432	2551.41	648.00	432.00	0.00	1471.41	3.41	ASHTA MUNICIPAL COUNCIL

ABSTRACT OF BLC PROJECTS

Sl. No.	Project Name	Component	No of DUs	EWS Project Cost (Rs. Lakhs)	Gol Share (Rs. Lakhs)	GoM Share (Rs. Lakhs)	Implementing Agency Share (Rs. Lakhs)	Beneficiary Share (Rs. Lakhs)	Sales Price(with out Govt. Grant & I/A Share) (Rs. Lakhs)	ULB /IA
67	Construction of 80 EWS Tenements at Sangli Dist. Sangli	BLC	80	722.01	120.00	80.00	0.00	522.01	6.53	SANGLI MUNICIPAL CORPORATION
68	Construction of 61 EWS Tenements at Kadegaon Nagar Panchayat Dist.Sangali	BLC	61	360.33	91.50	61.00	0.00	207.83	3.41	KADEGAON MUNICIPAL COUNCIL
69	Construction of 85 EWS Tenements at phaltan Dist. Satara	BLC	85	555.22	127.50	85.00	0.00	342.72	4.03	PHALTAN MUNICIPAL COUNCIL
70	Construction of 76 EWS Tenements at Mhaswad Dist. Satara	BLC	76	527.44	114.00	76.00	0.00	337.44	4.44	MHASWAD MUNICIPAL COUNCIL
71	Construction of 125 EWS Tenements at Pune Phaltan Dist. Satara	BLC	125	1115.63	187.50	125.00	0.00	803.13	6.43	PHALTAN MUNICIPAL COUNCIL
72	Construction of 35 EWS Tenements at Waduj Nagar Panchayat Dist. Satara	BLC	35	234.50	52.50	35.00	0.00	147.00	4.20	WADUJ MUNICIPAL COUNCIL

ABSTRACT OF BLC PROJECTS

Sl. No.	Project Name	Component	No of DUs	EWS Project Cost (Rs. Lakhs)	Gol Share (Rs. Lakhs)	GoM Share (Rs. Lakhs)	Implementing Agency Share (Rs. Lakhs)	Beneficiary Share (Rs. Lakhs)	Sales Price(with out Govt. Grant & I/A Share) (Rs. Lakhs)	ULB /IA
73	Construction of 43 EWS Tenements at Patan Dist. Satara	BLC	43	258.93	64.50	43.00	0.00	151.43	3.52	PATAN MUNICIPAL COUNCIL
74	Construction of 28 EWS Tenements at Patan Nagar Panchayat Dist. Satara	BLC	28	168.66	42.00	28.00	0.00	98.66	3.52	PATAN MUNICIPAL COUNCIL
75	Construction of 71 EWS Tenements at Satara Dist. Satara	BLC	71	413.94	106.50	71.00	0.00	236.44	3.33	SATARA MUNICIPAL COUNCIL
76	Construction of 31 EWS Tenements at Lonand Nagar Panchayat Dist. Satara	BLC	31	181.37	46.50	31.00	0.00	103.87	3.35	LONAND MUNICIPAL COUNCIL
77	Construction of 54 EWS Tenements at Malkapur Dist. Satara	BLC	54	318.50	81.00	54.00	0.00	183.50	3.40	MALKHAPUR MUNICIPAL COUNCIL
78	Construction of 137 EWS Tenements at Sawantwadi Dist. Sindhudurg	BLC	137	1023.73	205.50	137.00	0.00	681.23	4.97	SAWANTWADI MUNICIPAL COUNCIL

ABSTRACT OF BLC PROJECTS

Sl. No.	Project Name	Component	No of DUs	EWS Project Cost (Rs. Lakhs)	Gol Share (Rs. Lakhs)	GoM Share (Rs. Lakhs)	Implementing Agency Share (Rs. Lakhs)	Beneficiary Share (Rs. Lakhs)	Sales Price(with out Govt. Grant & I/A Share) (Rs. Lakhs)	ULB /IA
79	Construction of 104 EWS Tenements at akkalkot Dist. Solapur	BLC	104	703.14	156.00	104.00	13.79	429.35	4.13	AKKALKOT MUNICIPAL COUNCIL
80	Construction of 221 EWS Tenements at Malshiras Nagar Panchayat Dist. Akola	BLC	221	1377.96	331.50	221.00	0.00	825.46	3.735	MALSHIRAS MUNICIPAL COUNCIL
81	Construction 99 EWS Tenements at Mhadha Nagar Panchayat Dist. Solapur	BLC	99	585.81	148.50	99.00	0.00	338.31	3.42	MADHA MUNICIPAL COUNCIL
82	Construction of 182 EWS Tenements at Sangola Dist. Solapur	BLC	182	1255.89	273.00	182.00	24.62	776.27	4.27	SANGOLE MUNICIPAL COUNCIL
83	Construction of 86 EWS Tenements at Mahol Nagar Panchayat Dist. Akola	BLC	86	504.55	129.00	86.00	0.00	289.55	3.37	MOHOL MUNICIPAL COUNCIL
84	Construction of 24 EWS Tenements at Murbad Dist. Thane	BLC	24	108.74	36.00	24.00	5.18	43.56	1.82	MURBAD NAGAR PANCHAYAT

ABSTRACT OF BLC PROJECTS

Sl. No.	Project Name	Component	No of DUs	EWS Project Cost (Rs. Lakhs)	Gol Share (Rs. Lakhs)	GoM Share (Rs. Lakhs)	Implementing Agency Share (Rs. Lakhs)	Beneficiary Share (Rs. Lakhs)	Sales Price(with out Govt. Grant & I/A Share) (Rs. Lakhs)	ULB /IA
85	Construction of 249 EWS Tenements at Seloo Nagar Panchayat Dist. Wardha	BLC	249	1487.43	373.50	249.00	0.00	864.93	3.47	SELOO NAGAR PANCHAYAT
86	Construction of 104 EWS Tenements at Malegaon Nagar Panchayat Dist. Washim	BLC	104	607.07	156.00	104.00	0.00	347.07	3.34	MALEGAON NAGAR PANCHAYAT

ABSTRACT OF AHP PROJECTS

Sl. No.	ULB /IA	EWS DUs	Land Ownership	GoI Share (Rs. Lacs)	GoM Share (Rs. Lacs)	I/A Share (Rs. Lacs)	Beneficiary Share (Rs. Lacs)	EWS Project Cost (Rs. Lacs)	EWS Unit Cost (Rs. Lacs)	Benef share /Unit (Rs. Lacs)
1	MHAD Nashik Board	175	NASHIK BOARD , MHADA	262.50	175.00	0.00	1590.29	2027.79	9.06	6.56
2	Nagpur Improvement Trust	190	Nagpur Improvement Trust	285.00	190.00	0.00	1566.29	2041.29	10.74	8.24
3	MHAD Nashik Board	42	NASHIK BOARD , MHADA	63.00	42.00	0.00	348.96	453.96	10.808	8.308
4	Phaltan Municipal Council	256	Phaltan Municipal Council	384.00	256.00	0.00	1995.52	2634.52	8.19	5.69
5	Pune Housing and area Development Board.	126EWS + 112 LIG	State Government Land Area 8000 Sq. M is in paper possession of MHADA physical possession will be handed over after approval of SLSMC	189.00	126.00	0.00	1294.02	1609.02	10.01	7.6

Construction of 175 EWS t/s and 33 shops Adagaon, Nashik City at Nashik

Rs. In Lakhs

Name of Scheme	Name of City / Impl. Agency	No. Of Dus		Project Cost				Gol Share	GoM Share	I/A Share	Beneficiary Share
				Housing	Infra	Others	Total				
Construction of 175 EWS t/s and 33 shops Adagaon, Nashik City at Nashik	MHADA Nashik Board	EWS	175	1584.83	136.28	306.68	2027.79	262.50	175.00	0.00	1590.31
		SHOPS	33.00	68.10	5.86	27.81	101.77				
							0.00				
							0.00				
		Total	208.00	1652.93	142.14	334.49	2129.56				

Construction of 175 EWS t/s and 33 shops Adagaon, Nashik City at Nashik

PROJECT INFORMATION

Carpet Area sq.mt. Of EWS	29.1	Sale Price (with out Govt. Grant) in (Rs .Lakhs)					9.06
Area of Land:(in Ha)		Sale Price (with Govt. Grant) In (Rs. Lakhs)					6.56
Ownership of Land:	MHADA Nashik Board						
Reservation on Land:	Residential	Sale Price Rate/Sq.m. of CA in (Rs.)				31134	
No. of EWS beneficiaries covered in the project:	Gen	SC	ST	OBC	Other	Total	Minority
	88	19	9	0	59	175	
Whether the provisions of Civic infrastructure has been made as per applicable State norms/ CPHEEO norms/ IS code / NBC?							
i) Water Supply (Yes / No)		Yes					
ii) Sewerage (Yes / No)		Yes					
iii) Road (Yes / No)		Yes					
iv) Storm water drain (Yes / No)		Yes					
v) External Electrification (Yes / No)		Yes					

Construction of 175 EWS t/s and 33 shops Adagaon, Nashik City at Nashik

Observations:

1. The said project was proposed under SLSCMC dated 18/08/2018. SLSCMC directed Nashik Board MHADA to review the sale price of the EWS units as the sale prices were seemed to be higher. Nashik Board MHADA with reference to letter No 6210/2018 has revised the proposal. As per the revised proposal the said price of the unit cost is 11.58 Lakhs per Unit.

It is recommended to submit the DPR to CSMC for approval

Search Google Maps

Sign in

Kulswamini Misal

Bright Farms

Labhade Niwas

Ras Bihari English
Medium Primary School

Proposed Gut No. 602/02 At
Adgaon Site

Salsa Resort
साल्सा रिसॉर्ट

Suryamukhi
Hanuman Mandir

Mhasrul Adgaon Road

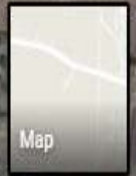
Mhasrul Adgaon Road

Adgaon Rd

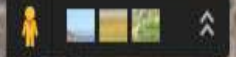
महसलूळ आडगाव रस्ता

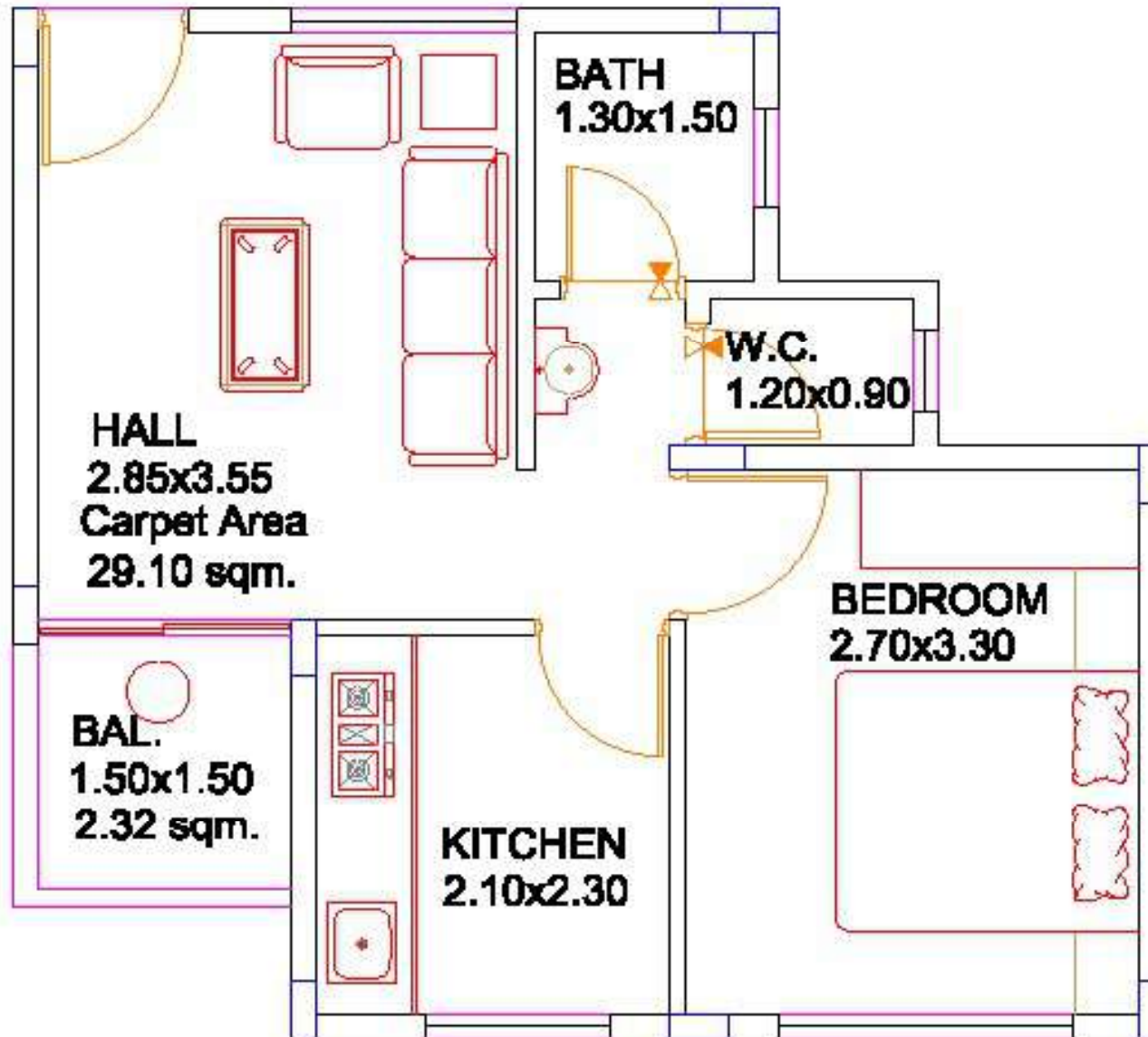
Adgaon Rd

Google



3D





PRESENTATION DRAWING	FOR HOME HOLDING AND AREA DEVELOPMENT BOARD (A. MINDA UNIT)	ARCHITECT	DATE
TYPICAL FLOOR PLAN		RUTESH D. KUMBHARLA, M.A.C.A.A.	MAY-18 2024
SCALE:		PLD-10000_10000/1000000 C:\pdd\10000_10000\1000000	DELT 11-11-11 10:00 AM DCELIP-11.11.11

Photo of proposed site



Construction of 190 EWS DU's under PMAY component AHP at.Khasara no. 146/3, 146/4, 146/5 141/1 P.H. No. 15 moje Bhilgaon Taluka Kamptee Dist. Nagpur

PROJECT INFORMATION

Rs. In Lakhs

Name of Scheme	Name of City / Impl. Agency	No. Of Dus		Project Cost				Gol Share	GoM Share	I/A Share	Beneficiary Share
				Housing	Infra	Others	Total				
Construction of 190 EWS DU's under PMAY component AHP at.Khasara no. 146/3, 146/4, 146/5 141/1 P.H. No. 15 moje Bhilgaon Taluka	Nagpur Improvement Trust	EWS	190	1529.96	227.04	284.29	2041.29	285.00	190.00	0.00	1566.29
							0.00				
							0.00				
							0.00				
		Total	190.00	1529.96	227.04	284.29	2041.29				

Construction of 190 EWS DU's under PMAY component AHP at.Khasara no. 146/3, 146/4, 146/5 141/1 P.H. No. 15 moje Bhilgaon Taluka Kamptee Dist. Nagpur

PROJECT INFORMATION

Carpet Area sq.mt. Of EWS	29.31	Sale Price (with out Govt. Grant) in (Rs .Lakhs)					10.74
Area of Land:(in Ha)		Sale Price (with Govt. Grant) In (Rs. Lakhs)					8.24
Ownership of Land:	Nagpur Improvement Trust						
Reservation on Land:	Residential	Sale Price Rate/Sq.m. of CA in (Rs.)				36643	
No. of EWS beneficiaries covered in the project:	Gen	SC	ST	OBC	Other	Total	Minority
						190	
Whether the provisions of Civic infrastructure has been made as per applicable State norms/ CPHEEO norms/ IS code / NBC?							
i) Water Supply (Yes / No)		Yes					
ii) Sewerage (Yes / No)		Yes					
iii) Road (Yes / No)		Yes					
iv) Storm water drain (Yes / No)		Yes					
v) External Electrification (Yes / No)		Yes					
vi) Solid waste management (Yes / No)		Yes					
vii) Any other, Specify)							

Construction of 190 EWS DU's under PMAY component AHP at.Khasara no. 146/3, 146/4, 146/5 141/1 P.H. No. 15 moje Bhilgaon Taluka Kamptee Dist. Nagpur

Observations:

1. Land under project is transferred to NIT by Collector Nagpur in November 2017
2. Annexure 7B (GoM extended format), is incomplete. Executive summary, DP plan not attached. NIT to take corrective action.
3. Reservation Details of the said land on Khasra No 146/3, 146/4, 146/5, 146-141/1 is not mentioned. NIT to take corrective action.

It is recommended to submit the DPR to CSMC for approval

Construction of 42 EWS on S.No. 49/12 Makhamalabad, Nashik City at Nashik

Rs. In Lakhs

Name of Scheme	Name of City / Impl. Agency	No. Of Dus		Project Cost				Gol Share	GoM Share	I/A Share	Beneficiary Share
				Housing	Infra	Others	Total				
Construction of 42 EWS on S.No. 49/12 Makhamalabad, Nashik City at Nashik	MHADA Nashik Board	EWS	42	333.04	37.02	83.90	453.96	63.00	42.00	0.00	348.96
		LIG					0.00				
		MIG					0.00				
		HIG					0.00				
		Total	42.00	333.04	37.02	83.90	453.96				

Construction of 42 EWS on S.No. 49/12 Makhamalabad, Nashik City at Nashik

PROJECT INFORMATION

Carpet Area sq.mt. Of EWS	29.9	Sale Price (with out Govt. Grant) in (Rs .Lakhs)					10.808
Area of Land:(in Ha)		Sale Price (with Govt. Grant) In (Rs. Lakhs)					8.308
Ownership of Land:	MHADA Nashik Board						
Reservation on Land:	Residential	Sale Price Rate/Sq.m. of CA in (Rs.)				36147	
No. of EWS beneficiaries covered in the project:	Gen	SC	ST	OBC	Other	Total	Minority
	21	4	2	0	15	42	
Whether the provisions of Civic infrastructure has been made as per applicable State norms/ CPHEEO norms/ IS code / NBC?							
i) Water Supply (Yes / No)		Yes					
ii) Sewerage (Yes / No)		Yes					
iii) Road (Yes / No)		Yes					
iv) Storm water drain (Yes / No)		Yes					
v) External Electrification (Yes / No)		Yes					

Construction of 42 EWS on S.No. 49/12 Makhamalabad, Nashik City at Nashik

Observations:

1. The said project was proposed under SLSMC meeting held on Dated 18/08/2018. SLSMC directed Nashik Board MHADA to review the sale price of the EWS units as the sale prices were seemed to be higher. Nashik Board MHADA with reference to letter No 6210/2018 has revised the proposal. As per the revised proposal the said price of the unit cost is 10.80 Lakhs per Unit.
2. The DPR is of 42 Dus and the state reccoomends the project for approval.

It is recommended to submit the DPR to CSMC for approval.



Sign in

Leelavati Hospital
लीलावती
हॉस्पिटल



**Proposed Scheme at
S. No.49/12,
Makhamalabad**

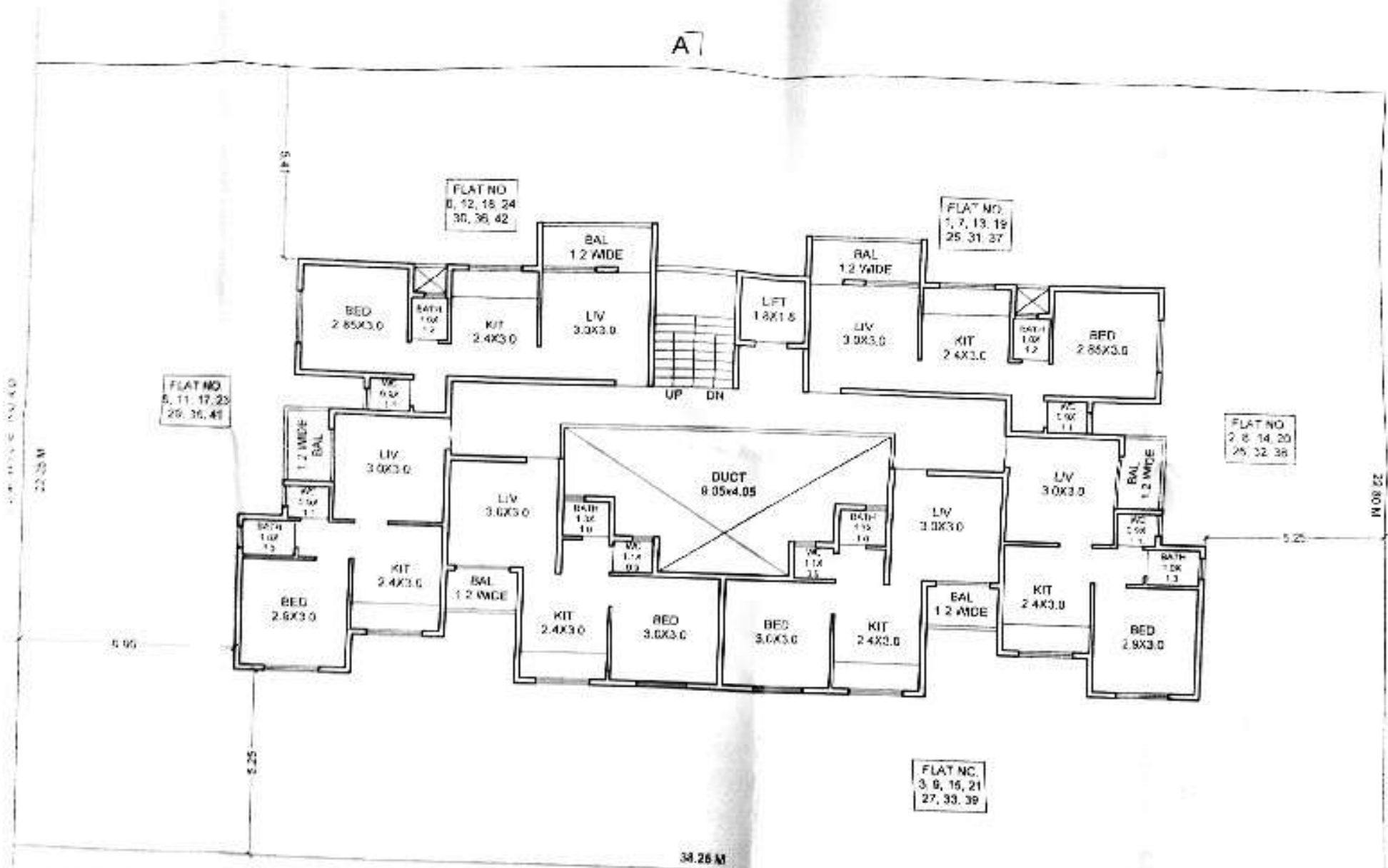


Omkar motors

Makhamalabad Rd

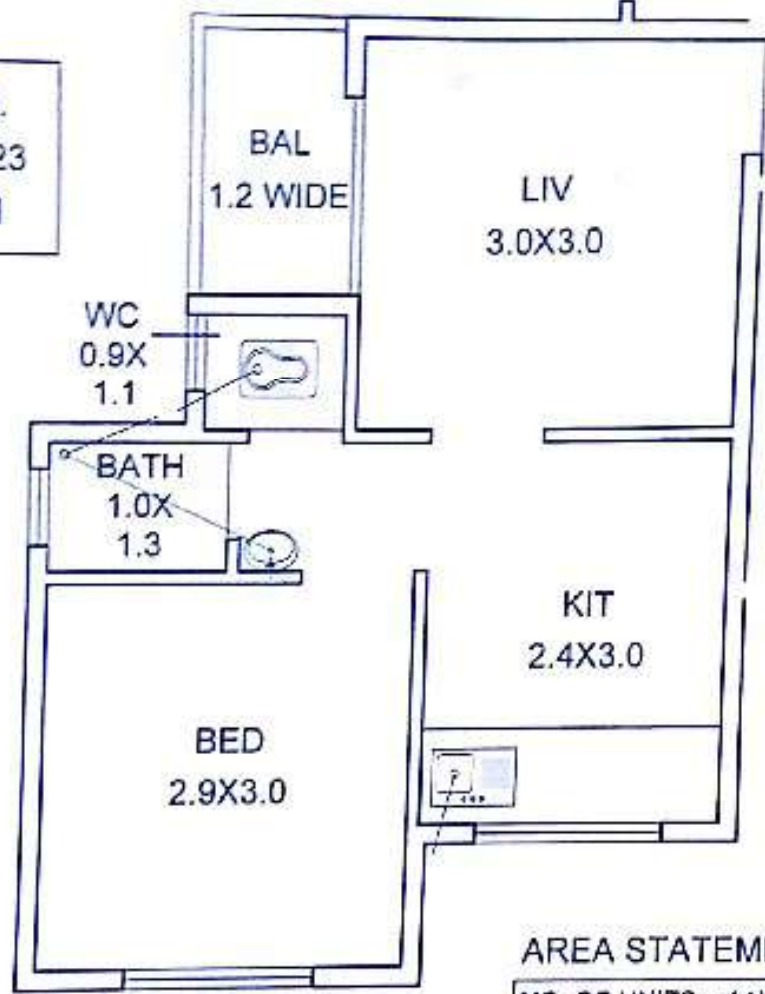
Vitthal Co Oprative
Housing Society...





TYPICAL FIRST TO SEVENTH FLOOR

FLAT NO.
5, 11, 17, 23
29, 35, 41



PLAN OF SINGLE UNIT

AREA STATEMENT

NO. OF UNITS = 14/42

AREA OF EACH UNIT:
 CARPET AREA = 29.90 SQ.M
 BALCONY = 2.31 SQ.M
 SUPER B/U AREA = 8.97 SQ.M
 TOTAL AREA OF EACH UNIT
 41.18 SQ.M

PROPOSED RESIDENTIAL BUILDING
FOR EWS HOUSING UNDER PMAY
ON S.NO. 49/8 (PART) AND
S. NO. 49/12 OF MAKHAMALABAD
SHIWAR, NASHIK, FOR
MHADA

	SIGNATURE
CHIEF OFFICER	
EXECUTIVE ENGINEER	
DEPUTY ENGINEER	
SECTIONAL / ASST. ENGINEER	
JUNIOR ARCHITECT / ASSISTANT	

OWNER
NASHIK HOUSING & AREA DEV. BOARD
GRIHA NIRMAN BHAVAN (2nd FLOOR)
RAM GANESH GADKARI CHOWK, NASHIK

STRUCTURAL ENGINEER'S SIGN

ARCHITECT'S SIGN

AGE NO.	DWG NO.	DATE	SCALE	NO. OF SHEETS	TOTAL SHEETS	NO. OF SHEETS	NO. OF SHEETS
3	7	12/01/17	1:50	1	1	1	1

TITLE: FLOOR PLANS, SECTION AREA STATEMENTS

DES. BY
AR. BIPIN BONDE & AR. HEMANT DEORE
B.P.R.C., A.I.I.A.

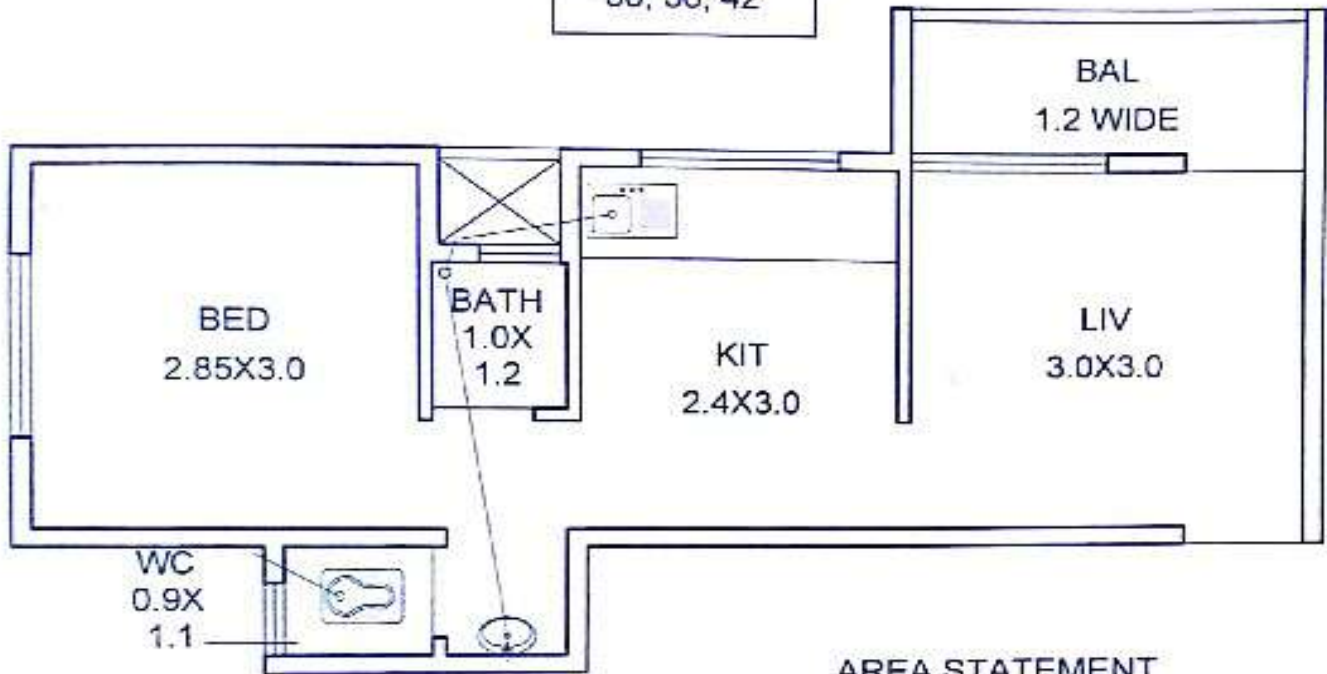


**BIPIN BONDE
HEMANT DEORE**

ARCHITECTURAL CONSULTANTS

WRA, VILLA SHIVRI COLONY,
DEALGE ROAD NASHIK, 422 002

FLAT NO.
6, 12, 18, 24
30, 36, 42



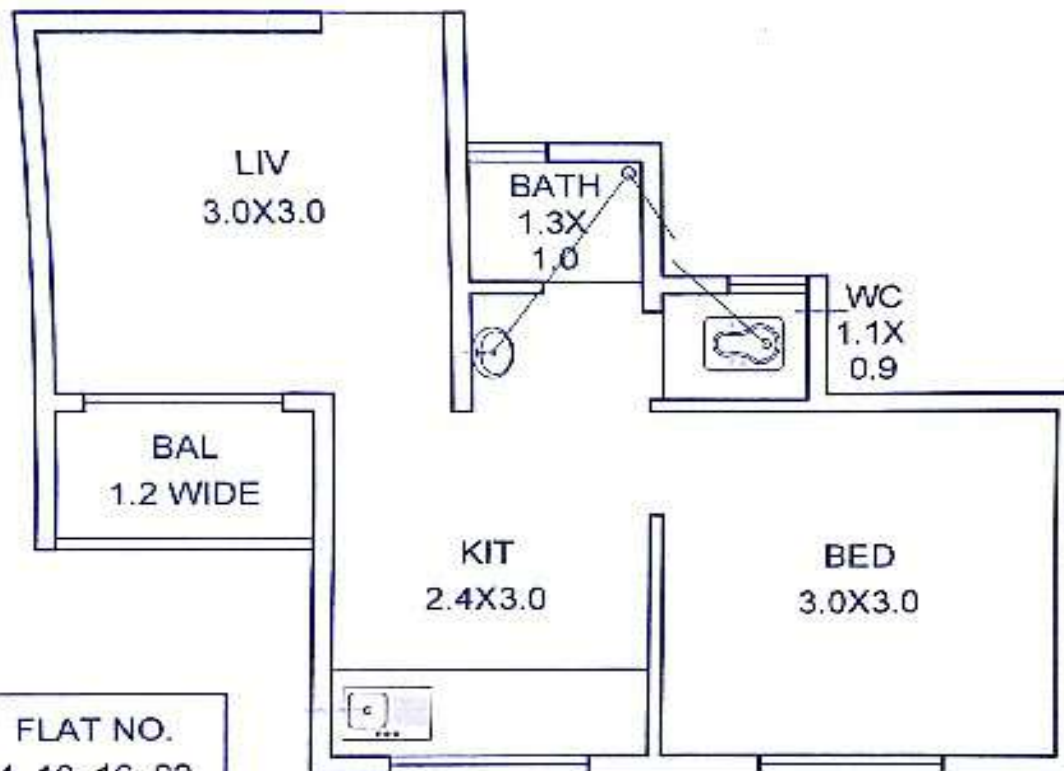
PLAN OF SINGLE UNIT

AREA STATEMENT

NO. OF UNITS = 14/42
 AREA OF EACH UNIT:
 CARPET AREA = 29.90 SQ.M
 BALCONY = 3.44 SQ.M
 SUPER B/U AREA = 8.97 SQ.M
 TOTAL AREA OF EACH UNIT
 42.31 SQ.M

PROPOSED RESIDENTIAL BUILDING FOR EWS HOUSING UNDER PMAY ON S.NO. 49/8 (PART) AND S. NO. 49/12 OF MAKHAMALABAD SHIWAR, NASHIK, FOR MHADA

	SIGNATURE
CHIEF OFFICER	
EXECUTIVE ENGINEER	
DEPUTY ENGINEER	
SECTIONAL ASST. ENGINEER	
JUNIOR ARCHITECT ASSISTANT	
OWNER	NASHIK HOUSING & AREA DEV. BOARD GRIHA NIRMAN BHAVAN (2nd FLOOR) RAM GANESH GADKARI CHOWK, NASHIK
STRUCTURAL ENGINEER'S SIGN	
ARCHITECT'S SIGN	<i>Hemant</i>
JOB NO.	DWG. NO.
DATE	SCALE
TITLE	FLOOR PLANS
DEALT BY	AR. BIPIN BONDE & AR. HEMANT DEORE
	2 ARCH. A/11A
BIPIN BONDE HEMANT DEORE	
ARCHITECTURAL CONSULTANTS	
VRAJ VILLAGE HOUSING COLONY COLLEGE ROAD, NASHIK, MH 421008	



FLAT NO.
4, 10, 16, 22
28, 24, 40

PLAN OF SINGLE UNIT

AREA STATEMENT

NO. OF UNITS = 14/42

AREA OF EACH UNIT:
 CARPET AREA = 29.90 SQ.M
 BALCONY = 2.26 SQ.M
 SUPER B/U AREA = 8.97 SQ.M
 TOTAL AREA OF EACH UNIT
 41.13 SQ.M

PROPOSED RESIDENTIAL BUILDING
 FOR EWS HOUSING UNDER PMAY
 ON S.NO. 49/8 (PART) AND
 S. NO. 49/12 OF MAKHAMALABAD
 SHIWAR, NASHIK, FOR
 MHADA

	SIGNATURE
CHIEF OFFICER	
EXECUTIVE ENGINEER	
DEPUTY ENGINEER	
REGIONAL ASST. ENGINEER	
LEADER ARCHITECT ASSISTANT	

OWNER
 NASHIK HOUSING & AREA DEV. BOARD
 GRIHA NIRMAN BHAVAN (2nd FLOOR)
 RAM GANESH GADKARI CHOWK, NASHIK

STRUCTURAL ENGINEER'S SIGN.

ARCHITECT'S SIGN.



DATE	NO. OF UNITS	DATE	NO. OF UNITS
11/01/2018	14	11/01/2018	14

TITLE FLOOR PLAN SECTION
 DEALT BY
 AR. BIPIN BONDE & AR. HEMANT DEORE
 BARCH. A/11A

BIPIN BONDE
HEMANT DEORE

ARCHITECTURAL CONSULTANTS

VIRAJWELA, SHIVAJI COLONY,
 COLLEGE ROAD, NASHIK, PH.2575080

**Construction of 256 EWS DU's under PMAY component AHP at.S.No3321
wadar wasti at Phaltan Dist. Satara**

PROJECT INFORMATION

Rs. In Lakhs

Name of Scheme	Name of City / Impl. Agency	No. Of Dus		Project Cost				Gol Share	GoM Share	I/A Share	Beneficiary Share
				Housing	Infra	Others	Total				
Construction of 256 EWS DU's under PMAY component AHP at.S.No3321 wadar wasti at Phaltan Dist. Satara	Phaltan Municipal Council	EWS	256	2097.84	297.12	239.56	2634.52	384.00	256.00	0.00	1995.52
		LIG					0.00				
		MIG					0.00				
		HIG					0.00				
		Total	256.00	2097.84	297.12	239.56	2634.52				

**20/93: Construction of 256 EWS DU's under PMAY component AHP
at.S.No3321 wadar wasti at Phaltan Dist. Satara**

PROJECT INFORMATION

Carpet Area sq.mt. Of EWS	29.57	Sale Price (with out Govt. Grant) in (Rs .Lakhs)		8.19			
Area of Land:(in Ha)		Sale Price (with Govt. Grant) In (Rs. Lakhs)		5.69			
Ownership of Land:	Phaltan Municipal Council						
Reservation on Land:	Residential	Sale Price Rate/Sq.m. of CA in (Rs.)		27697			
No. of EWS beneficiaries covered in the project:	Gen	SC	ST	OBC	Other	Total	Minority
						256	
Whether the provisions of Civic infrastructure has been made as per applicable State norms/ CPHEEO norms/ IS code / NBC?							
i) Water Supply (Yes / No)		Yes					
ii) Sewerage (Yes / No)		Yes					
iii) Road (Yes / No)		Yes					
iv) Storm water drain (Yes / No)		Yes					
v) External Electrification (Yes / No)		Yes					
vi) Solid waste management (Yes / No)		Yes					
vii) Any other, Specify)							

**20/93: Construction of 256 EWS DU's under PMAY component AHP
at.S.No3321 wadar wasti at Phaltan Dist. Satara**

Observations:

1. Proposal is scrutinized and submitted by Chief Officer MHADA Pune.
2. As per the report from Chief Officer MHADA Pune,
 - a) 24 m Wide DP road for Approach to the site is available.
 - b) Phaltan M.C has made the provision for external water supply, Electricity, and Septic tank.
 - c) As regards the availability of social infrastructure primary school named Shree Ram vidya bhavan High school and college are available within 1 K.M from the site.
 - d) Market and Bus stop is available within 2 K.M.

It is recommended to submit the DPR to CSMC for approval

JE
HOOL

2

PLAY
GROUND



4

5

6

7

8

9

10

11

12

13

14

AD

D.P. ROAD

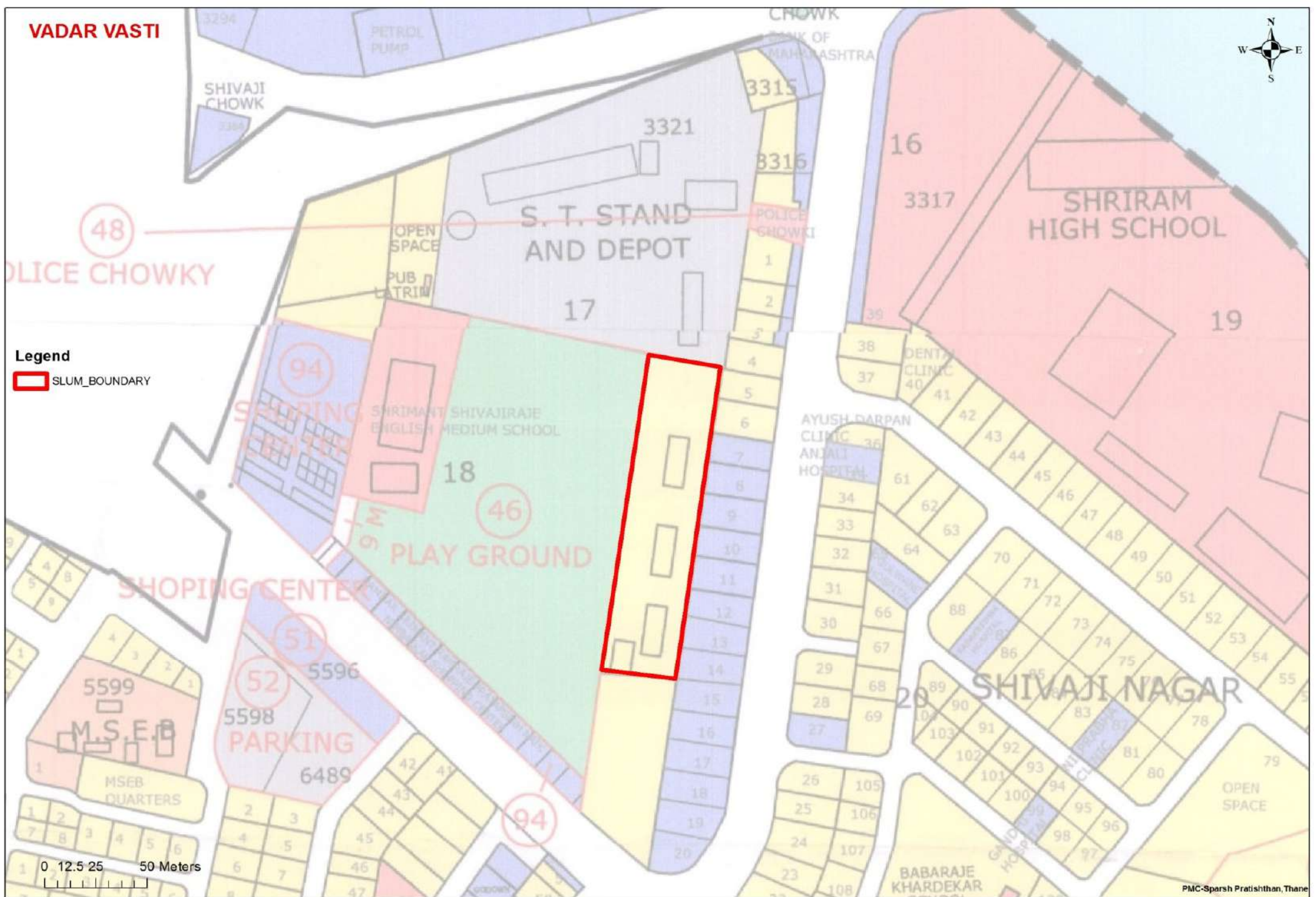
TENEMENTS DETAILS

SL.NO	TYPE	NO. OF BLDG.	NO. OF TEN.	NO. OF SHOP
1	AHP 1 (G+7)	1	128	
2	AHP 1 (G+7)	1	128	—
	TOTAL	2	256	—



AREA STATEMENT

SL.NO	TYPE	SIZE	AREA
	LIVING ROOM	2.67 X 3.78	10.07
	KITCHEN	1.3 X 0.82 1.48 X 2.2	0.85 3.25
	BEDROOM	3.0 X 3.0	9.0
	PASSAGE	1.45 X 0.8 1.0 X 0.9	1.30 0.9
	W.C.	1.0 X 1.0	1.0
	BATH	1.0 X 1.25	1.25
	BAL	2.2 X 1.0	2.2
	DOOR JAMS	0.9 X 0.15 0.15 X 0.75 0.75 X 0.1	0.13 0.112 0.75
			29.96



Wadar Wasti Part DP- Residential zone



VADAR VASTI

Legend

AOI

0 5 10 20 Meters

Wadar Wasti Satellite Image

Pune Housing and area Development Board_AHP_ 126 EWS DUs

PROJECT INFORMATION

Rs. In Lakhs

Name of Scheme	Name of City / Impl. Agency	No. Of Dus		Project Cost				Gol Share	GoM Share	I/A Share	Beneficiary Share
				Housing	Infra	Others	Total				
Pune Housing and area Development Board_AHP_ 126 EWS Dus	Pune Municipal Corporation	EWS	126	1133.94	3.31	455.07	1592.32	189.00	126.00	0.00	1277.32
		LIG	112.00	1525.25	2.93	611.86	2140.04				
		MIG					0.00				
		HIG					0.00				
		Total	238.00	2659.19	6.24	1066.93	3732.36				

Pune Housing and area Development Board_AHP_ 126 EWS DUs

PROJECT INFORMATION

Carpet Area sq.mt. Of EWS	29.38	Sale Price (with out Govt. Grant) in (Rs .Lakhs)					10.1
Area of Land:(in Ha)	0.8	Sale Price (with Govt. Grant) In (Rs. Lakhs)					7.6
Ownership of Land:	State Government Land Area 8000 Sq. M is in paper posession of MHADA physical posession will be handed over after approval of SLSMC						
Reservation on Land:	Residential	Sale Price Rate/Sq.m. of CA in (Rs.)				34377	
No. of EWS beneficiaries covered in the project:	Gen	SC	ST	OBC	Other	Total	Minority
	63	14	8	0	41	126	
Whether the provisions of Civic infrastructure has been made as per applicable State norms/ CPHEEO norms/ IS code / NBC?							
i) Water Supply (Yes / No)		Yes					
ii) Sewerage (Yes / No)		Yes					
iii) Road (Yes / No)		Yes					
iv) Storm water drain (Yes / No)		Yes					
v) External Electrification (Yes / No)		Yes					
vi) Solid waste management (Yes / No)		Yes					

Pune Housing and area Development Board_AHP_ 126 EWS DUs

Observations:

1. The proposal is scrutinized by Chief Officer/ MHADA Pune.
2. As per the report
 - a) The DU's under Project are proposed to allot to journalists and 50% DU's are proposed to allot eligible employees of collector office and Police Department.
 - b) 12.0 M wide road is available.
 - c) W/S is being made available by Solapur Municipal council.
 - d) External electrification is available.

The total dus for this project are 238 in numbers and state recommends the project under AHP. It is recommended to submit the DPR to CSMC for approval.



Thank You !