



Welcome

CSMC

49th Meeting

27/11/2019

Pradhan Mantri Awas Yojana (Urban)



PROGRESS OF PROJECTS



Verticals	Houses Approved	Work order Issued	Grounded/In Progress			Completed
			Foundation	Lintel	Roof Casted	
ISSR	2,23,237	69,548	-	-	-	2,360
AHP	5,25,026	75,679	9,800	4,755	3,463	3,784
BLC (N/E)	2,06,470	37,539	9,375	5,470	6,831	5,095
Total	9,54,733	1,82,766	19,175	10,225	10,294	11,239
CLSS	Till 26.11.2019, upfront subsidy of Rs 4591.15 Cr. released to 1,95,340 beneficiaries.					

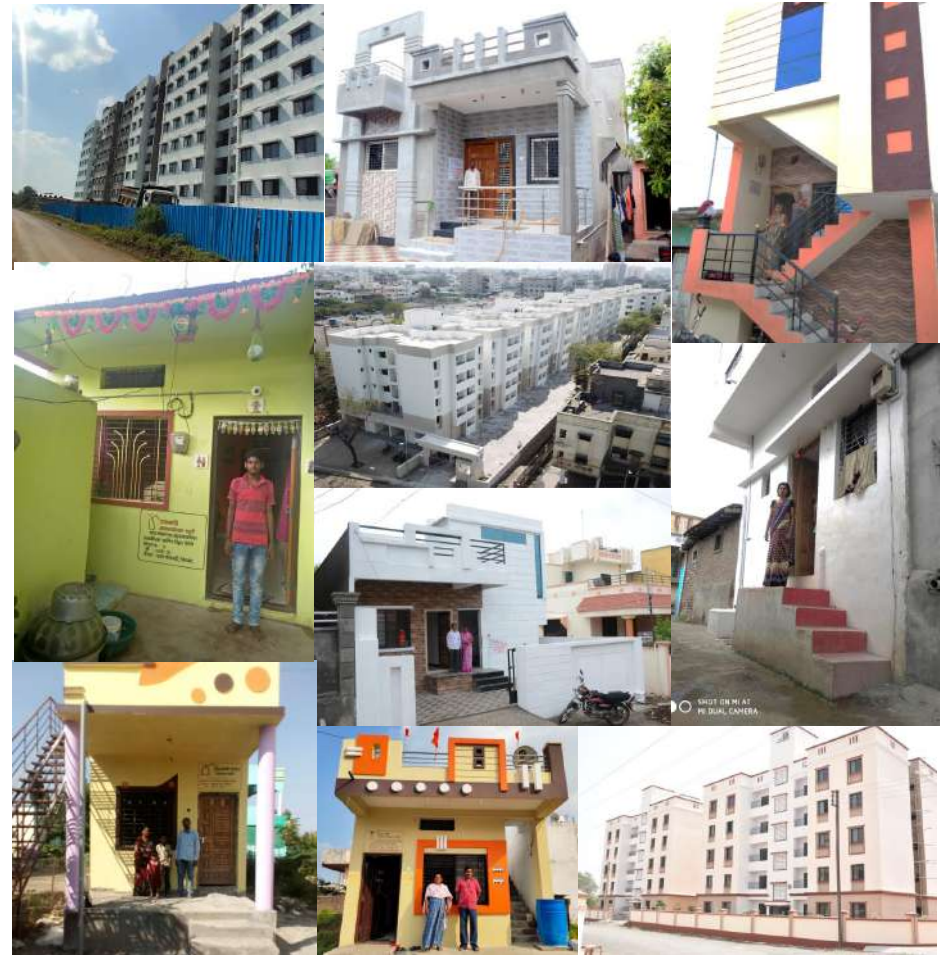
Note: Provide the details of relevant projects

Projects at a glance

Sl. No.	Component	Implementing Agency	No of Proposals	EWS DU
1	AHP	Respective Urban Local Body	1	594
	AHP-PPP	Respective Urban Local Body	1	323
4	BLC	Respective Urban Local Body	19	3774
		Total	21	4691
5	AHP for revision of DPR	PMC	3	2033
6	BLC for revision in DPR	PMRDA	1	2300
7	BLC for revision in DPR	Karmara Municipal Council	1	44
Miscellaneous				
7	BLC	Malkapur Municipal Council	1	200
8	AHP	Nashik Housing Board	1	42
10	Others	PWD	1	2012

Total Number of Dwelling Units: 4691 EWS

Photos of projects under BLC and AHP



Barshi Municipal Council



Karanja Municipal Council



Hingoli Municipal Council



Gadchiroli Municipal Council



Shirala Nagar Panchayat



Nanded Waghala City Municipal Corporation



Nashik - PMAY Gut No.1560 Adgaon Nashik scheme



Nashik - PMAY Shrirampur scheme



Aurangabad – Affordable Housing under PMAY at Latur and Nakhattrawadi



Sangli- Construction of 88 EWS DU's under PMAY Scheme at s no 215,Sangli



Konkan Board – Affordable Housing under PMAY at Shirdhon



Nagpur Improvement Trust Affordable Housing



CIDCO - Affordable Housing Schemes , Navi Mumbai



Details of projects under AHP



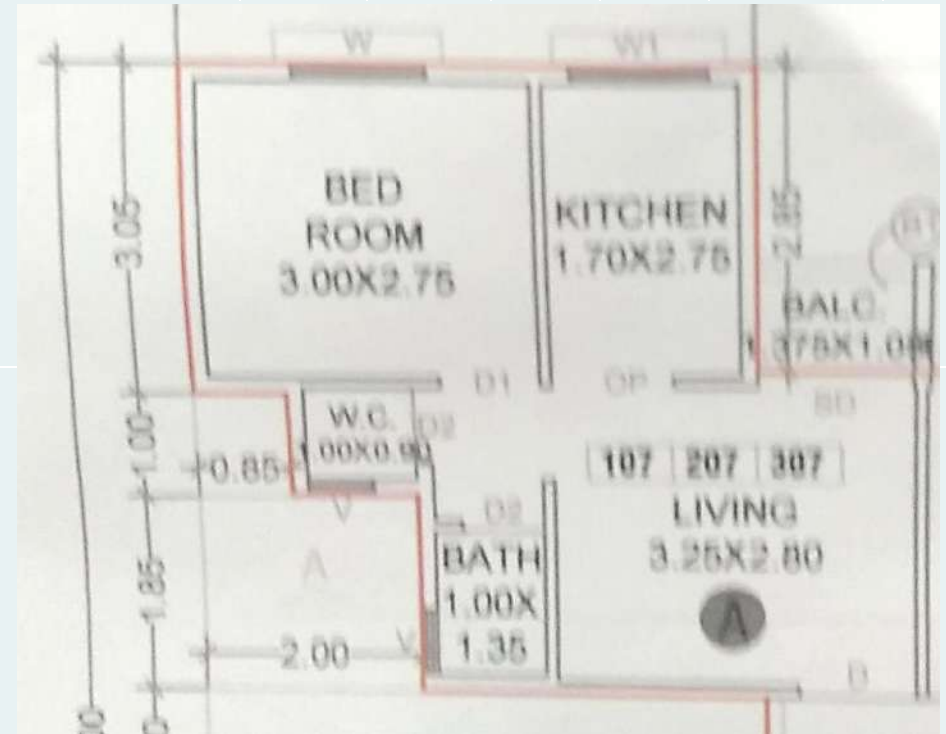
Abstract of projects under AHP

Construction of 594 s No. 44 (P) at Agarkar Mala, Nalegaon, Ahmednagar

Sl. No.	ULB/IA	District	DPR details	EWS D us	Reservation	Land ownershi p	Gol Sha re (Rs. Lacs)	GOM s hare (Rs. Lacs)	I/A sh are (Rs. Lac s)	Benefi ciary s hare (Rs. La cs)	EWS Proje ct cost (Rs . Lacs)	EWS Unit Cost (Rs. Lacs)
1	Ahmednaga r Municipal Corporation	Ahmednagar	Construction of 594 s No. 44 (P) at Agar kar Mala, Nalegaon, Ahmednagar	594	Residential	Self owned	891.00	594.00	0	5036.92	6521.92	10.98

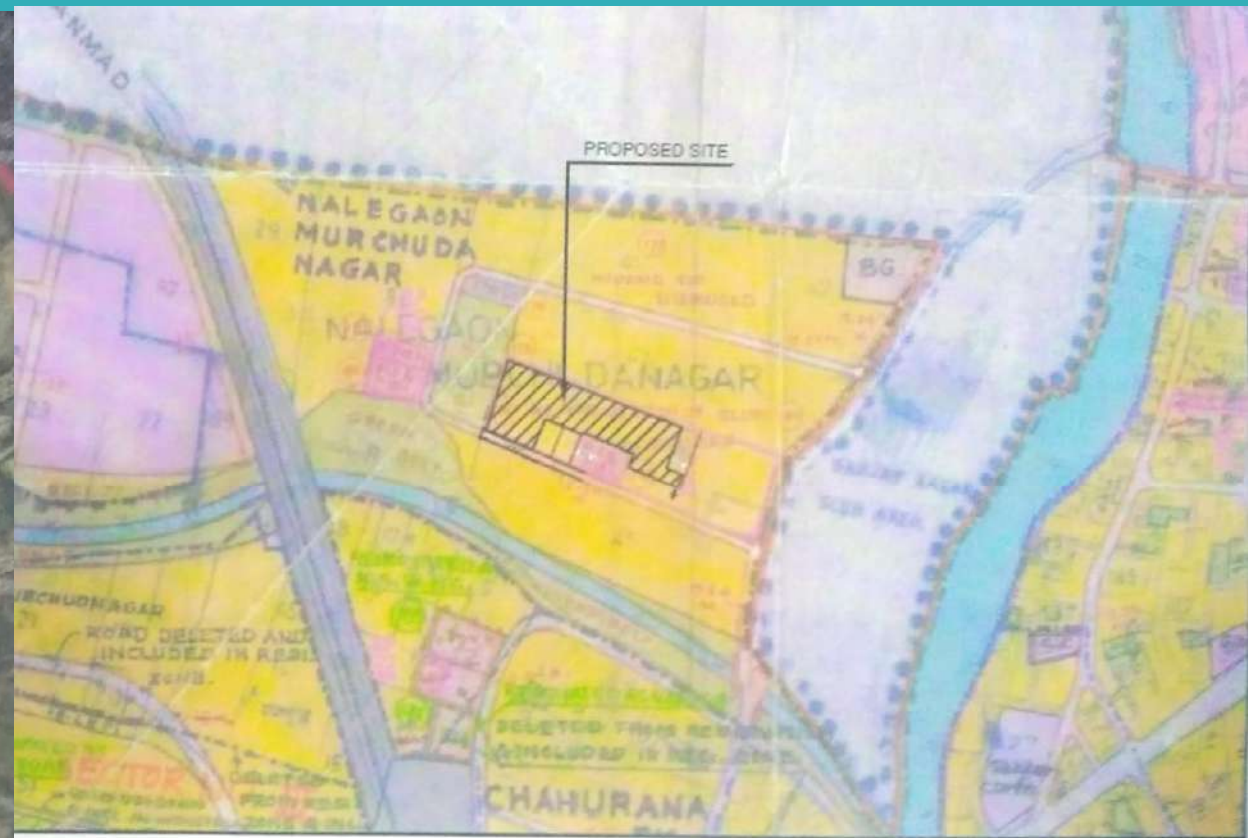
Remarks:

- 1)The DPR is submitted by Ahmednagar Municipal Corporation.
- 2) The land is in the name of Corporation.
- 3) The land is in Residential zone.
- 4) Sale price for EWS is Rs.10.98 lakhs.
- 5) 12.20m wide Approach road is available.



Unit Plan EWS – 1BHK

Location Plan



Deputy Engineer
Project Management
Ahmednagar Municipal Corporation

Details of projects under AHP/PPP



Abstract of projects under AHP-PPP

Construction of 633 Du's (465 EWS+168 LIG) at S. No 12/12/A/1 Hissa no 1 to 17, 1212/A/2/A at Mouje Murd Khurd, Taluka Karjat, Raigad

SI. No.	ULB/IA	District	DPR details	EWS D us	Reservation	Land ownership	Gol Sha re (Rs. Lacs)	GOM s hare (R s. Lacs)	I/A sh are (R s. Lac s)	Benefi ciary s hare (R s. La cs)	EWS Proje ct cost (Rs . Lacs)	EWS Unit Cost (Rs. Lacs)
1	M/s Gurusharan Homes through Konkan Board	Raigad	Construction of 633 Du's (465 EWS+168 LIG) at S. No 12/12/A/1 Hissa no 1 to 17, 1212/A/2/A at Mouje Murd Khurd, Taluka Karjat, Raigad	323	Residential	Land is owned by the proprietor Shri Janardhan Mahatre	484.5	323	0	4015.33		15.21

Carpet Area:29.99 sqm & 29.53 sqm

Built-up Area: 32.99 sqm &32.48sqm

Total Plot Area:

Remarks:

Estimated cost as per ASR

12.50 Lacs/unit (29.99sqm)

12.31 Lacs/unit(29.53 sqm)

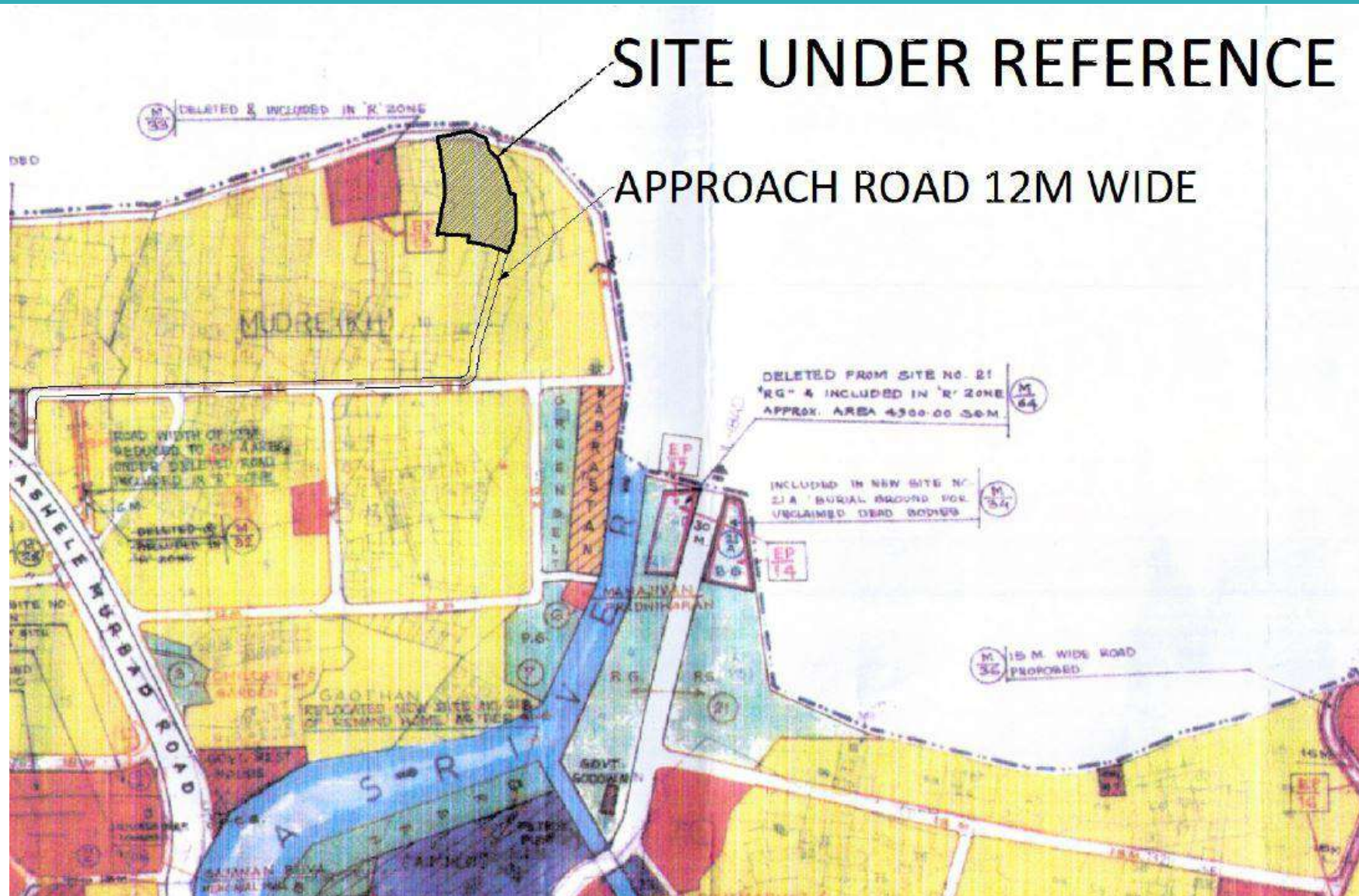
Estimated cost as per GR

13.75Lacs/unit (29.99sqm)

13.54Lacs/unit(29.53 sqm)

1. The estimated cost is 22%more than ASR , hence project proponent has demanded cost with increase of 10%a s per GR.
2. The approach to the site is through proposed 12 m DP , however there is no mention of proximity of approach road.
3. Assurance for water supply and electric supply is given.

Location Plan: Proposed Karjat



Location Plan: Proposed Karjat



Abstract of
projects
under BLC



Abstract of projects under BLC

Construction of 74 EWS Dus in various locations in Shendurjanaghat Municipal Council, District Nagpur

Sl. No.	ULB/IA	District	DPR details	EWS Dus	Land ownership	Gol Share (Rs. Lacs)	GOM share (Rs. Lacs)	I/A share (Rs. Lacs)	Beneficiary share (Rs. Lacs)	EWS Project cost (Rs. Lacs)	EWS Unit Cost (Rs. Lacs)	Beneficiary share /Unit (Rs. Lacs)
1	Shendurjanaghat Municipal Council	Amravati	Construction of 74 EWS Dus in various locations in Shendurjanaghat Municipal Council, District Nagpur	74	Self owned	111.00	74.00	22.92	273.43	481.35	6.50	3.70

Remarks:

- 1) Some of the plot areas are small in size ie less than 30 Sqmt. ULB to ensure that these plots are developable as per Bye laws.
- 2) Certified sample survey form 4B shall be attached as prescribed by GOI.

Abstract of projects under BLC

Construction of 570 EWS Dus in various locations in Parli Vajinath Municipal Council, District Beed

Sl. No.	ULB/IA	District	DPR details	EWS Dus	Land ownership	Gol Share (Rs. Lacs)	GOM share (Rs. Lacs)	I/A share (Rs. Lacs)	Beneficiary share (Rs. Lacs)	EWS Project cost (Rs. Lacs)	EWS Unit Cost (Rs. Lacs)	Beneficiary share /Unit (Rs. Lacs)
2	Parli Vajinath Municipal Council	Beed	Construction of 570 EWS Dus in various locations in Parli Vajinath Municipal Council, District Beed	570	Self owned	855.00	570.00	0.00	1938.6	3363.57	5.90	3.40

Remarks:

- 1) Certified Sample documents related to land ownership and survey form 4B should be attached with DPR.
- 2) Readable copy of typical plan should be attached with the DPR.

Abstract of projects under BLC

Construction of 92 EWS Dus in various locations in Shegaon Municipal Council, District Buldana

Sl. No.	ULB/IA	District	DPR details	EWS Dus	Land ownership	Gov Share (Rs. Lacs)	GOM share (Rs. Lacs)	I/A share (Rs. Lacs)	Beneficiary share (Rs. Lacs)	EWS Project cost (Rs. Lacs)	EWS Unit Cost (Rs. Lacs)	Beneficiary share /Unit (Rs. Lacs)
3	Shegaon Municipal Council	Buldana	Construction of 92 EWS Dus in various locations in Shegaon Municipal Council, District Buldana	92	Self owned	138.00	92.00	28.437	338.74	597.18	6.49	3.68

Remarks:

- 1) Some of the plot areas are small in size i.e. less than 30 Sqmt. ULB to ensure that these plots are developable as per Bye laws.
- 2) Certified sample survey form 4B shall be attached as prescribed by GOI. .

Abstract of projects under BLC

Construction of 90 EWS Dus in various locations in Chikhli Municipal Council, District Buldana

Sl. No.	ULB/IA	District	DPR details	EWS Dus	Land ownership	Gov Share (Rs. Lacs)	GOM share (Rs. Lacs)	I/A share (Rs. Lacs)	Beneficiary share (Rs. Lacs)	EWS Project cost (Rs. Lacs)	EWS Unit Cost (Rs. Lacs)	Beneficiary share /Unit (Rs. Lacs)
4	Chikhli Municipal Council	Buldana	Construction of 90 EWS Dus in various locations in Chikhli Municipal Council, District Buldana	90	Self owned	135.00	90.00	27.97	334.35	587.32	6.53	3.72

Remarks:

- 1) Some of the plot areas are small in size ie less than 30 Sqmt. ULB to ensure that these plots are developable as per Bye laws.
- 2) Certified sample survey form 4B shall be attached as prescribed by GOI.

Abstract of projects under BLC

Construction of 45 EWS Dus in various locations in Korpana Nagar Panchayat, District Chandrapur (Phase 2)

Sl. No.	ULB/IA	District	DPR details	EWS Dus	Land ownership	Gol Share (Rs. Lacs)	GOM share (Rs. Lacs)	I/A share (Rs. Lacs)	Beneficiary share (Rs. Lacs)	EWS Project cost (Rs. Lacs)	EWS Unit Cost (Rs. Lacs)	Beneficiary share /Unit (Rs. Lacs)
5	Korpana Nagar Panchayat	Chandrapur	Construction of 45 EWS Dus in various locations in Korpana Nagar Panchayat, District Chandrapur (Phase 2)	45	Self owned	67.50	45.00	0.00	124.54	237.04	5.27	2.77

Remarks:

- 1) ULB shall attach typical plans for design 1 with DPR.
- 2) ULB should mention the income details required with beneficiary list.
- 3) ULB shall comply the specifications required for construction work.
- 4) ULB shall attach standard survey form 4B as prescribed by GOI.

Abstract of projects under BLC

Construction of 71 EWS Dus in various locations in Shirpur Warwade, District Dhule

Sl. No.	ULB/IA	District	DPR details	EWS Dus	Land ownership	Govt Share (Rs. Lacs)	GOM share (Rs. Lacs)	I/A share (Rs. Lacs)	Beneficiary share (Rs. Lacs)	EWS Project cost (Rs. Lacs)	EWS Unit Cost (Rs. Lacs)	Beneficiary share /Unit (Rs. Lacs)
6	Shirpur Warwade Municipal Council	Dhule	Construction of 71 EWS Dus in various locations in Shirpur Warwade, District Dhule	71	Self owned	82.50	55.00	0.00	204.147	341.647	6.21	3.71

Remarks:

ULB shall comply

- 1) The details of existing plots, type of existing structure should be mentioned in beneficiary list.
- 2) Certified sample documents related to land ownership and survey forms shall be attached with the DPR.

Abstract of projects under BLC

Construction of 23 EWS Dus in various locations in Etapalli Nagar Panchayat, District Gadchiroli

Sl. No.	ULB/IA	District	DPR details	EWS Dus	Land ownership	Gol Share (Rs. Lacs)	GOM share (Rs. Lacs)	I/A share (Rs. Lacs)	Beneficiary share (Rs. Lacs)	EWS Project cost (Rs. Lacs)	EWS Unit Cost (Rs. Lacs)	Beneficiary share /Unit (Rs. Lacs)
7	Etapalli Nagar Panchayat	Gadchiroli	Construction of 23 EWS Dus in various locations in Etapalli Nagar Panchayat, District Gadchiroli	23	Self owned	34.50	23.00	0.00	85.3	142.80	6.21	3.71

Remarks:

- 1) Plot sizes are too small in size like 18.58 Sq. Mtr, 20.90 Sq.mtr. ULB to ensure that the plots are developable.
- 2) Certified sample documents of beneficiaries shall be submitted by ULB.

Abstract of projects under BLC

Construction of 88 EWS Dus at various locations in Aheri Nagar Panchayat, District Gadchiroli

Sl. No.	ULB/IA	District	DPR details	EWS Dus	Land ownership	Gol Share (Rs. Lacs)	GOM share (Rs. Lacs)	I/A share (Rs. Lacs)	Beneficiary share (Rs. Lacs)	EWS Project cost (Rs. Lacs)	EWS Unit Cost (Rs. Lacs)	Beneficiary share /Unit (Rs. Lacs)
8	Aheri Nagar Panchyat	Gadchiroli	Construction of 88 EWS Dus at various locations in Aheri Nagar Panchayat, District Gadchiroli	88	Self owned	132.00	88.00	0.00	290.17	510.170	5.80	3.30

Remarks:

- 1) Some of the plot areas are smaller In size, less than 25.00 Sq.mtr. ULB to ensure that the plots are developable.
- 2)ULB should mention the income details in beneficiary list.
- 3) Sample copy of certified standarad survey form 4B should be attached as prescribed by ULB.
- 4) Carpet area calculations should be mentioned in typical plans.

Abstract of projects under BLC

Construction of 234 EWS Dus at various locations in Dhanora Nagar Panchayat, District Gadchiroli

Sl. No.	ULB/IA	DISTRICT	DPR details	EWS Dus	LAND OWNERSHIP	Gol Share (Rs. Lacs)	GOM s hare (Rs. Lacs)	I/A sh are (Rs. Lacs)	Benefi ciary s hare (Rs. Lacs)	EWS Proje ct cost (Rs. Lacs)	EWS Unit Cost (Rs. Lacs)	Benef sha re /Unit (Rs. Lacs)
9	Dhanora Na gar Panchy at	Gadchiroli	Construction of 234 EWS Dus at various l ocations in Dhanora Nagar Panchayat, Di strict Gadchiroli	234	Self owned	351.00	234.00	0.00	771.17	1356.170	5.80	3.30

Remarks:

- 1)ULB should mention the income details in beneficiary list.
- 2) Sample copy of certified standarad survey form 4B should be attached as prescribed by ULB.
- 3) Carpet area calculations should be mentioned in typical plans by ULB.

Abstract of projects under BLC

Construction of 37 EWS Dus at various locations in Korchi Nagar Panchayat, District Gadchiroli

Sl. No.	ULB/IA	District	DPR details	EWS Dus	Land ownership	Gol Share (Rs. Lacs)	GOM share (Rs. Lacs)	I/A share (Rs. Lacs)	Beneficiary share (Rs. Lacs)	EWS Project cost (Rs. Lacs)	EWS Unit Cost (Rs. Lacs)	Beneficiary share /Unit (Rs. Lacs)
10	Korchi Nagar Panchayat	Gadchiroli	Construction of 37 EWS Dus at various locations in Korchi Nagar Panchayat, District Gadchiroli	37	Self owned	55.50	37.00	0.00	121.95	214.450	5.80	3.30

Remarks:

- 1)ULB should mention the income details in beneficiary list.
- 2) Sample copy of standard survey form 4B shall be attached with the DPR.
- 3) Carpet area calculations should be mentioned in typical plans.

Abstract of projects under BLC

Construction of 393 EWS Dus at various locations in Desaiganj Municipal Council, District Gadchiroli

Sl. No.	ULB/IA	District	DPR details	EWS Dus	Land ownership	Gol Share (Rs. Lacs)	GOM share (Rs. Lacs)	I/A share (Rs. Lacs)	Beneficiary share (Rs. Lacs)	EWS Project cost (Rs. Lacs)	EWS Unit Cost (Rs. Lacs)	Beneficiary share /Unit (Rs. Lacs)
11	Desaiganj Municipal Council	Gadchiroli	Construction of 393 EWS Dus at various locations in Desaiganj Municipal Council, District Gadchiroli	393	Self owned	589.50	393.00	0.00	1295.18	2277.680	5.80	3.30

Remarks:

- 1) Some of the plot areas are smaller in size, less than 25.00 Sq.mtr. ULB to ensure that the plots are developable.
- 2) ULB should mention the income details in beneficiary list.
- 3) Sample copy of certified standard survey form 4B should be attached as prescribed by ULB.
- 4) Carpet area calculations should be mentioned in typical plans.

Abstract of projects under BLC

Construction of 167 EWS Dus in various locations in Nilanga Municipal Council, District Latur (phase 3)

Sl. No.	ULB/IA	District	DPR details	EWS Dus	Land ownership	Gol Share (Rs. Lacs)	GOM share (Rs. Lacs)	I/A share (Rs. Lacs)	Beneficiary share (Rs. Lacs)	EWS Project cost (Rs. Lacs)	EWS Unit Cost (Rs. Lacs)	Beneficiary share /Unit (Rs. Lacs)
12	Nilanga Municipal Council	Latur	Construction of 167 EWS Dus in various locations in Nilanga Municipal Council, District Latur (phase 3)	167	Self owned	250.50	167.00	0.00	635.02	1052.517	6.30	3.80

Remarks:

- 1) Wardwise marking should be done on DP sheet by ULB
- 2) Area of one of the beneficiary shows 17.51 Sq.Mtr , ULB to ensure that the plot is developable.
- 3) Certified sample documents shall be attached by ULB.

Abstract of projects under BLC

Construction of 51 EWS Dus in various locations in Kandhar Municipal Council, District Nanded

Sl. No.	ULB/IA	District	DPR details	EWS Dus	Land ownership	Gol Share (Rs. Lacs)	GOM share (Rs. Lacs)	I/A share (Rs. Lacs)	Beneficiary share (Rs. Lacs)	EWS Project cost (Rs. Lacs)	EWS Unit Cost (Rs. Lacs)	Beneficiary share /Unit (Rs. Lacs)
13	Kandhar Municipal Council	Nanded	Construction of 51 EWS Dus in various locations in Kandhar Municipal Council, District Nanded	51	Self owned	76.50	51.00	0.00	209.775	337.275	6.61	4.11

Remarks:

1) ULB should mention Plot size/ area in beneficiary list.

Abstract of projects under BLC

Construction of 800 EWS Dus in various locations in Pathri Municipal Council, District Parbhani

Sl. No.	ULB/IA	District	DPR details	EWS Dus	Land ownership	Gol Share (Rs. Lacs)	GOM share (Rs. Lacs)	I/A share (Rs. Lacs)	Beneficiary share (Rs. Lacs)	EWS Project cost (Rs. Lacs)	EWS Unit Cost (Rs. Lacs)	Beneficiary share /Unit (Rs. Lacs)
14	Pathri Municipal Council	Parbhani	Construction of 800 EWS Dus in various locations in Pathri Municipal Council, District Parbhani	800	Self owned	1200.00	800.00	0.00	3048	5048.00	6.31	3.81

Remarks:

- 1) The ULB shall be mentioned the details / types of existing structure i.e. Kachha/pucca in beneficiary list.

Abstract of projects under BLC

Construction of 770 EWS Dus in various locations in Pathri Municipal Council, District Parbhani

Sl. No.	ULB/IA	District	DPR details	EWS Dus	Land ownership	Gov Share (Rs. Lacs)	GOM share (Rs. Lacs)	I/A share (Rs. Lacs)	Beneficiary share (Rs. Lacs)	EWS Project cost (Rs. Lacs)	EWS Unit Cost (Rs. Lacs)	Beneficiary share /Unit (Rs. Lacs)
15	Pathri Municipal Council	Parbhani	Construction of 770 EWS Dus in various locations in Pathri Municipal Council, District Parbhani	770	Self owned	1155.00	770.00	0.00	2934.1	4859.09	6.31	3.81

Remarks:

1) The ULB shall be mentioned the details / types of existing structure i.e. Kachha/pucca in beneficiary list.

Abstract of projects under BLC

Construction of 43 EWS Dus in various locations in Jath Municipal Council, District Sangli (Phase 2)

Sl. No.	ULB/IA	District	DPR details	EWS Dus	Land ownership	Gol Share (Rs. Lacs)	GOM share (Rs. Lacs)	I/A share (Rs. Lacs)	Beneficiary share (Rs. Lacs)	EWS Project cost (Rs. Lacs)	EWS Unit Cost (Rs. Lacs)	Beneficiary share /Unit (Rs. Lacs)
16	Jath Municipal Council	Sangli	Construction of 43 EWS Dus in various locations in Jath Municipal Council, District Sangli (Phase 2)	43	Self owned	64.50	43.00	0.00	156.67	264.171	6.14	3.64

Remarks:

- 1) ULB shall comply the corrected carpet area calculations.

Abstract of projects under BLC

Construction of 55 EWS Dus in various locations in Jath Municipal Council, District Sangli

Sl. No.	ULB/IA	District	DPR details	EWS Dus	Land ownership	Gol Share (Rs. Lacs)	GOM share (Rs. Lacs)	I/A share (Rs. Lacs)	Beneficiary share (Rs. Lacs)	EWS Project cost (Rs. Lacs)	EWS Unit Cost (Rs. Lacs)	Beneficiary share /Unit (Rs. Lacs)
17	Jath Municipal Council	Sangli	Construction of 55 EWS Dus in various locations in Jath Municipal Council, District Sangli	55	Self owned	82.50	55.00	0.00	204.147	341.647	6.21	3.71

Remarks:

- 1) Carpet area calculations should be corrected by ULB.
- 2) ULB shall mention the income details in beneficiary list.
- 3) ULB should attach the specifications required for construction work.
- 4) ULB shall attach standard survey form 4B as prescribed by GOI.
- 5) Certified sample documents related to land ownership shall be furnished by ULB.

Abstract of projects under BLC

Construction of 74 EWS Dus in various locations in Ambernath Municipal Council, District Thane

Sl. No.	ULB/IA	District	DPR details	EWS Dus	Land ownership	Gol Share (Rs. Lacs)	GOM share (Rs. Lacs)	I/A share (Rs. Lacs)	Beneficiary share (Rs. Lacs)	EWS Project cost (Rs. Lacs)	EWS Unit Cost (Rs. Lacs)	Beneficiary share /Unit (Rs. Lacs)
18	Ambernath Municipal Council	Thane	Construction of 74 EWS Dus in various locations in Ambernath Municipal Council, District Thane	74	Self owned	111.00	74.00	0.00	243.86	428.86	5.80	3.30

Remarks:

- 1) ULB shall attach readable copy of DP sheet.
- 2) Some of the plot areas are small in size ie less than 30 Sqmt. ULB to ensure that these plots are developable as per Bye laws.
- 3) ULB shall mention the income details in beneficiary list.
- 4) The specifications required shall be attach by ULB.

Abstract of projects under BLC

Construction of 74 EWS Dus in various locations in Ambernath Municipal Council, District Thane

Sl. No.	ULB/IA	District	DPR details	EWS Dus	Land ownership	Gol Share (Rs. Lacs)	GOM share (Rs. Lacs)	I/A share (Rs. Lacs)	Beneficiary share (Rs. Lacs)	EWS Project cost (Rs. Lacs)	EWS Unit Cost (Rs. Lacs)	Beneficiary share /Unit (Rs. Lacs)
19	Seloo Nagar Panchayat	Wardha	Construction of 97 EWS Dus in various locations in Seloo Nagar Panchayat at Municipal Council, District Wardha	97	Self owned	145.5	97	0	319.67	562.17	5.8	3.3

Remarks:

- 1) Carpet area calculations are not mentioned on typical plans.
- 2) ULB should mention the income details in beneficiary list.
- 3) ULB shall attach standard survey form 4B as prescribed by GOI.
- 4) ULB should attach the specifications required for construction work.

Projects under AHP for Revision of DPR



Sl. No	Project Name	ULB /IA	Meeting no & Date of CSMC	DU's as per approval of CSMC	Land Ownership	Reservation	Gol Share (Rs. Lacs)	GoM Share (Rs. Lacs)	EWS Project Cost (Rs. Lacs)	I/A Share (Rs. Lacs)	Beneficiary Share (Rs. Lacs)	EWS Unit Cost (Rs. Lacs)
1	Construction of 602 EWS Tenements on S No 89 (P) + 92 (P), Hadapsar, Taluka Haveli, District Pune	Pune Municipal Corporation	30 th Meeting dated 07/02/2018	<u>602</u> EWS	Pune Municipal Corporation	Residential	903	602				10.504

Description requested for correction by SLNA

Sl. No	Project Name	ULB /IA	Meeting no & Date of CSMC	As per Revised Content.	Land Ownership	Reservation	Gol Share (Rs. Lacs)	GoM Share (Rs. Lacs)	EWS Project Cost (Rs. Lacs)	I/A Share (Rs. Lacs)	Beneficiary Share (Rs. Lacs)	EWS Unit Cost (Rs. Lacs)
1	Construction of 585 EWS Tenements on S No 89 (P) + 92 (P), Hadapsar, Taluka Haveli, District Pune	Pune Municipal Corporation	30 th Meeting dated 07/02/2018	<u>585</u> EWS	Pune Municipal Corporation	Residential	877.5	585	7571.8	0	4682.34	10.504

Remarks:

1) As per actual site conditions and due to planning constrains no of buildings reduced from 8 to 7. Hence the number of DU's reduced.

Sl. No.	Project Name	ULB /IA	Meeting no & Date of CS MC	DU's as per approval of CS MC	Land Ownership	Reservation	Gol Share (Rs. Lacs)	GoM Share (Rs. Lacs)	EWS Project Cost (Rs. Lacs)	I/A Share (Rs. Lacs)	Beneficiary Share (Rs. Lacs)	EWS Unit Cost (Rs. Lacs)
				EWS								
2	Construction of 336 EWS Tenements at S No 106 A, 16 A(P) + 17A (P) + 17B (P) + 18A (P) + 18B (P), Hadapsar, Taluka Haveli, District Pune	Pune Municipal Corporation	30 th Meeting dated 07/02/2018	<u>336</u>	Pune Municipal Corporation	Residential	504	336				10.504

Description requested for correction by SLNA

Sl. No.	Project Name	ULB /IA	Meeting no & Date of CS MC	As per Revised Content.	Land Ownership	Reservation	Gol Share (Rs. Lacs)	GoM Share (Rs. Lacs)	EWS Project Cost (Rs. Lacs)	I/A Share (Rs. Lacs)	Beneficiary Share (Rs. Lacs)	EWS Unit Cost (Rs. Lacs)
				EWS								
2	Construction of 340 EWS Tenements at S No 106 A, 16 A(P) + 17A (P) + 17B (P) + 18A (P) + 18B (P), Hadapsar, Taluka Haveli, District Pune	Pune Municipal Corporation	30 th Meeting dated 07/02/2018	<u>340</u>	Pune Municipal Corporation	Residential	510	340	3571.36	0	2721.36	10.504

Remarks:

1) As per actual site conditions as per approved plan the number of DUs are increased.

Sl. No.	Project Name	ULB /IA	Meeting no & Date of CS MC	DU's as per approval of CS MC	Land Ownership	Reservation	Gol Share (Rs. Lacs)	GoM Share (Rs. Lacs)	EWS Project Cost (Rs. Lacs)	I/A Share (Rs. Lacs)	Beneficiary Share (Rs. Lacs)	EWS Unit Cost (Rs. Lacs)
3	Construction of 1071 EWS Tenements at S No 39 (P), 40(P) Wadgaon (Kh) Taluka Haveli, District Pune	Pune Municipal Corporation	32 th Meeting dated 26/03/2018	<u>1071</u> EWS			1606.5	1071				10.504

Description requested for correction by PMC

Sl. No.	Project Name	ULB /IA	Meeting no & Date of CS MC	As per Revised Content.	Land Ownership	Reservation	Gol Share (Rs. Lacs)	GoM Share (Rs. Lacs)	EWS Project Cost (Rs. Lacs)	I/A Share (Rs. Lacs)	Beneficiary Share (Rs. Lacs)	EWS Unit Cost (Rs. Lacs)
3	Construction of 1108 EWS Tenements at S No 39 (P), 40(P) Wadgaon (Kh) Taluka Haveli, District Pune	Pune Municipal Corporation	32 th Meeting dated 26/03/2018	<u>1108</u> EWS		Residential	1662	1108	11638.432	0	9368.432	10.504

Remarks:
 1) As per site conditions 8 buildings (7 buildings P+12 floors& 1 building P+9 floors) are approved instead of 9 buildings of P+10 floors . Hence number of DU\$ increased.

Projects under BLC for revision of DPR



Abstract of projects under BLC

Construction of 2300 EWS Dus at various villages in BHOR taluka PMRDA area , District Pune

Sl. No.	ULB/IA	District	DPR details	EWS Dus	Land ownership	Gov Share (Rs. Lacs)	GOM share (Rs. Lacs)	I/A share (Rs. Lacs)	Beneficiary share (Rs. Lacs)	EWS Project cost (Rs. Lacs)	EWS Unit Cost (Rs. Lacs)	Beneficiary share /Unit (Rs. Lacs)
19	PMRDA	Pune	Construction of 2300 EWS Dus at various villages in BHOR taluka PMRDA area , District Pune	2300	Self owned	3450.00	2300.00	0.00	2470.407	8220.407	3.57	1.07

Remarks:

1)It was previously approved for 2436 Dus combinedly for Bhor & Velhe talukas in 43rd CSMC meeting dated 25 Feb 2019. Now the revised DPR is prepared for Bhor taluka for 2300 Dus separately and the new DPR for 136 Dus of Velhe taluka will be submitted separately.

Projects under
BLC for
Revision/
correction of
DPR



Projects under BLC for correction of DPR

Approved in 46th CSMC meeting dated 29th August, 2019

Sl. No.	ULB/IA	DISTRICT	DPR details	EWS Dus
1	Karmara Municipal Council	Solapur	Construction of 44 EWS houses at various locations under BLC in Karmara Municipal Council , District Solapur	44

Description requested for correction by ULB

1	Khandala Nagar Panchayat	Satara	Construction of 44 EWS houses at various locations under BLC in Khandala Nagar Panchayat limit, District Satara	44
---	--------------------------	--------	---	----

Projects under BLC and AHP for Cancellation



Sr No	Name of ULB / Implementing Agency	District	Name of DPR	Component	CSMC meeting Number/ Date for Cancellation	Remarks
Proposals under BLC for cancellation						
1	Malkapur Municipal Council	Buldana	Construction of 200 EWS houses at various locations under BLC in Malkapur Municipal Council limit, District Buldana	BLC	46th / 29th August, 2019	As already approved in 45th CSMC meeting, so requested for cancellation
Proposals under AHP for cancellation						
1	Nashik Housing Board	Nashik	Construction of 42 EWS Tenements on S No 49/12, Makhmalabad, District Nashik	AHP	38th/ 30th January, 2019	As already approved in 42nd CSMC meeting, so requested for cancellation

Projects under PWD for Consideration



Abstract of project

Construction of 2012 govt. quarters at Bandra ,Mumbai by PWD

Sl. No.	ULB/IA	District	DPR details	EWS Dus	Land ownership	Gol Share (Rs. Lacs)	GOM share (Rs. Lacs)	I/A share (Rs. Lacs)	Beneficiary share (Rs. Lacs)	EWS Project cost (Rs. Lacs)	EWS Unit area
19	PWD	Mumbai	Construction of 2012 govt. quarters at Bandra ,Mumbai	2012	Self owned	3018	2012	15470	20500	8220.407	29.90 sqm

Remarks:

1)With reference to the meeting dated 06/12/2018 under the chairmanship of Shri Shivdas Meena, Additional Secretary , MOHUA, it was decided to send this proposal to Ministry of Housing and Urban Affairs , GOI for provision of PMAY subsidy. Hence it is being referred for SLSMC consideration.

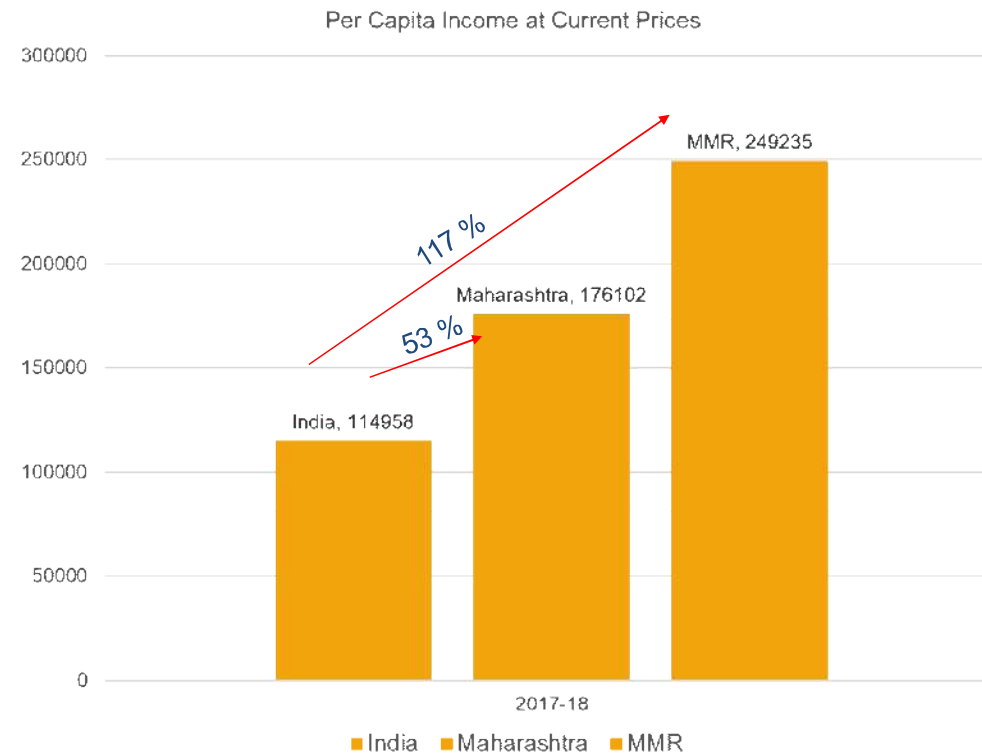
Proposal for income revision for EWS DU unit cost

Income Revision for EWS Category

PMAY (U) scheme is focused on meeting the housing need of Urban Poor (EWS category). The existing income criteria for EWS is 3 lakhs per annum.

	India	Maharashtra	MMR Zone
Per Capita Income	114,958	176,102	249,235
% difference more than India's per capita Income	-	53%	117%
Proposed Revision in Annual Income for EWS Category		4.5 Lakhs	6 Lakhs

- Considering the Per Capita Income of India, Maharashtra & MMR Zone of 2017-18, from the following graph it is clear that **per capita income of Maharashtra & MMR is always greater than India.**
- Considering the per capita income of 2018-19, there is 53% difference between India & Maharashtra. In the similar ratio, **the annual income criteria for Maharashtra should be increased from 3 Lakhs to 4.5 Lakhs. Whereas for MMR Region, it is more than double the per capita income of India, therefore we propose to increase the income for MMR region to 6 Lakhs per annum**



** MMR Zone includes, Mumbai City, Suburban, Thane, Palghar & Raigad District

Source: Economic Survey of Maharashtra 2018-19, a report by Directorate of Economics and Statistics, Planning Department, GoM



Thank you