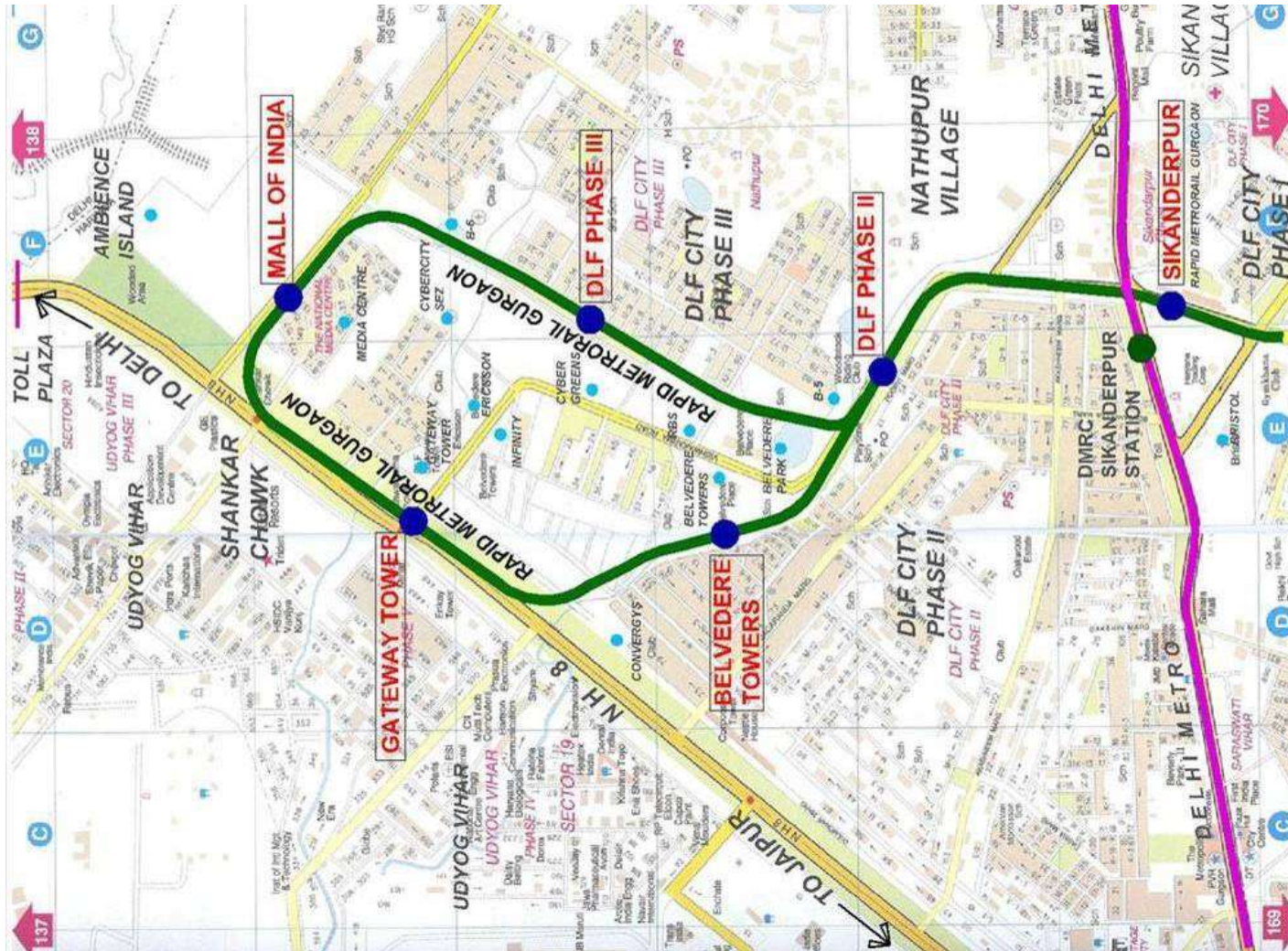


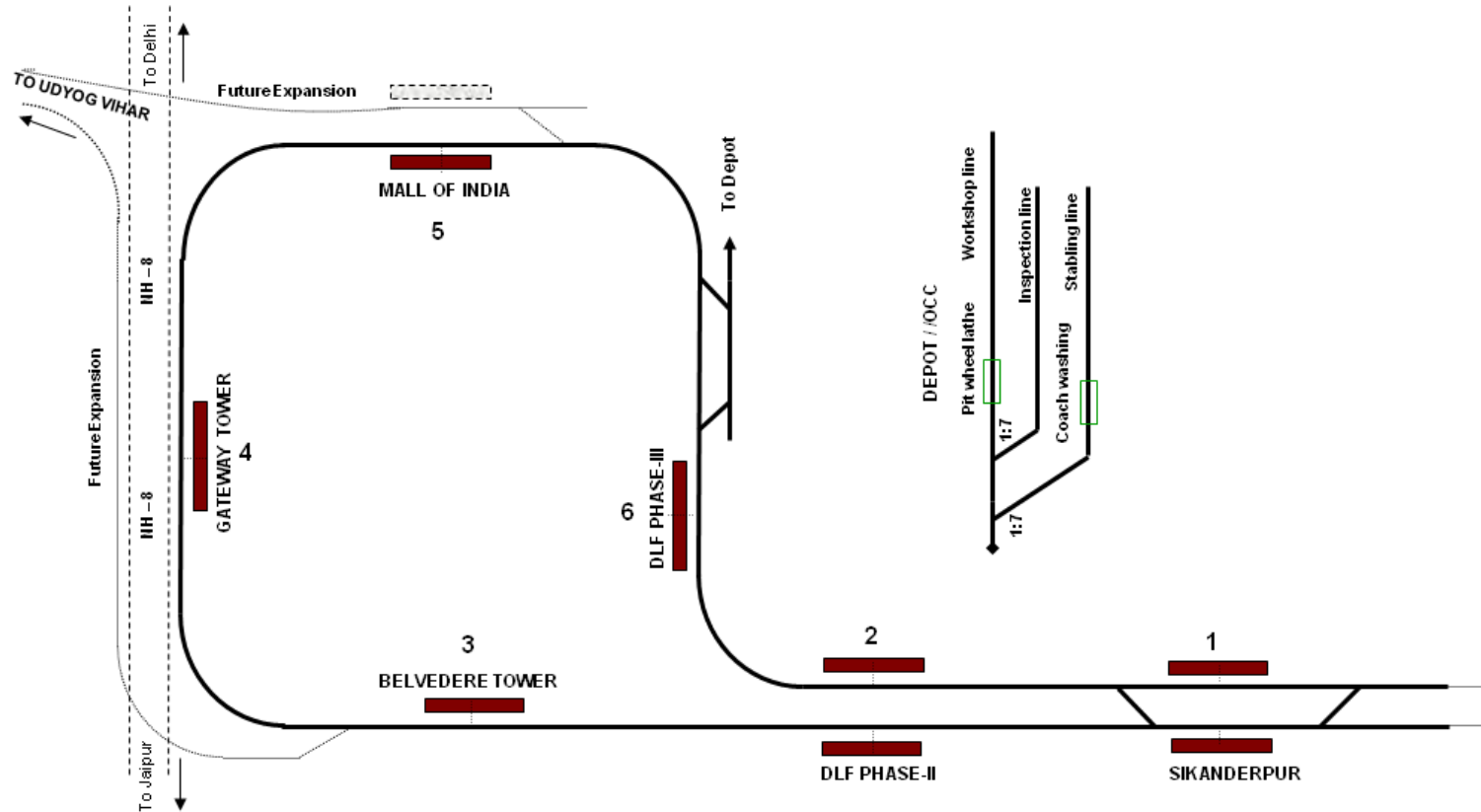
Rapid MetroRail Gurgaon

Project Status

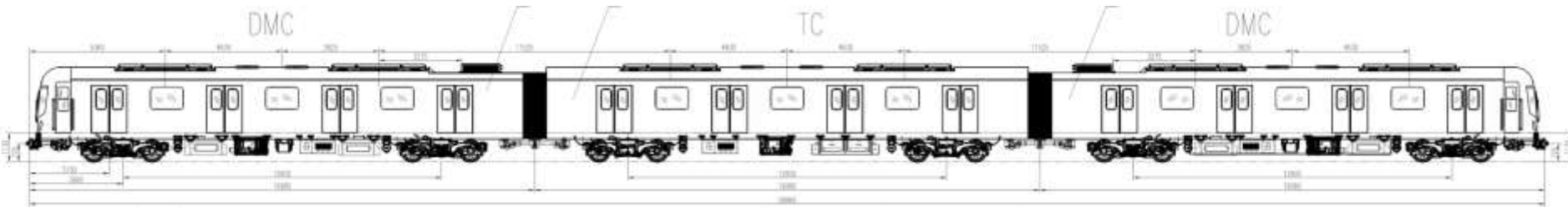
Route Alignment Map



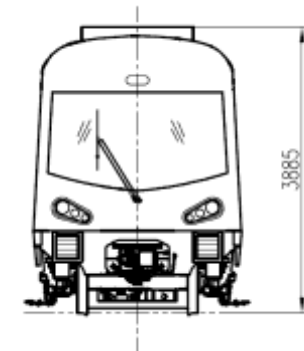
Track Layout



Train Layout



1	Length of Car (mm)	DMC	TC	UNITS
	a) Length of vehicle over body end walls/fairing	19314	19276	59312
	b) Length of carbody over couplers	19980	19980	59940
	c) Distance of vehicle bogie centres	12600	12600	N/A
2	Width of vehicle (mm):			
	a) Max. outside width of carbody	2800	2800	2800
	b) Outside width of roof (Rain gutter)	2554	2554	2554
	c) Outside width of under frame (sole bars)	2800	2800	2800
3	Height of Vehicle from TOR (mm)			
	a) Height of roof	3722.6	3722.6	3722.6
	b) Height A/C Unit	3885	3885	3885
	c) Height Brake Resistor	3871.5	—	3871.5
	d) Height of floor surface	1130	1130	1130
	e) Inside height (floor to ceiling) in centre	2100	2100	2100
	f) Coupler height (New wheels and AWO)	720	720	720
4	Speed			
	(a) Max. operating speed (kmph)	80	80	80
	(b) Design speed (kmph)	90	90	90
5	Structure Type	Aluminium alloy structure by welding	Aluminium alloy structure by welding	Aluminium alloy structure by welding
6	Load Requirement (Compressing force)	less than 1200kN	less than 1200kN	less than 1200kN
7	Service life	30 years	30 years	30 years



Salient Features

- All elevated: 1.2 km double track + 3.7 km single track
- Ballastless track
 - Standard Gauge
 - 60kg rail section
 - 336 rail fastening system
- Trains, Signalling and Traction Power Supply from one supplier
 - 3-car trains
 - DMC+TC+DMC
 - Aluminum body
 - Air-conditioned coaches
 - built by Siemens AG, Germany through ZELC China
 - 750V DC 3rd rail Traction
 - Automatic Train Protection and Automatic Train Operation
- Track structure, Signalling, Fare Collection identical to Delhi Metro project
- Check rail on curves sharper than 190m radius
- Sharpest horizontal curve 140m, max grade 3.2%
- Pre-cast box girders (except a few steel spans)
- DMRC is Owner's Engineer

Assistance Required

- Approval of SOD – MOR
- Approval of DBR – MOR
- Approval of Signaling System – MOR
- Notification of General Rules & Rules for Opening of Metro Railway – MoUD
- RMGL will submit an application for approval of Traction Power System & Issue of Provisional Speed Certificate for Oscillation Trials to RDSO

PROJECT STATUS

(As on 27 June 2012)

Target Date for Opening: March 2013

Viaduct

Girders Placed 193/ 273
Piles completed



June-2012

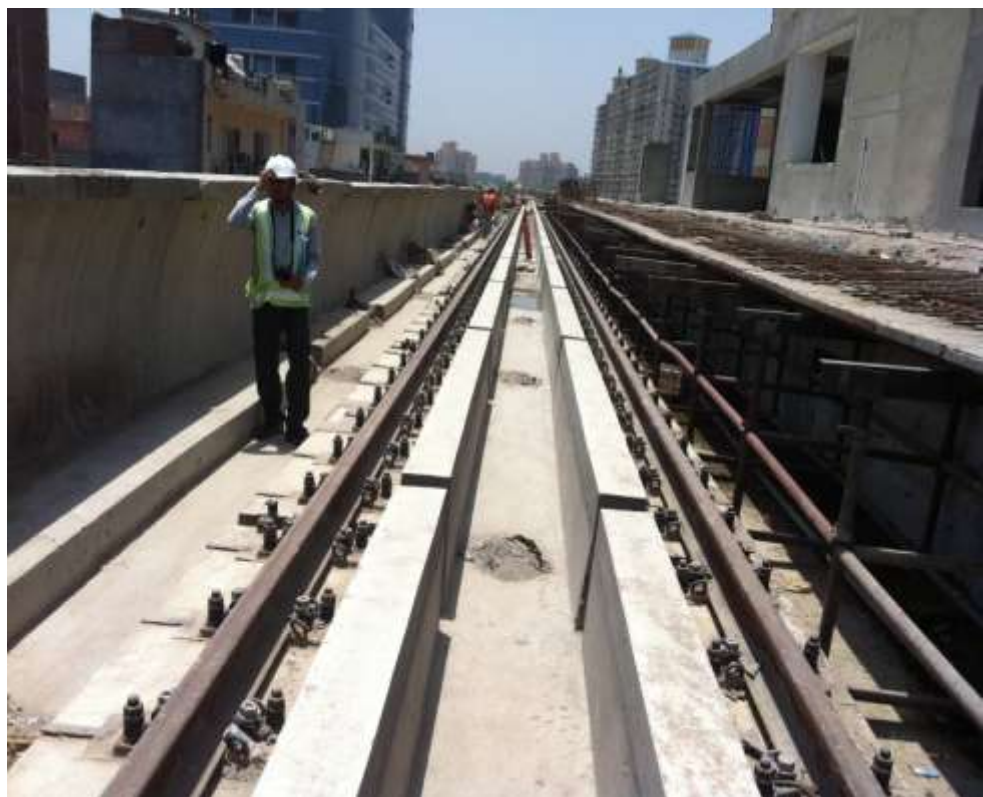
Stations

Activities	Sikenderpur	Phase-2	Belvedere Towers	Gateway	Mall of India	Phase-3
Foundation	90%	90%	90%	80%	90%	100%
Slab up-to Platform level	100%	100%	100%	Yet To Start	80%	100%
Entry-Exit Structure	Yet To Start	25%	Yet To Start	Yet To Start	Yet To Start	100%
Station Finishing including Roofing	Yet To Start	15%	Yet To Start	Yet To Start	Yet To Start	25%



Track Installation

Track Laid 1000m / 7200m
Two turnouts laid



Trains



- All 15 cars manufactured
- One train assembled and undergoing train level testing in China



THANK YOU