

**Projects of Rajasthan State  
for  
Sanction by  
Central Sanctioning & Monitoring  
Committee Under Housing for All**

**Dated: 29<sup>th</sup> May, 2017**

**Local Self Government Department  
Government of Rajasthan**

RUDSICO



CMJAY- 2015



## Progress of Projects Approved by CSMC, Affordable Housing in Partnership (AHP)

Dt.25.05.2017

S.N.	Total Project Sanctioned	Total Project Started	No of Dwelling Units	No of Dwelling Units taken up	Work Awarded to be Started Shortly	Bids in Process	Bids Invited
1.	28	16	14487	7447	07	03	02

## Progress of Projects Approved by CSMC, Beneficiary led construction (BLC)

S.N.	Total Project Sanctioned	No of Dwelling Units	Dwelling Units Started
1.	1	1030/180*	35

\*Subsidy Released for 180 Units





# Progress of projects, sanctioned by CSMC

S.No.	Project Details	Houses Sanctioned	Houses taken up	Up to plinth level	Up to ground floor roof laid	Up to first floor roof laid	Up to second floor roof laid	Up to third floor roof laid
1	Dholi Magri, Bedwas, Udaipur	848	608	608	152	152	152	152
2	Gram Anganwa Sunder Singh Bhandari Nagar, Jodhpur	544	544	448	128	104	80	80
3	Khasra No. 698 & 699 Ashoka Road Near Housing Board Balotra (Phase-I)	608	608	608	152	152	152	152
4	Khasra No. 698 & 699 Ashoka Road Near Housing Board Balotra (Phase-II)	592	398	288	72	72	72	72





# Progress of projects, sanctioned by CSMC

S.No.	Project Details	Houses Sanctioned	Houses taken up	Up to plinth level	Up to ground floor roof laid	Up to first floor roof laid	Up to second floor roof laid	Up to third floor roof laid
5	Khasra No. 2012 behind Police Thana, BSNL, Falna	480	328	336	16	0	0	0
6	Affordable Housing Project in Bhadhana Scheme, Kota	252	252	72	0	0	0	0
7	Mohan LalSukhadia Scheme, Kota	368	236	236	48	24	16	0
8	Ranpur Scheme, Kota	320	300	200	0	0	0	0
9	Project in Plot No. 4 & 12 Large Industrial Area, Kota.	640	640	640	120	80	48	0





# Progress of projects, sanctioned by CSMC

S.No.	Project Details	Houses Sanctioned	Houses taken up	Up to plinth level	Up to ground floor roof laid	Up to first floor roof laid	Up to second floor roof laid	Up to third floor roof laid
10	Affordable Housing Project, Chittorgarh	304	304	304	44			
11	Affordable Housing Project, Kishangarh	714	714	32				
12	Affordable Housing Project, Bhilwara	604	604	224				
13	Affordable Housing Project, MLS, Kota	532	468	468				
14	Affordable Housing Project, Prem Nagar	368	368	320				
15	Affordable Housing Project, Udaipur	640	640					
16	Affordable Housing Project, Jodhpur	400	400					





## Progress of AHP projects sanctioned by CSMC



Photograph of Falana (Pali)



Photograph of Anganwa Jodhpur





# Progress of AHP projects at Kota sanctioned by CSMC



Photograph Project of Kota







# Progress of AHP projects at Bedwas, Udaipur sanctioned by CSMC



Photograph Project of Udaipur

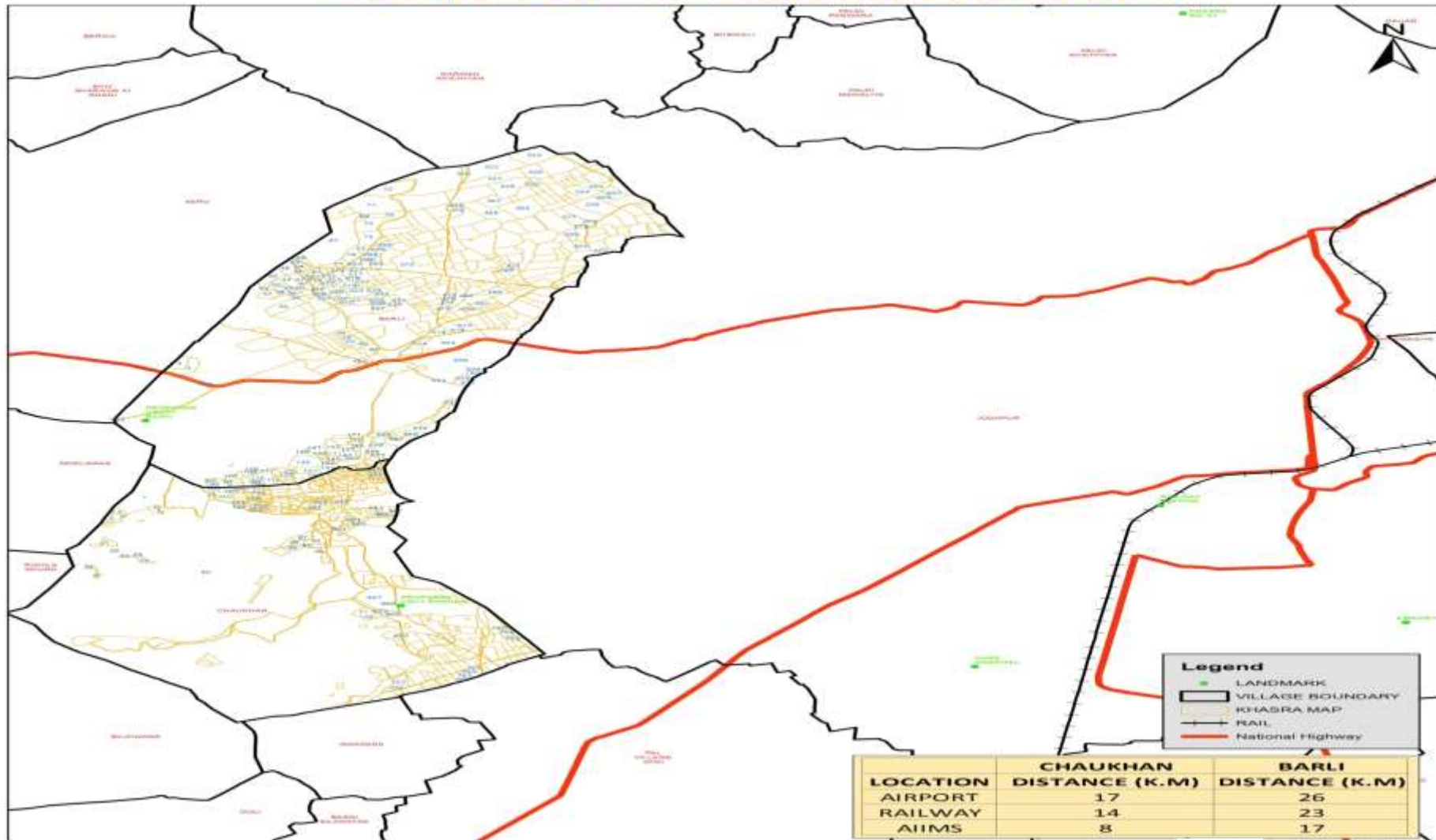






# Project - 1 : Affordable Housing Project at Vill -Chokha, Jodhpur

LOCATION MAP OF BARLI AND CHAUKHAN



SRI SRINAGAR, JODHPUR



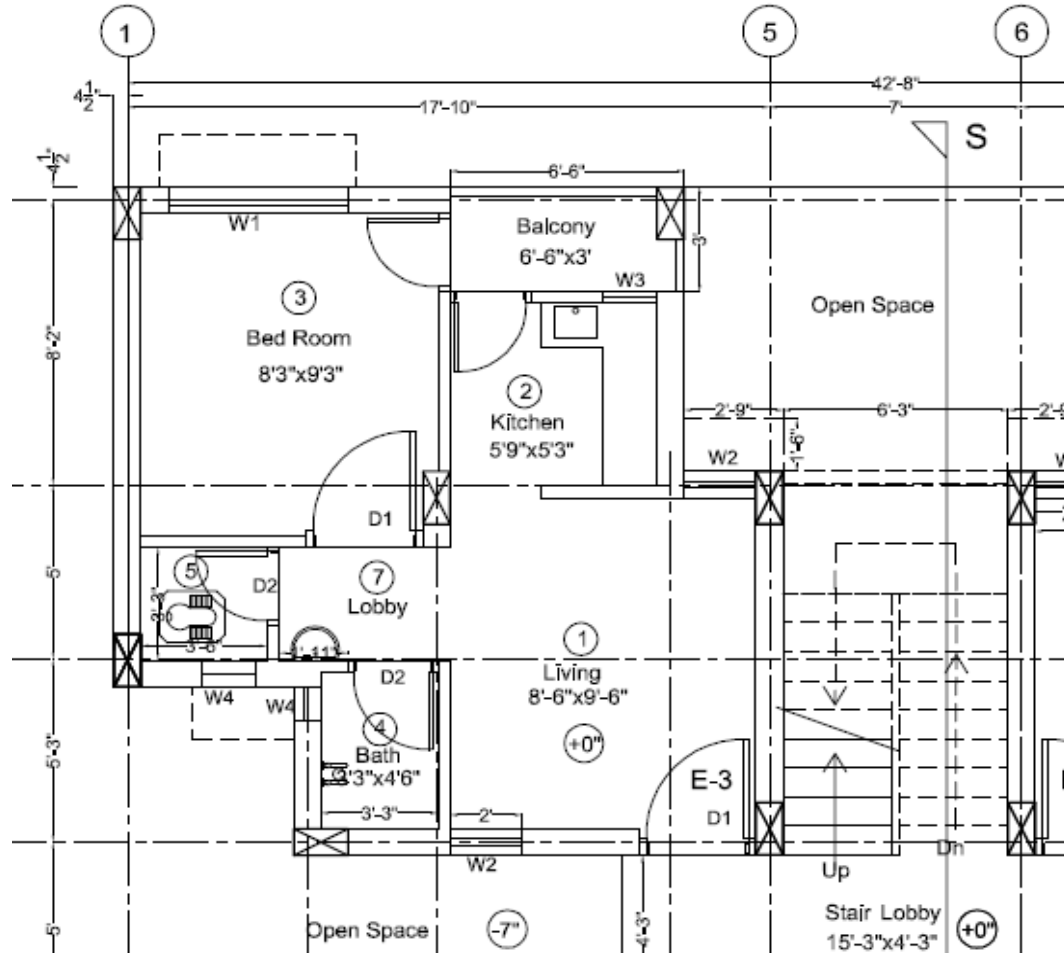


# Project – 1 : Affordable Housing Project at Vill –Chokha, Jodhpur

- Location – Village Chokha, Khasra no. 827/650, Jodhpur
- Total Land Area – 3.06 Hac. (Govt. Land)
- Topography – Plain
- Land Area for EWS/LIG component - 2.29 Hac (75%)
- No of Units – EWS – 464 units (59.2 % > 35% as per HFA)  
LIG – 320 units  
Total – 784 units
- Unit Built up area of EWS – 31.58 sqm. i.e 339.83.00 sq.ft.
- Sale price of EWS – 339.83.00 @Rs 1200/- per sqft (Rs 4.07 Lakhs)
- Subsidy by Implementing Agency– 339 .83 sqft. @Rs 219.45/- per sqft i.e Rs. 0.74 Lakhs
- **Per unit cost to be paid by beneficiary-Rs.2.57 Lakhs after AHP subsidy**
- Unit area of LIG – 529.60 Sqft. @Rs 1200/- per sqft (Rs 6.35 Lakhs)
- Status - Project approved by Local Authority & SLAC. Applications from beneficiaries are being invited.



# Project - 1 : Affordable Housing Project at Vill -Chokha , Jodhpur

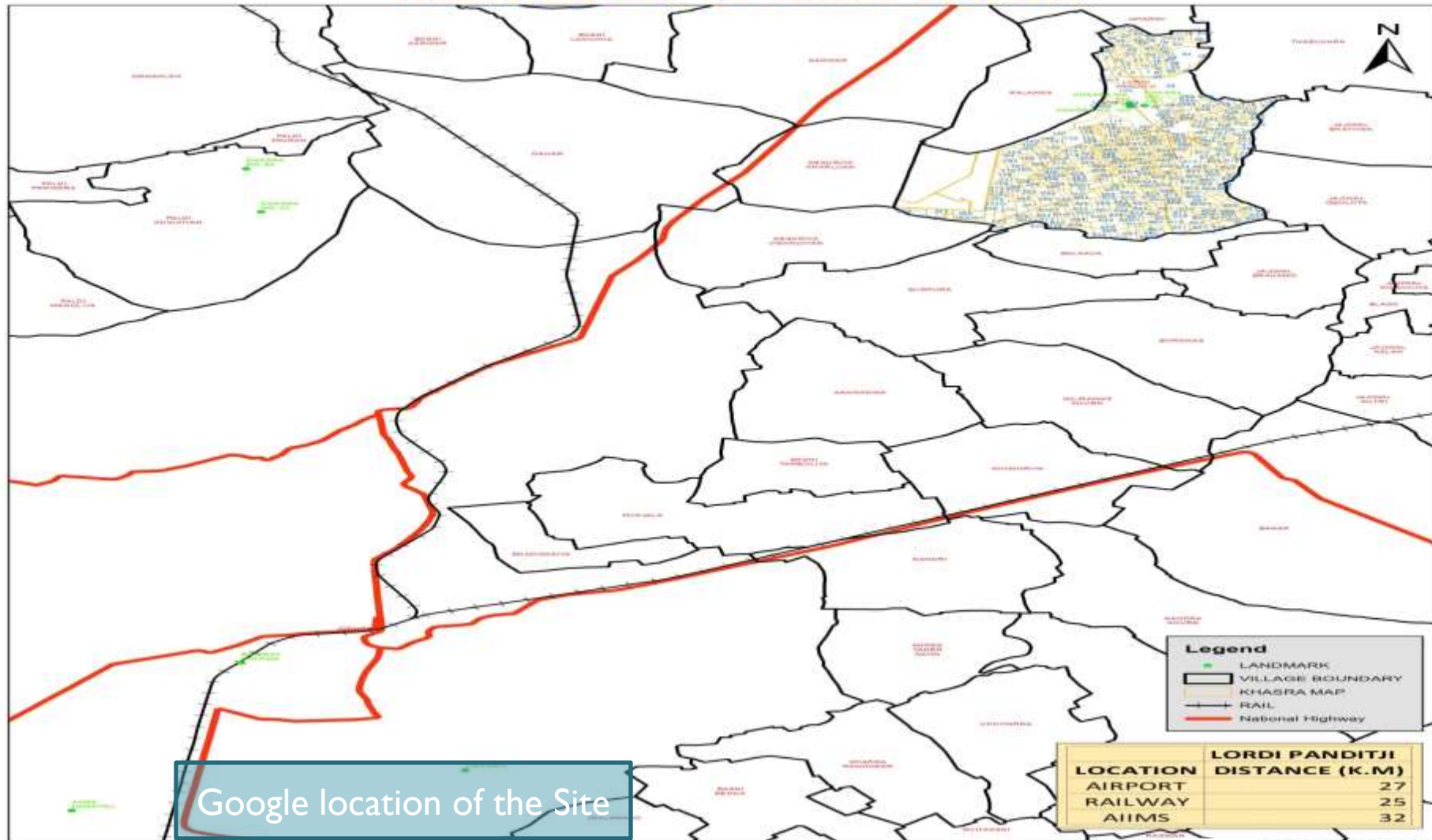


**Layout of EWS Unit**



# Project - 2 : Affordable Housing Project at Lordi Pandit, Package-8, Jodhpur.

LOCATION MAP OF LORDI PANDITJI



Google location of the Site

- Legend**
- LANDMARK
  - VILLAGE BOUNDARY
  - KHASRA MAP
  - RAIL
  - National Highway

	LORDI PANDITJI DISTANCE (K.M)
AIRPORT	27
RAILWAY	25
AIIMS	32





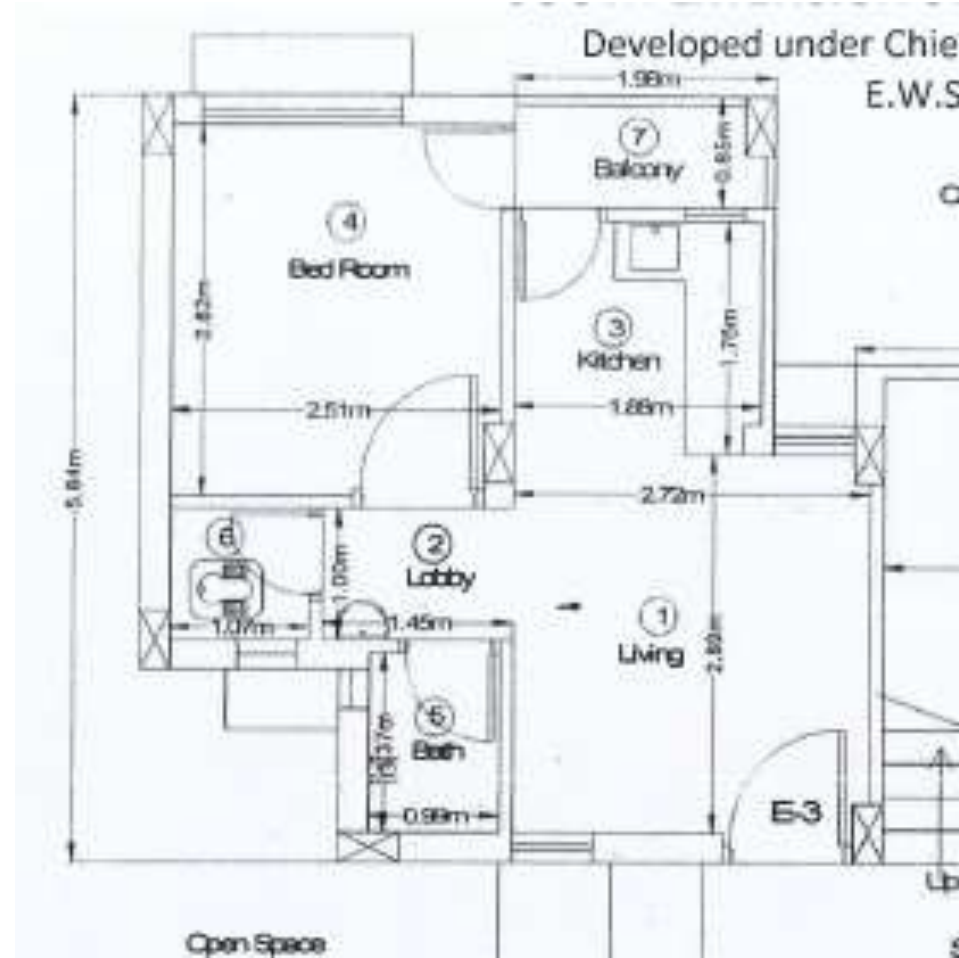


## Project - 2 : Affordable Housing Project at Lordi Pandit, Package-8, Jodhpur.

- Location Plot no. Village Lordi Pandit, Jodhpur, Package - 8
- Total Land Area - 5.11 Hac. (Govt. Land)
- Topography - Plain
- Land Area for EWS/LIG component - 3.83 Hac (75%)
- No of Units - EWS - 896 units (64.36% > 35% as per HFA)  
LIG - 496 units  
Total - 1392 units
- Unit Builtup area of EWS - 31.58 sqm. i.e 339.83 sq.ft.
- Sale price of EWS - 339.83 @Rs 1200/- per sqft (Rs 4.08 Lakhs)
- Subsidy by Implementing Agency- 339.83 sqft. @Rs 219.45/- per sqft i.e Rs. 0.74 Lakhs
- **Per unit cost to be paid by beneficiary -Rs.2.58 Lakhs after AHP subsidy**
- Unit area of LIG - 529.60 Sqft. @Rs 1200/- per sqft (Rs 6.08 Lakhs)
- Status - Project approved by Local Authority and SLAC applications from beneficiaries are being invited.



# Project - 2 : Affordable Housing Project at Lordi Pandit, Package-8, Jodhpur.

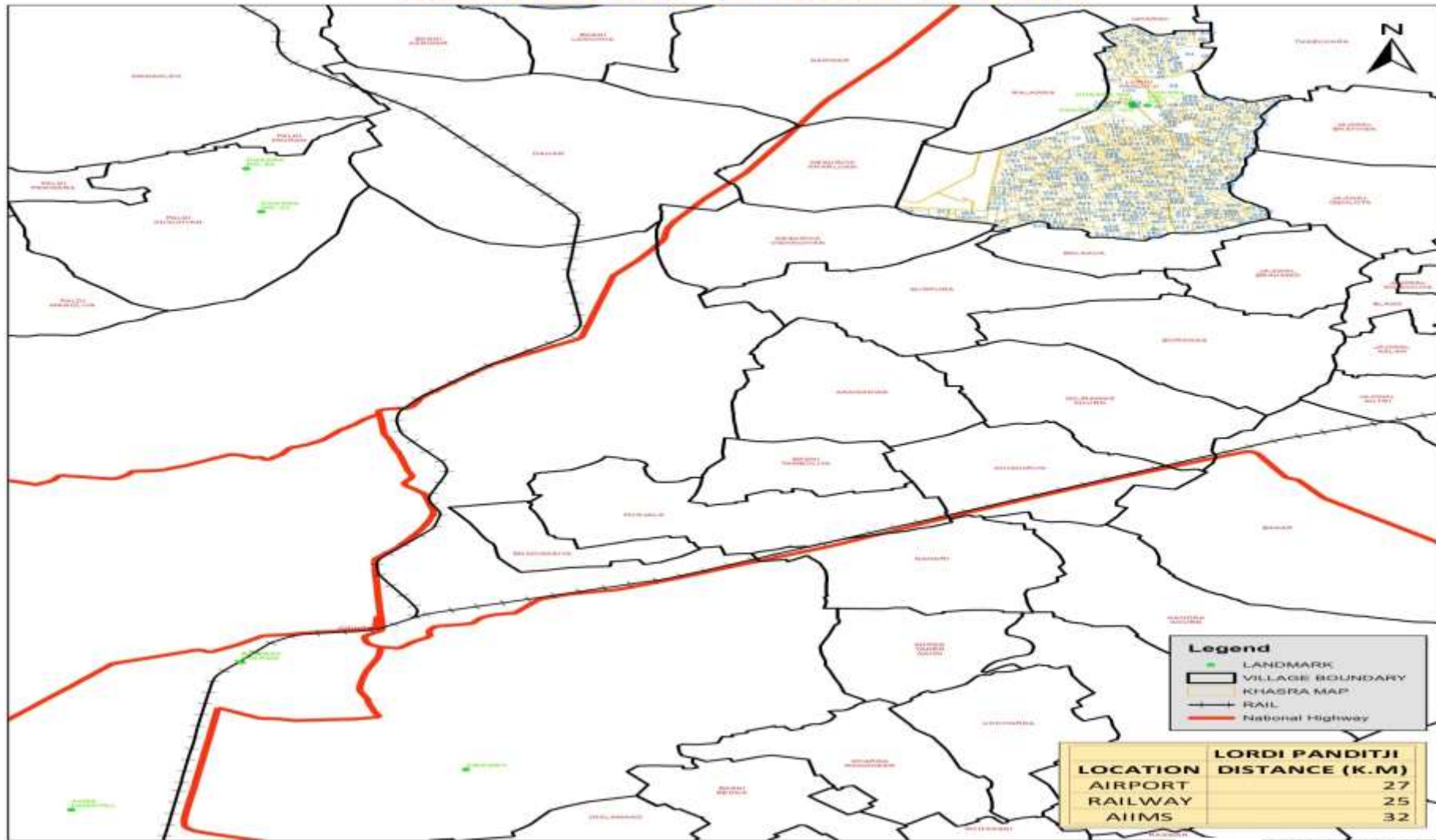


Layout of EWS Unit



# Project - 3 : Affordable Housing Project at Lordi Pandit, Package- 9, Jodhpur.

LOCATION MAP OF LORDI PANDITJI



SRI SRINAGAR, JODHPUR





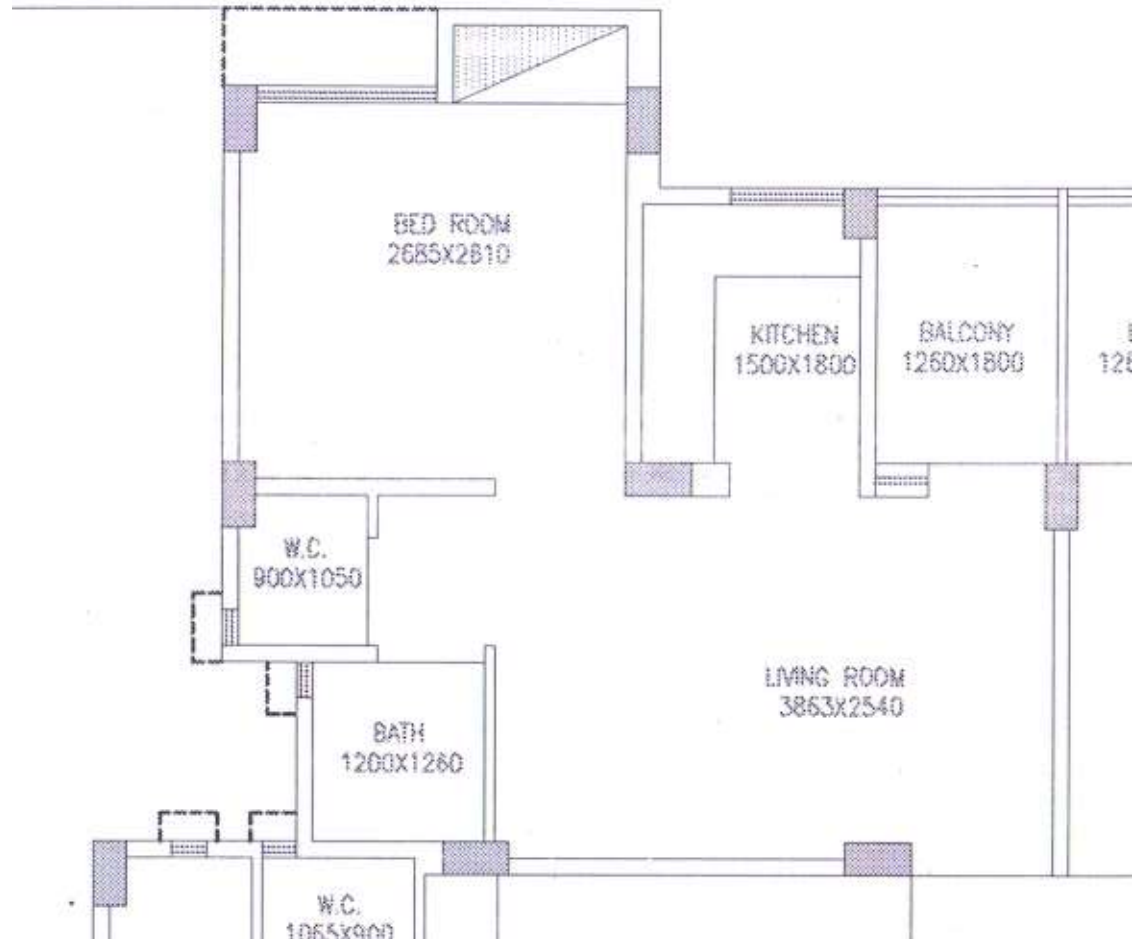
## Project – 3 : Affordable Housing Project at Lordi Pandit, Package-9, Jodhpur.

- Location Village- **Lordi Pandit**, Khasra No. 100,103,104
- Total Land Area 5.11 Hac. (Govt. Land)
- Topography – Plain
- Land Area for EWS/LIG component - 3.83 Hac (75%)
- No of Units – EWS – 1008 units (45.11% > 35% as per HFA)  
LIG – 560 units  
Total – 1568 units
- Unit Built up area of EWS – 31.58 sqm. i.e 339.83 qs.ft.
- Sale price of EWS – 339.83@Rs 1200/- per sqft (Rs 4.08 Lakhs)
- Subsidy by Implementing Agency- 339.83 sqft. @Rs 215.03/- per sqft i.e Rs. 0.73 Lakhs
- **Per unit cost to be paid by beneficiary- Rs. 2.58 Lakhs after AHP subsidy**
- Unit area of LIG – 529.60 Sqft. @Rs 1200/- per sqft (Rs 6.35 Lakhs)
- Status - Project approved by Local Authority and SLAC applications from beneficiaries are being invited.





# Project - 3 : Affordable Housing Project at Lordi Pandit, Package-9, Jodhpur.

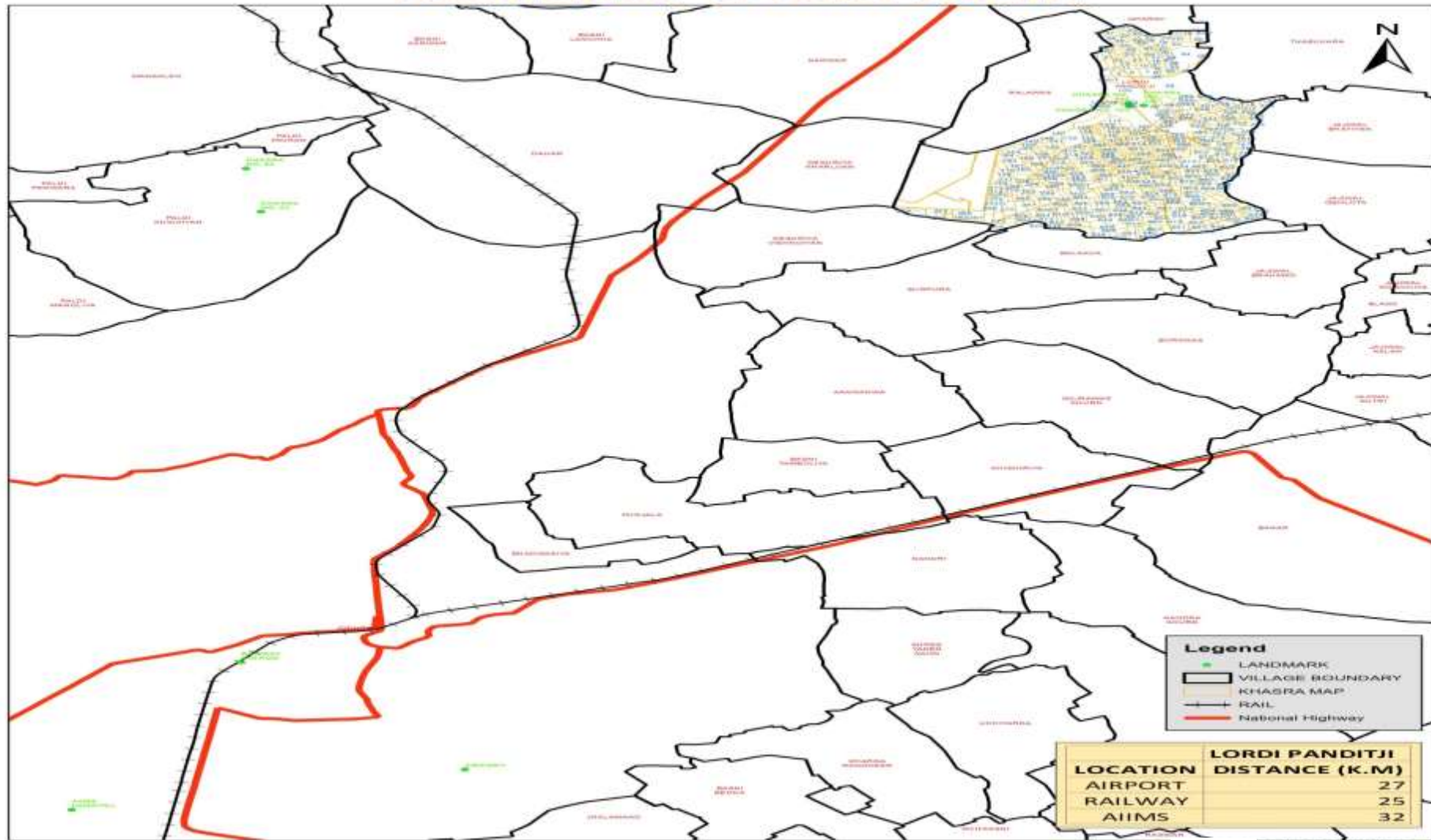


**Layout of EWS Unit**



# Project - 4 : Affordable Housing Project at Lordi Pandit, Package-10, Jodhpur.

LOCATION MAP OF LORDI PANDITJI



SRI SRINAGAR, JODHPUR



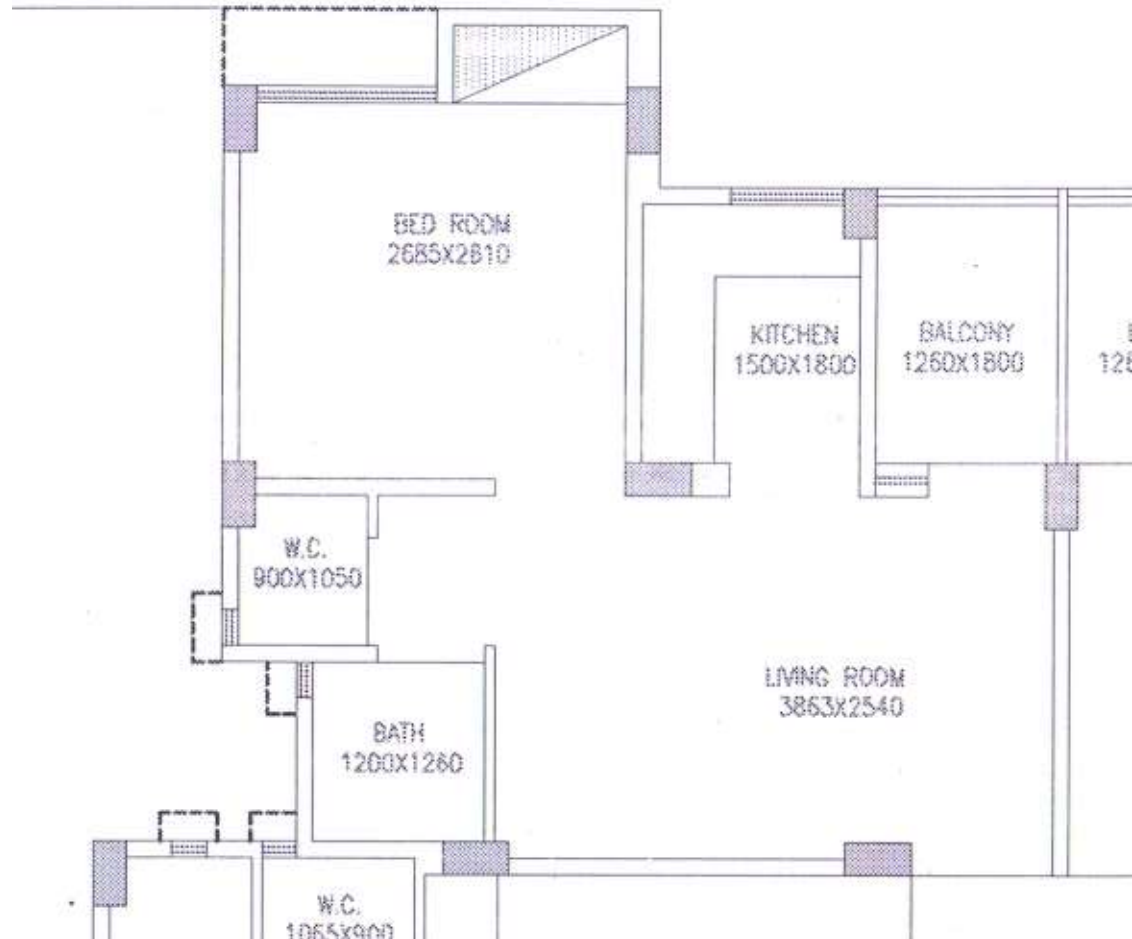


## Project - 4: Affordable Housing Project at Lordi Pandit, Package-10, Jodhpur.

- Location Village- **Lordi Pandit**, Khasra No. 100,103,104
- Total Land Area 5.75 Hac. (Govt. Land)
- Topography - Plain
- Land Area for EWS/LIG component - 4.31 Hac (75%)
- No of Units - EWS - 912 units (60% > 35% as per HFA)  
LIG - 608 units  
Total - 1520 units
- Unit Built up area of EWS - 31.58 sqm. i.e 339.83 qs.ft.
- Sale price of EWS - 339.83@Rs 1200/- per sqft (Rs 4.08 Lakhs)
- Subsidy by Implementing Agency- 339.83 sqft. @Rs 217.61/- per sqft i.e Rs. 0.74 Lakhs
- **Per unit cost to be paid by beneficiary- Rs. 2.58 Lakhs after AHP subsidy**
- Unit area of LIG - 529.60 Sqft. @Rs 1200/- per sqft (Rs 6.35 Lakhs)
- Status - Project approved by Local Authority and SLAC applications from beneficiaries are being invited.



# Project - 4 : Affordable Housing Project at Lordi Pandit, Package- 10, Jodhpur.



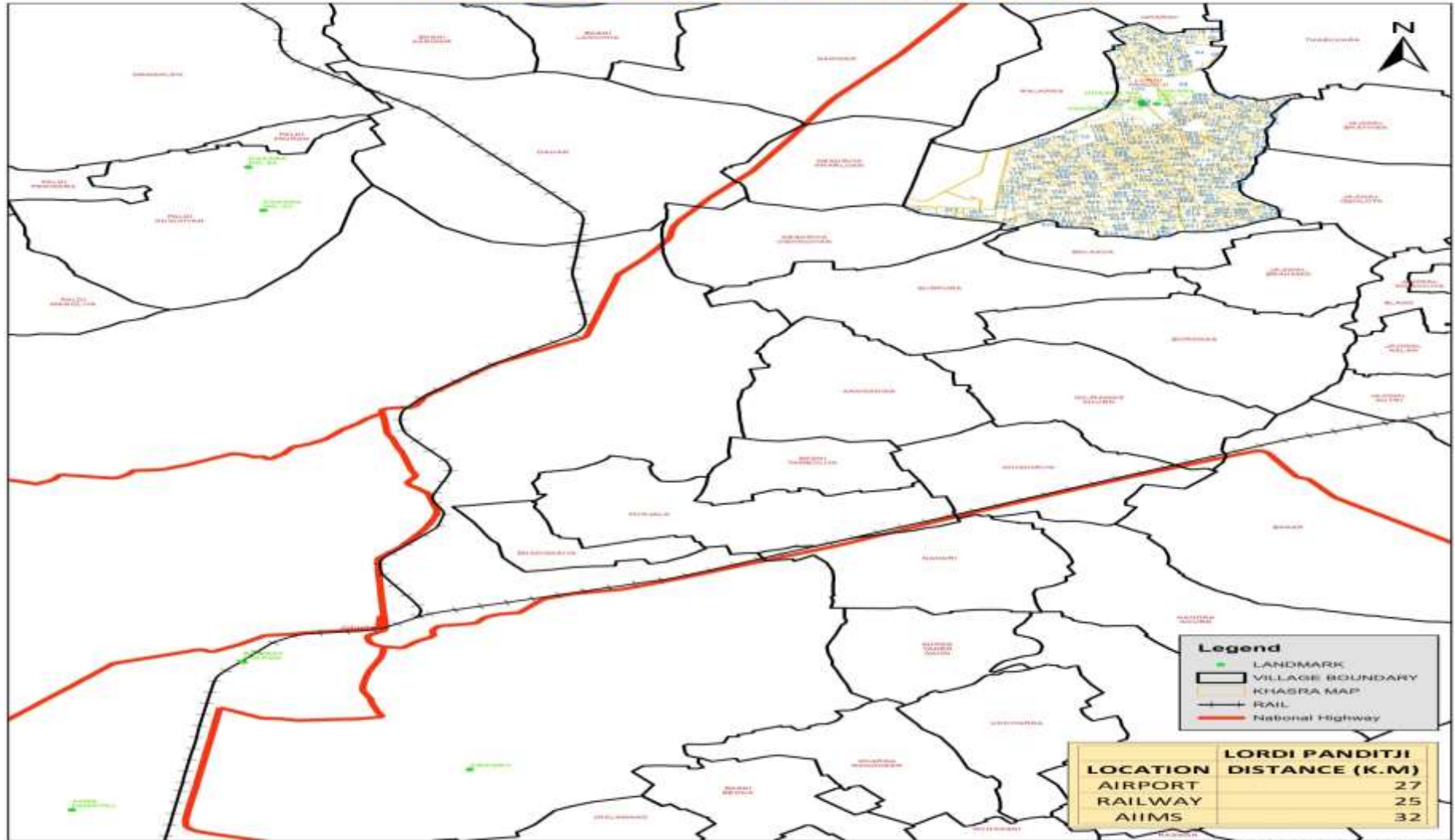
**Layout of EWS Unit**





# Project - 5 : Affordable Housing Project at Lordi Pandit, Package- 11, Jodhpur.

LOCATION MAP OF LORDI PANDITJI



SRSAC, GOR, JODHPUR



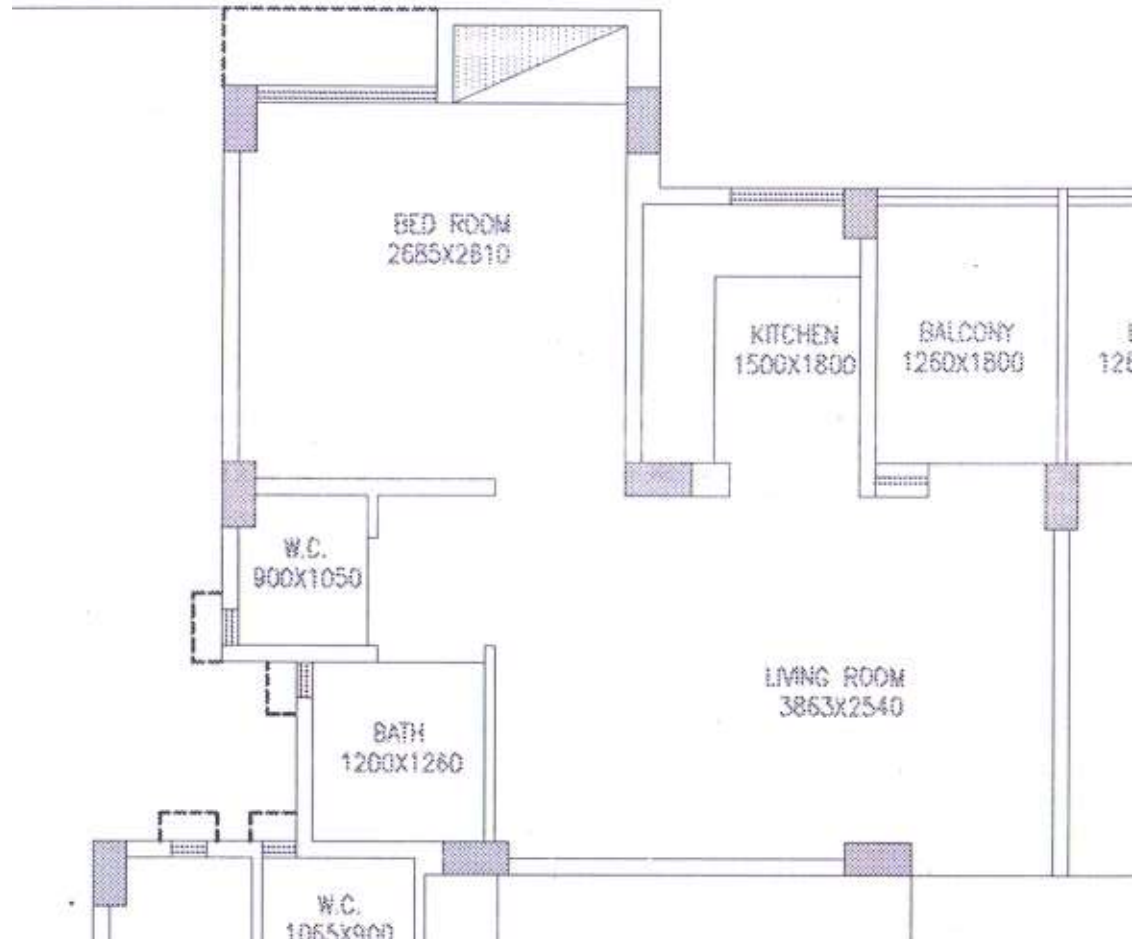


## Project - 5 : Affordable Housing Project at Lordi Pandit, Package - 11, Jodhpur.

- Location Village- **Lordi Pandit**, Khasra No. 100,103,104
- Total Land Area 6.34 Hac. (Govt. Land)
- Topography - Plain
- Land Area for EWS/LIG component - 4.75 Hac (75%)
- No of Units - EWS - 1008 units (60% > 35% as per HFA)  
LIG - 672 units  
Total - 1680 units
- Unit Built up area of EWS - 31.58 sqm. i.e 339.83 qs.ft.
- Sale price of EWS - 339.83@Rs 1200/- per sqft (Rs 4.08 Lakhs)
- Subsidy by Implementing Agency- 339.83 sqft. @Rs 207.48/- per sqft i.e Rs. 71.00 Lakhs
- **Per unit cost to be paid by beneficiary- Rs. 2.58 Lakhs after AHP subsidy**
- Unit area of LIG - 529.60 Sqft. @Rs 1200/- per sqft (Rs 6.35 Lakhs)
- Status - Project approved by Local Authority and SLAC applications from beneficiaries are being invited.



# Project - 5 : Affordable Housing Project at Lordi Pandit, Package- 11, Jodhpur.



**Layout of EWS Unit**





# Project – 6 : Affordable Housing Project at Bharatpur

© 2015 Google



Bharatpur, SPM Nagar, CMJAY 2015

27°13'46.88"N, 77°28'32.85"E

Google location of the Site





# Project – 6 : Affordable Housing Project at Bharatpur

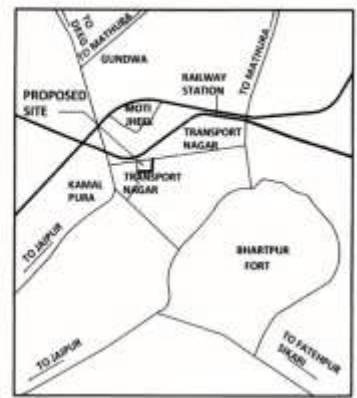
- Location Village- **SPM Nagar, Bharatpur.**
- Total Land Area 1.19 Hac. (Govt. Land)
- Topography – Plain
- Land Area for EWS/LIG component - 0.89 Hac (75%)
- No of Units – EWS – 320 units (100% > 35% as per HFA)  
LIG – 00 units  
Total – 320 units
- Unit Built up area of EWS – 31.39 sqm. i.e 337.85 sq.ft.
- Sale price of EWS – 337.85 @ Rs 1200/- per sqft (Rs 4.05 Lakhs)
- Subsidy by Implementing Agency– 337.85 sqft. @ Rs 415.15/- per sqft i.e Rs. 1.40 Lakhs
- **Per unit cost to be paid by beneficiary- Rs. 2.55 Lakhs after AHP subsidy**
- Unit area of LIG – 00.00 Sqft. @Rs 1200/- per sqft (Rs 00.00 Lakhs)
- Status - Project approved by Local Authority and SLAC applications from beneficiaries are being invited.



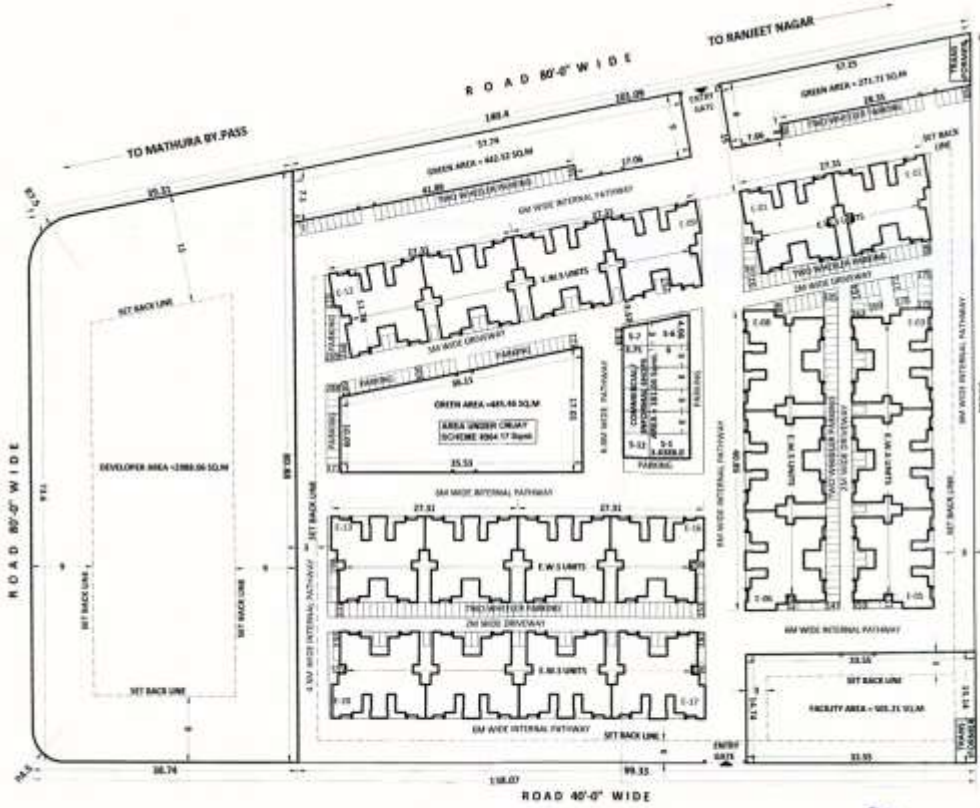
# Project - 6 : Affordable Housing Project at Bharatpur Approved Layout Plan

AREA STATEMENT				AREA STATEMENT ( CHIEF MINISTER'S JAN AWAS YOJANA )				DETAILS OF E.W.S					
S. Nos.	AREA STATEMENT	AREA (SQ.MT)	%	NOS.	PARTICULARS	AREA (SQ.MT)	%	CATEGORY	F.A.R AREA OF ALL FLATS (SQ.M)	SBUA OF ALL FLATS (SQ.M)	BUILT UP AREA OF ALL FLATS (SQ.M)		
1	TOTAL AREA	1292.23		3	RESIDENTIAL AREA	2572.00	28.69	E.W.S	8981.04	10048	8800		
2	LAND FOR DEVELOPER	2588.06	25.00	2	COMMERCIAL AREA	381.04	2.02						
3	CHIEF MINISTER'S JAN AWAS YOJANA - 2015 AT BHARATPUR	8964.17	75.00	3	FACILITY AREA	501.21	5.59						
AREA CALCULATION PER UNIT				4	GREEN AREA	1193.09	13.38	DETAILS OF SETBACK					
AREA FOR FLATS E.W.S. (PER UNIT)				5	ROAD AREA	2892	32.78	AREA	TYPE	SETBACK			
BUILT UP AREA	27.50	285		6	PARKING & OPEN SPACE	1638.23	18.05	RESIDENTIAL AREA	G-3	NORTH	SOUTH	EAST	WEST
BALCONY (50%)	0.75	8.0		7	E.W.S. UNITS (20X6X4)	320		DEVELOPER AREA		15	3	3	3
LOBBY AND STAIRCASE	3.15	33.6		8	TOTAL NO OF UNITS (6+3)	320				15	6	9	9
TOTAL SUPER BUILT UP AREA	31.40	337.6		9	TOTAL NO OF PARKING (30X10)	320							
				10	TOTAL F.A.R. AREA (APPROX)	8981.04							
				11	F.A.R. CONSUMED	1.00							
				12	PERMISSIBLE F.A.R	20100.38							
				13	REMAINING F.A.R ((1-11))	15188.54							
				14	GROUND COVERAGE	2753.04	30.73						
				15	PROPOSED DENSITY	144.5 UNITS PER ACRE							

Carpet Area 2705 sqm  
 1/100  
 1/110



KEY PLAN NOT TO SCALE



प्रभासी अविजारी  
 सचिव  
 नगर विकास विभाग  
 2-2-14 से 2-2-15 को सुन ली जा सकता है  
 सरकारी सुविधा के लिए

अधिसारी अधिवक्ता  
 नगर विकास विभाग  
 भरतपुर

20/10/17

Girish Kulkarni Sharma  
 B.Arch., M Plan (Urban)  
 Registration No. CA/81/13742

लावण्य URBAN PLANNING ARCHITECTURE INTERIOR DESIGN  
 B-3, Nakshatra Pede, C-35A  
 Laxmi Marg, C-Scheme, JAIPUR (Raj.)

U.I.T BHARATPUR	
CLIENT:	KATIRA CONSTRUCTIONS LTD.
CHIEF MINISTER'S JAN AWAS YOJANA - 2015, S.P.M. NAGAR AT BHARATPUR	
TITLE:	LAYOUT PLAN
INDEX:	AR/328
DATE:	17.01.17
DEALT BY:	A.K.
CHECKED:	G.S.
REMARKS:	
लावण्य URBAN PLANNING ARCHITECTURE INTERIOR DESIGN	NORTH
B-3, NAKSHATRA PEDE, C-35A, LAXMI MARG, C-Scheme, JAIPUR (Raj.)	PAPER SIZE: A2
TEL: 9141 2379722	SCALE: 1:500
E-MAIL ADDRESS: lavanya.architects@gmail.com	DRG. NO. 01
WEBSITE: www.lavanyas.com	

सहायक नगर निवासी  
 भरतपुर क्षेत्र, भरतपुर

नगर विकास विभाग  
 भरतपुर

नगर विकास विभाग  
 भरतपुर



# Project – 7 : Affordable Housing Project at Bhiwadi

- Location Village- **Batana, Nimrana, Bhiwadi**
- Total Land Area 4.39 Hac. (Govt. Land)
- Topography – Plain
- Land Area for EWS/LIG component - 3.29 Hac (75%)
- No of Units – EWS – 656 units (59% > 35% as per HFA)  
LIG – 448 units  
Total – 1104 units
- Unit Built up area of EWS – 33.21 sqm. i.e 357.44 qs.ft.
- Sale price of EWS – 357.44@Rs 1200/- per sqft (Rs 4.28 Lakhs)
- Subsidy by Implementing Agency– 357.44 sqft. @Rs 278.79/- per sqft i.e Rs. 1.00 Lakhs
- **Per unit cost to be paid by beneficiary- Rs. 2.78 Lakhs after AHP subsidy**
- Unit area of LIG – 511.10 Sqft. @Rs 1200/- per sqft (Rs 6.13 Lakhs)
- Status - Project approved by Local Authority and SLAC applications from beneficiaries are being invited.

# Project – 8 : Affordable Housing Project at Sirohi

- Location Village- **Revenue Village, Sirohi**
- Total Land Area 1.89 Hac. (Govt. Land)
- Topography – Plain
- Land Area for EWS/LIG component - 1.41 Hac (75%)
- No of Units – EWS – 400 units (80.64% > 35% as per HFA)  
LIG – 96 units  
Total – 496 units
- Unit Built up area of EWS – 30.28 sqm. i.e 325.90 qs.ft.
- Sale price of EWS – 325.90 @ Rs 1200/- per sqft (Rs 3.90 Lakhs)
- Subsidy by Implementing Agency– 325.90 sqft. @ Rs 136.02/- per sqft i.e Rs. 242.11 Lakhs
- **Per unit cost to be paid by beneficiary- Rs. 2.41 Lakhs after AHP subsidy**
- Unit area of LIG – 500.77 Sqft. @Rs 1200/- per sqft (Rs 6.00 Lakhs)
- Status - Project approved by Local Authority and SLAC applications from beneficiaries are being invited.



# Project – 9 : Affordable Housing Project at Hindon City

- Location Village- **Hindon City**
- Total Land Area 2.83 Hac. (Govt. Land)
- Topography – Plain
- Land Area for EWS/LIG component - 2 Hac (75%)
- No of Units – EWS – 544 units (66.66% > 35% as per HFA)  
LIG – 272 units  
Total – 816 units
- Unit Built up area of EWS – 31.64 sqm. i.e 340.45 qs.ft.
- Sale price of EWS – 340.45 @ Rs 1200/- per sqft (Rs 4.8 Lakhs)
- Subsidy by Implementing Agency- 340.45 sqft. @ Rs 78.87/- per sqft i.e Rs. 254.37 Lakhs
- **Per unit cost to be paid by beneficiary- Rs. 3.30 Lakhs after AHP subsidy**
- Unit area of LIG – 504.85 Sqft. @Rs 1200/- per sqft (Rs 6.58 Lakhs)
- Status - Project approved by Local Authority and SLAC applications from beneficiaries are being invited.

Thank  
you!



RUDSICO



CMJAY- 2015